

284 ADDISON ROAD  
RIVERSIDE





ROOM DIMENSIONS

LIVING ROOM : 17' × 13'

DINING ROOM : 14' × 13'

KITCHEN : 18' × 09'

FAMILY ROOM : 17' × 07'

DEN : 12' × 10'

RECREATION ROOM : 25' × 21'

PRIMARY BEDROOM : 18' × 16'

SECOND BEDROOM : 12' × 11'

THIRD BEDROOM : 14' × 11'

FOURTH BEDROOM : 12' × 10'

4 BEDROOM

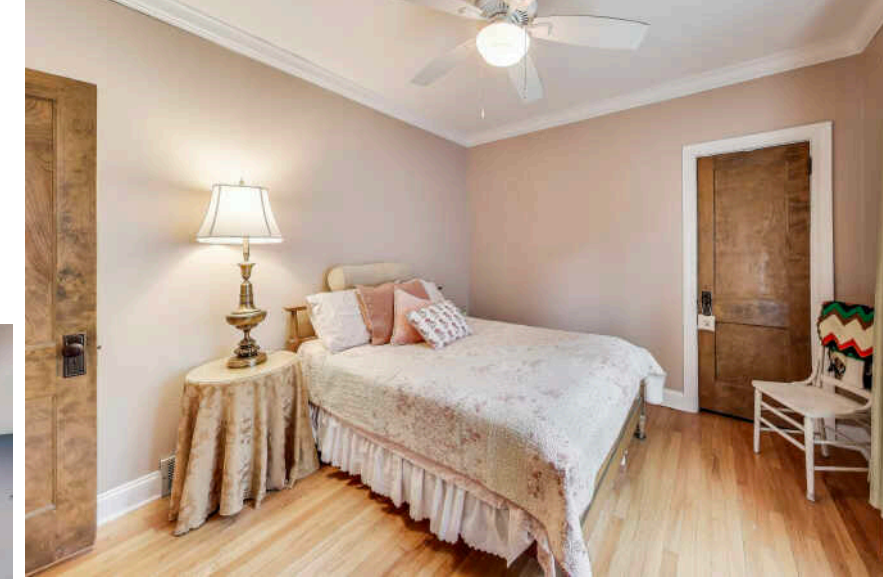
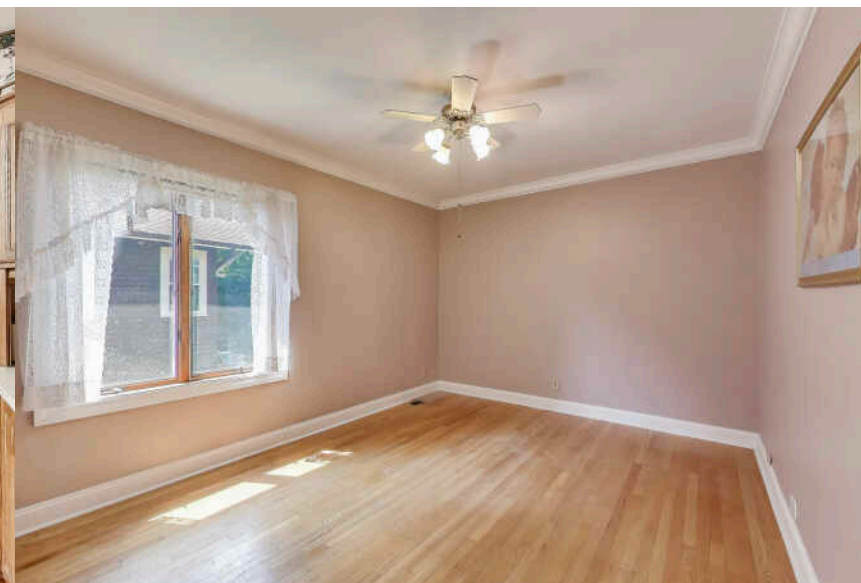
3 BATH

TAXES: \$5,870

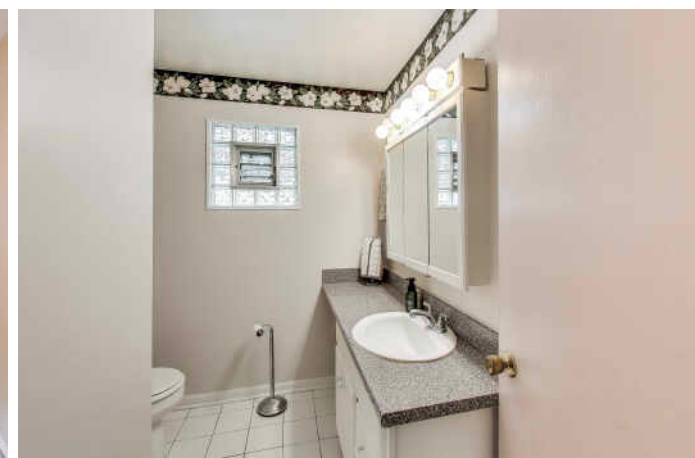
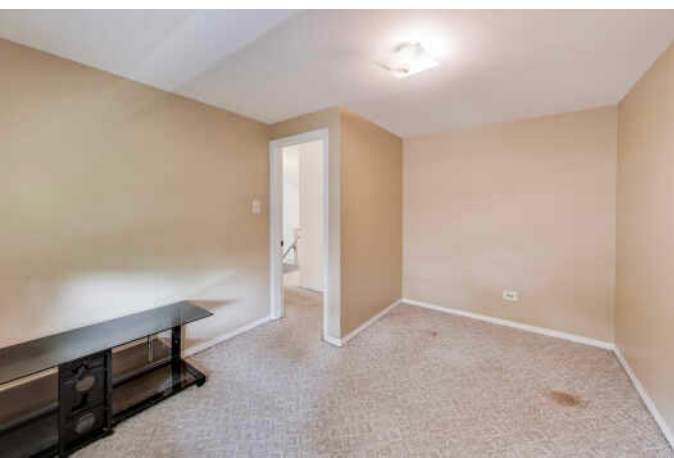
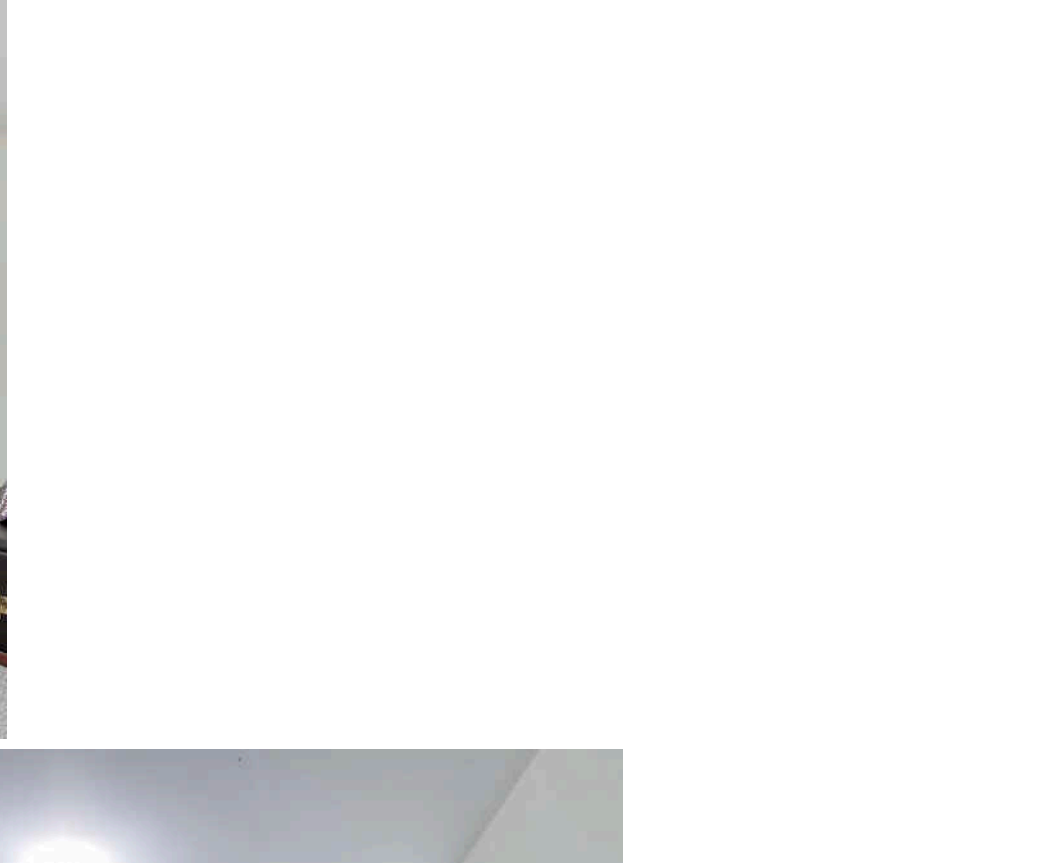
## THE ESSENCE OF RIVERSIDE LIVING - TRANQUIL, TIMELESS, AND CONNECTED

Welcome to 284 Addison Road, an exceptional blend of timeless architecture and thoughtful updates in the nationally celebrated Village of Riverside - a community designed by the legendary Frederick Law Olmsted. This expanded 4-bedroom, 3-bath bungalow offers over 2,500 square feet of versatile living space, set on a generous 9,072 sq ft lot. From the moment you enter, historic charm abounds: original stained glass windows, warm hardwood floors, and beautiful fireplace. The main level features a living room, dining room, 2 bedrooms and full bath. The eat-in kitchen provides a welcoming hub for everyday meals or entertaining guests, while the large back deck invites outdoor enjoyment year-round. The expanded second floor features two bedrooms and a full bath. A finished basement offers additional recreation space and storage. Located in an award-winning school district and just a short stroll from the Metra, this home truly captures the essence of Riverside living - tranquil, timeless, and connected.

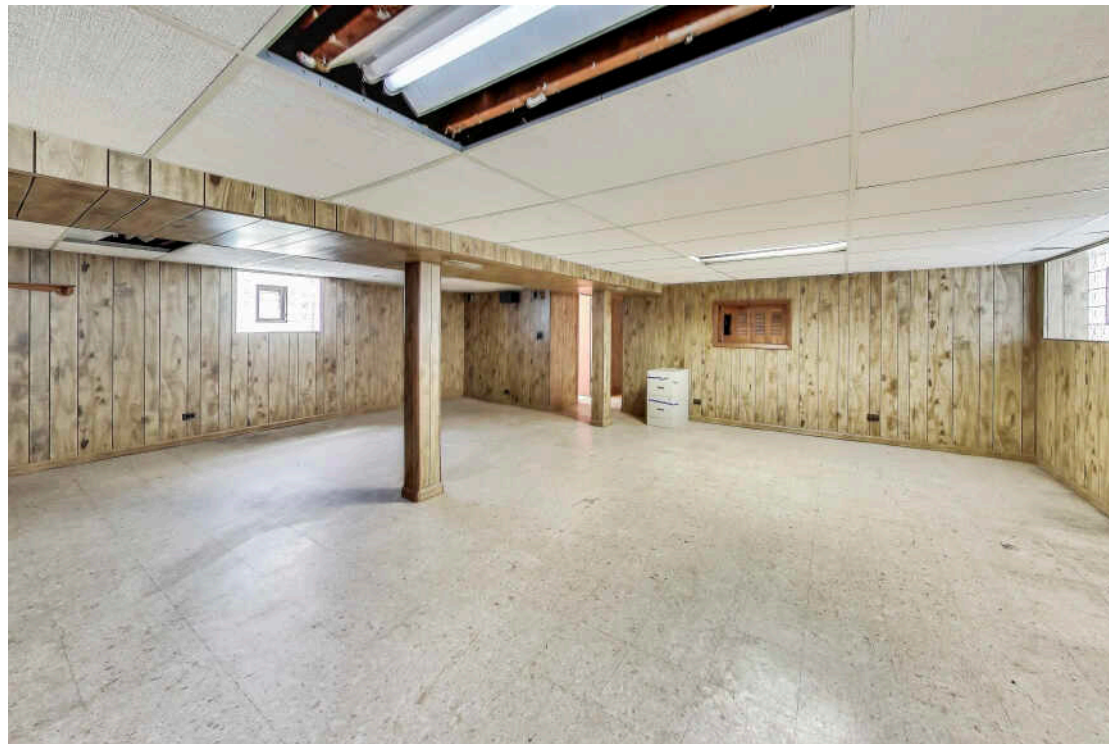




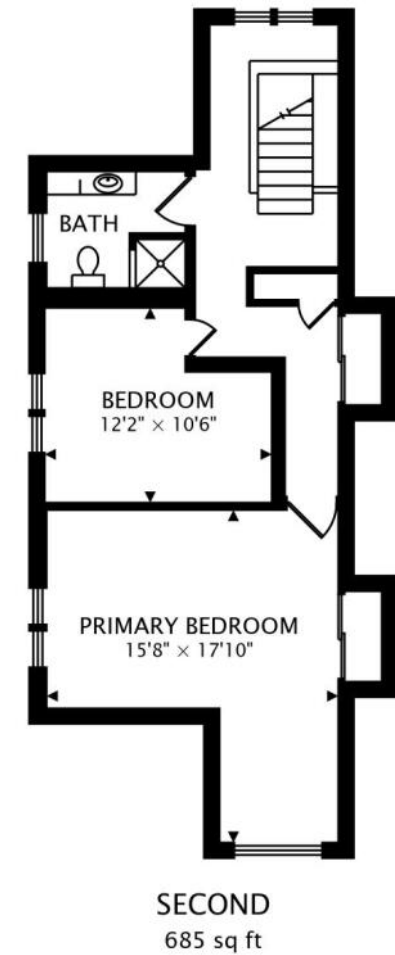
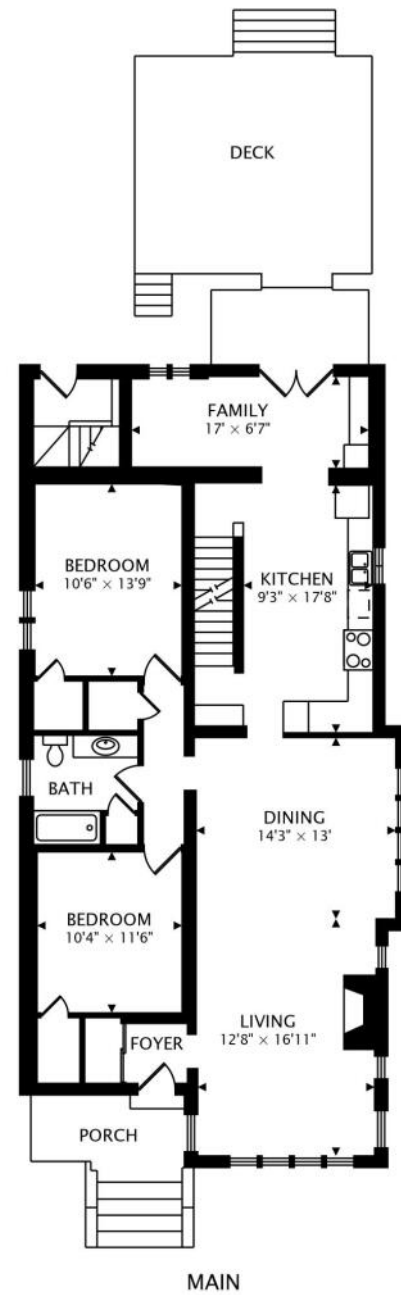




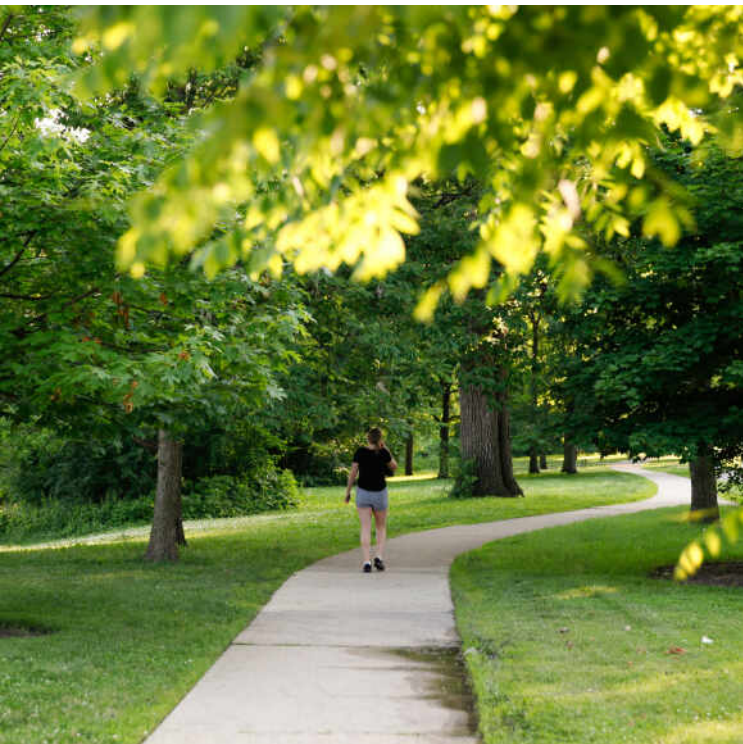
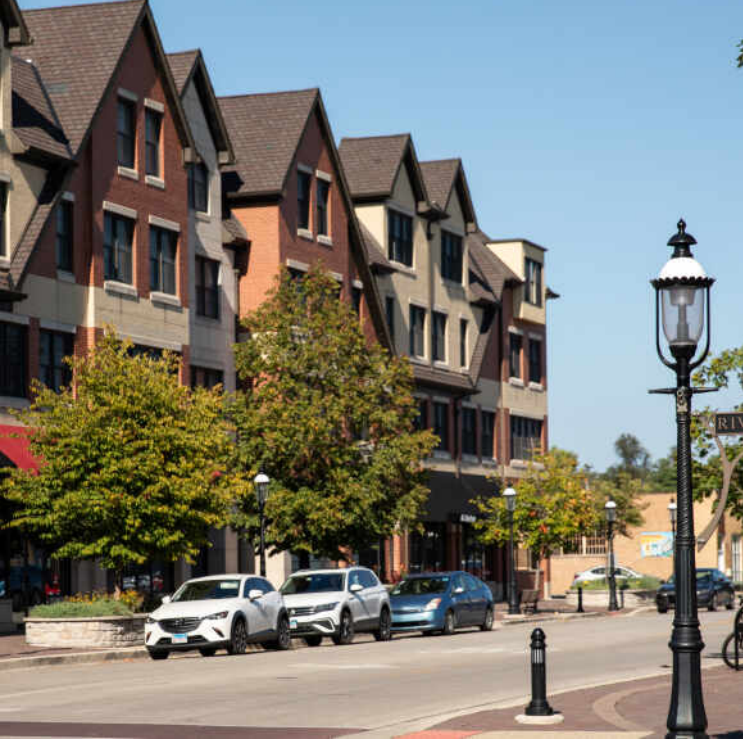












## RIVERSIDE IS CONSIDERED TO BE THE FIRST PLANNED COMMUNITY IN THE UNITED STATES.

Incorporated in 1875, the historically recognized village is noted for its expansive parkways, charming town center, and early 20th century architecture.

The Riverside Landscape Architecture District was designated a National Historic Landmark in 1970. To retain its original aesthetic charm, the village even maintains 379 antique-style gas street lanterns.

Residents take great pride in the community's history and architecture, which is on display through tours at the Riverside Historical Museum and the Riverside Water Tower. Homes include well-maintained 1920s bungalows, huge Victorians, and early 20th century mansions.

The village features several restaurants including some that have been recognized as among the best in the Chicago area. There are also several unique boutiques and stores selling antiques and Victorian house fixtures – a nod to the town's rich architectural history.

Riverside students attend District 96 schools including four elementary schools and one junior high school. High school students attend Riverside Brookfield High School, part of the Riverside-Brookfield Township School District 208.

With a train station along Metra's BNSF Railway, Riverside is a short commute to Chicago's Union Station.





NOTES





## JEFF BAKER

(708) 567-4901

JEFFBAKER@ATPROPERTIES.COM

BAKERSATBURLINGTON.COM



## SARA BAKER

7085675015

SARABAKER@ATPROPERTIES.COM

BAKERSATBURLINGTON.COM