

286 WESTERFIELD PLACE

GRAYSLAKE





ROOM DIMENSIONS

ENCLOSED PORCH : 32' x 7'

FOYER : 12' x 10'

LIVING ROOM : 23' x 11'

DINING ROOM : 11' x 8'

KITCHEN : 22' x 13'

FAMILY ROOM : 23' x 13'

PRIMARY BEDROOM : 17' x 13'

WALK IN CLOSET : 11' x 6'

2ND BEDROOM : 16' x 15'

3RD BEDROOM : 15' x 8'

4TH BEDROOM : 11' x 9'

RECREATION ROOM : 33' x 11'

LAUNDRY ROOM : 17' x 11'

WORKSHOP : 11' x 6'

UTILITY/STORAGE : 11' x 8'

THIS IS TRULY A SLICE OF AMERICANA!

Enjoy all the character and charm of a 1920s Craftsman style home along with the modern conveniences of an open floor plan with completely remodeled kitchen and baths.

The house is situated on an extra deep lot (just shy of half an acre) and is just a few blocks from the restaurants and shops of downtown Grayslake.

You are greeted by a warm and inviting enclosed front porch that can be enjoyed year-round.

The kitchen is gorgeous with updated cabinets, quartz counter tops, a center island, stainless steel appliances, recessed lighting and more.

There is a great addition off the back that provides a spacious family room with great ceiling height and a cozy fireplace.

Don't miss the kids play area tucked away off that room.

Upstairs is a wonderful primary bedroom suite with a spacious walk-in closet and its own remodeled full bath with a dual sink vanity, custom walk-in shower and quaint built-in cabinets and shelves.

Three additional bedrooms upstairs are supported by a completely remodeled hall bath.

There is a man cave in the basement along with additional storage space and small workshop area.

Take in the enormous, fully fenced, back yard from the paver brick patio. You could set up a soccer field in this yard!

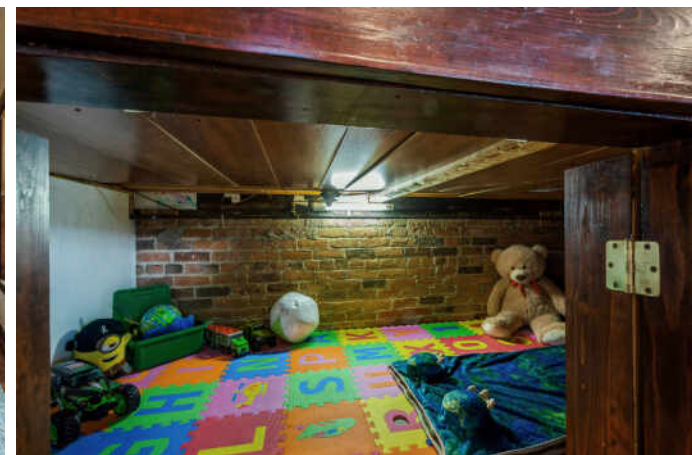
The side entrance from the two-car detached garage is ideal for backpacks, coats, boots, etc.



4 BEDROOM

2.1 BATH



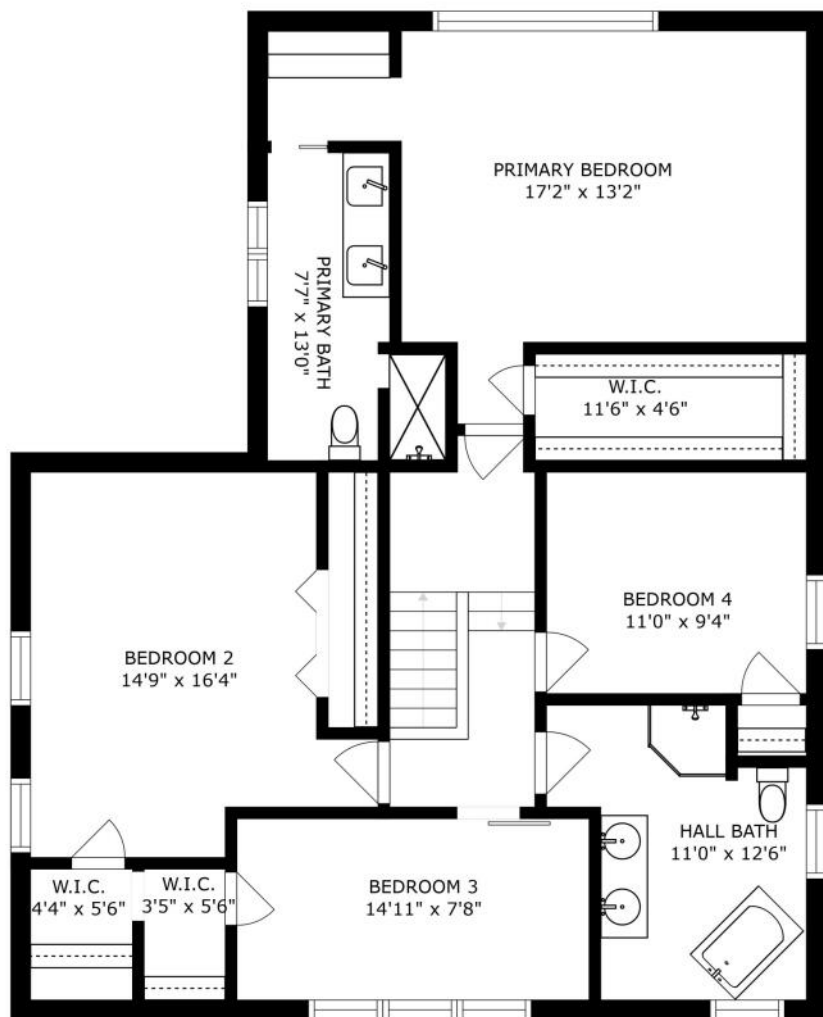




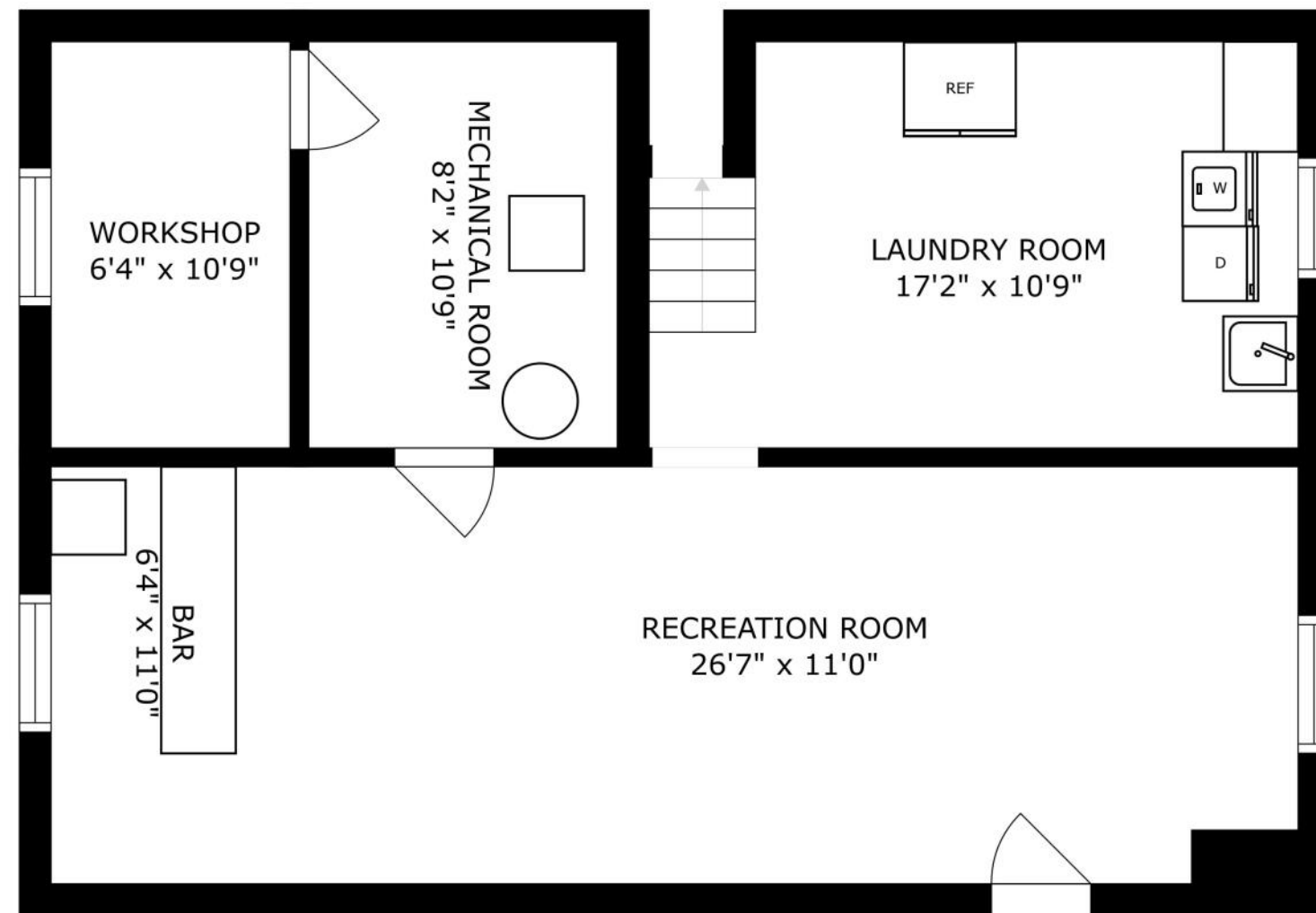




SIZES AND DIMENSIONS ARE APPROXIMATE, ACTUAL MAY VARY.



SIZES AND DIMENSIONS ARE APPROXIMATE, ACTUAL MAY VARY.



SIZES AND DIMENSIONS ARE APPROXIMATE, ACTUAL MAY VARY.



TERRY WILKOWSKI

REAL ESTATE BROKER

DIRECT: (847) 682-1549

TWILKOWSKI@ATPROPERTIES.COM



MARY GIBBS-MOODHE

REAL ESTATE BROKER

DIRECT: (847) 902-3357

MGIBBS@ATPROPERTIES.COM



@properties®

CHRISTIE'S
INTERNATIONAL REAL ESTATE

286WESTERFIELD.INFO