

28790 N SKY CREST DRIVE  
MUNDELEIN

28790 N SKY CREST DRIVE · MUNDELEIN



@properties | CHRISTIE'S  
INTERNATIONAL REAL ESTATE

LP LUXURY  
PORTFOLIO  
INTERNATIONAL



**GINA SHAD** BROKER

847.970.8513 mobile  
847.367.0500 office  
ginashad@atproperties.com  
ginashadrealstate.com

28790 N SKY CREST DRIVE • MUNDELEIN



@properties | CHRISTIE'S  
INTERNATIONAL REAL ESTATE

LP LUXURY  
PORTFOLIO  
INTERNATIONAL



# 28790 N SKY CREST DRIVE LOVE WHERE YOU LIVE

## ROOM DIMENSIONS

Living Room .....	21'x22'
Dining Room .....	15'x12'
Kitchen .....	15'x13'
Primary Bedroom .....	19'x17'
Second Bedroom .....	15'x12'
Third Bedroom .....	13'x13'
Fourth Bedroom .....	14'x14'
Fifth Bedroom .....	19'x16'

## FEATURES

Extensively updated and overlooking one of the most picturesque views at the award-winning Ivanhoe Golf Club, this 5-bedroom, 5.1-bath home offers an exceptional blend of modern upgrades, flexible living spaces, and breathtaking views. With 3,402 sq ft above grade plus an additional 2,398 sq ft in the finished walkout basement, this home delivers nearly 5,800 sq ft of beautifully finished living space. The interior has been completely refreshed - featuring refinished hardwood floors, fresh paint throughout, a redesigned kitchen and bath, and a remodeled home office. Every light fixture has been replaced for a bright, contemporary feel. The thoughtful layout includes a first-floor bedroom with a private bath, plus a main-level office- perfect for today's lifestyle needs. The bright walkout basement is like its own retreat- ideal for in-laws and guests! Offering a large recreation room, spacious bedroom, kitchenette, and a new full bathroom with a steam shower. Perfectly updated to provide comfort and efficiency! Boasting high-efficiency furnaces and A/C units (\$42,000, installed approximately 3 years ago), a new driveway, reset brickwork, a 220V electric connection in the garage, and so much more- including A NEW COMPOSITE SHAKE ROOF THAT WILL BE INSTALLED PRE-CLOSING! An amazing community with the option to join a social or golf membership at the award-winning private golf club offering 3 distinct 9-hole golf courses, and impeccable facilities & family-oriented amenities. Everything you need is here!



**GINA SHAD** BROKER

847.970.8513 mobile  
847.367.0500 office

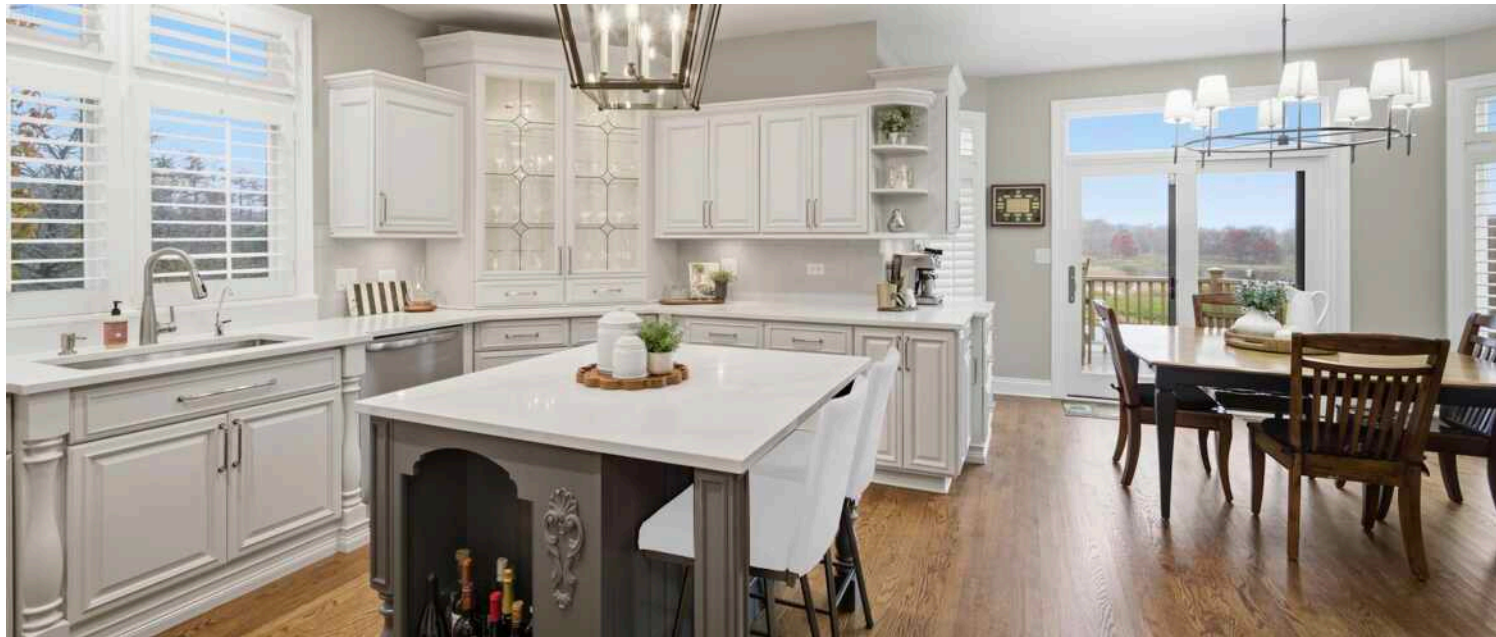
ginashad@atproperties.com  
ginashadrealstate.com





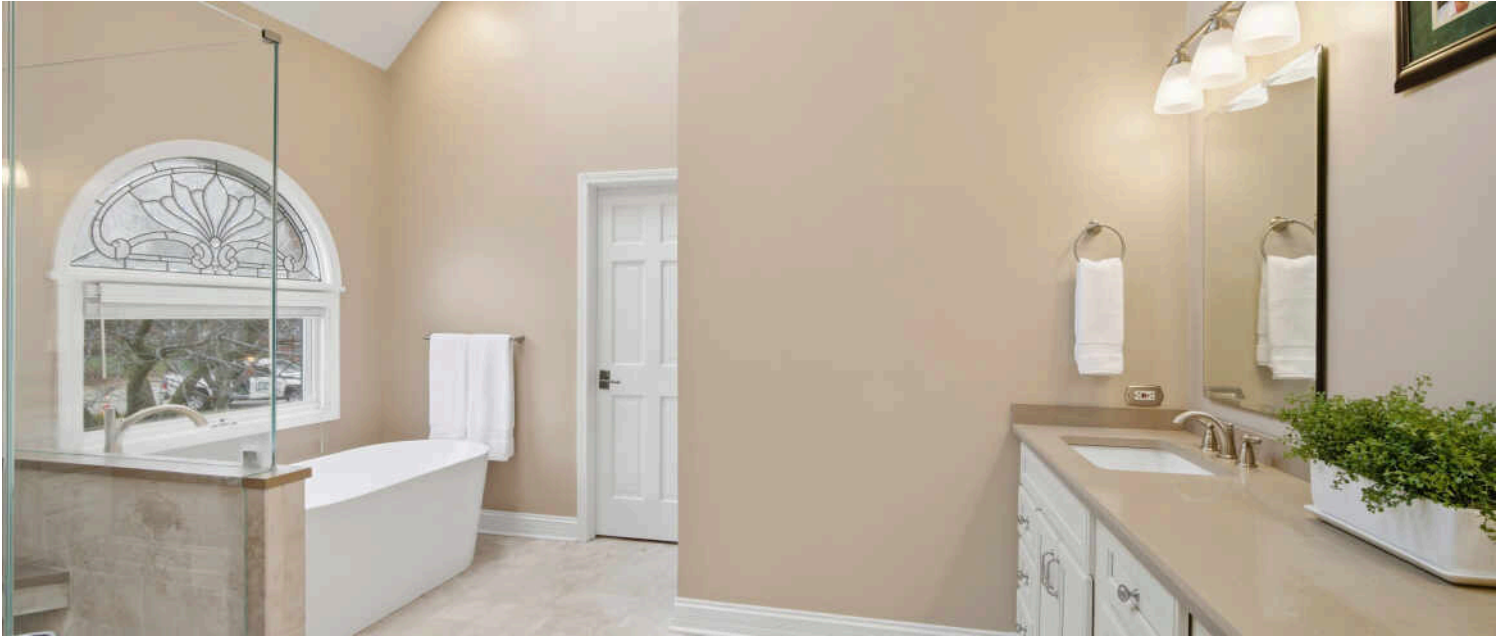




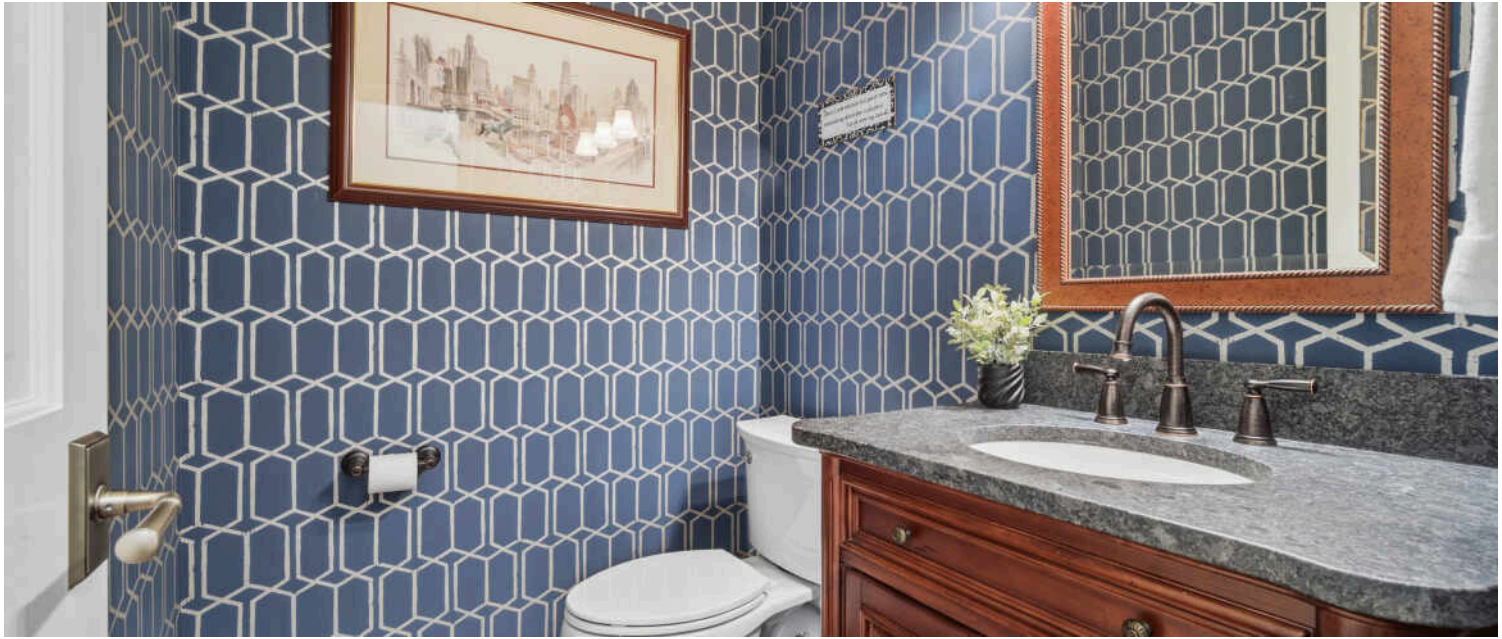


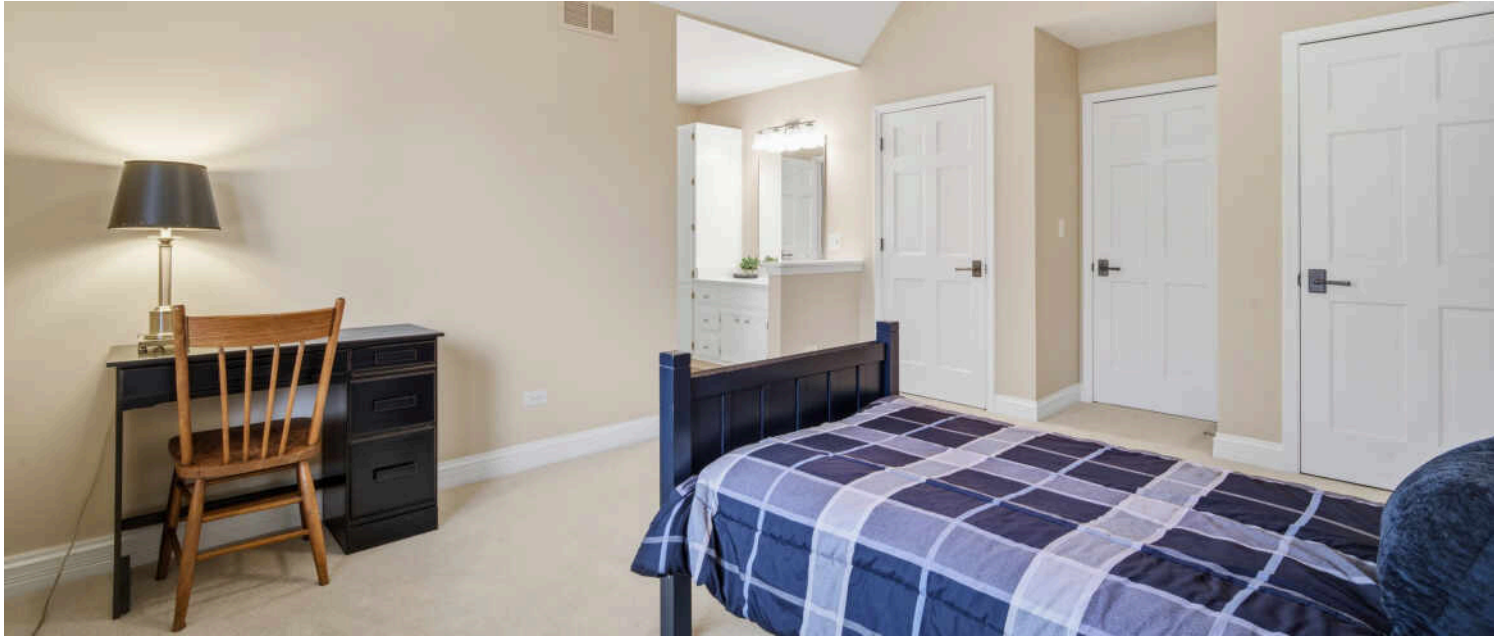


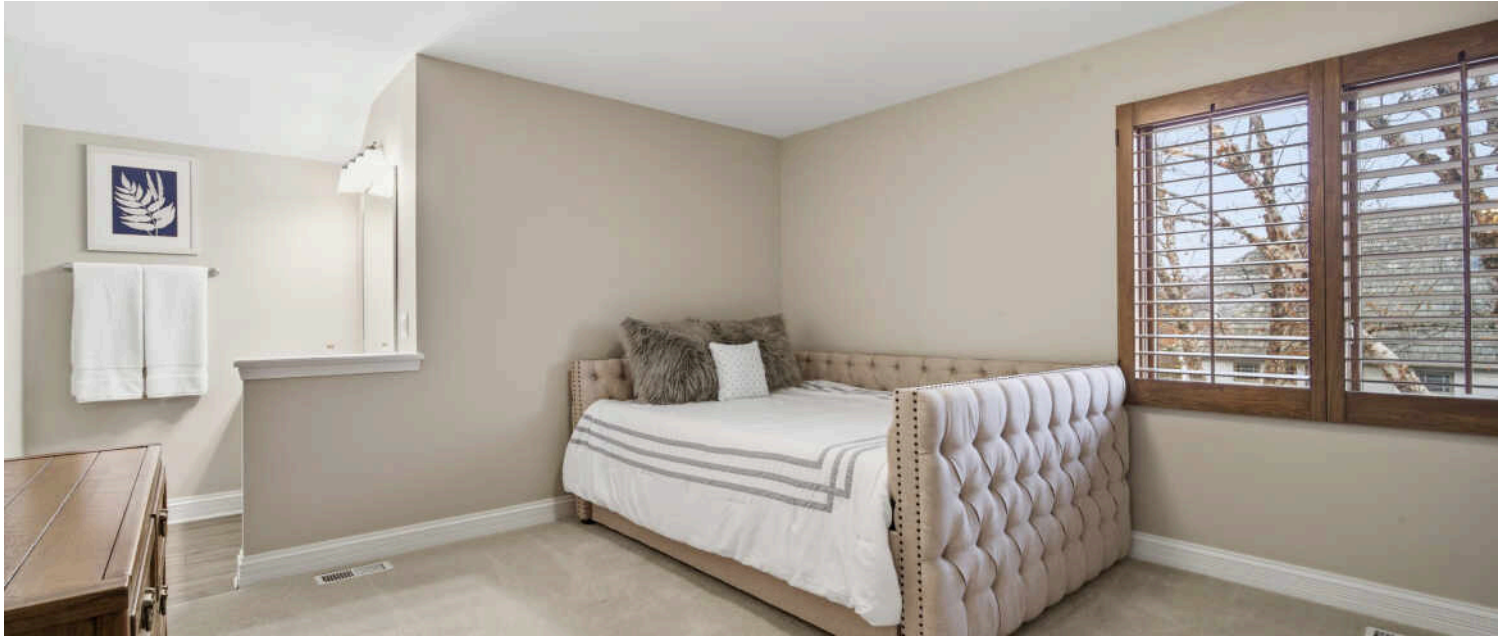








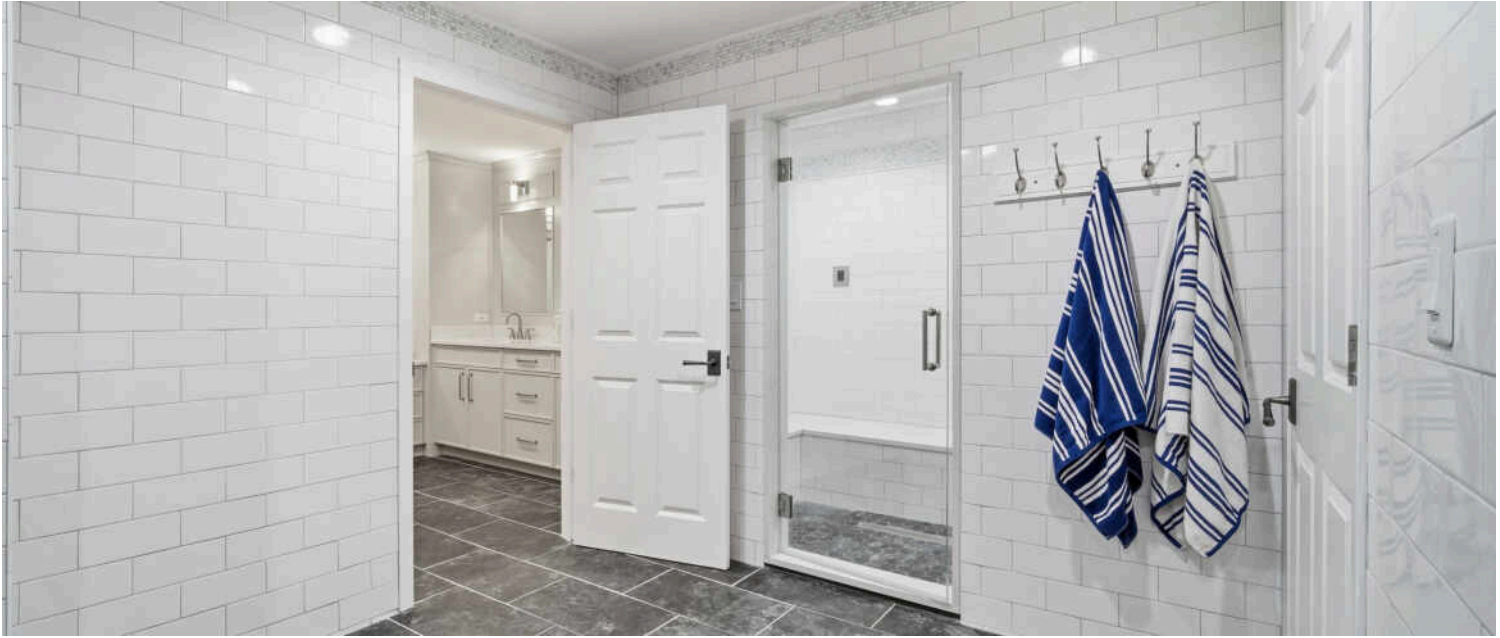
























@properties® | CHRISTIE'S  
INTERNATIONAL REAL ESTATE

*Leading* REAL ESTATE  
COMPANIES  
OF THE WORLD®

LP  
LUXURY  
PORTFOLIO  
INTERNATIONAL

