



28 COVENTRY ROAD | Northfield





- Nearly a half acre on a private cul de sac
- 5 bedrooms
- 3.2 baths
- 5800 total square footage of living
- Hardwood floors throughout
- Fabulous floor plan for entertaining
- First floor study
- Glenview Schools
- Glenview Park District
- Low Northfield Taxes







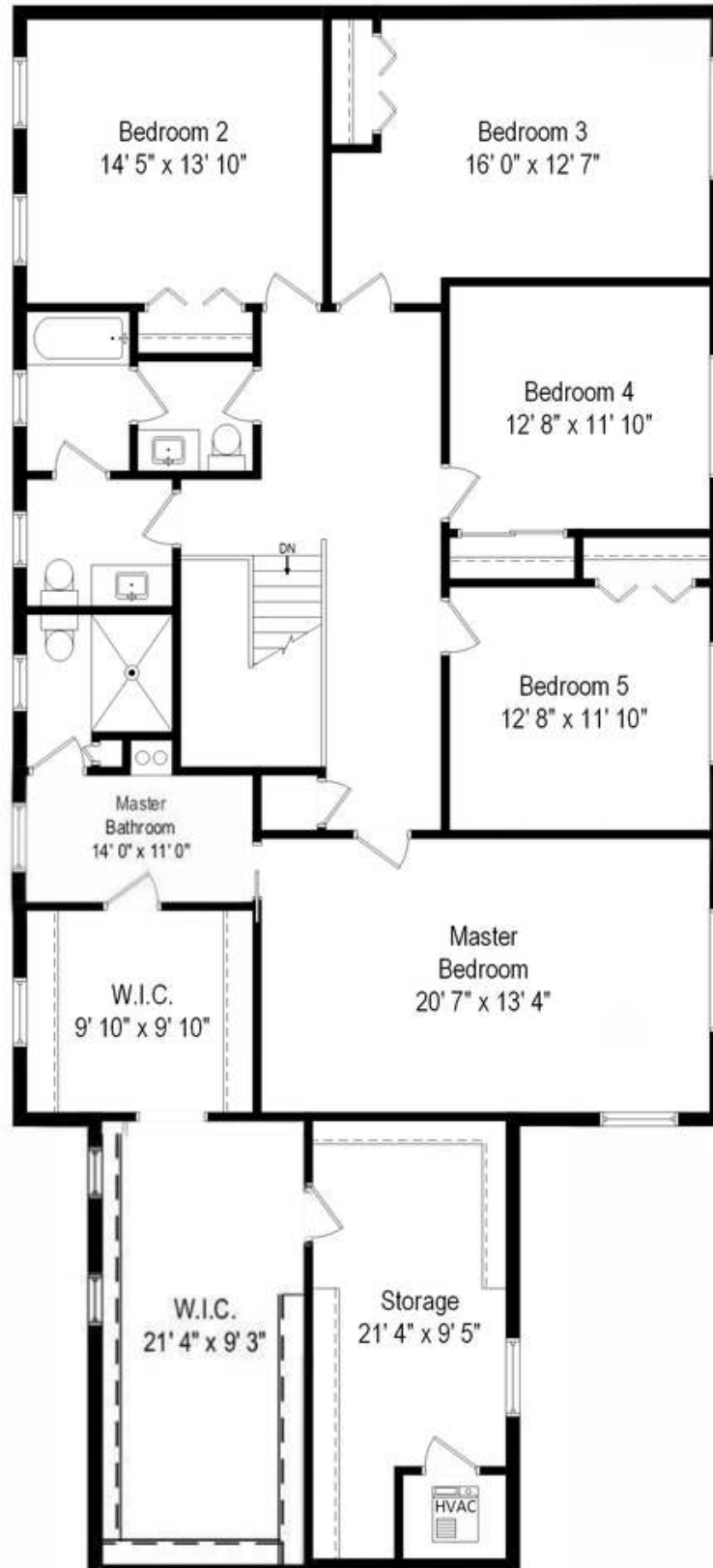




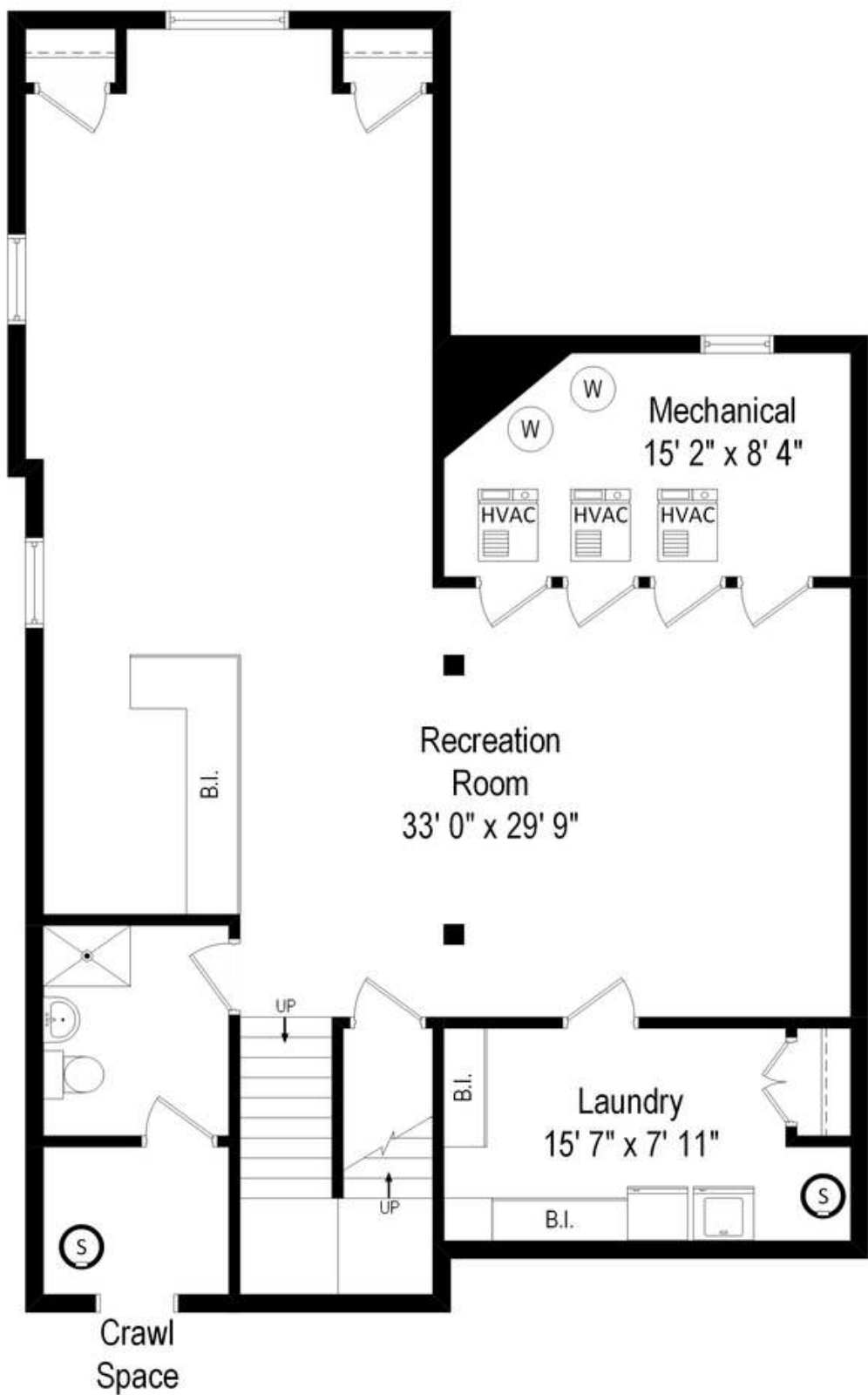
First Level



Second Level



Lower Level



@properties®

 LEADING REAL ESTATE
COMPANIES *of* THE WORLD®

Stop looking, start finding® atproperties.com  

28COVENTRY.INFO



Colleen Jennings Stein
DIRECT 847.722.9691
Homes@Colleenstein.com

Colleen
JENNINGS STEIN

All specifications, features, designs, price, assessments, taxes and materials are subject to change without notice. Depicted floor plans and architectural renderings are only an artist's impression.