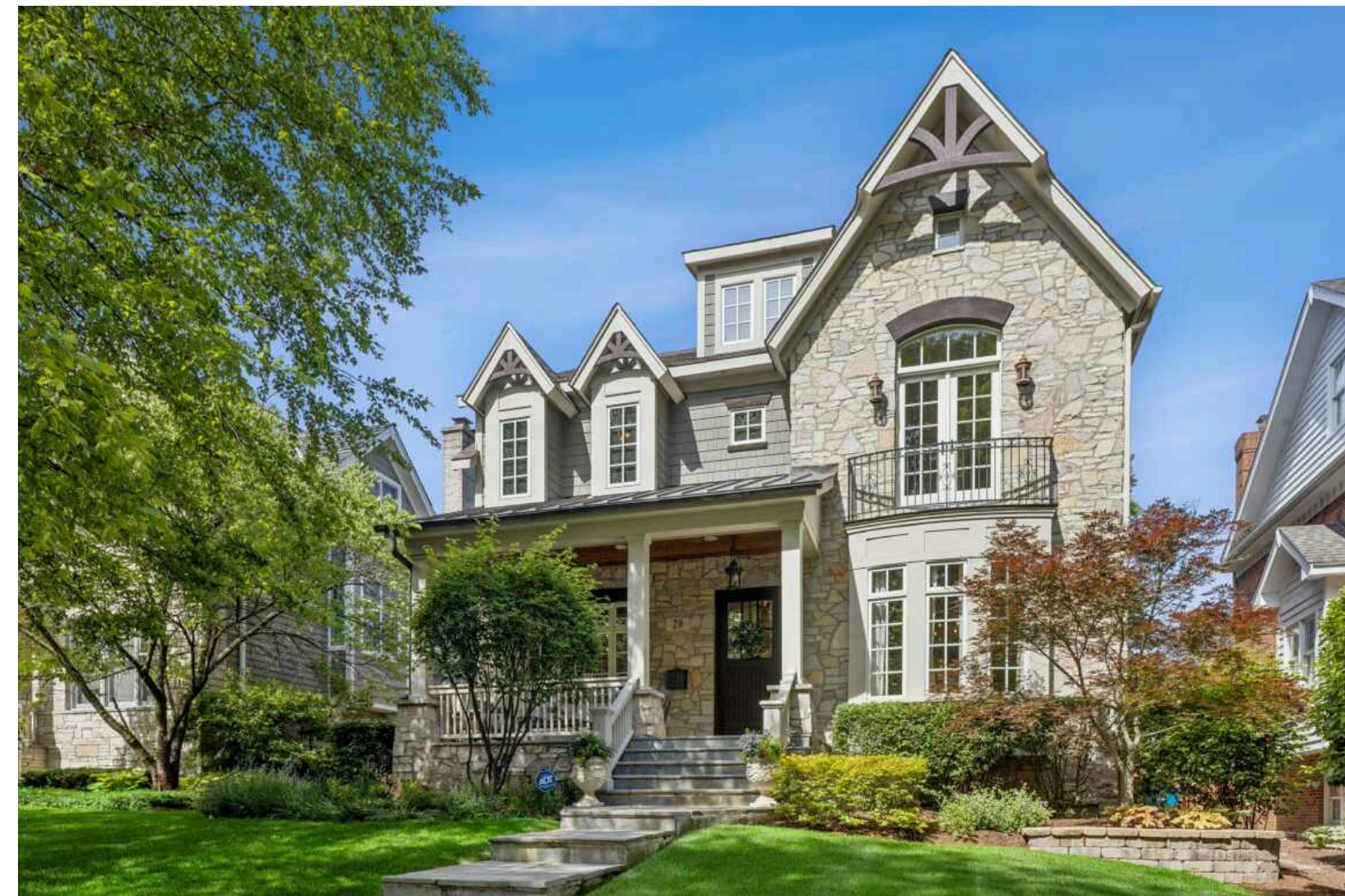




28 S ADAMS STREET  
HINSDALE

28 S ADAMS STREET · HINSDALE



@properties | CHRISTIE'S  
INTERNATIONAL REAL ESTATE

LUXURY  
PORTFOLIO  
INTERNATIONAL



**BRYAN BOMBA** BROKER

630.286.9242 mobile  
bbomba@atproperties.com  
www.bombamancini.com

BOMBA & MANCINI



**PAUL MANCINI** BROKER

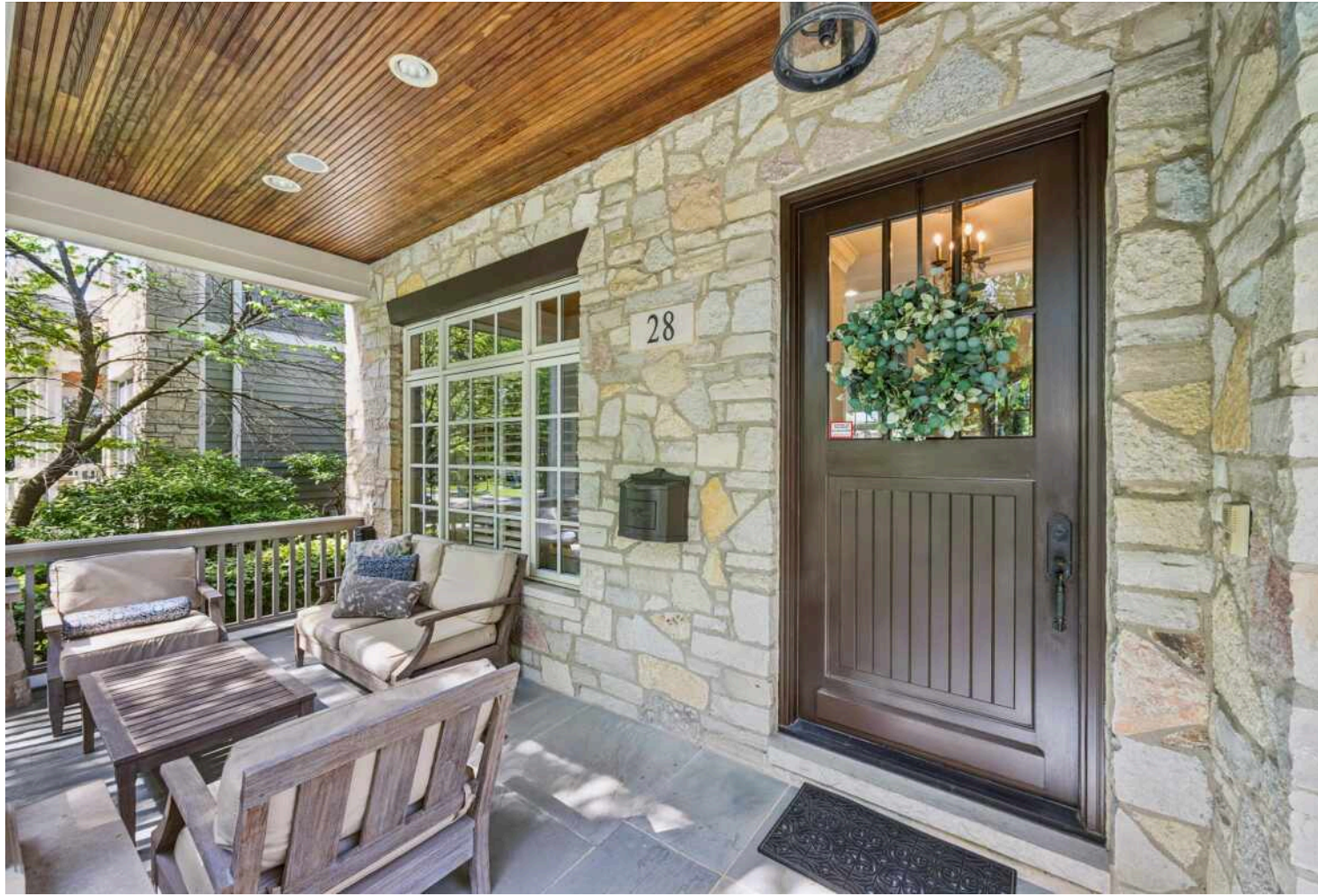
630.267.1899 mobile  
pmancini@atproperties.com  
www.bombamancini.com

28 S ADAMS STREET · HINSDALE



@properties | CHRISTIE'S  
INTERNATIONAL REAL ESTATE

LP LUXURY  
PORTFOLIO  
INTERNATIONAL



# 28 S ADAMS STREET METICULOUS DESIGN ON MONROE'S MOST COVETED QUIET BLOCK

## ROOM DIMENSIONS

Foyer .....	6'x12'
Dining Room .....	14'x14'
Kitchen .....	20'x14'
Breakfast Nook .....	13'x7'
Family Room .....	14'x15'
Office .....	12'x11'
Mud Room .....	6'x5'
Primary Bedroom .....	16'x14'
Bedroom Two .....	11'x18'
Bedroom Three .....	16'x13'
Bedroom Four .....	21'x15'
Laundry Room .....	7'x7'
Recreation Room .....	25'x19'
Game Room .....	20'x18'
Gym / Bedroom Five .....	11'x12'

## FEATURES

Transcend the ordinary in this meticulously curated home by Vine Properties. Because of its flawless condition, it's obvious that this house was loved every day of its existence. It's just perfect. Because it was built by Vine Properties, it's obvious that the level of design and finish are extraordinary. Ten foot ceilings. Divided light windows. SubZero & Wolf. Brakur cabinets. First floor office and designated mud room. Extraordinarily large primary suite. 2nd floor laundry. Gently elevated lot offering superior privacy. Very private rear yard with fencing and paver brick patio. It's very well-located as it is situated on a quiet block in a very 'walk to' block in the Monroe Elementary School neighborhood.



**BRYAN BOMBA** BROKER

630.286.9242 mobile  
bbomba@atproperties.com  
www.bombamancini.com



**PAUL MANCINI** BROKER

630.267.1899 mobile  
pmancini@atproperties.com  
www.bombamancini.com













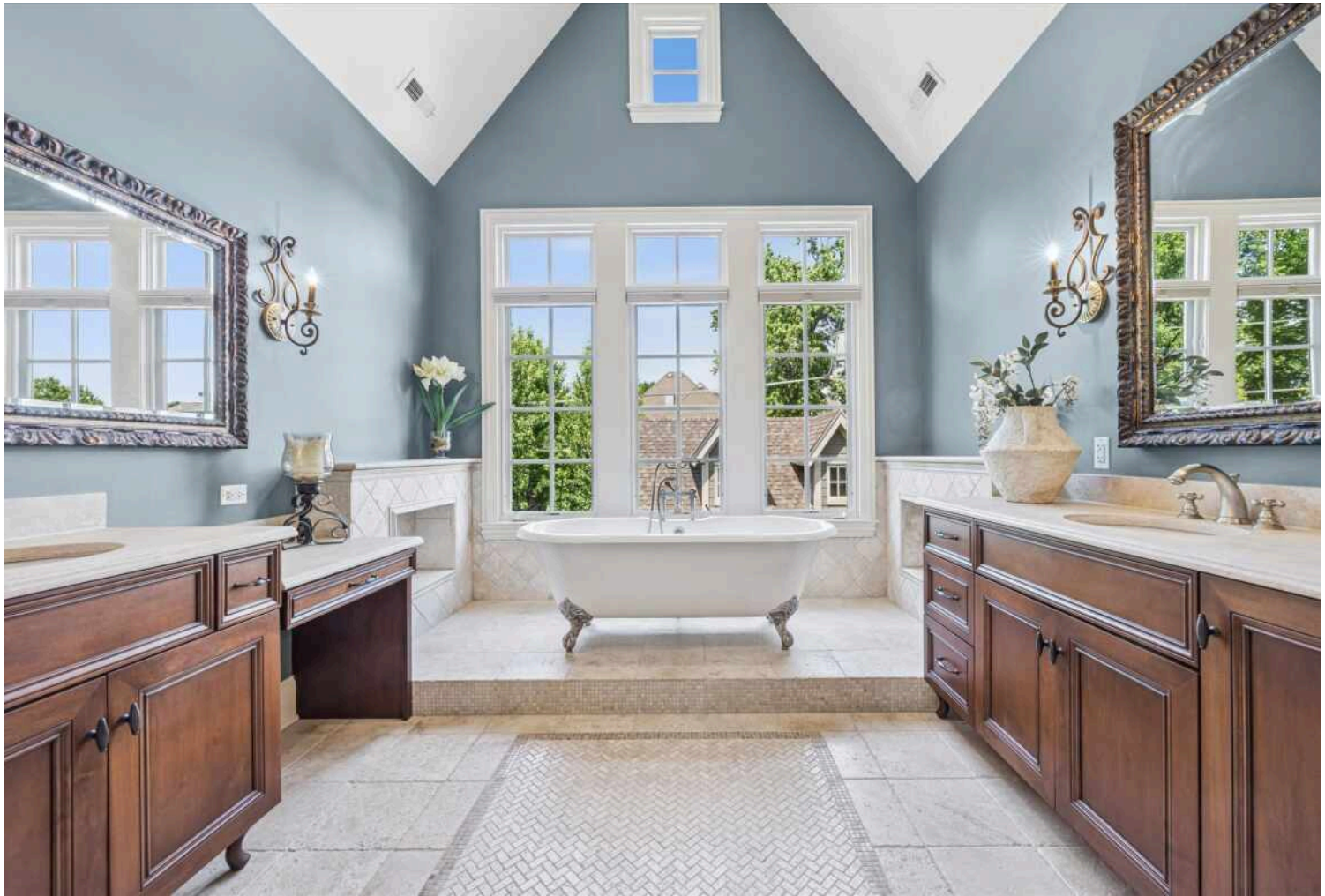






















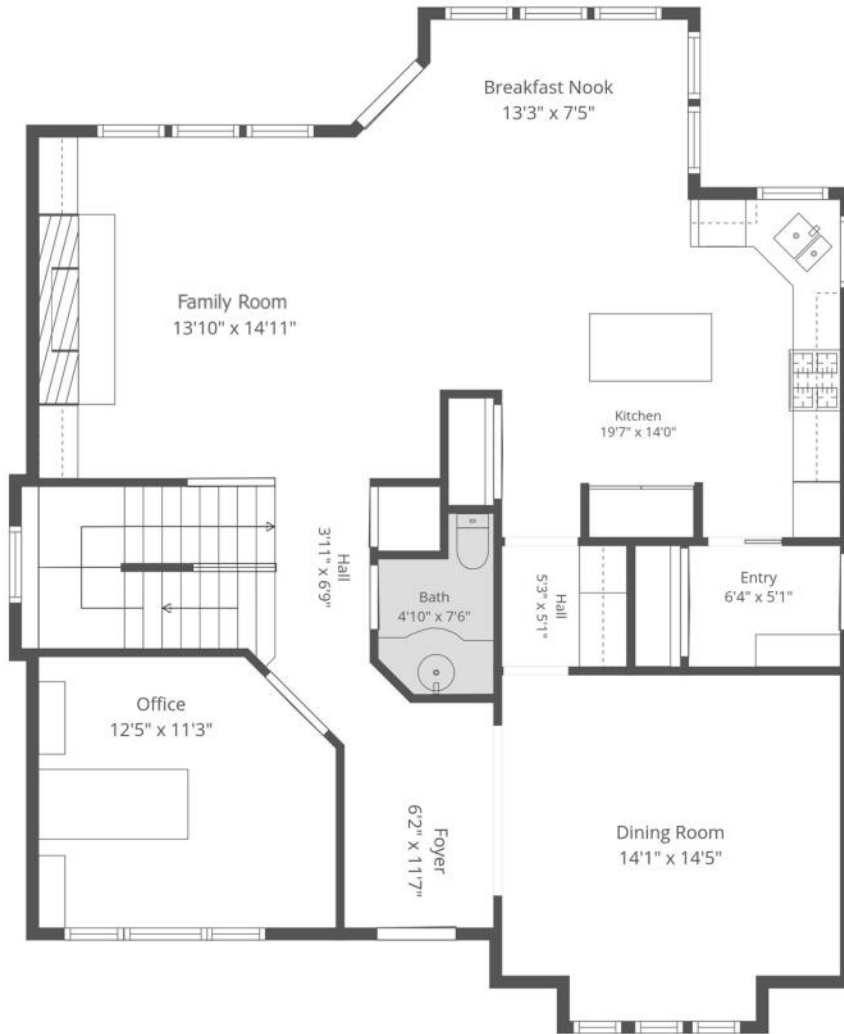




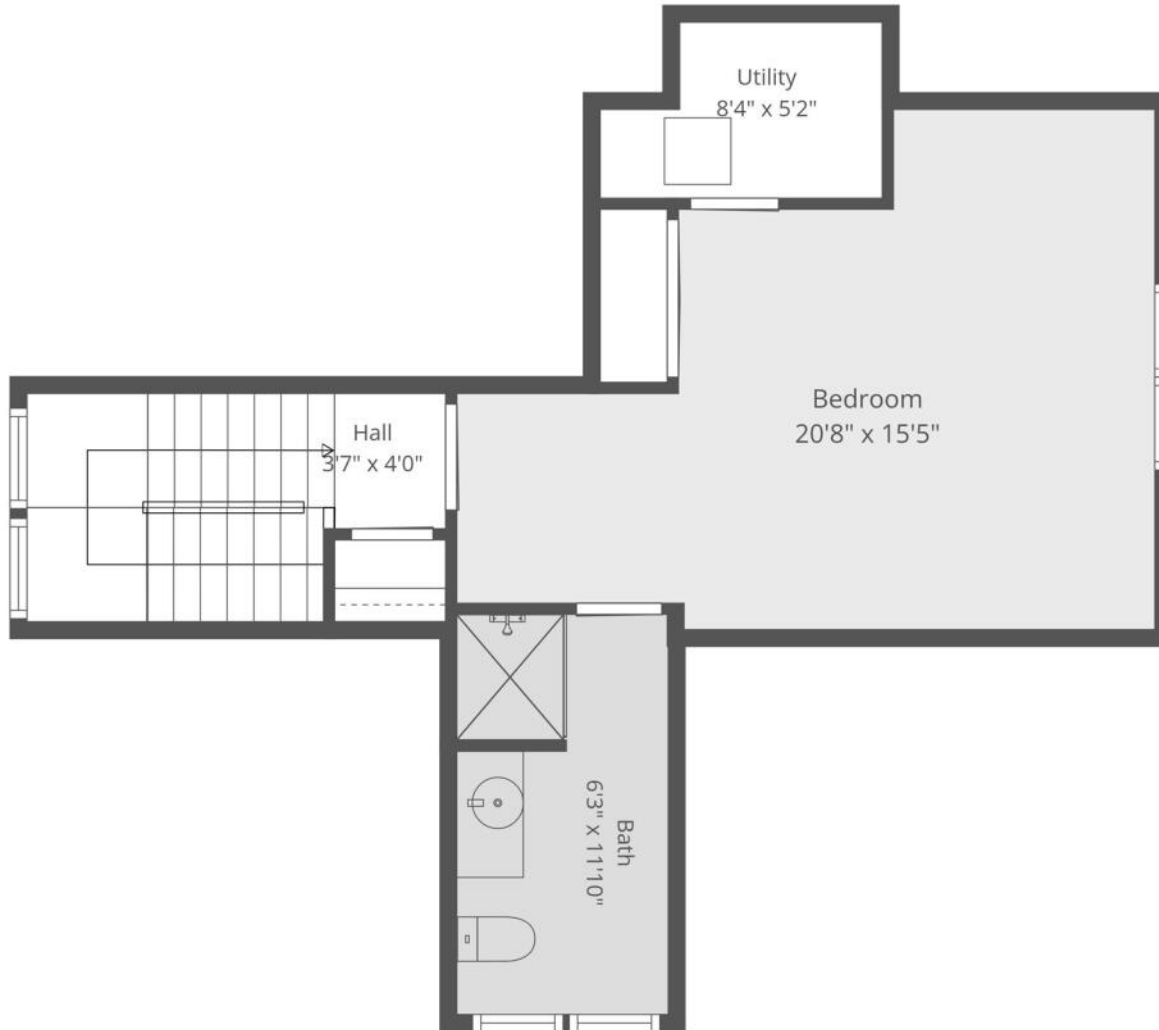
















**HINSDALE'S** HISTORIC DOWNTOWN AND BEAUTIFUL HOMES ATTRACT SOME OF THE STATE'S MOST AFFLUENT RESIDENTS, EARNING THE SUBURB ITS RANKING AS ONE OF THE WEALTHIEST ZIP CODES IN ILLINOIS.

*Locals love the natural beauty and historic elegance of Hinsdale, which boasts a number of scenic parks and architectural landmarks.*

Downtown Hinsdale offers a step back in time. The downtown district is on the National Register of Historic Places, with several historic buildings dating back to before the community was incorporated in the 1870s. Residents and visitors will also find award-winning restaurants that will satisfy any palate along with a variety of shops, from jewelry stores and upscale boutiques to craft shops and more.

The community has a wealth of amenities such as the Hinsdale Community Swimming Pool, Katherine Legge Memorial Park, and Burlington Park, which is home to various annual events including the farmers market, Fine Arts Festival, and Uniquely Thursdays concert series. There are also numerous parks and athletic facilities for those who enjoy sports like tennis, baseball, and soccer.

Hinsdale has easy access to the Tri-State Tollway, Stevenson Expressway, and three train stations along Metra's BNSF Railway.





@properties® | CHRISTIE'S  
INTERNATIONAL REAL ESTATE

*Leading* REAL ESTATE  
COMPANIES  
OF THE WORLD®

LP  
LUXURY  
PORTFOLIO  
INTERNATIONAL

