

2929 NORTHCREEK DRIVE  
WOODRIDGE





#### ROOM DIMENSIONS

FAMILY ROOM : 15' × 14'

LIVING ROOM : 11' × 9'

KITCHEN : 10' × 10'

KITCHEN : 17' × 11'

PRIMARY BEDROOM : 17' × 14'

BEDROOM TWO : 14' × 10'

BEDROOM THREE : 13' × 11'

BEDROOM FOUR : 10' × 9'

UTILITY ROOM : 19' × 19'

STORAGE 1 : 12' × 8'

STORAGE 2 : 12' × 8'

4 BEDROOM

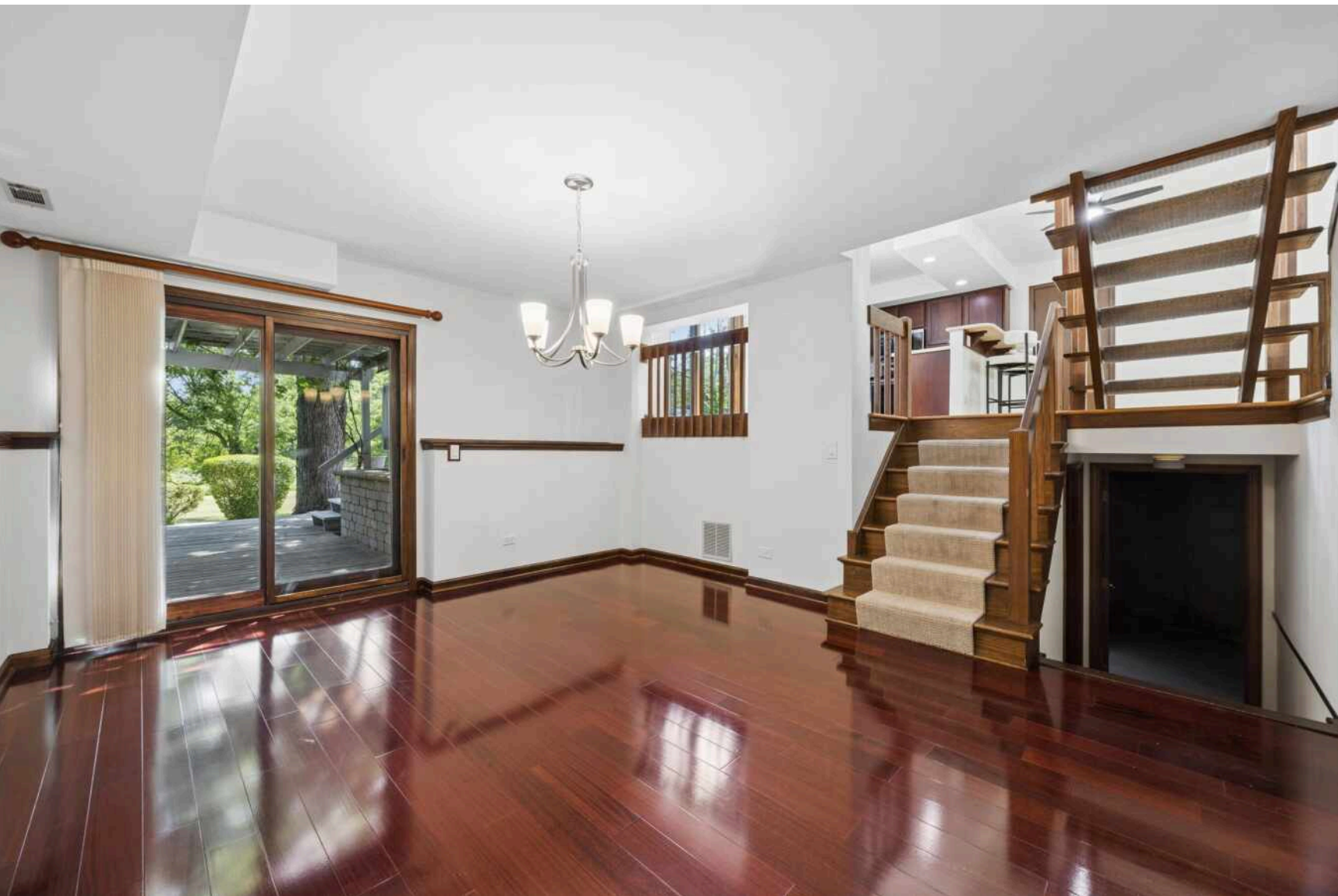
2 BATH

TAXES: \$9,851

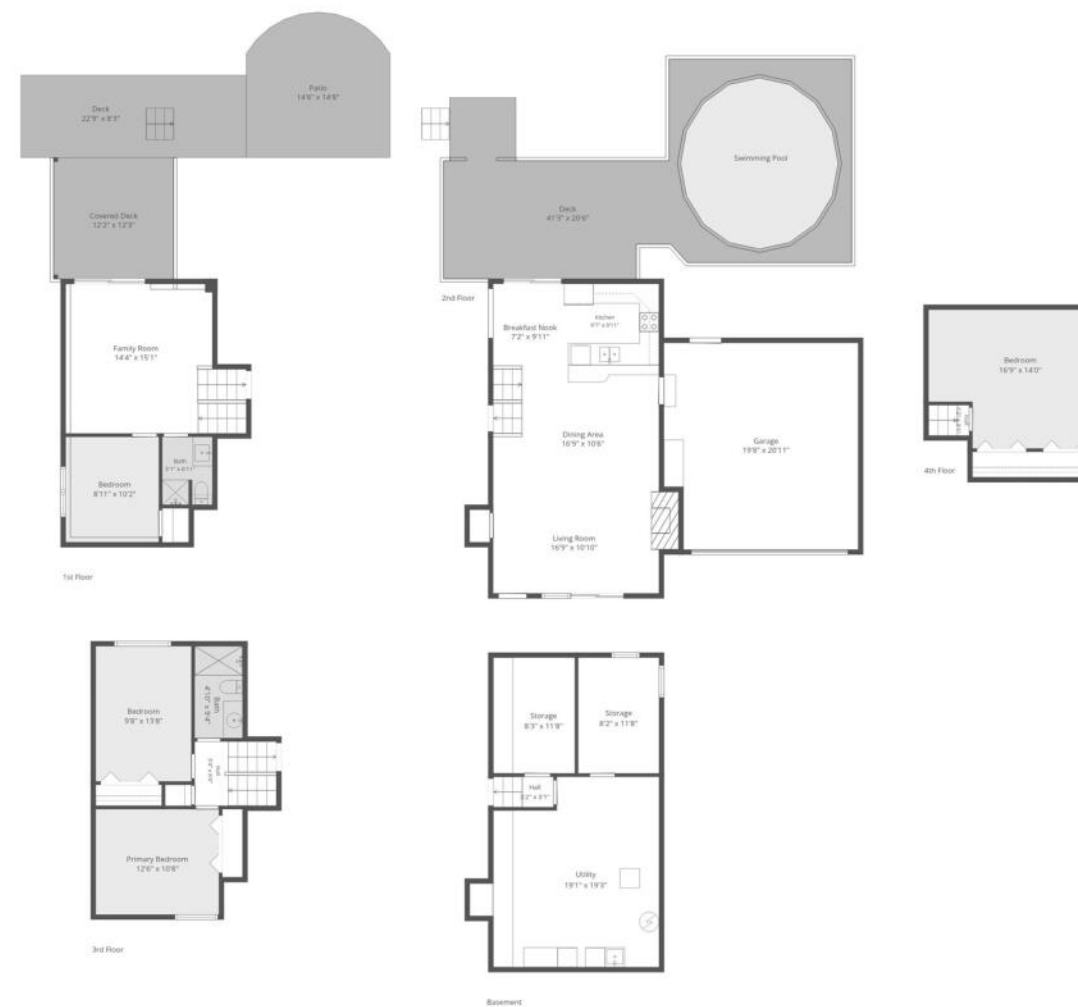
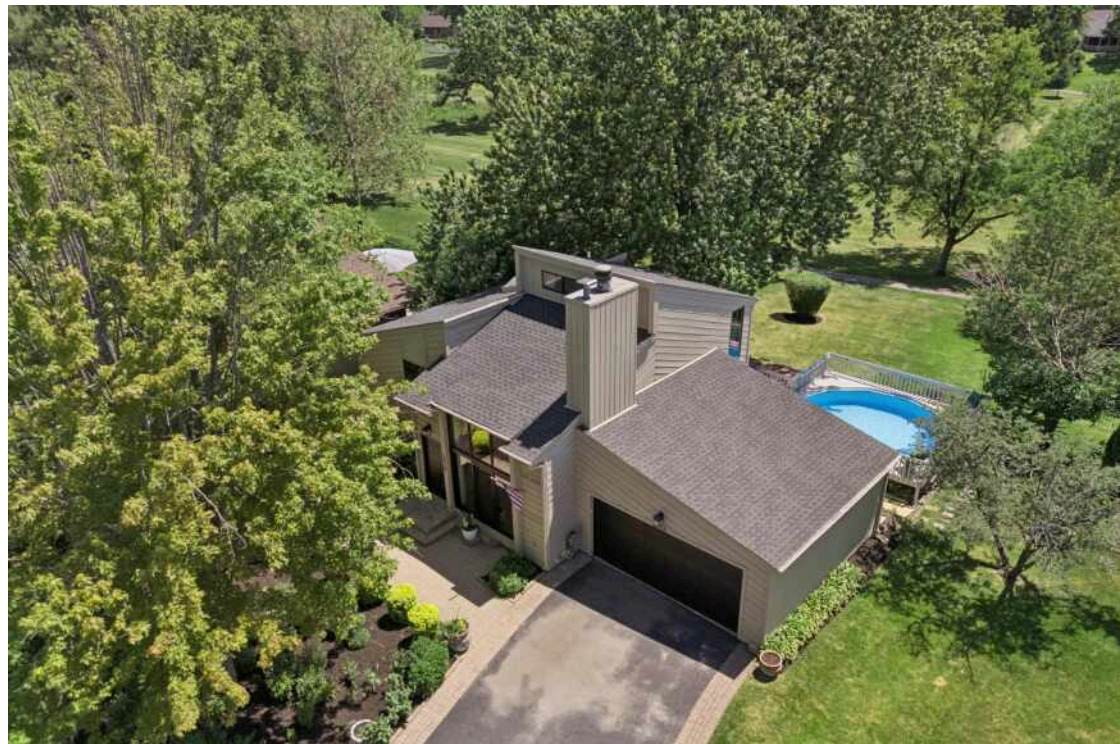
## BEAUTIFUL HOME ON BREATHTAKING SETTING

This unique home situated in sought after Mending Wall Subdivision is nestled on a cul-de-sac and surrounded by mature trees. The property features 4 bedrooms, 2 full bathrooms and a spacious two-story family room with a fireplace. The kitchen with eating area opens to a large deck overlooking the beautiful backyard and is adjacent to a walking/bike path. The view is spectacular with its open space and privacy! A walk out lower level to patio compliments the large deck for entertaining. Great space with 4 BR, 2 BA and an attached 2 car garage. Conveniently located near major highways, the Seven Bridges Ice Arena, parks and the Gateway Wetlands Trail. This home provides an opportunity for multitude outdoor activities in a friendly family neighborhood!









**Total: 1639 sq. ft**  
 Basement: 24 sq. Ft, 1st Floor: 401 sq. Ft, 2nd Floor: 533 sq. Ft, 3rd Floor: 416 sq. Ft, 4th Floor: 265 sq. ft  
 Excluded Areas: Utility: 312 sq. Ft, Storage: 196 sq. Ft, Patio: 195 sq. Ft,  
 Covered Deck: 149 sq. Ft, Deck: 659 sq. Ft, Garage: 398 sq. Ft,  
 Fireplace: 13 sq. Ft, Walls: 253 sq. ft

Measurements Are Highly Reliable But For Marketing Only. Produced By The Collective.





RICH IN NATURAL BEAUTY, **WOODRIDGE** IS A GROWING AND VIBRANT COMMUNITY LOCATED IN THE SOUTHWEST SUBURBS OF CHICAGO.

Residents enjoy several parks and wide-open spaces, including a water park, 18-hole golf course, skate park, recreation center, as well as various bike paths, picnic facilities, and sports fields.

Woodridge is also home to several corporate headquarters. Since the late 70s, it has continued to thrive as a business community.

Two interstates run through Woodridge, including the Veterans Memorial Tollway (I-355) and the Stevenson Expressway (I-55). Commuter rail service is accessible in nearby Lisle and Downers Grove.

The majority of Woodridge secondary school students are served by Community High School District 99 schools, including Downers Grove North or South High Schools. Some students are served by Lemont District 210 or Naperville schools in District 203.



NOTES \_\_\_\_\_

\_\_\_\_\_

\_\_\_\_\_

\_\_\_\_\_

\_\_\_\_\_

\_\_\_\_\_

\_\_\_\_\_

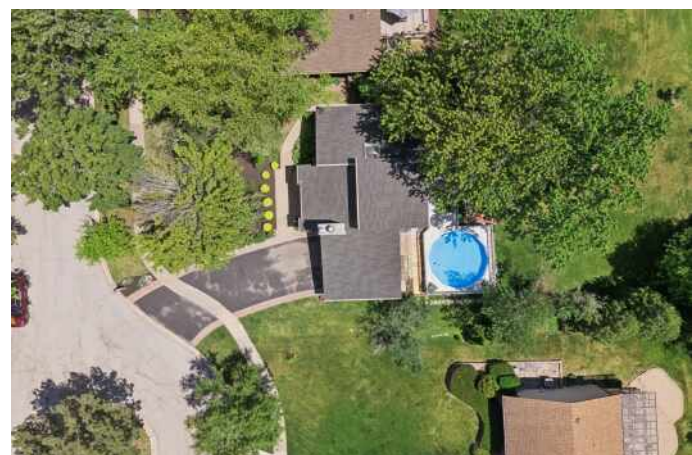
\_\_\_\_\_

\_\_\_\_\_

\_\_\_\_\_

\_\_\_\_\_

\_\_\_\_\_





## KRISTINE OAKEY

630.327.6007

[SOGROUP@ATPROPERTIES.COM](mailto:SOGROUP@ATPROPERTIES.COM)

[KRISTINEOAKEY@ATPROPERTIES.COM](mailto:KRISTINEOAKEY@ATPROPERTIES.COM)



**SALACH  
OAKEY  
GROUP**



## DIANE SALACH

630.327.2926

[DIANESALACH@ATPROPERTIES.COM](mailto:DIANESALACH@ATPROPERTIES.COM)

[SOHINSDALE.COM](http://SOHINSDALE.COM)