



298 W PARK DR
TWIN LAKES

298 W PARK DR · TWIN LAKES



@properties | CHRISTIE'S
INTERNATIONAL REAL ESTATE

LP LUXURY
PORTFOLIO
INTERNATIONAL



STEPHANIE PARENT REALTOR

773.209.3465 mobile
steph@atproperties.com
www.stephanieparent.com

Stephanie Parent
AT THE LAKE

298 W PARK DR · TWIN LAKES



@properties | CHRISTIE'S
INTERNATIONAL REAL ESTATE

LP LUXURY
PORTFOLIO
INTERNATIONAL



298 W PARK DR 114' FRONTAGE ON LAKE MARY

ROOM DIMENSIONS

Great Room	24'x23'
Family Room	15'x18'
Dining Room	16'x11'
Kitchen	16'x12'
Primary Bedroom	19'x22'
Second Bedroom	16'x13'
Third Bedroom	16'x13'
Fourth Bedroom	15'x11'
Fifth Bedroom	29'x18'
Office/Den	10'x8'
Loft	23'x18'
Laundry	6'x9'

FEATURES

Rare privacy on a peninsula lot, where the water follows you everywhere. An incredible 114' of level frontage on Lake Mary and additional channel frontage. Take in the views of the lake from many vantage points. Main level primary suite has a fireplace, custom closet, and luxurious en-suite with radiant heated floors, freestanding soaking tub, massive double shower, and separate vanities, all framed by views of the lake. The kitchen is a showstopper featuring an oversized quartz island designed for hosting. The second level addition completed 2025 adding 1200 sq ft. The covered porch has remote-controlled shades and heaters offering year-round relaxation. 5 bedrooms and 3.5 baths for all your friends and family. The oversized heated, 3 car garage for all your lake toys. Virtual fire.

- 114' level frontage on Lake Mary, additional frontage on channel
- 1200 sq ft addition completed in 2025
- Stunning views of the lake from most rooms
- Covered lakeside heated porch with remote control shades
- Custom stone firepit lakeside
- Large quartz island in kitchen makes entertaining a breeze
- Lakeside primary and stunning en-suite with oversized shower, free-standing tub, and heated floors
- 3 bedrooms on the main level
- 3 car heated garage with room for all your lake toys



STEPHANIE PARENT REALTOR

773.209.3465 mobile

steph@atproperties.com
www.stephanieparent.com











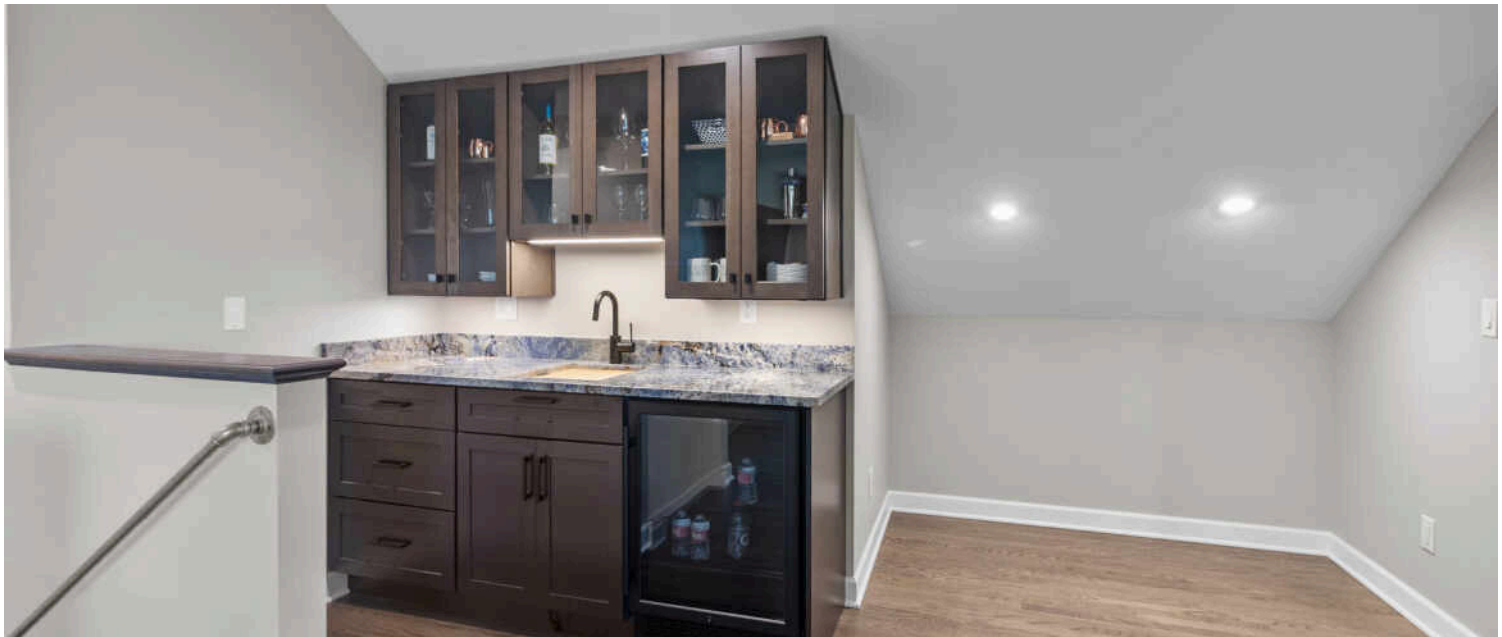




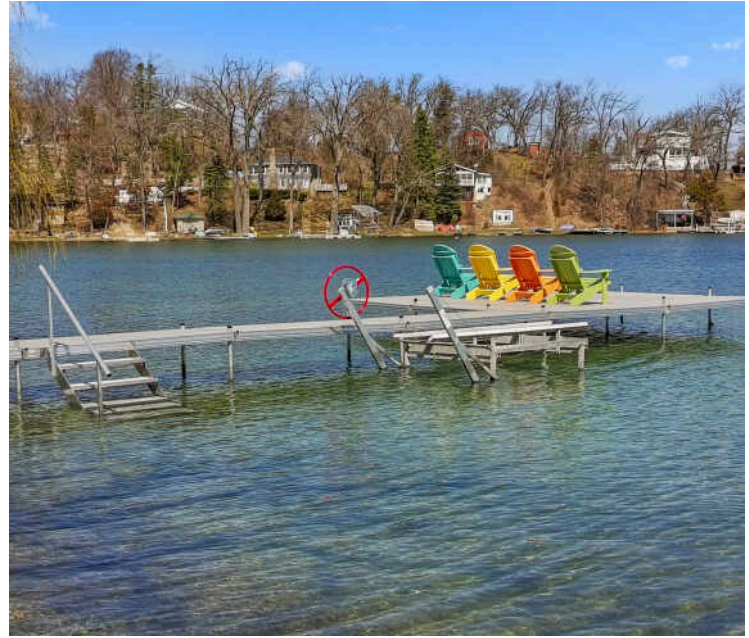








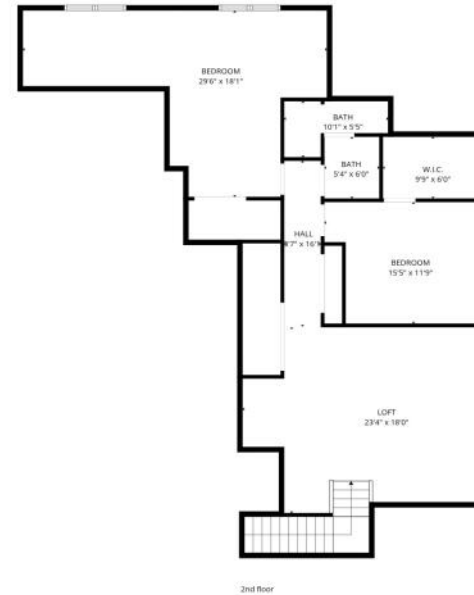
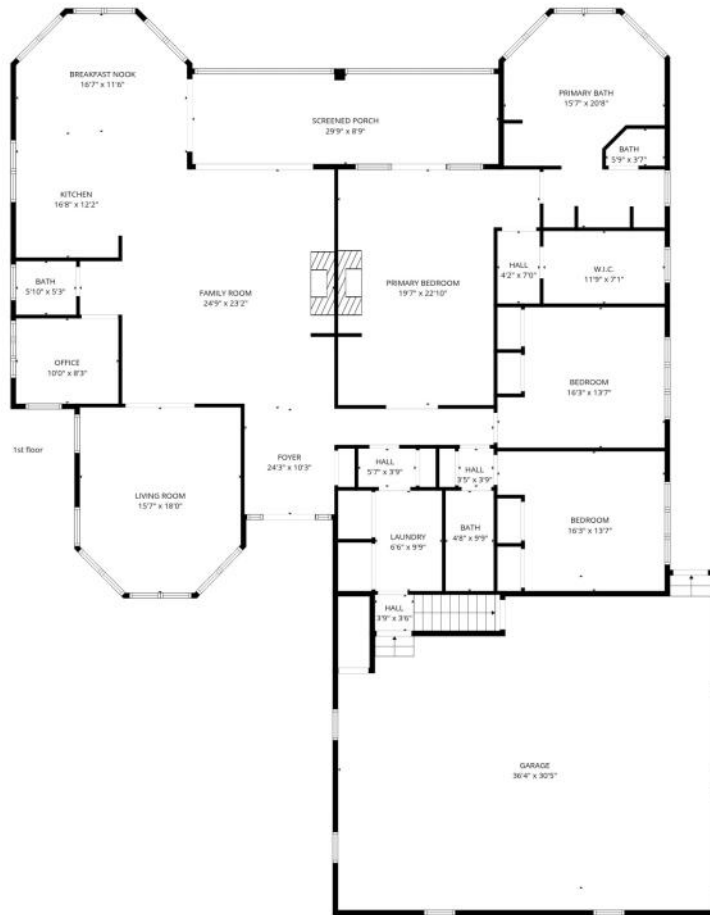












TOTAL: 4087 sq. ft
 1st floor: 2884 sq. ft, 2nd floor: 1203 sq. ft
 EXCLUDED AREAS: GARAGE: 1040 sq. ft, SCREENED PORCH: 260 sq. ft, LOW CEILING: 27 sq. ft,
 WALLS: 310 sq. ft

FLOOR PLAN CREATED BY CUBICASA APP. MEASUREMENTS DEEMED HIGHLY RELIABLE BUT NOT GUARANTEED.



NAMED AFTER LAKE MARY AND LAKE ELIZABETH, **TWIN LAKES** IS A POPULAR DESTINATION FOR RECREATION ENTHUSIASTS.

Locals love a variety of recreational opportunities along with local events and entertainment, including the Aqanut Water Shows.

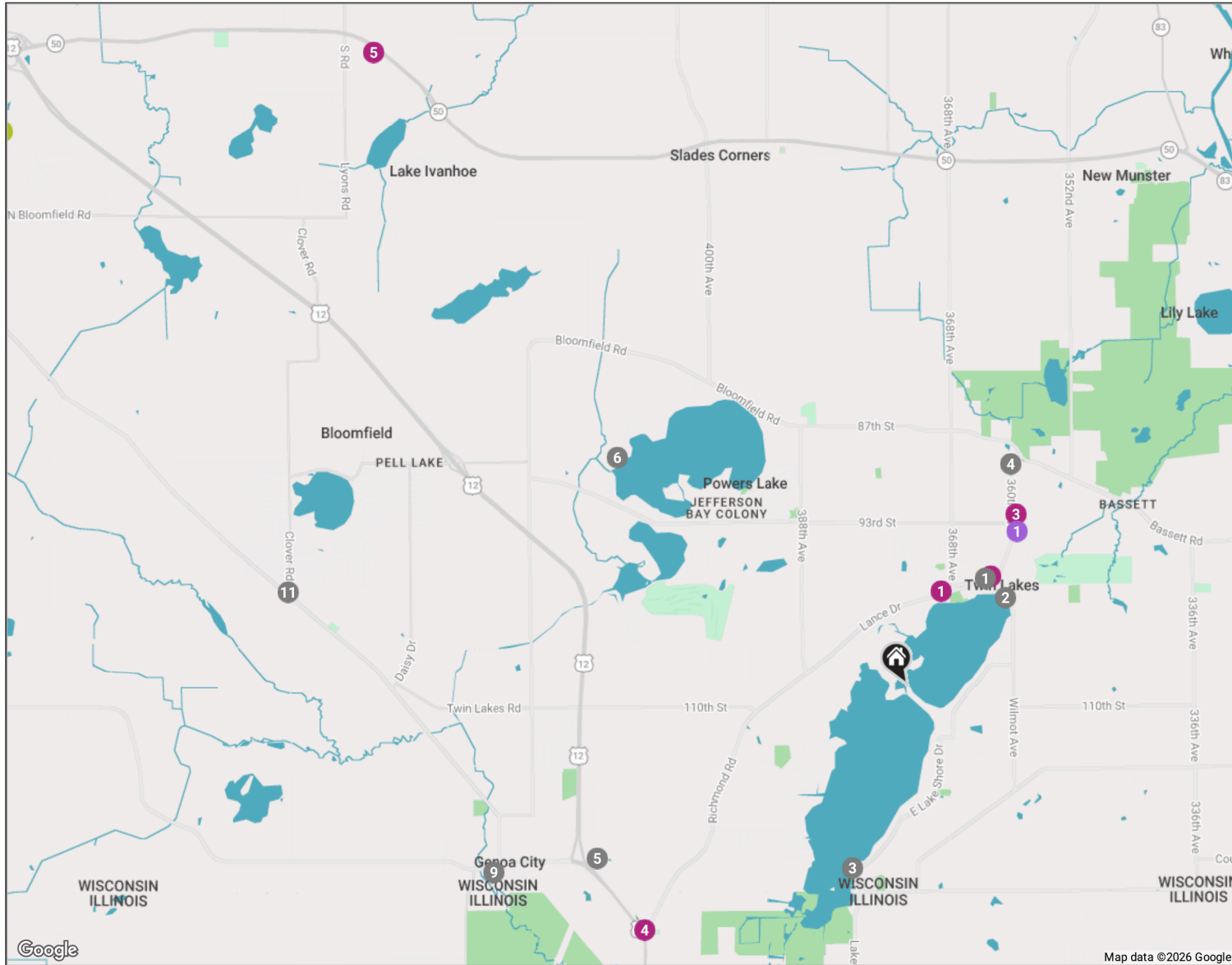
Spanning nearly 1,000 acres, the lakes attract residents and visitors with a variety of aquatic activities including boating, waterskiing, swimming, and fishing. The community is also home to a number of parks, athletic fields, picnic areas, and hiking trails as well as the Twin Lakes Country Club, which welcomes golfers of all skill levels.

Twin Lakes holds a number of annual events, headlined by the Aqanuks Water Show at Lance Park. The free show takes place every week of the summer, dazzling spectators with impressive water acrobatics. The amphitheater at Lance Park is also the site of Movies in the Park, which features outdoor movies at dusk.

NEIGHBORHOOD GUIDE MAP

298 W PARK DR

22



NEIGHBORHOOD GUIDE

RESTAURANTS

- 1 Bodi's Bake Shop
306 E MAIN ST, 1.1 MI
- 2 Manny's Snack Shack
404 S LAKE AVE, 1.1 MI
- 3 Sand Bar and Island Grill
3101 E LAKE SHORE DR, 1.5 MI
- 4 The Blue Goose
1205 N LAKE AVE A, 2.0 MI
- 5 Herner's Hideaway
202 WILLIAMS RD, 2.9 MI
- 6 The Rock Bar II
N1530 POWERS LAKE RD, 3.0 MI
- 7 Doyle's Pub
5604 MILL ST, 3.6 MI
- 8 Paisano's On Broadway
Italian Steakhouse
5614 BROADWAY ROAD, 3.7 MI
- 9 Fitzgerald's Genoa Junction
727 MAIN STREET, 3.7 MI
- 10 Wilmot Stage Stop
30646 113TH STREET, 4.2 MI
- 11 Upper Crust Pizzeria
N1070 COUNTY TRUNK H, 5.2 MI
- 12 Crandall's Restaurant
10441 ILLINOIS 47, 9.4 MI
- 13 The Boat House Bar & Grill
N2062 S LAKE SHORE DR, 9.4 MI
- 14 The Geneva Inn
N2009 SOUTH LAKE SHORE DRIVE,
9.5 MI
- 15 Ristorante Brissago
7036 GRAND GENEVA WAY, 9.6 MI
- 16 Magpie's Den & Pen
642 W MAIN ST, 10.0 MI
- 17 Champs Sports Bar & Grill
747 W MAIN ST, 10.1 MI

SHOPPING

- 18 Next Door Pub & Pizzeria
411 INTERCHANGE N, 10.3 MI
- 1 Twin Lakes Marine Inc.
134 LANCE DRIVE, 0.8 MI
- 2 Birch on Main (formerly
Adcock Farm + Co)
334 E MAIN ST, 1.1 MI
- 3 Dollar General
740 NORTH LAKE AVENUE, 1.7 MI
- 4 International House of
Wine and Cheese
11302 U.S. 12, 2.9 MI
- 5 Lake Geneva Country
Meats
5907 WISCONSIN 50, 6.8 MI
- 6 Target
660 NORTH EDWARDS BOULEVARD,
9.5 MI

- 7 Brick & Mortar Home and
Outdoor
222 CENTER ST, 10.0 MI
- 8 Edie Boutique
737 W MAIN ST, 10.1 MI
- 9 Brick & Mortar Home
832 GENEVA ST, 10.2 MI

GROCERY

- 1 Berkot's Super Foods
600 NORTH LAKE AVENUE, 1.6 MI
- 2 ALDI
200 NORTH EDWARDS BOULEVARD
SUITE 1, 9.2 MI

GYM

- 1 Lake Geneva Tennis &
Pickleball
630 VETERANS PKWY, 8.8 MI

NO REPRESENTATIONS ARE MADE REGARDING THE ACCURACY OF THE INFORMATION PROVIDED.
ALL DATA IS SUBJECT TO CHANGE AND SHOULD BE VERIFIED WITH LOCAL SOURCES.

@properties® | CHRISTIE'S
INTERNATIONAL REAL ESTATE

Leading REAL ESTATE
COMPANIES
OF THE WORLD®

LP
LUXURY
PORTFOLIO
INTERNATIONAL

