

2 EATON COURT ELMHURST

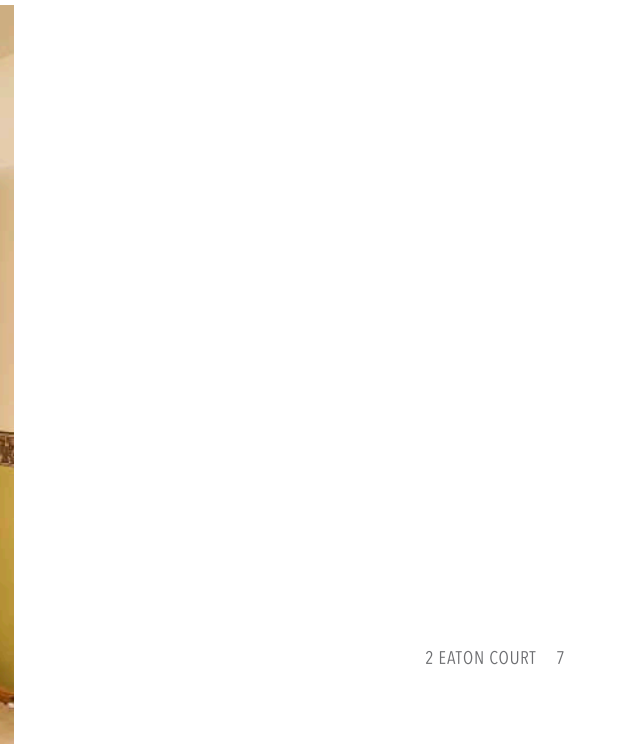
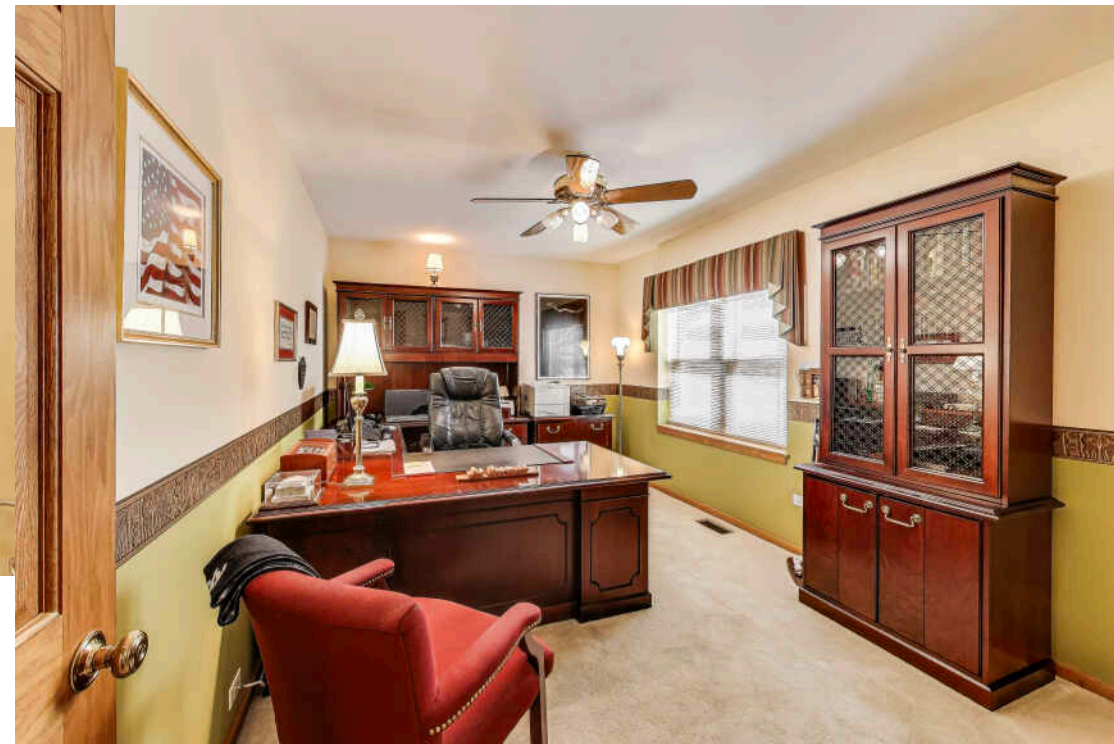
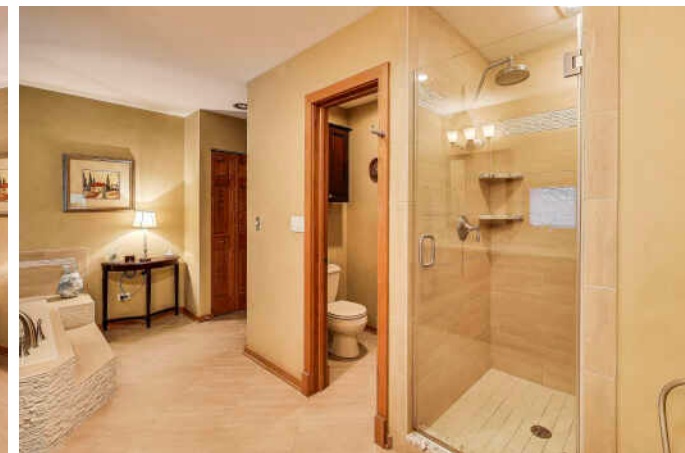


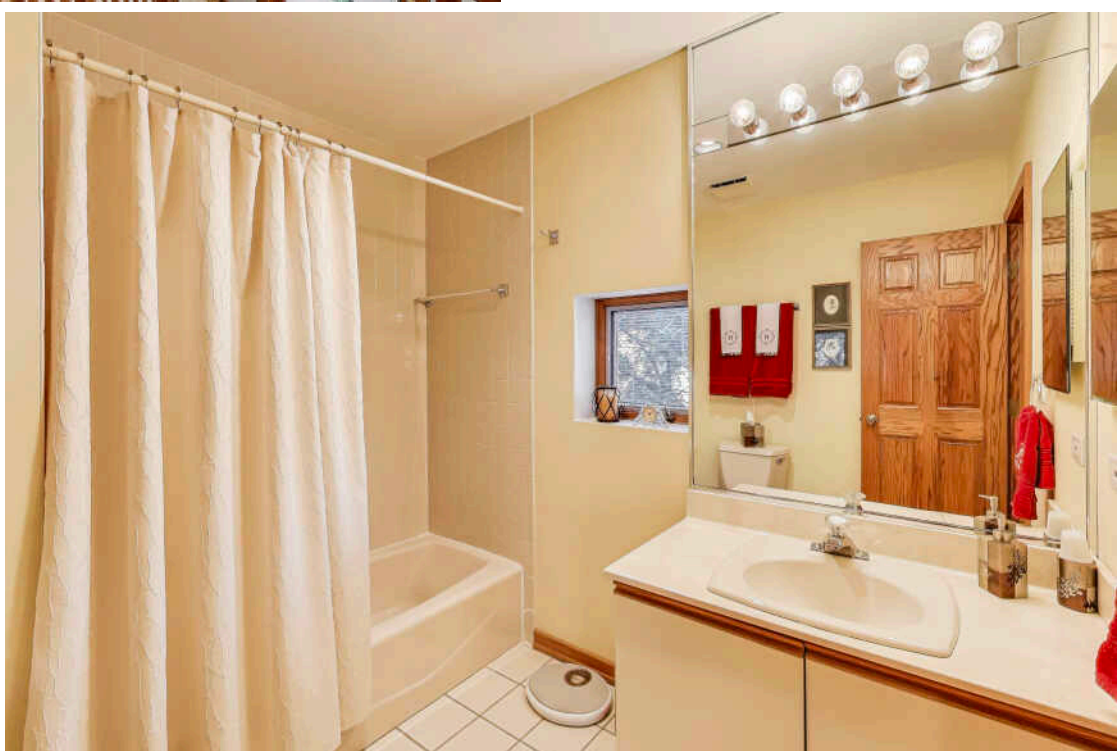
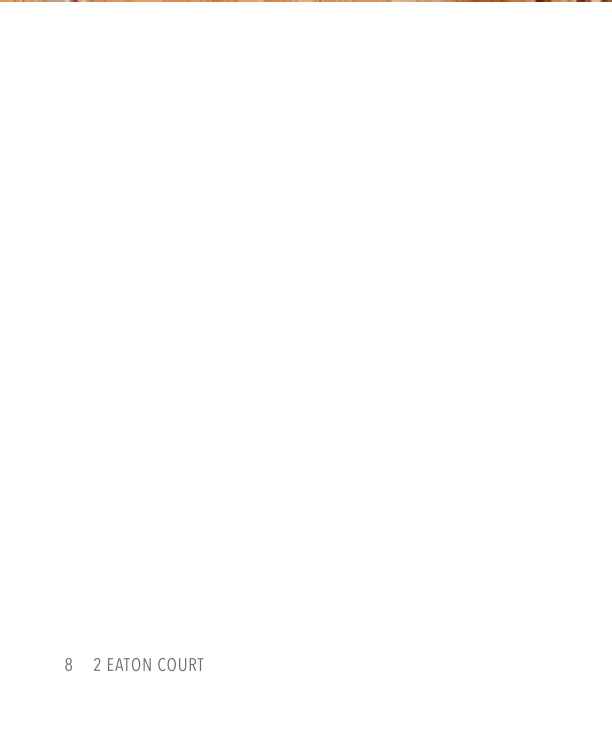
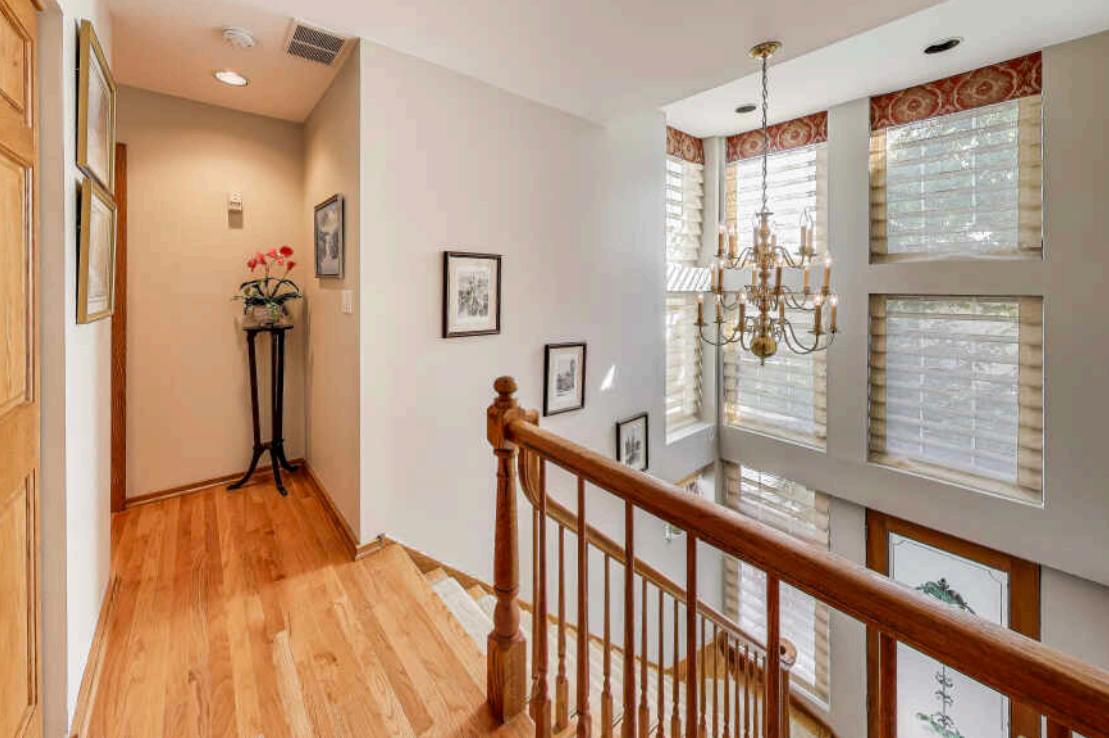


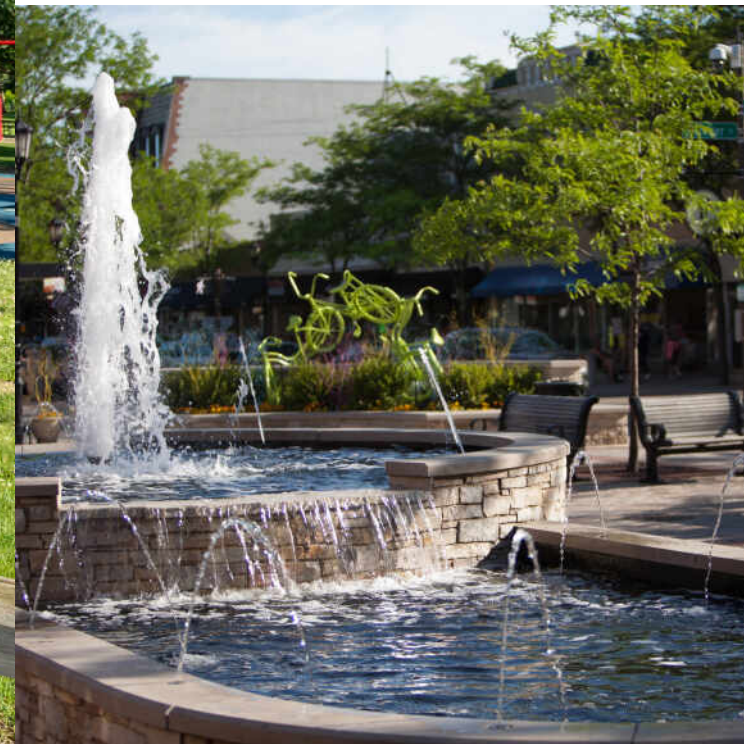
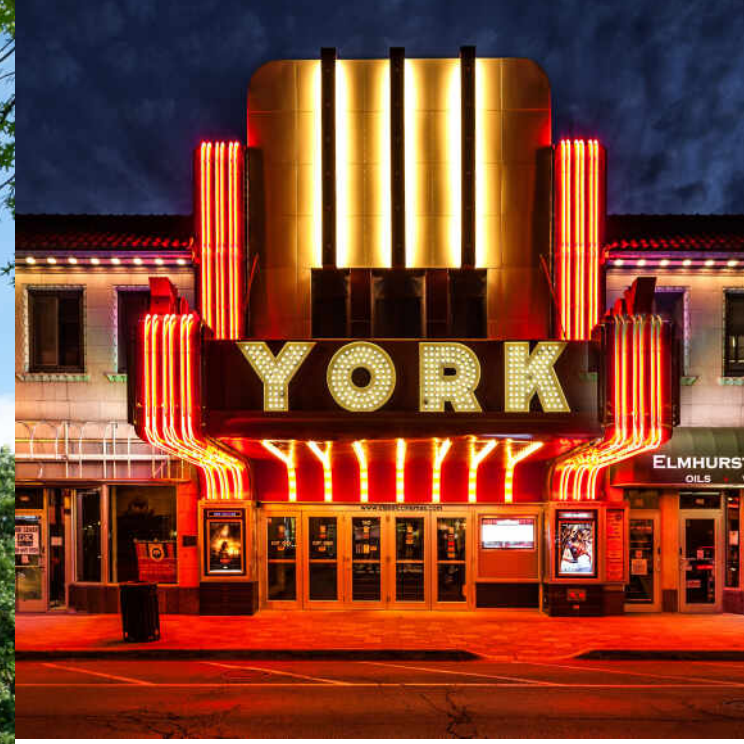
3 BEDROOM
2.1 BATH
TAXES: \$9,133
ASSESSMENTS: \$360 / MONTH

- Rarely available free standing single-family brick and stone home tucked away amongst townhomes in a cul-de-sac setting all while staying close to everything Elmhurst has to offer
- Meticulously maintained 3 bedroom, 2.1 bath home offers thoughtful updates and timeless details throughout
- Sunlit open foyer and beautiful hardwood floors that flow seamlessly throughout the first level
- Spacious living room includes large windows and gas fireplace
- Breakfast area and kitchen feature quality cabinetry, stainless steel appliances, and a functional layout
- 2nd level includes a spacious primary suite with walk-in closet and ensuite bathroom, plus 2 additional bedrooms and bathroom
- Laundry could easily be relocated to the 2nd level
- Finished basement provides additional living space, ample storage and laundry
- Steps from restaurants, coffee shop, and the Prairie Path. Feeds into highly sought-after District 205 schools









ELMHURST IS A VIBRANT COMMUNITY WITH A WEALTH OF SHOPS, RESTAURANTS, AND ARTS AND CULTURE.

Elmhurst's award-winning park district maintains nearly 30 parks as well as trails, playgrounds, and athletic facilities. At the center of town is Wilder Park, where locals will also find the community's public library, Wilder Mansion, the Wilder Park Conservatory, and the Elmhurst Art Museum. The museum has been named the "Best Suburban Art Museum in Chicago" by *Chicago* magazine and is adjacent to the McCormick House, a rare single-family home designed by Mies van der Rohe.

Elmhurst is also home to the Elmhurst History Museum, Elmhurst Symphony Orchestra, GreenMan Theatre Troupe, Elmhurst Choral Union, and Elmhurst Children's Theatre.

In addition to its many cultural offerings, the city is known for its bustling shopping and dining scene. Elmhurst's City Centre boasts a movie theater, an assortment of eateries and boutiques, and community events such as the annual Rock the Block Party. The Elmhurst Express Trolley connects downtown Elmhurst with the community's other shopping areas, including the Spring Road and York & Vallette business districts. The Trolley is free and runs during the summer and holiday season.

Residents come together for dozens of community events that are held throughout the year. The Memorial Day Parade has taken place every year since its start in 1918 and the annual St. Patrick's Day Parade is the third largest in the Chicagoland area.

With its proximity to O'Hare International Airport, the Tri-State Tollway, and the Eisenhower Expressway, Elmhurst offers convenient transportation options. A Metra train station is also located in town, providing easy access to downtown Chicago.



2 EATON COURT 15



JILL GIORNO

(630) 220-7199

JGIORNO@ATPROPERTIES.COM