

2 ELMWOOD DRIVE

HAWTHORN WOODS





ROOM DIMENSIONS

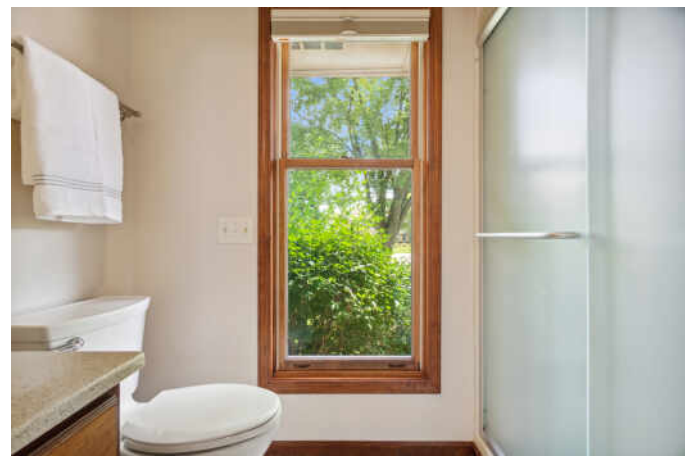
LIVING ROOM : 18' x 14'
FAMILY ROOM : 20' x 14'
DINING ROOM : 12' x 14'
KITCHEN : 18' x 14'
BREAKFAST NOOK : 7' x 11'
SUNROOM : 17' x 13'
PRIMARY BEDROOM : 24' x 17'
SECOND BEDROOM : 12' x 10'
THIRD BEDROOM : 12' x 13'
FOURTH BEDROOM : 12' x 14'

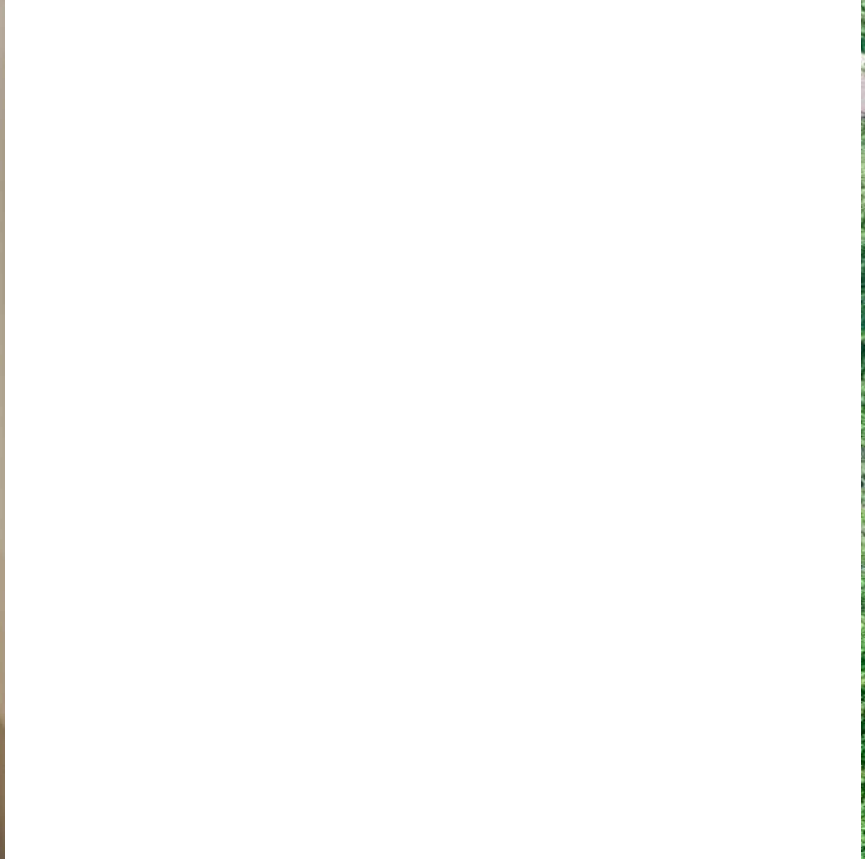
Beautiful ranch home on a private lot! very well maintained home with almost 1 acre of mature landscaping and beautiful views. Enter through a bright and sunny foyer to open layout. Spacious kitchen with large kitchen island and newer appliances overlook family room area with access to a gorgeous sunroom with heated floors and private deck area for all year round relaxing and entertaining. Large primary suite features vaulted ceilings, private patio and spacious private bathroom. All rooms are spacious with plenty of closet space! Unfinished basement is ready for your finishing touches. This is a special home in a great location close to schools, parks and recreation.





SIZES AND DIMENSIONS ARE APPROXIMATE, ACTUAL MAY VARY.







SANDRA FRAMPTON

(847) 207-7551

847-381-0300

SANDRAFRAMPTON@ATPROPERTIES.COM

WWW.SANDRAFRAMPTON.COM



Sandra Frampton

HONEST • OPEN • EXPERIENCED



CHRISTIE'S
INTERNATIONAL REAL ESTATE

2ELMWOOD.INFO