

## 2 VERMONT CIRCLE BOLINGBROOK







#### ROOM DIMENSIONS

LIVING ROOM : 21' × 13'

DINING ROOM : 14' × 10'

KITCHEN : 13' × 10'

FAMILY ROOM : 16' × 14'

PRIMARY BEDROOM : 14' × 13'

SECOND BEDROOM : 12' × 11'

THIRD BEDROOM : 10' × 10'

FOURTH BEDROOM : 11' × 10'

FOYER : 10' × 8'

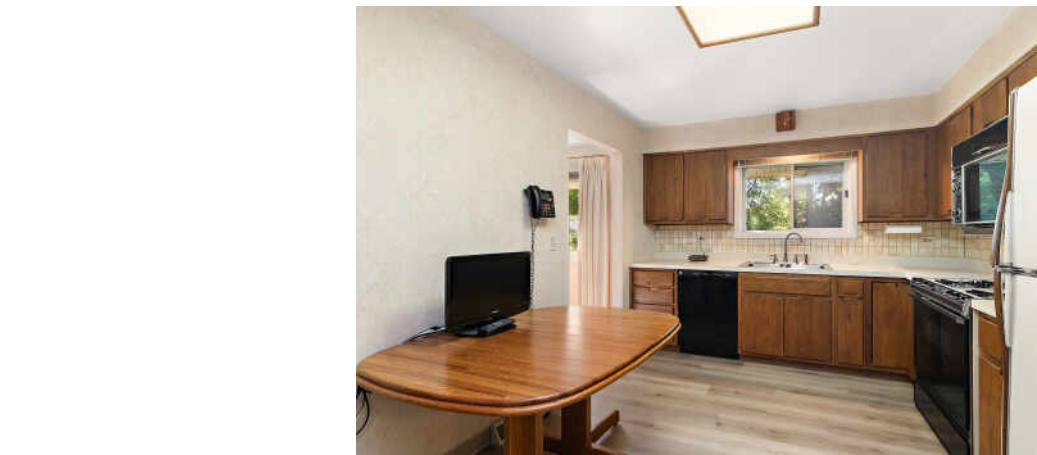
Step through the double door entry into a spacious foyer that sets the tone for this bright and welcoming split level home. Sunlight pours through the bay window in the living room, creating a cheerful space to relax or gather. The separate dining room is perfect for family meals and entertaining guests. The kitchen offers plenty of cabinet space for all your cooking essentials and has room for a table and chairs, making it a comfortable spot for casual dining. Just steps away, the cozy family room includes a dry bar and sliding glass doors leading to the beautiful backyard and paver patio - perfect for outdoor enjoyment. Completing the ground level, you'll find a versatile bedroom that can also be used as an office, along with a powder room and convenient laundry space. Upstairs, the primary bedroom features two closets and a private ensuite bathroom with a shower. Two additional bedrooms share a hall bathroom with a double-bowl vanity, tub, and linen closet. All bedroom closets are extra-large with floor-to-ceiling doors, offering plenty of storage space. The home also includes a spacious 2 1/2 car attached garage, providing ample room for vehicles and storage and a sealed crawl space. Additional highlights include new luxury vinyl plank flooring in the kitchen and family room (2025), a new garage entry door to the backyard (2025), and a new sump pump (2024). Lovingly cared for and well maintained, this home is the perfect blend of comfort, function, and charm - ready for you to move in and make it your own. Conveniently located near shopping, restaurants, and a park, it offers the ideal setting to enjoy everyday living and create lasting memories.

4 BEDROOM

2.1 BATH



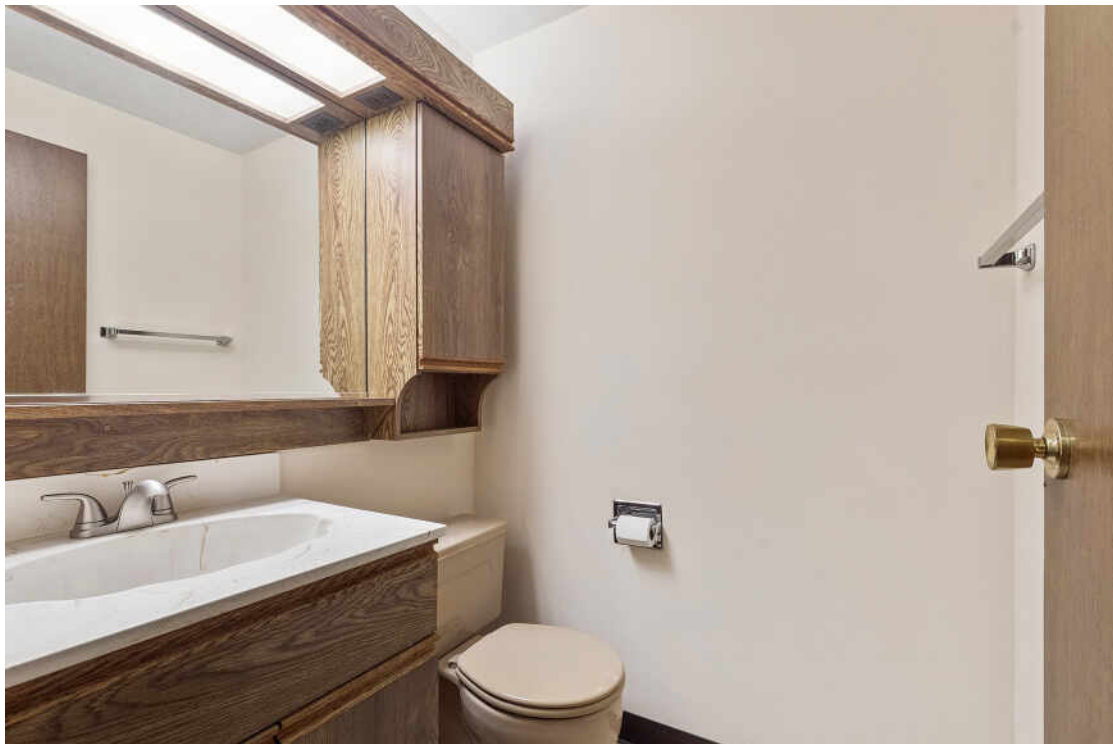
















THE SOUTHWEST SUBURB OF  
**BOLINGBROOK** IS THE STATE'S SECOND  
LARGEST VILLAGE.

Just 30 miles from Chicago, the village is home to a number of national corporate headquarters and business centers.

Residents enjoy top-notch public services, municipal and park district golf courses, and several golf clubs in neighboring communities.

Area parks offer trails and plenty of spots for picnicking or playing sports, and come summertime, Pelican Harbor Aquatic Park keeps guests cool with its indoor and outdoor attractions, including a lazy river, six waterslides, and a sand playground.

Bolingbrook boasts eclectic dining options. From quaint dining experiences to the local farmers market and food-infused festivals, there is truly something for everyone to enjoy.

I-55 runs through the southern part of the village, heading northeast to Chicago. Meanwhile, I-355 runs along the east side of Bolingbrook, and Illinois Route 53 runs north and south through the middle of the village.





## DEBBIE POKRZYWA

(708) 921-1820

DEBBIEPOKO@GMAIL.COM

DEBBIEPOKO.COM



All specifications, features, designs, price, assessments, taxes and materials are subject to change without notice. Depicted floor plans and architectural renderings are only an artist's impression.

