

3021 ENTERPRISE PARK AVENUE
SOUTH CHICAGO HEIGHTS





ROOM DIMENSIONS

LIVING ROOM : 20' x 11'

FAMILY ROOM : 17' x 14'

KITCHEN : 14' x 12'

PRIMARY BEDROOM : 13' x 11'

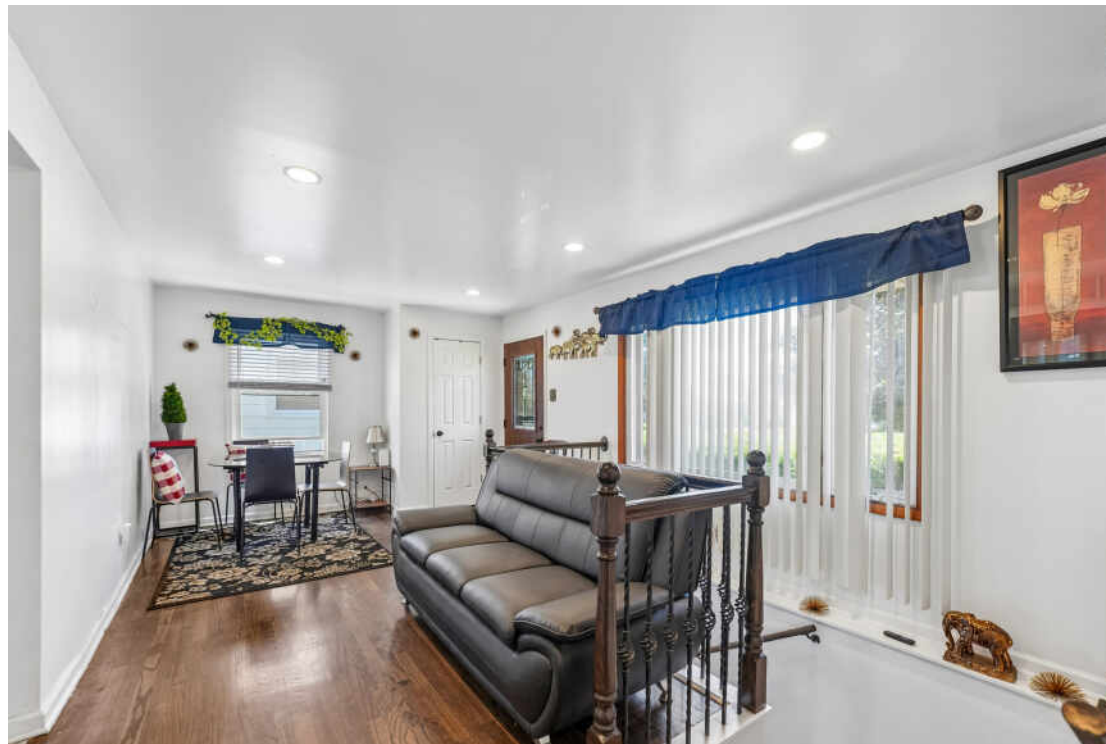
SECOND BEDROOM : 11' x 10'

THIRD BEDROOM : 11' x 9'

FOURTH BEDROOM : 11' x 11'

HOME SWEET HOME

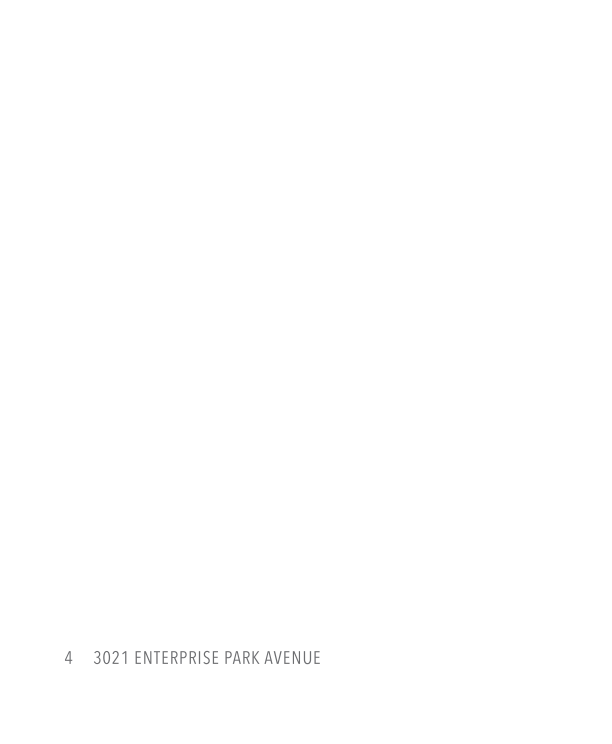
Beautifully maintained 4-bedroom, 2.5-bath home offering a versatile layout and excellent accessibility features. The main level features hardwood floors, spacious living areas, and plenty of natural light throughout. The finished basement adds significant living space with a large family room, a 4th bedroom, and two egress windows, one in the family room and one in the bedroom, providing added safety and flexibility. A standout feature is the handicap-accessible bathroom with a roll-in shower, making the home ideal for multigenerational living or those seeking enhanced accessibility. Outside, enjoy the spacious backyard and deck, perfect for relaxing or entertaining. The detached garage has been finished on the interior and is heated and air-conditioned, creating the perfect space for a home office, studio, workshop, gym, or hobby room. Conveniently located near shopping, dining, parks, and transportation, this move-in ready home offers comfort, functionality, and endless possibilities.



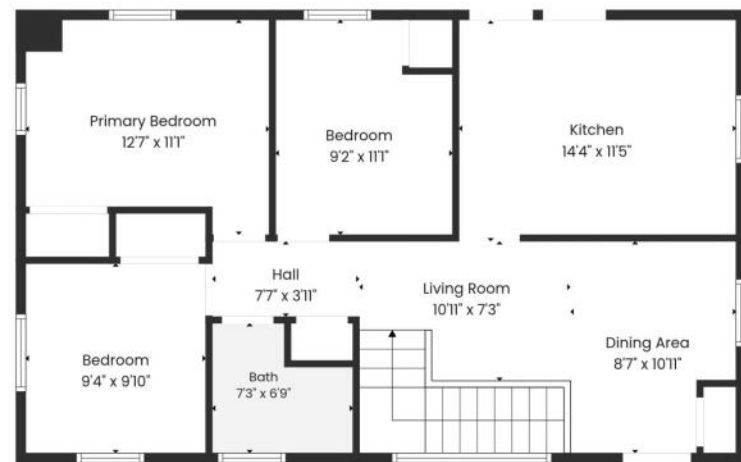
4 BEDROOM

2.5 BATH

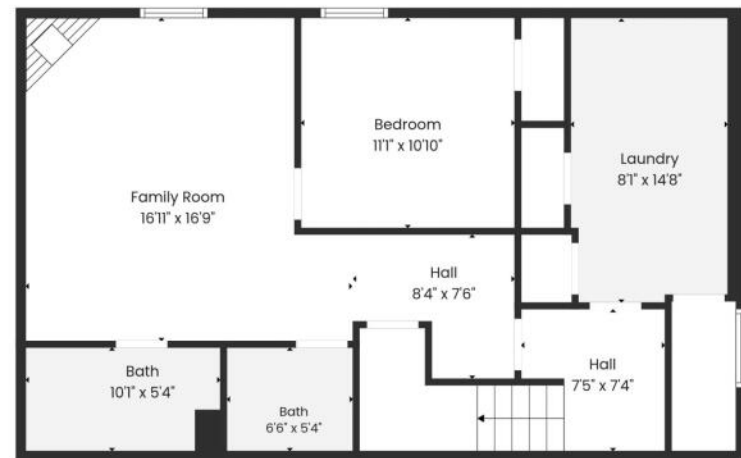
TAXES: \$2,070





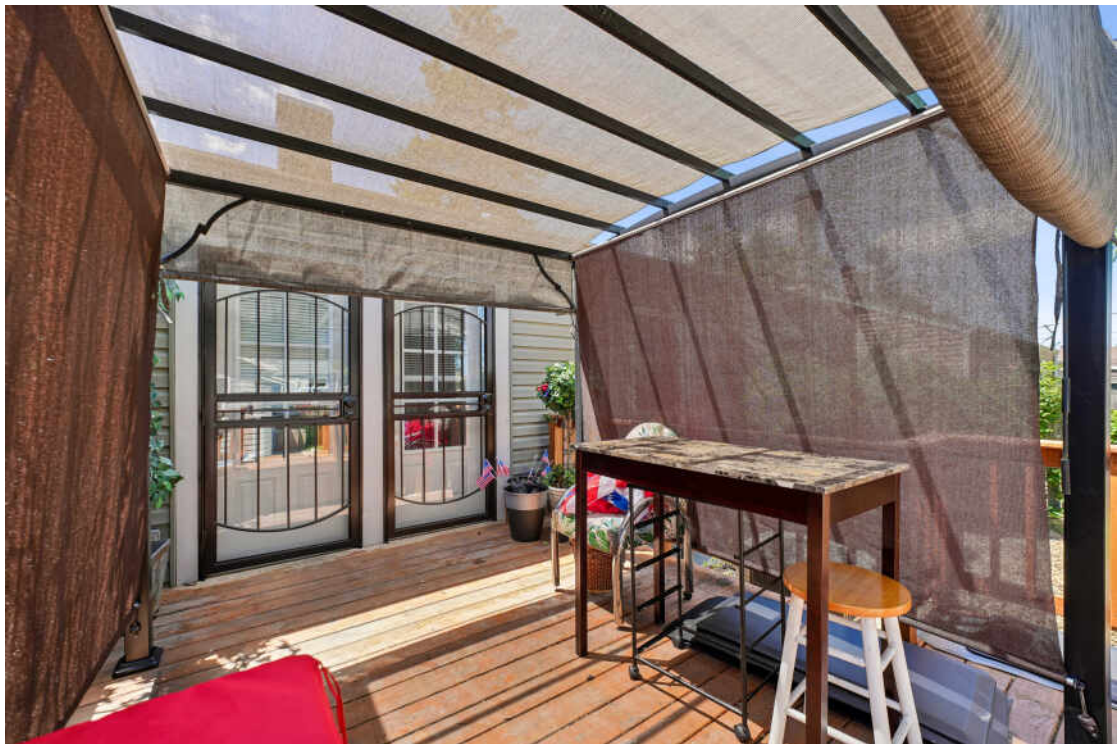


2nd Floor



1st Floor

Measurements Deemed Highly Reliable But Not Guaranteed.





BRIAN DURKIN

IL & IN LICENSED

708.296.4444

BRIAN@BRIANDURKINTEAM.COM

BRIANDURKINTEAM.COM

