

3024 W ARMITAGE AVENUE #7  
LOGAN SQUARE





#### ROOM DIMENSIONS

LIVING ROOM : 24' × 16'

KITCHEN : 10' × 16'

PRIMARY BEDROOM : 17' × 12'

2ND BEDROOM : 11' × 11'

3RD BEDROOM : 11' × 10'

FRONT BALCONY : 15' × 6'

BACK BALCONY : 12' × 6'

**3 BEDROOM**

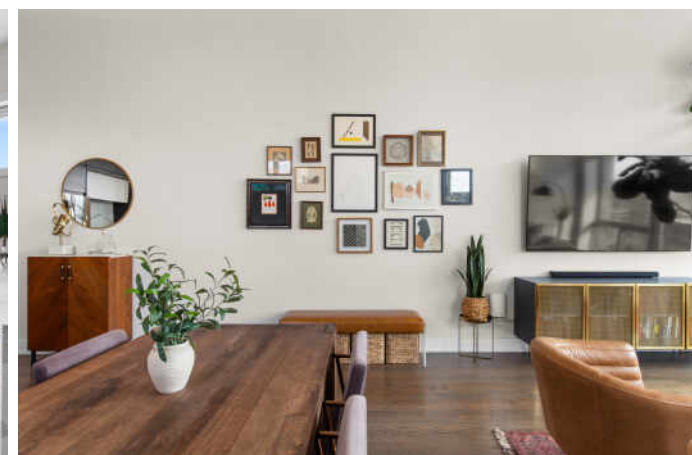
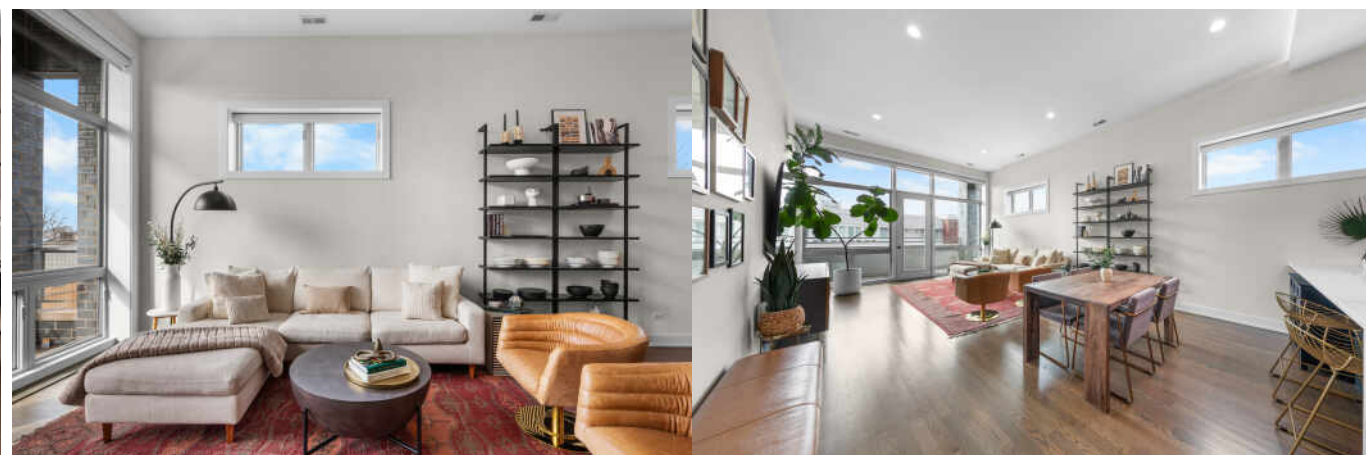
**2.1 BATH**

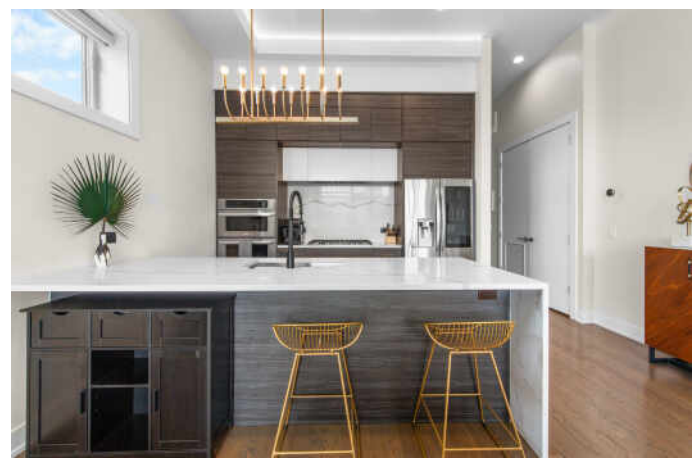
**TAXES: \$12,497**

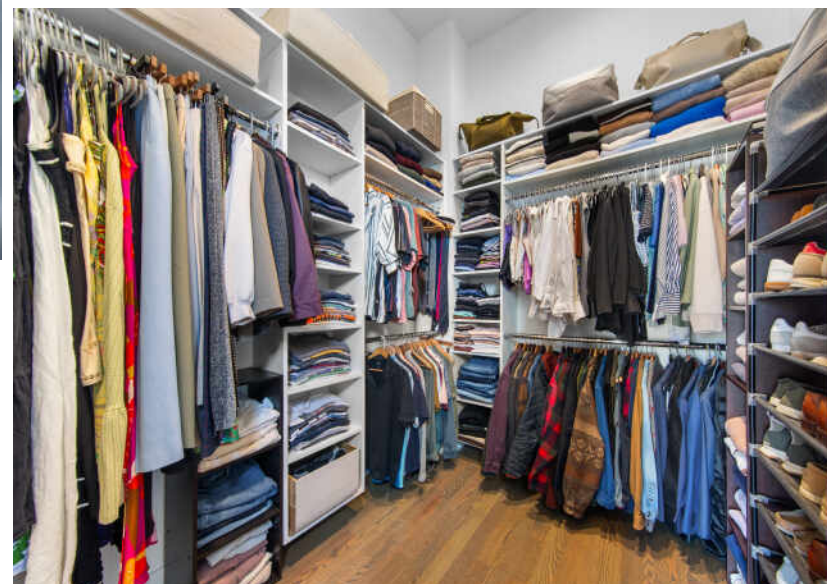
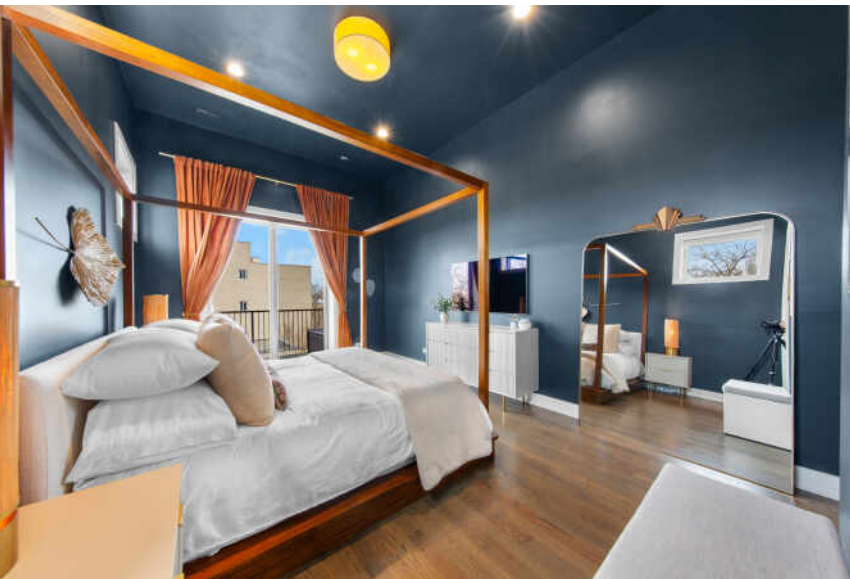
**ASSESSMENTS: \$445**

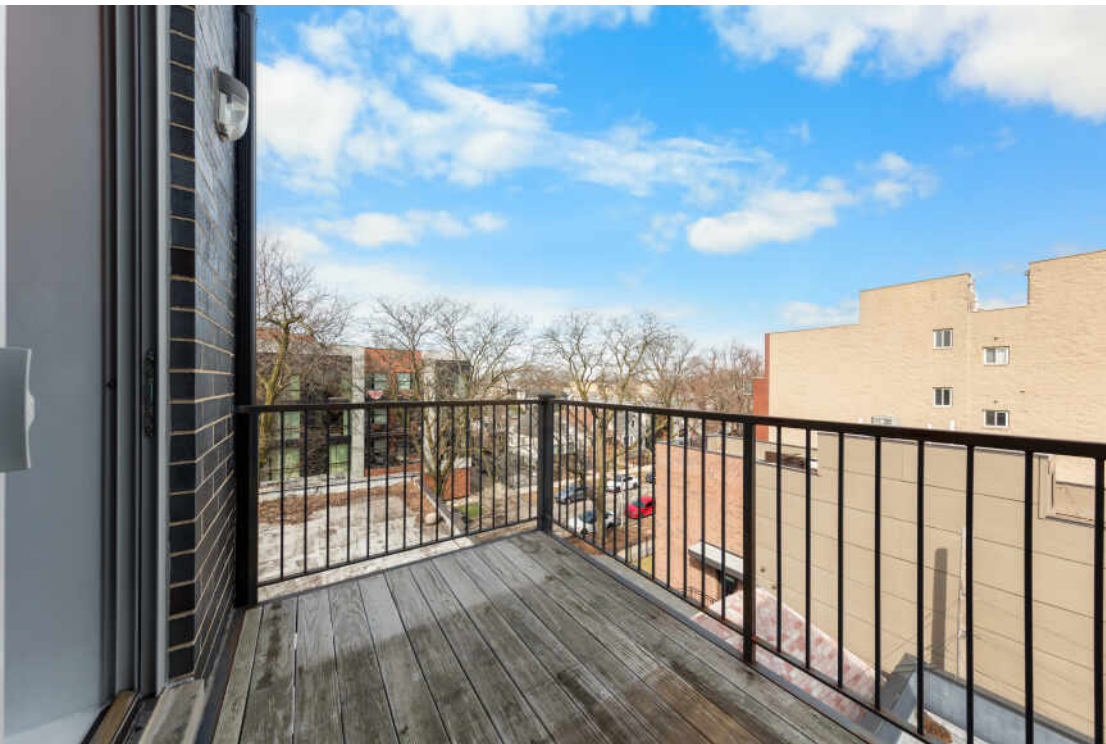
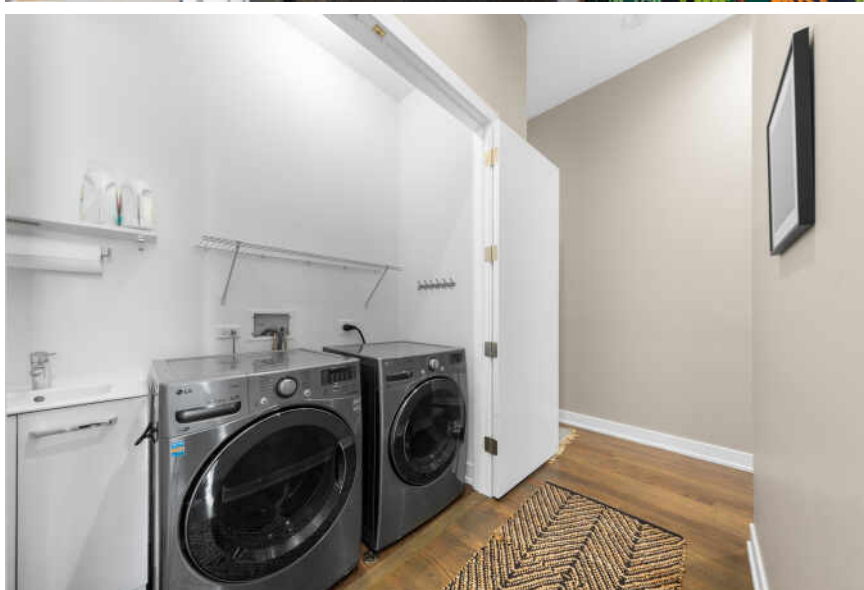
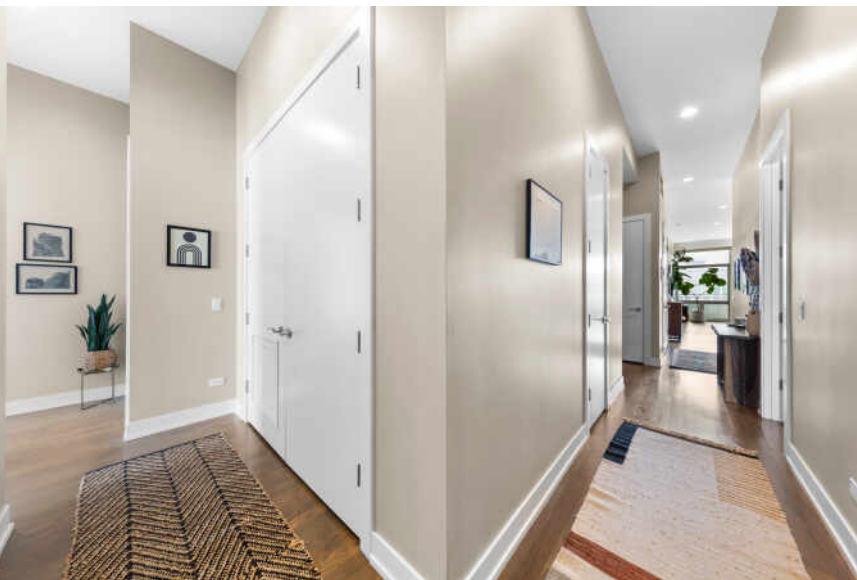
## EXCEPTIONAL PENTHOUSE RESIDENCE, OFFERING 3 BEDROOMS AND 2.1 BATHS IN AN INTIMATE BOUTIQUE ELEVATOR BUILDING IN THE HEART OF LOGAN SQUARE

This extra-wide, thoughtfully designed home showcases soaring 12+foot ceilings, floor-to-ceiling windows, rich hardwood floors, and custom paint, all complemented by high-end light fixtures that add a sophisticated, curated feel throughout. The expansive, south-facing open-concept living and dining areas are filled with natural light and extend seamlessly to a generous front balcony-perfect for grilling or entertaining. The chef's kitchen is both functional and striking, featuring sleek modern cabinetry, quartz countertops and backsplash, stainless steel appliances, and a large island designed for gathering. The primary suite offers a true retreat, complete with a walk-in closet and a spa-inspired ensuite featuring heated floors, dual vanities, an oversized walk-in shower, and a filtered shower system for an elevated daily experience. A private rear terrace, accessible from both the primary suite and the hallway, adds an additional layer of convenience and outdoor enjoyment. Two additional bedrooms are generously sized and feature custom closet organization. A stylish powder room stands out with designer wallpaper, adding a bold and refined touch. Additional conveniences include side-by-side in-unit laundry, excellent storage, automated luxury shades, and premium finishes throughout. Residents also enjoy access to a shared rooftop deck with sweeping skyline views. The home includes two heated, attached garage parking spaces and a dedicated storage unit. Perfectly positioned just steps from Logan Square's renowned dining and nightlife, nearby favorites include Giant, Gretel, Scofflaw, Moonlighter, Parsons Chicken & Fish, Middle Brow Bungalow, Osteria Langhe, and Solemn Oath Brewery. Enjoy easy access to green space with Palmer Square Park, the 606 Trail and blue line just moments away.











## LOGAN SQUARE PROVES THAT IT IS HIP TO BE SQUARE AFTER ALL.

The neighborhood attracts residents with its artistic vibe, park-like boulevards, and thriving dining scene.

The Logan Square Boulevards District, lined with beautiful homes and mature trees, is a designated Chicago landmark.

Although it's surrounded by some of Chicago's trendiest areas for nightlife, the neighborhood definitely holds its own. Logan Square is home to locally-owned restaurants, bars, and bistros, including hotspots noted by *Bon Appétit* as among Chicago's best. Artists and musicians live and work in the neighborhood, performing and displaying their art at local coffee shops, cafes, and theaters.

Known for its historic greystones, large bungalows, and stately mansions, Logan Square has seen a boom of residential development, including condominiums, lofts, townhomes, three-flats, and single-family homes. While there is ample new construction, the community still retains its historic charm by repurposing and preserving its landmarks.

The neighborhood's easy access to the CTA Blue Line is another draw for residents along with The 606 trail.





## GWEN STARK

(773) 983-4388

#1 INDIVIDUAL AGENT - GOOSE ISLAND 2018, TOP PRODUCER, SENIOR BROKER

OVER \$250 MILLION IN SALES

GWEN@ATPROPERTIES.COM



GWEN STARK  
— RESIDENTIAL —

@properties®

CHRISTIE'S  
INTERNATIONAL REAL ESTATE