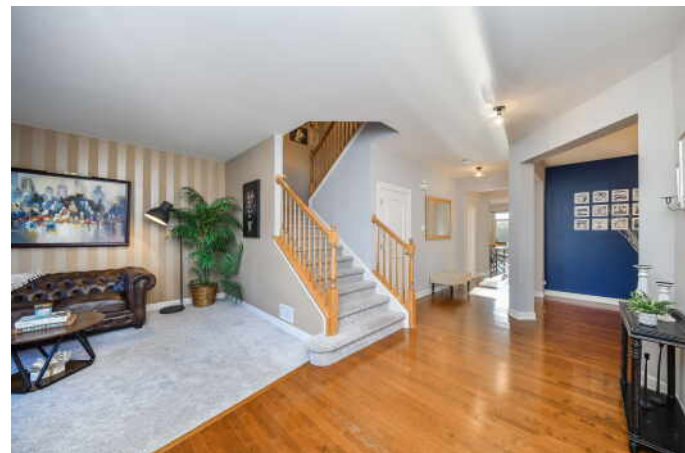


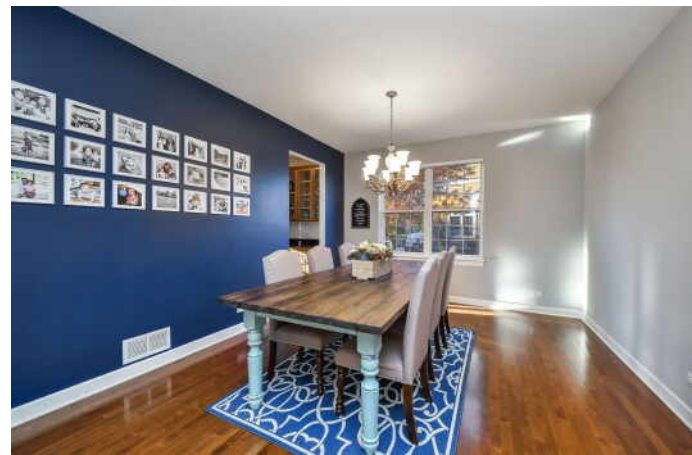
3025 LONG COMMON PARKWAY
ELGIN

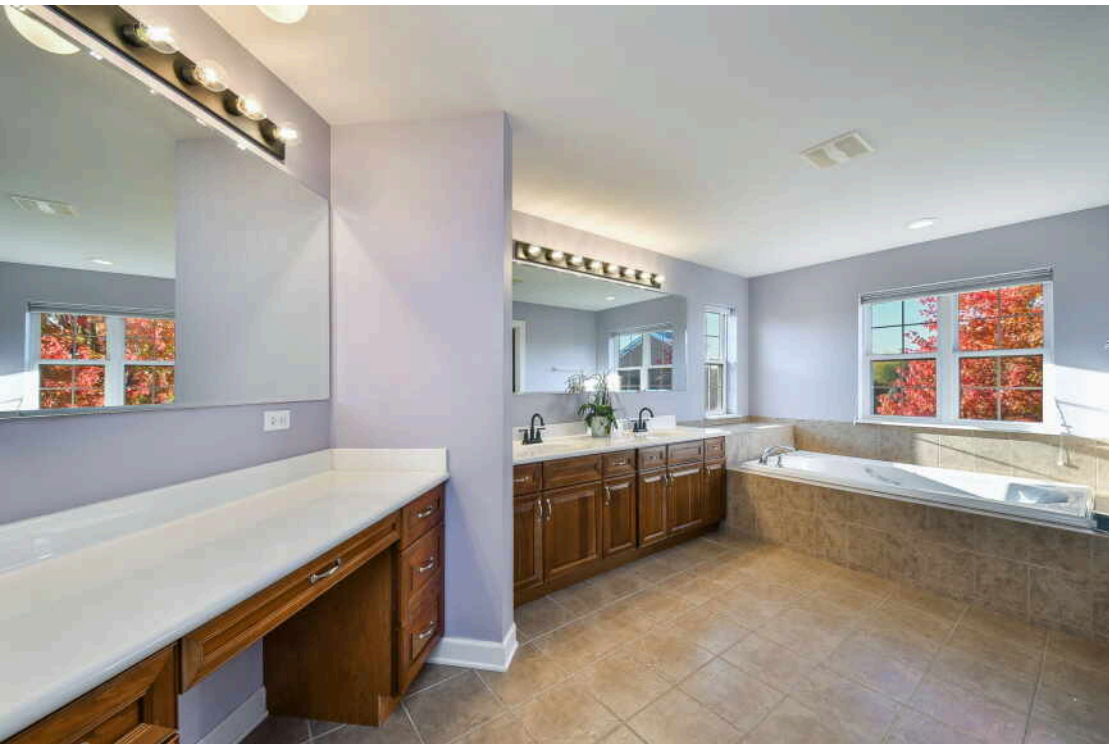
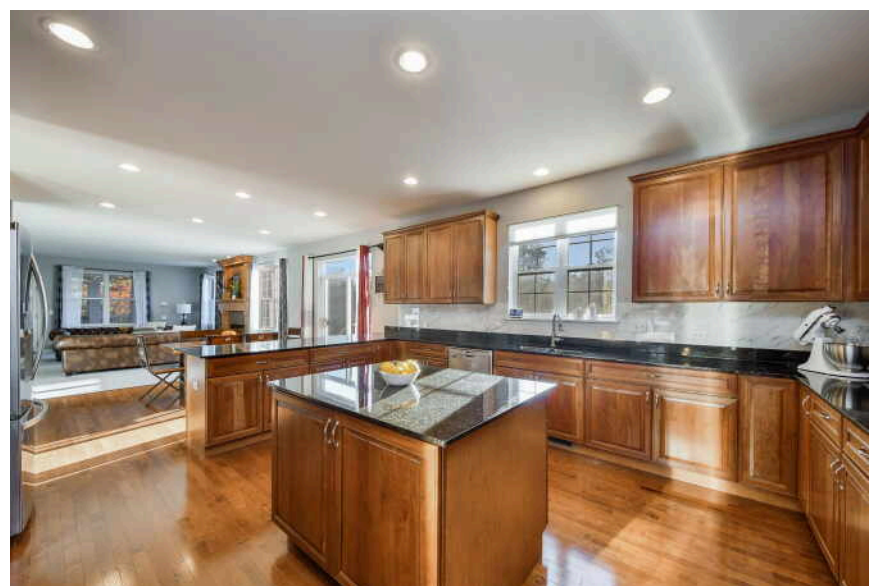


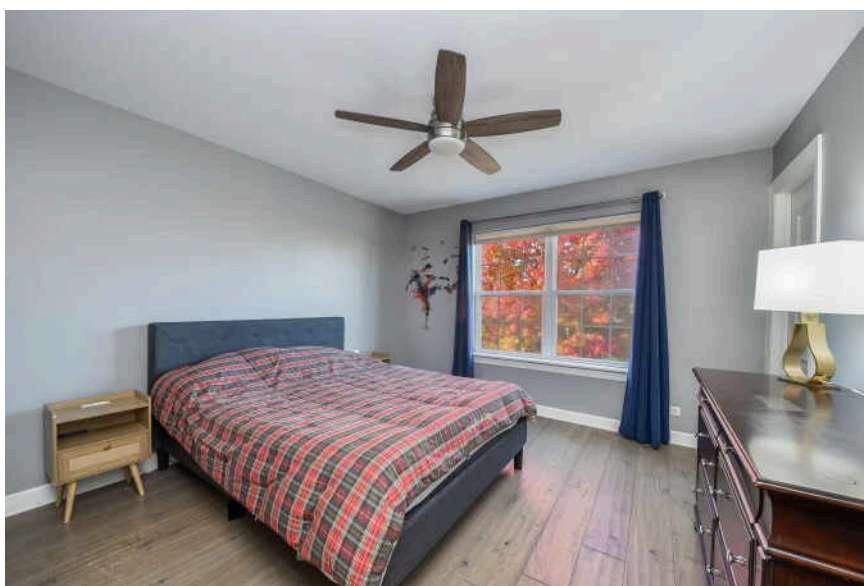


4 BEDROOM
2.1 BATH

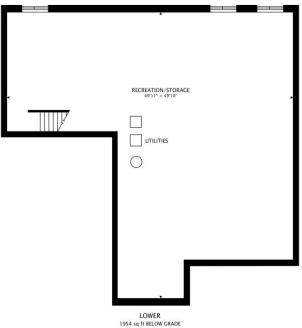
Welcome to 3025 Long Common Parkway, Elgin, Illinois - a stunning residence in the sought-after Providence Subdivision, set on more than half an acre within the highly rated District 301 schools. Designed for both sophistication and comfort, this home offers over 4,100 square feet of beautifully finished living space. Step onto the inviting covered front porch and into a bright, open interior featuring formal living and dining rooms-ideal for entertaining-and a private main-floor office with French doors for quiet work-from-home days. At the heart of the home is a chef's dream kitchen, showcasing 42" cabinetry, granite countertops, stainless steel appliances, double ovens, a spacious island, and breakfast bar seating. Additional features include a homework desk, a massive walk-in pantry, and a convenient butler's pantry that connects to the dining area. The kitchen opens seamlessly to the family room, where a gas fireplace, expansive windows, and breathtaking backyard views create a warm and inviting atmosphere. From here, step into the screened-in porch-the perfect spot for morning coffee or peaceful evening relaxation. Out back, you'll find a true outdoor oasis with a brick paver patio, built-in fire pit, and spacious deck, ideal for hosting gatherings or simply unwinding in the private, park-like setting. Upstairs, the luxurious primary suite offers a sitting area, dual walk-in closets, and a spa-inspired bath complete with a jacuzzi tub, separate shower, and dual vanities. All secondary bedrooms are generously sized, each with its own walk-in closet-one even features a private balcony overlooking sunset views. The second-floor loft provides incredible flexibility, perfect as a playroom, fitness area, or second office, and the entire level features rich hardwood flooring throughout. Additional highlights include a main-level laundry room with sink and cabinetry, a 3-car garage, and a full unfinished basement with rough-in plumbing for a future bathroom. The home has been freshly painted inside and out and is conveniently located near Route 20 and I-90, offering easy access to shopping, dining, and entertainment. To top it off, the school bus stops right in front of the home, adding everyday convenience for families. 3025 Long Common Parkway beautifully combines elegance, function, and modern comfort-a perfect place to call home.

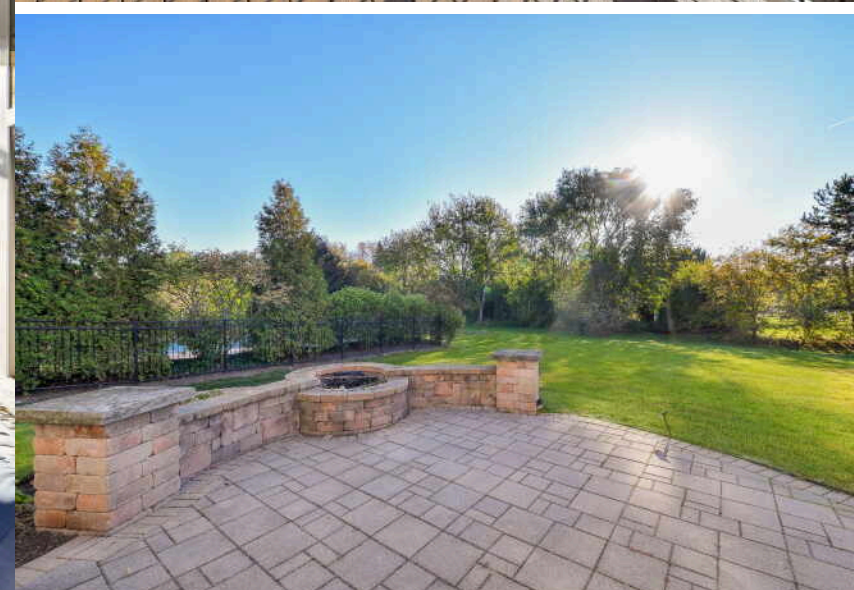
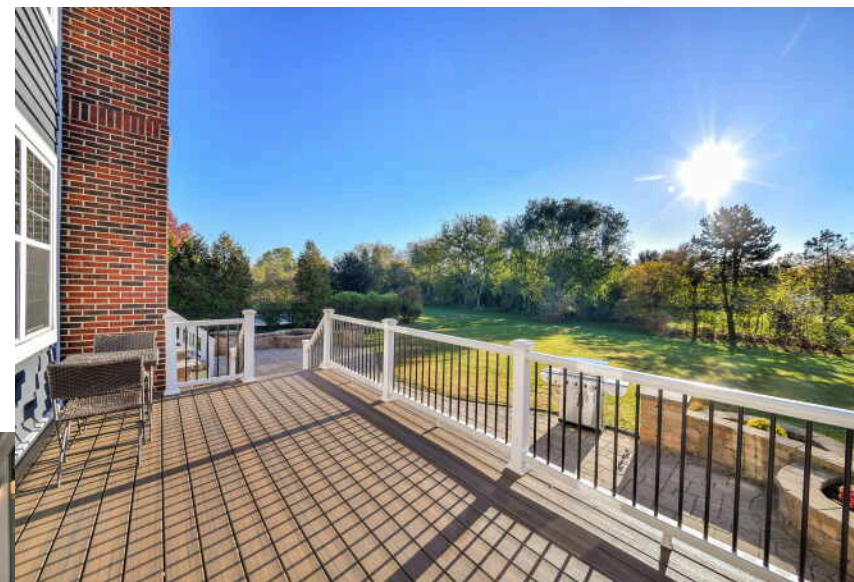














RUTA BARAN

630-862-7058

RUTABARAN@ATPROPERTIES.COM



All specifications, features, designs, price, assessments, taxes and materials are subject to change without notice. Depicted floor plans and architectural renderings are only an artist's impression.

