

30300 N EAST END AVENUE
LIBERTYVILLE

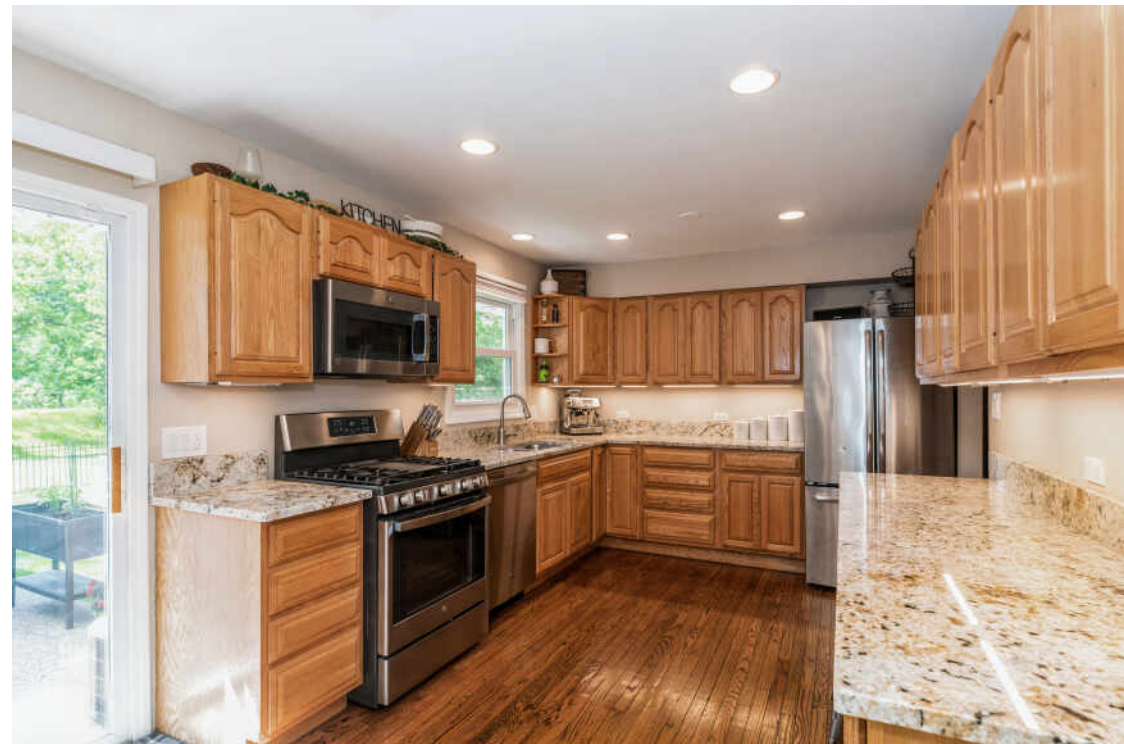


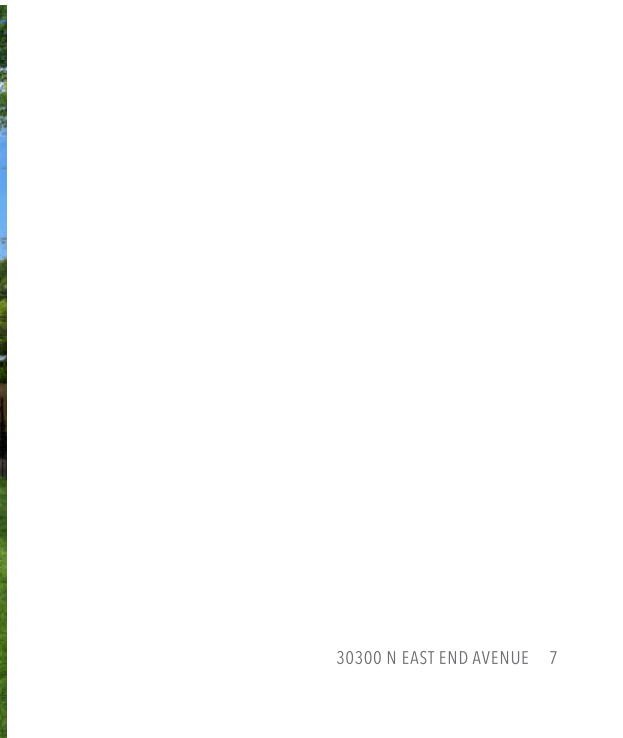
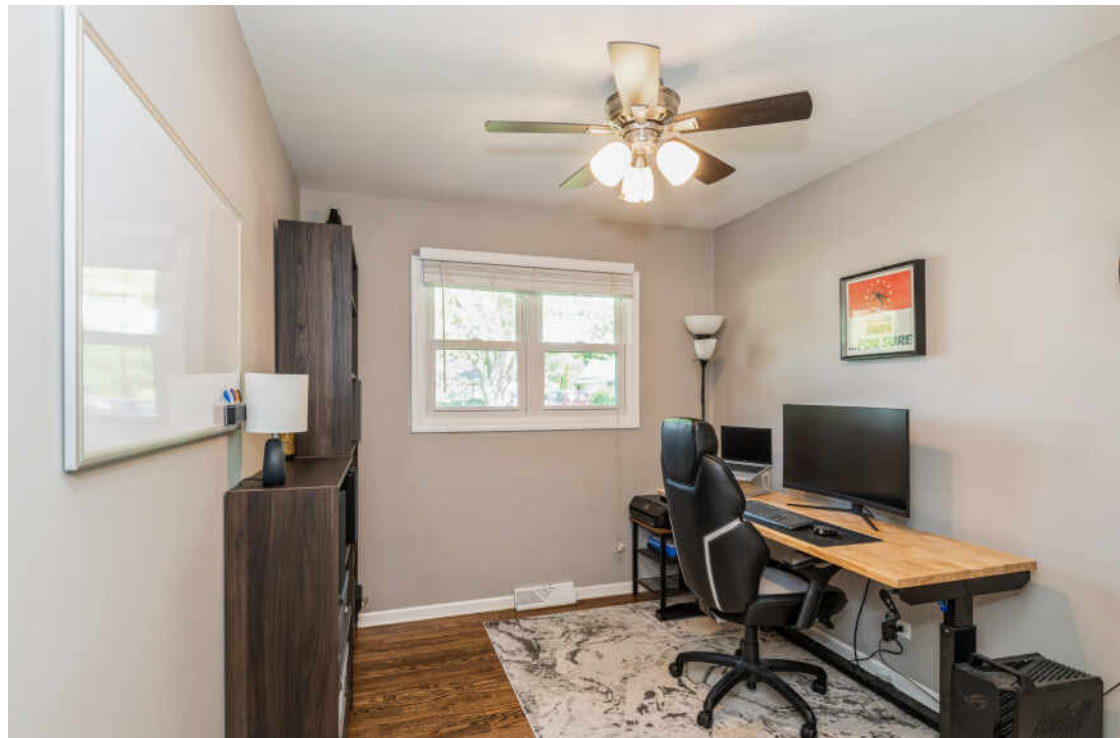
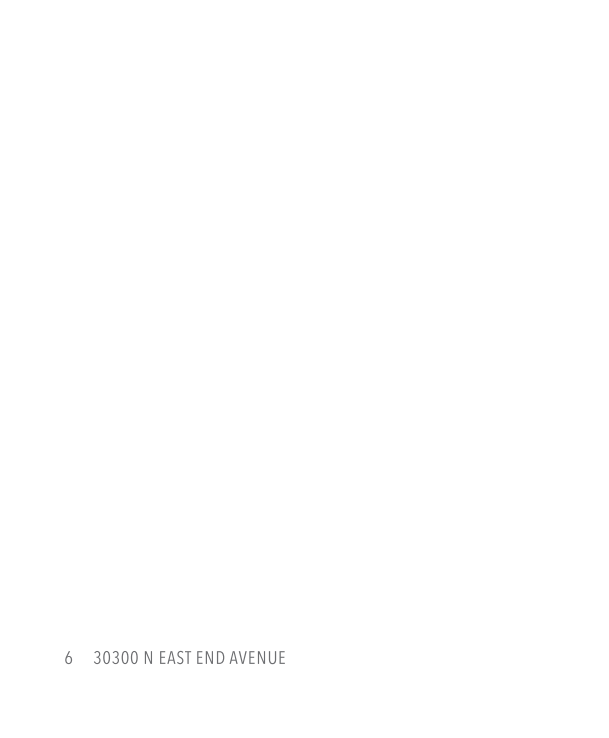


3 BEDROOM
1 BATH

LOOKING FOR EASY, ONE-LEVEL LIVING IN LIBERTYVILLE? THIS BEAUTIFULLY UPDATED 3-BEDROOM, 1-BATH RANCH IS THE ONE YOU'VE BEEN WAITING FOR!

- From the moment you arrive, you'll appreciate the care and attention put into every detail of this home-set on a spacious lot with an oversized 2-car garage and a fantastic backyard retreat.
- Step into the updated kitchen, featuring granite countertops, under-cabinet lighting, recessed lighting, and a full suite of stainless steel GE appliances (refrigerator, oven/range, dishwasher, microwave)-all NEW in 2020.
- The stylish bathroom includes a new vanity and toilet, also updated in 2020.
- The large living room welcomes you with refinished hardwood floors and fresh paint throughout, offering a bright and inviting space for relaxing or entertaining.
- A convenient laundry area includes front-load washer and dryer.
- Enjoy outdoor living with a huge, partially fenced backyard and a covered patio-perfect for sipping your morning coffee or hosting bonfires with friends.
- Additional highlights include: NEW furnace and A/C (2023), NEW roof, siding, chimney, soffits, fascia, gutters, storm door, aluminum-wrapped doors and windows for low maintenance and electrical service (2020) and NEW windows (2018).
- Ideally located near award-winning Libertyville schools, scenic Independence Grove, Metra station, expressways, and all the shopping, dining, and charm of downtown Libertyville.







LIBERTYVILLE OWES MUCH OF ITS EARLY GROWTH TO THE RAILROAD.

A spur on the Milwaukee Road train line brought rapid growth to the area, which was incorporated in 1882.

Today the Metra rail system provides a convenient commute for residents of this vibrant community.

Libertyville's bustling downtown district received a Great American Main Street Award by the National Trust for Historic Preservation. The downtown was rebuilt after a fire in 1895 destroyed most of the buildings; they were rebuilt with mandated brick reconstruction, giving them a singular style.

The downtown area includes bakeries, gourmet coffee vendors, and a microbrewery. In spring and summer months, residents enjoy a farmers market that has been operating for more than three decades.

In addition to a variety of restaurants, there are upscale boutiques, antique shops, and gift stores along Milwaukee Avenue.

Residents have eight miles of bike paths and numerous parks to enjoy along with the annual Libertyville Days Festival, an outdoor concert series, and other community events.

Three Metra stations and the Tri-State Tollway make for a convenient commute to downtown Chicago, O'Hare International Airport, and suburban corporate headquarters.



NOTES

[illegible]



JULIE PAWL

(847) 845-9348

JPAWL@ATPROPERTIES.COM

WWW.JULIEPAWL.COM



All specifications, features, designs, price, assessments, taxes and materials are subject to change without notice. Depicted floor plans and architectural renderings are only an artist's impression.

