

**3030 ARBOR LANE #203**  
NORTHFIELD







ROOM DIMENSIONS

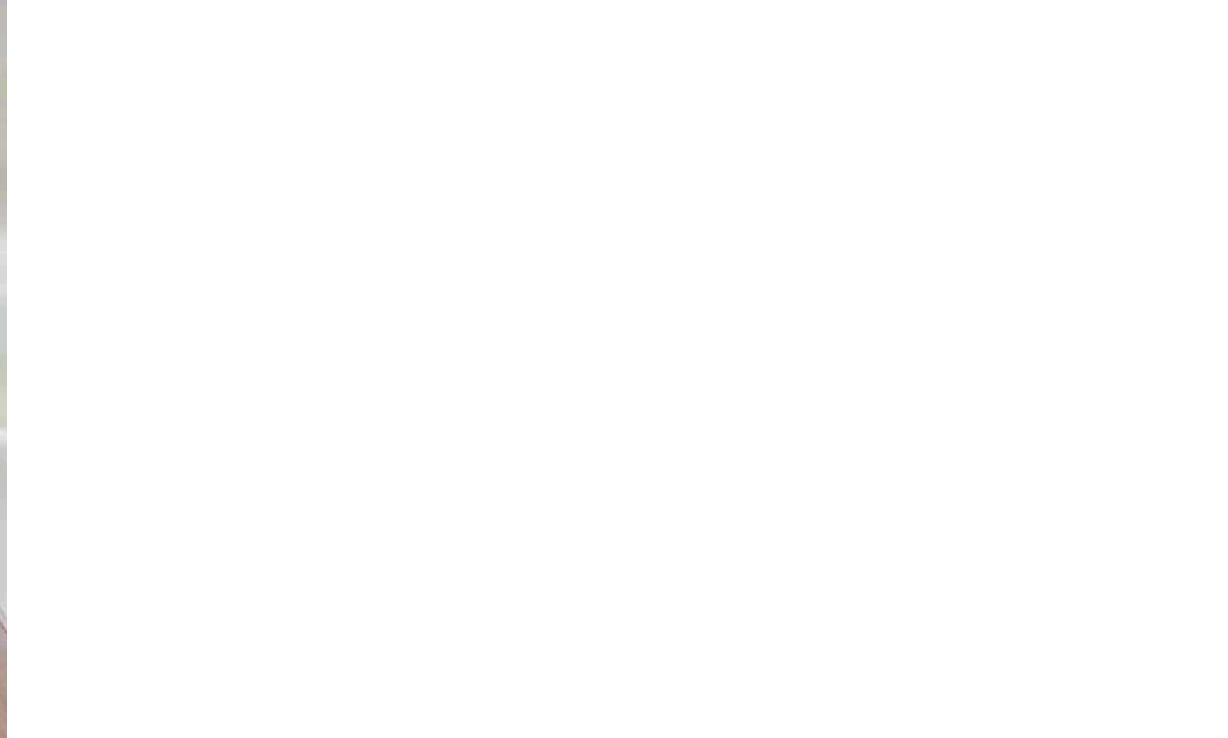
- FOYER : 5' × 9'
- LIVING/DINING ROOM : 13' × 20'
- KITCHEN : 11' × 9'
- PRIMARY BEDROOM : 10' × 15'
- 2ND BEDROOM : 8' × 14'

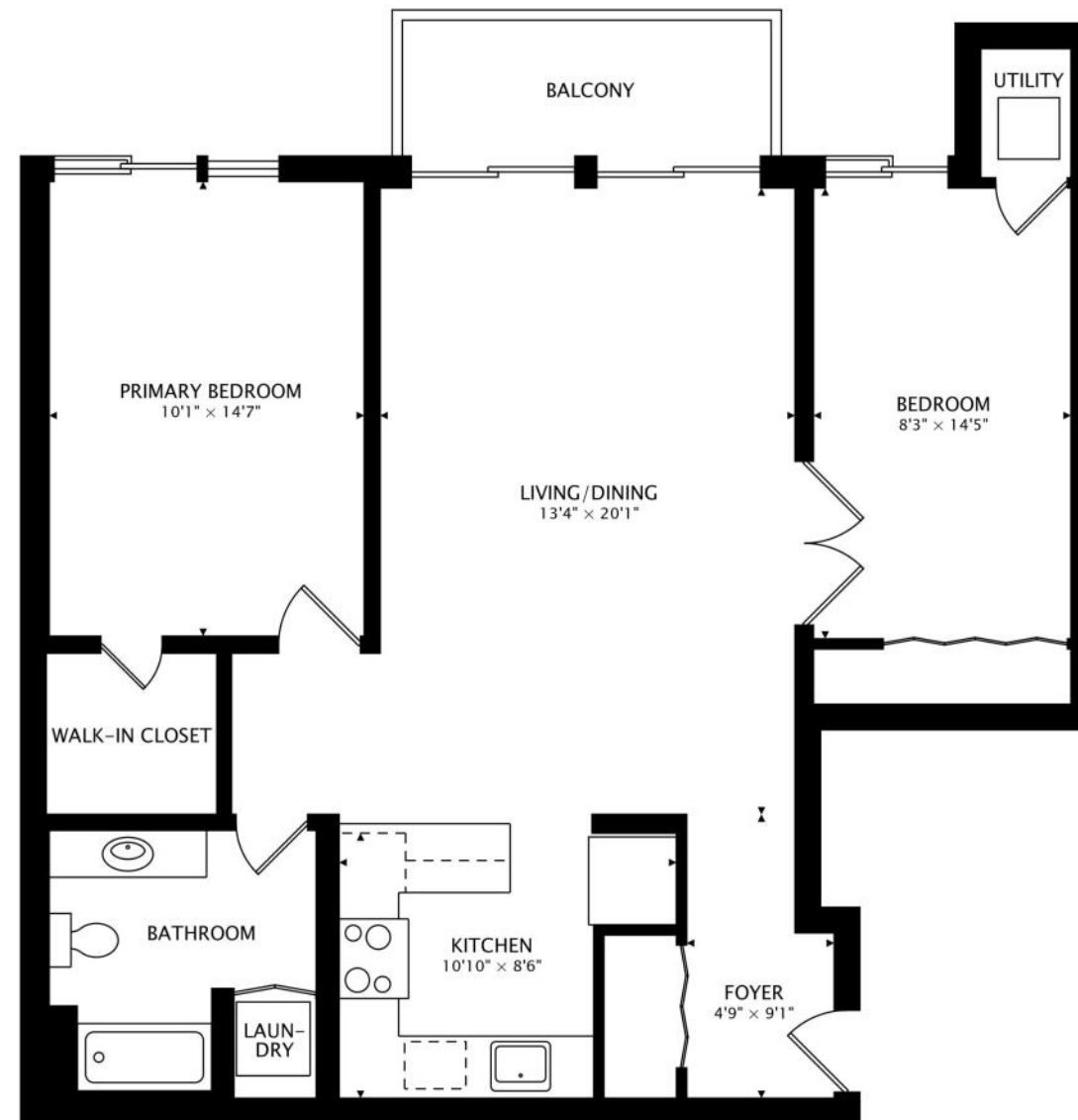
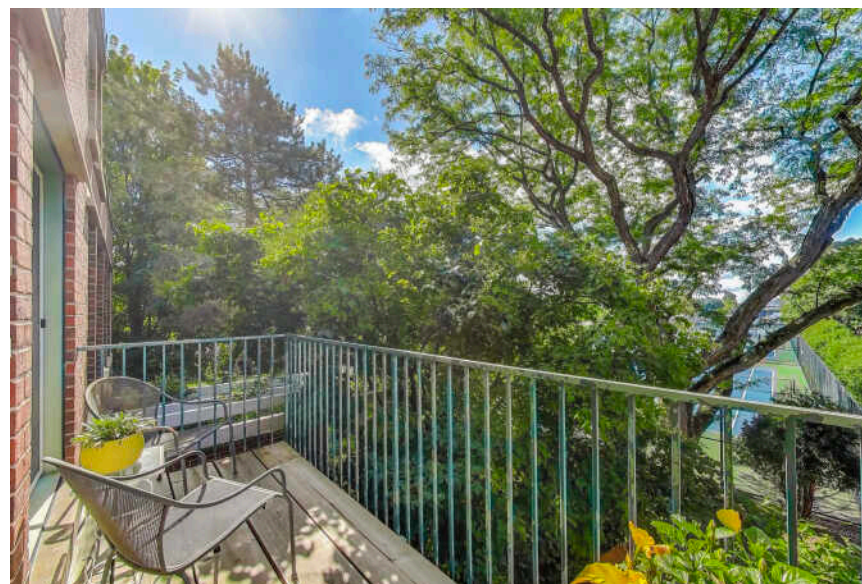
2 BEDROOM  
1 BATH  
TAXES: \$3,258  
ASSESSMENTS: \$428.45/MONTH

SPACIOUS MEADOWLAKE CONDO

Bright and spacious 2-bedroom condo in desirable Meadowlake, offering picturesque views of the pond. The open-concept living and dining area features floor-to-ceiling windows that fill the space with natural light and lead to a private balcony with serene water views. The kitchen includes a cozy eat-in area along with a newer stove and refrigerator. The primary suite offers a generous walk-in closet, while the second bedroom is perfect for a guest room, home office, or den. Additional highlights include in-unit laundry and one space in the heated indoor garage with extra storage. Enjoy resort-style amenities including a clubhouse, party room, indoor pool, spa, patio, and fitness center. Conveniently located near shops, restaurants, Mariano's, bike trails, and expressway access-plus award-winning schools. Maintenance-free living at its best. Please note: no dogs and no rentals allowed.







947 sq ft + 52 sq ft BALCONY





**NORTHFIELD IS A COMMUNITY WITH  
ENDURING CHARM AND TRANQUILITY.**

Known for its distinctly residential character and small-town vibe, Northfield is defined by sprawling ranch homes with spacious yards, European-inspired mansions on oversized lots, and condominiums in quiet locales. While the community has experienced growth through new construction, its welcoming atmosphere still remains.

Convenient access to I-94 and I-294 make for an easy drive to the city and O'Hare International Airport. Meanwhile, neighboring towns such as Winnetka and Glenview have Metra stations providing train service to downtown Chicago.

In addition to nationally acclaimed New Trier High School, Northfield offers residents proximity to corporate headquarters as well as an abundance of shops, restaurants, parks, and forest preserves.







## VIRGINIA TRUX

(847) 997-2042

TRUX@ATPROPERTIES.COM

WWW.TEAMTRUX.COM



CHRISTIE'S  
INTERNATIONAL REAL ESTATE

All specifications, features, designs, price, assessments, taxes and materials are subject to change without notice. Depicted floor plans and architectural renderings are only an artist's impression.

