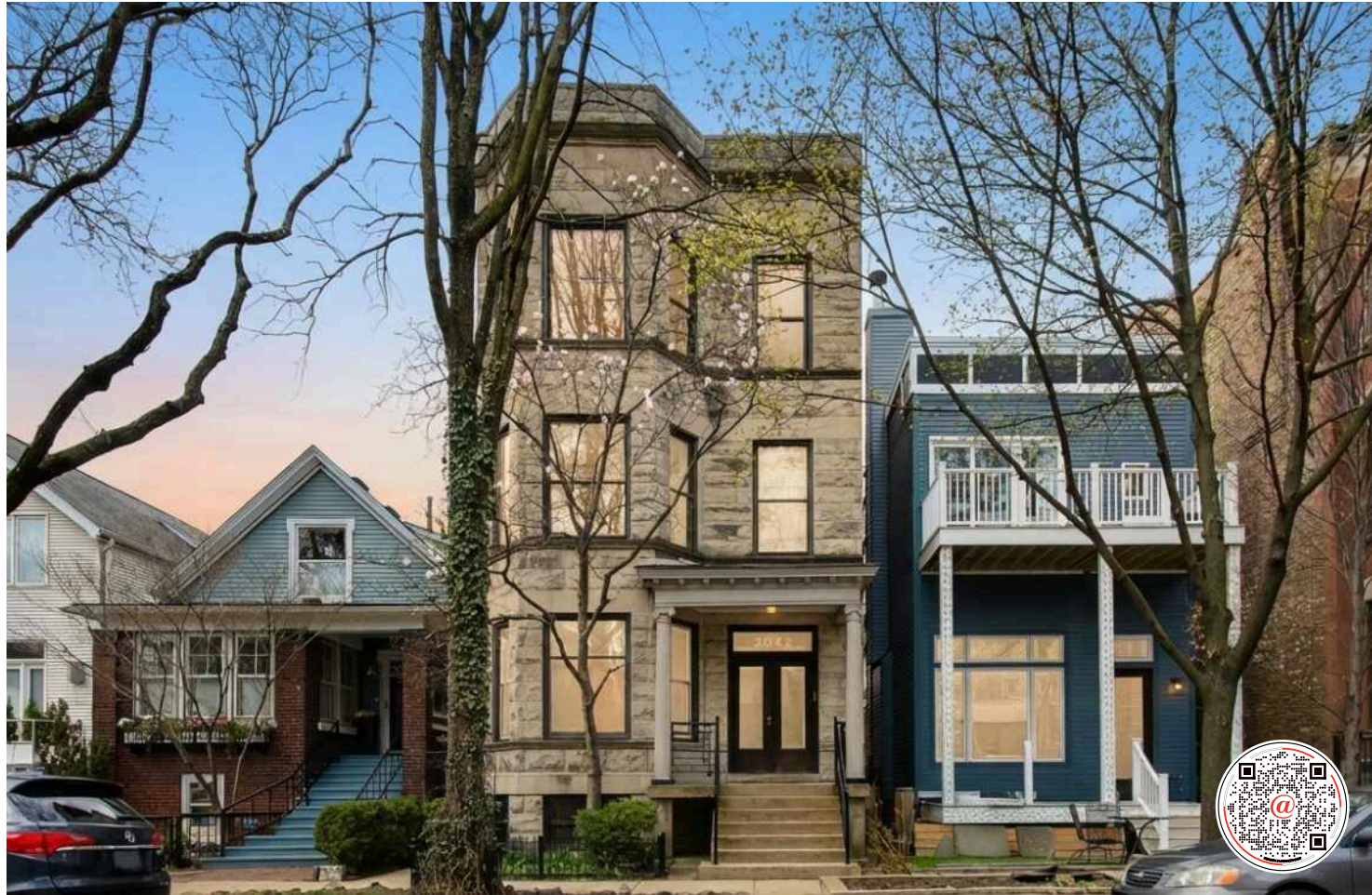
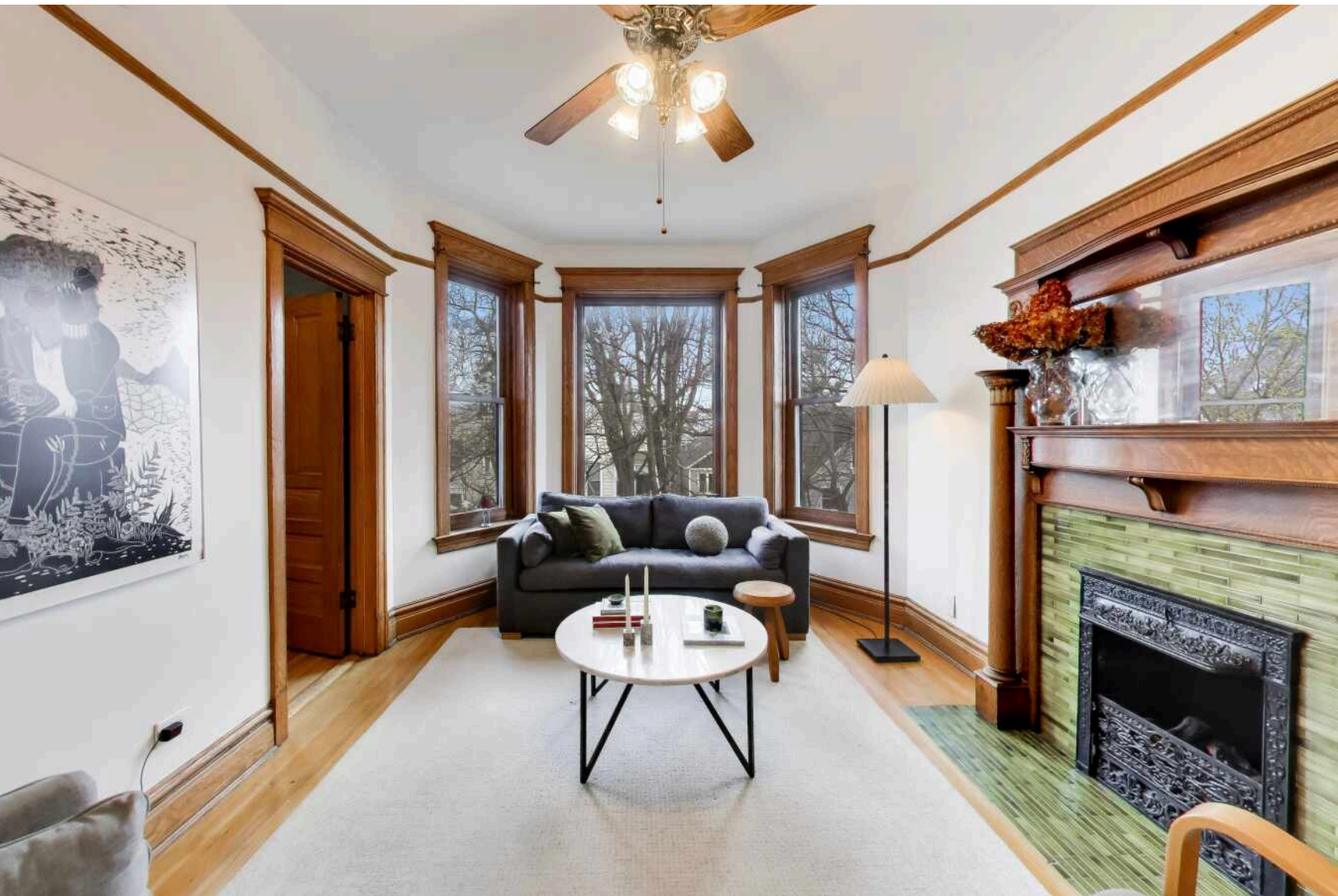


3042 N CLIFTON AVENUE #3
LAKEVIEW





ROOM DIMENSIONS

LIVING ROOM : 15' × 11'

DINING ROOM : 14' × 13'

KITCHEN : 13' × 11'

BEDROOM : 13' × 11'

BEDROOM : 10' × 8'

FOYER : 7' × 6'

DECK : 13' × 10'

ROOF DECK : 24' × 11'

2 BEDROOM

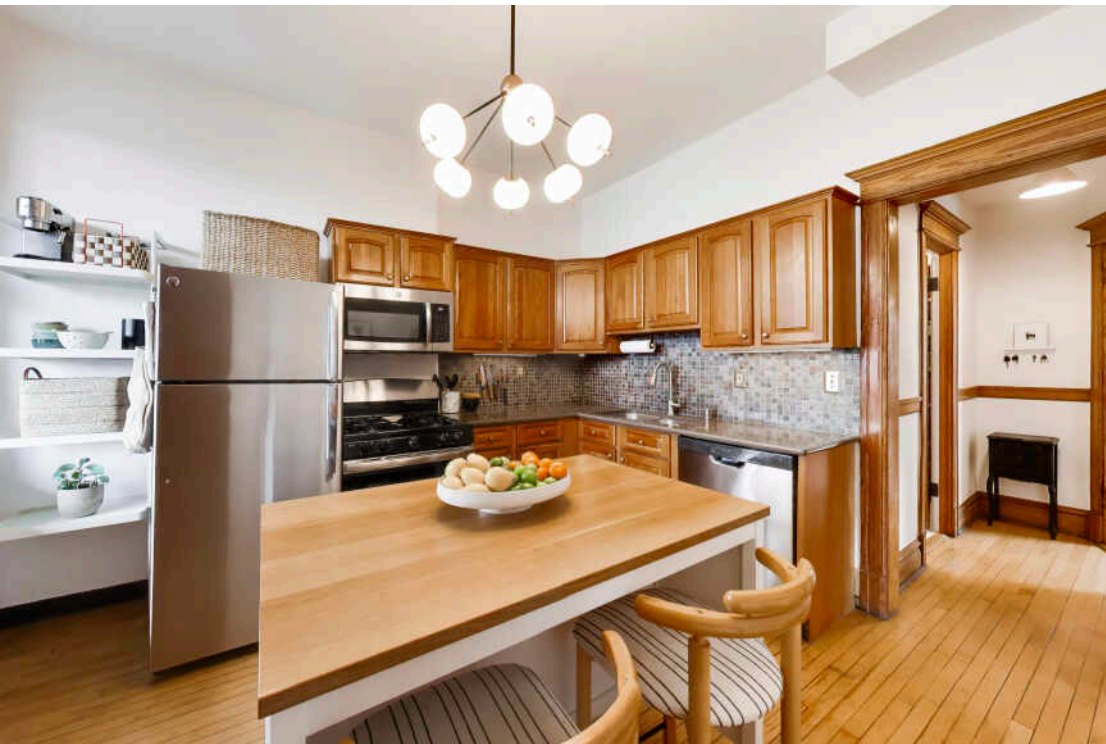
1 BATH

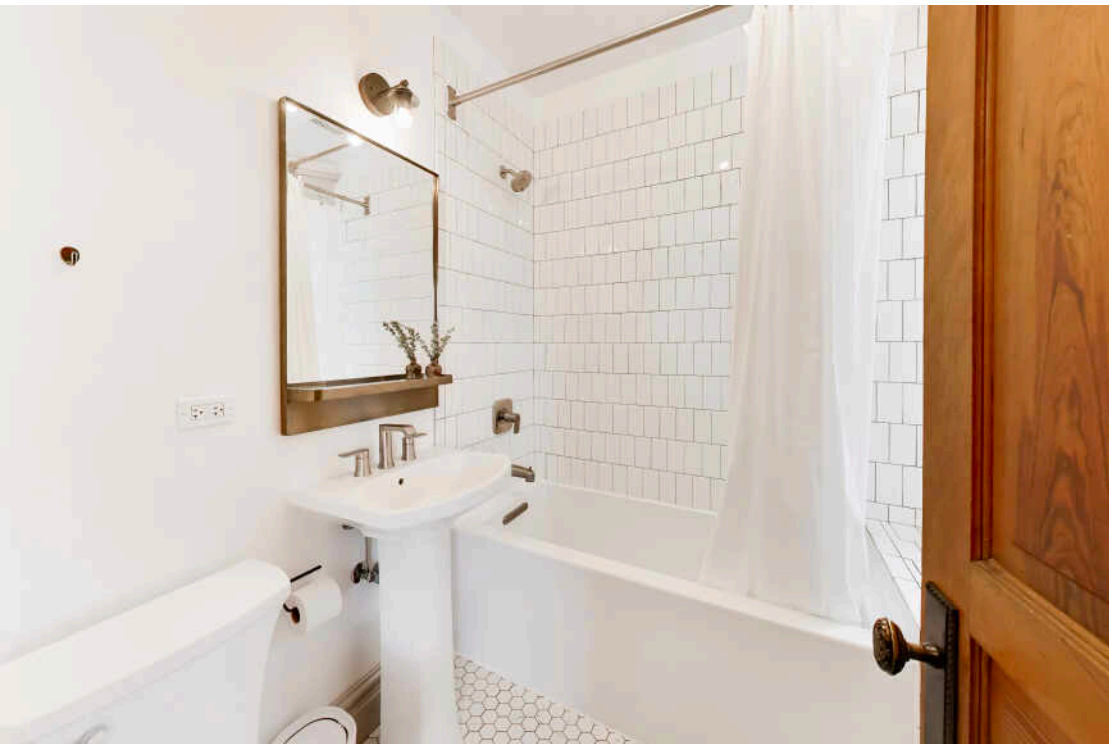
TAXES: \$6065.36 (2024 HO EXEMPTION)

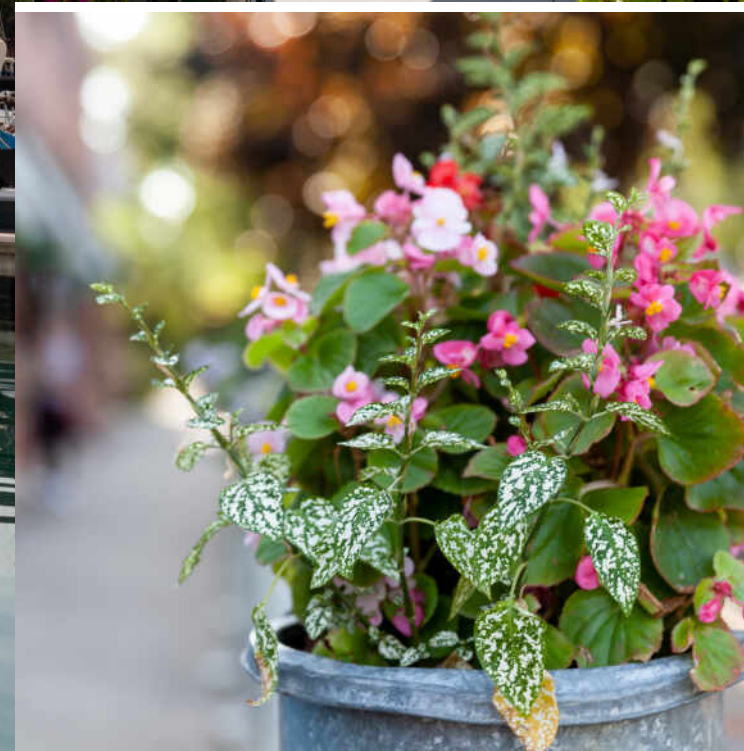
ASSESSMENTS: \$218/MONTH

GORGEOUS TOP-FLOOR 2-BEDROOM CONDO SET IN A STUNNING GREYSTONE ON A TREE-LINED STREET IN THE HEART OF LAKEVIEW!

This exceptional home welcomes you with a private internal staircase and foyer entry, opening to an expansive and thoughtfully designed floor plan featuring a bright living room, separate dining room, and an eat-in kitchen-perfect for both everyday living and entertaining. Flooded with natural light from unobstructed windows on all sides, this home showcases the perfect blend of timeless vintage charm and modern convenience. Rich hardwood floors, a decorative fireplace, original woodwork, and custom built-ins highlight the character throughout, while sought-after updates include central heating and cooling, in-unit laundry, and a beautifully renovated bathroom. The eat-in kitchen is equipped with cherry cabinets and stainless steel appliances, and the home's 9+ foot ceilings and oversized windows create an airy, open feel throughout. Enjoy abundant outdoor space with a spacious rear deck off the kitchen plus a private rooftop deck offering stunning city views. Additional features include easy permit street parking, additional storage, and an unbeatable location just steps to public transportation, restaurants, nightlife, retail, and so much more. Situated near highly regarded Tubman Elementary, this home truly has it all!







CHICAGOANS WILL FIND MORE THAN A FEW OF THEIR FAVORITE THINGS IN **LAKEVIEW**, ONE OF THE LARGEST NEIGHBORHOODS ON THE CITY'S NORTH SIDE.

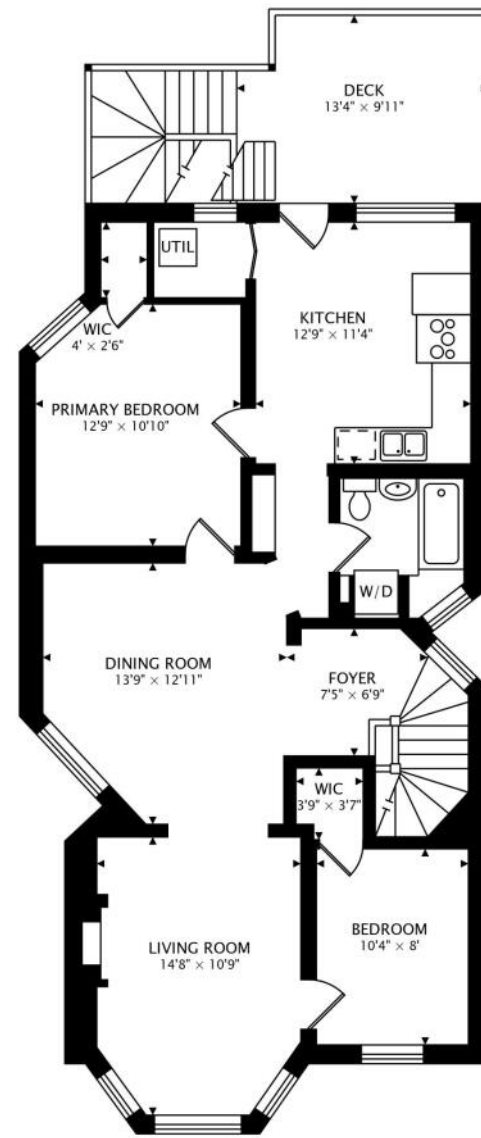
For starters, there's Lakeview's proximity to the beach and public transit, quiet residential streets, thriving restaurant and bar scene, and Wrigley Field.

Then there's the neighborhood's historic theaters and notable architecture. The Music Box Theater has been operating since it opened in 1929, originally showing silent films accompanied by a live organ player. It now plays independent and foreign films.

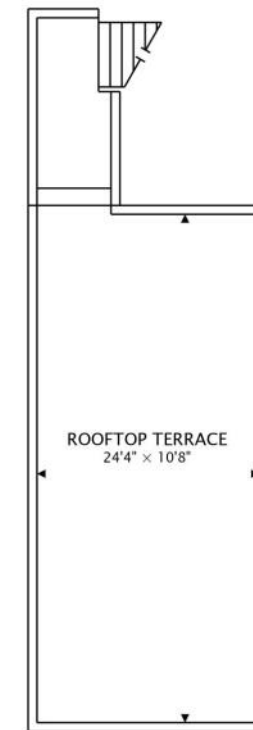
Did we mention the outdoor festivals, farmers markets, nightlife, and cultural attractions? Lakeview is home to the Belmont Theater District with over 30 theaters and live performance venues near the Belmont "L" station. Residents also have a front-row seat to the Chicago Marathon, Chicago Pride Parade, and Bike the Drive.

And we can't forget shopping - shops on the Southport Corridor, independent businesses on Lincoln Avenue, and unique boutiques sprinkled throughout the neighborhood.

Lakeview includes a variety of housing styles and prices. Homes run the gamut from vintage walk-ups, condominiums, new construction three-flats, loft buildings, converted courtyard buildings, and high-rises. There are also a variety of single-family homes from stately mansions near Lincoln Park to contemporary new construction throughout the neighborhood.



SUITE
1096 sq ft + 126 sq ft DECK



ROOFTOP
291 sq ft TERRACE



AMANDA MCMILLAN

AMANDA@CHICAGOHOMEPARTNER.COM

CHICAGOHOMEPARTNER.COM

773-537-1300