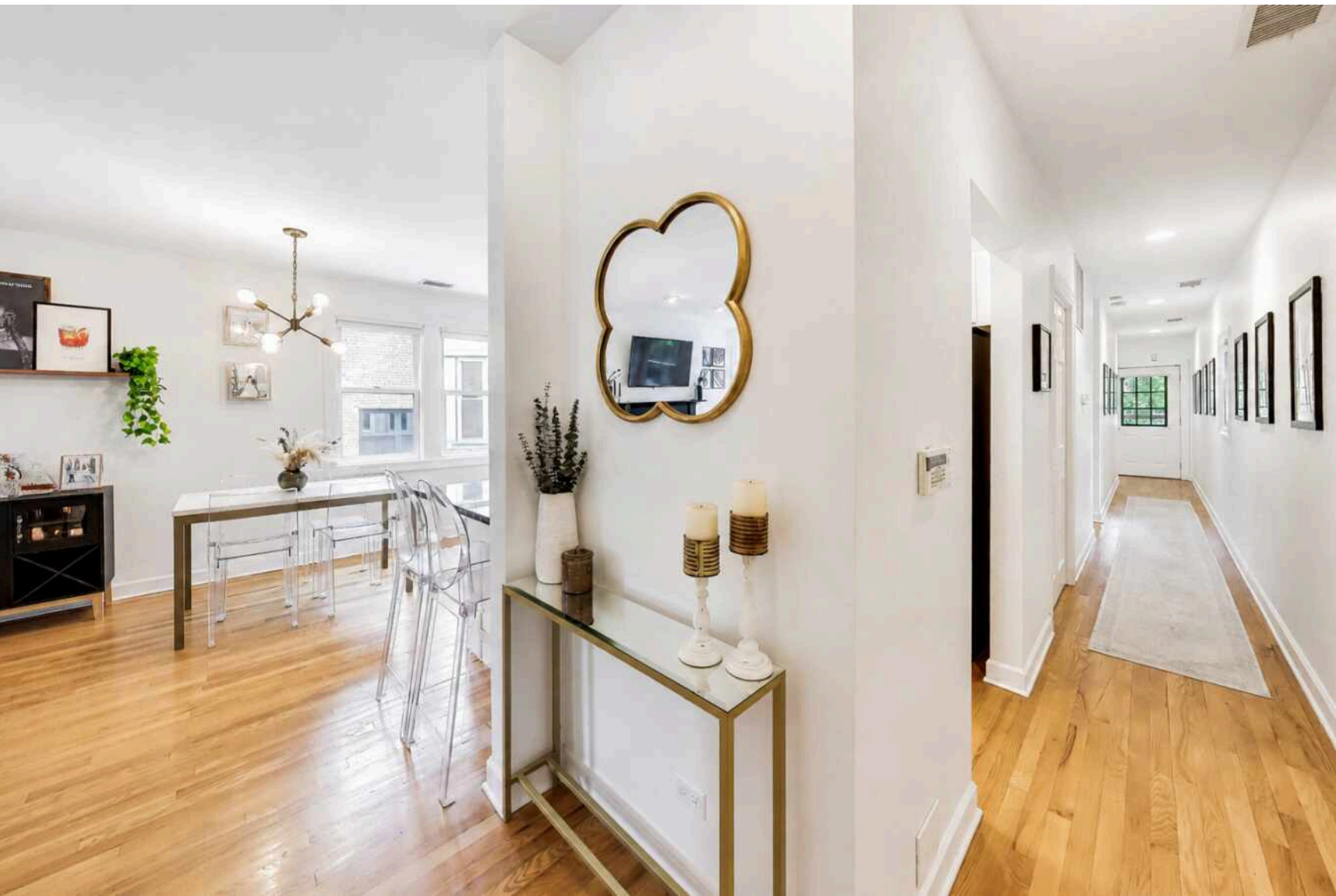


3051 N CLIFTON AVENUE #2
LAKEVIEW





ROOM DIMENSIONS

FOYER : 6' × 4'

LIVING ROOM : 17' × 11'

DINING ROOM : 9' × 8'

KITCHEN : 11' × 8'

PRIMARY BEDROOM : 15' × 11'

WALK-IN CLOSET : 8' × 5'

SECOND BEDROOM : 13' × 9'

DECK : 18' × 8'

2 BEDROOM

2 BATH

**TAXES: \$8,007.81 (2024, NO
EXEMPTIONS)**

ASSESSMENTS: \$257/MONTH

LOCATED ON A TREE-LINED STREET IN THE HEART OF LAKEVIEW, THIS UPDATED 2 BED / 2 BATH CONDO OFFERS THE PERFECT BLEND OF WARMTH, STYLE, & FUNCTIONALITY.

Thoughtfully designed with subtle twists on the traditional newer-construction floor plan, the home features more defined and versatile living spaces while still maintaining an open, airy feel ideal for both everyday living and entertaining. Natural light fills the home through plentiful, unobstructed windows, highlighting the inviting living room with fireplace and separate dining area - a highly functional layout rarely found in city living. The updated kitchen blends timeless style and practicality with white cabinetry, stainless steel appliances, granite countertops, updated pendant lighting, and flexible seating options. Recent improvements include refreshed bathrooms, updated lighting throughout, and tasteful cosmetic updates that give the home a polished, move-in-ready feel. The spacious primary suite serves as a true retreat with a large walk-in closet and spa-inspired ensuite bath. The generously sized second bedroom, exceptional interior closet space, and side-by-side in-unit laundry add everyday convenience and functionality. Additional highlights include garage parking, extra storage, and a stunning private back deck with porch swing tucked into the tree canopy - a true city retreat. Set within a well-maintained building in the highly desirable Tubman Elementary and sought-after Lincoln Park High School, this home is ideally located with easy proximity to the lakefront, Southport Corridor, Lincoln Avenue, neighborhood dining, nightlife, grocery stores, and transit. Exceptional Lakeview living at its finest.





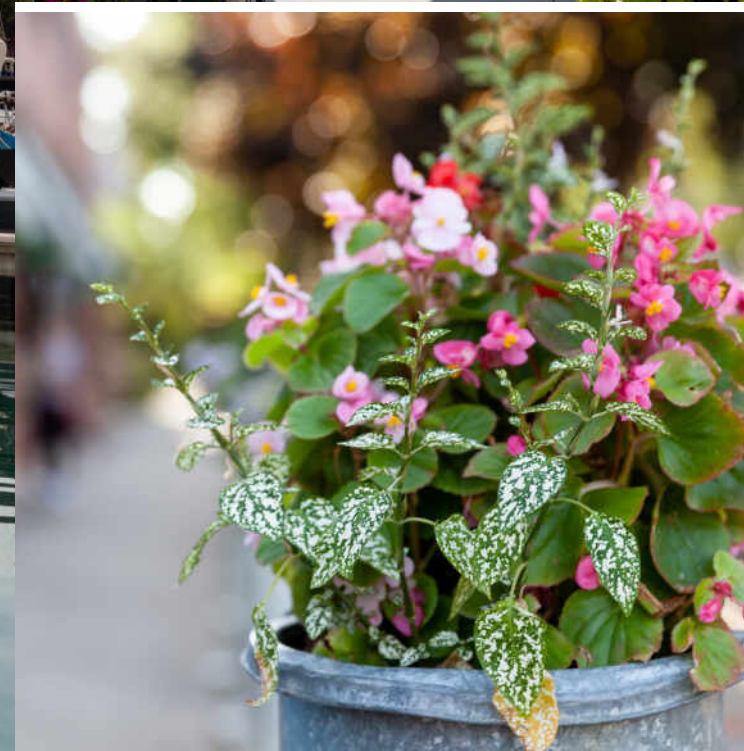




10 3051 N CLIFTON AVENUE #2



3051 N CLIFTON AVENUE #2 11



CHICAGOANS WILL FIND MORE THAN A FEW OF THEIR FAVORITE THINGS IN **LAKEVIEW**, ONE OF THE LARGEST NEIGHBORHOODS ON THE CITY'S NORTH SIDE.

For starters, there's Lakeview's proximity to the beach and public transit, quiet residential streets, thriving restaurant and bar scene, and Wrigley Field.

Then there's the neighborhood's historic theaters and notable architecture. The Music Box Theater has been operating since it opened in 1929, originally showing silent films accompanied by a live organ player. It now plays independent and foreign films.

Did we mention the outdoor festivals, farmers markets, nightlife, and cultural attractions? Lakeview is home to the Belmont Theater District with over 30 theaters and live performance venues near the Belmont "L" station. Residents also have a front-row seat to the Chicago Marathon, Chicago Pride Parade, and Bike the Drive.

And we can't forget shopping - shops on the Southport Corridor, independent businesses on Lincoln Avenue, and unique boutiques sprinkled throughout the neighborhood.

Lakeview includes a variety of housing styles and prices. Homes run the gamut from vintage walk-ups, condominiums, new construction three-flats, loft buildings, converted courtyard buildings, and high-rises. There are also a variety of single-family homes from stately mansions near Lincoln Park to contemporary new construction throughout the neighborhood.



1203 sq ft + 162 sq ft DECK



AMANDA MCMILLAN

AMANDA@CHICAGOHOMEPARTNER.COM

CHICAGOHOMEPARTNER.COM

773-537-1300