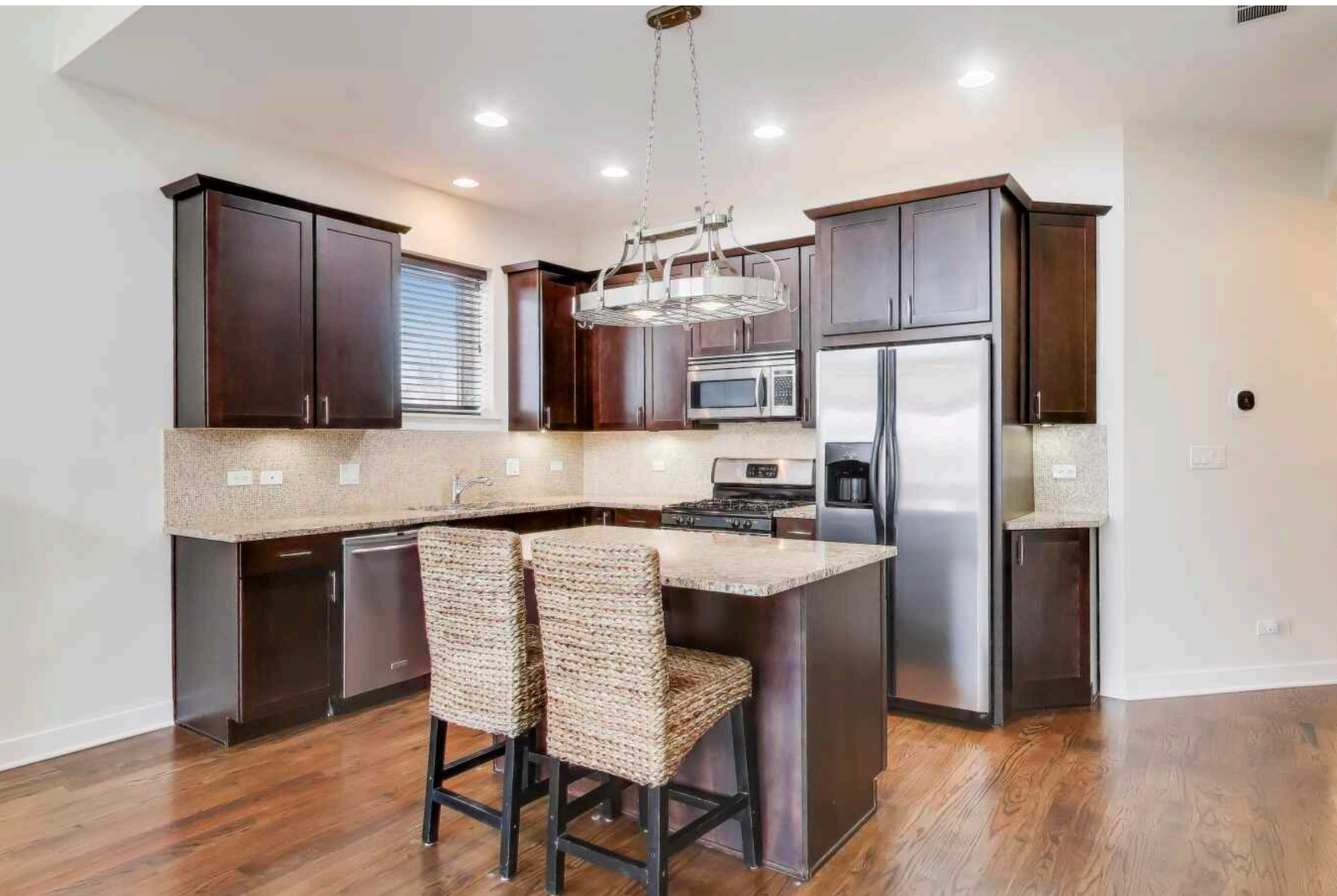


3051 N HARLEM AVENUE #3N
MONTCLARE





ROOM DIMENSIONS

KITCHEN : 14' × 10'

LIVING/DINING : 14' × 14'

PRIMARY BED : 14' × 12'

BEDROOM 2 : 12' × 9'

BEDROOM 3 : 11' × 9'

3 BEDROOM

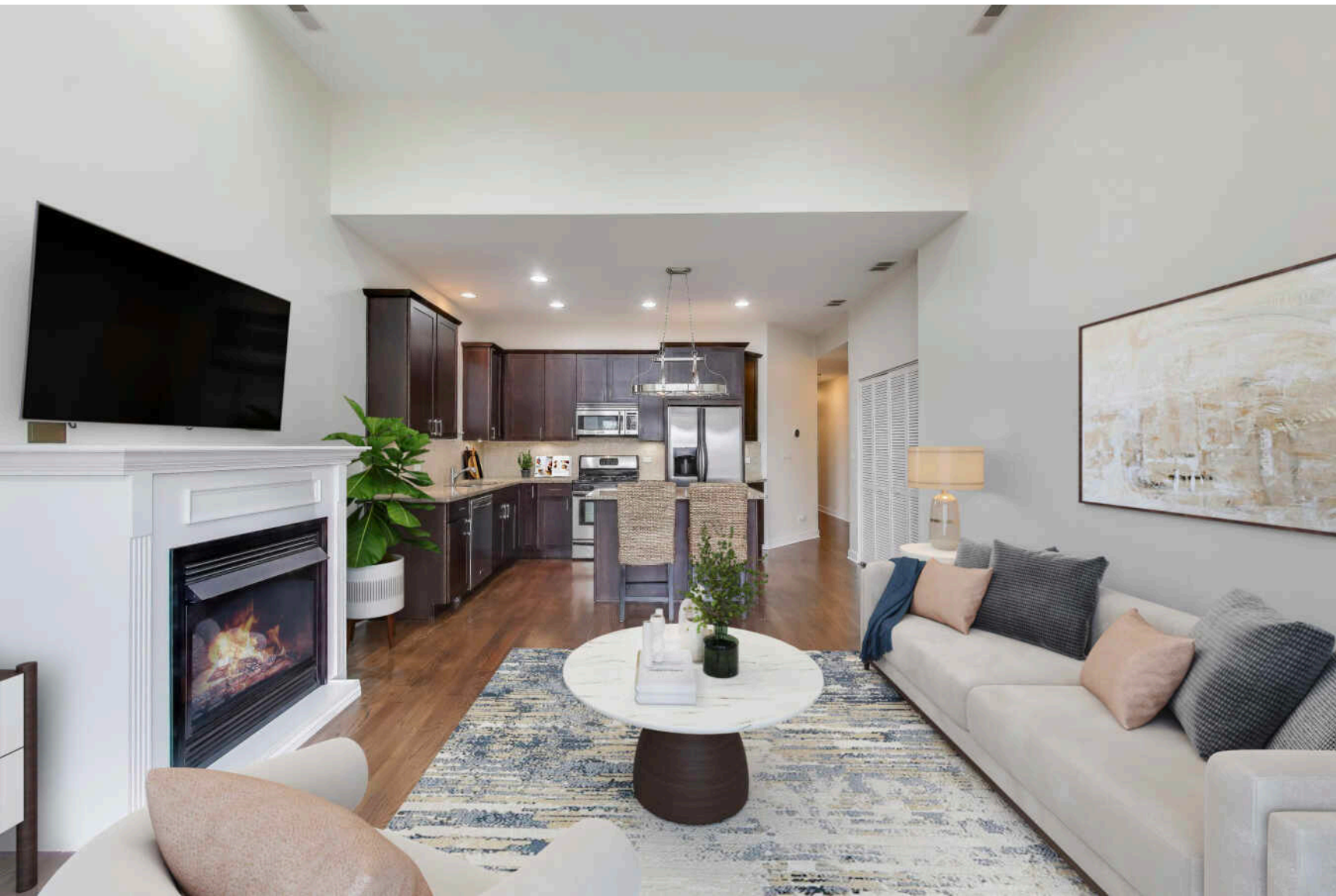
2 BATH

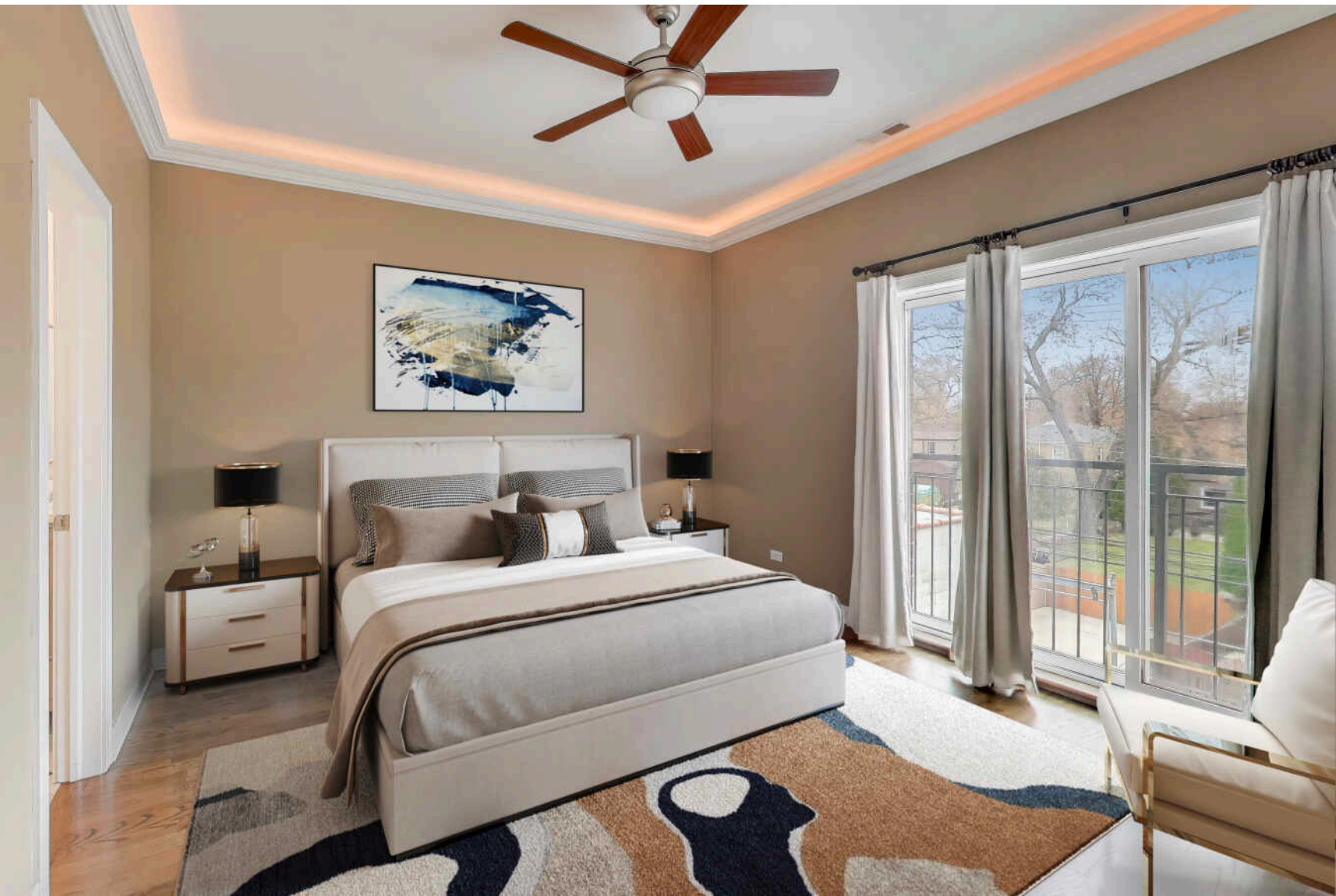
TAXES: \$3520

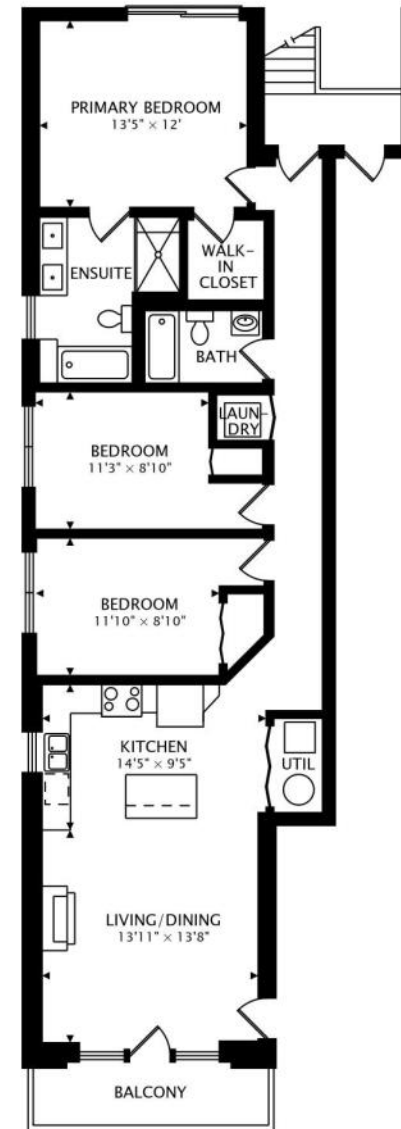
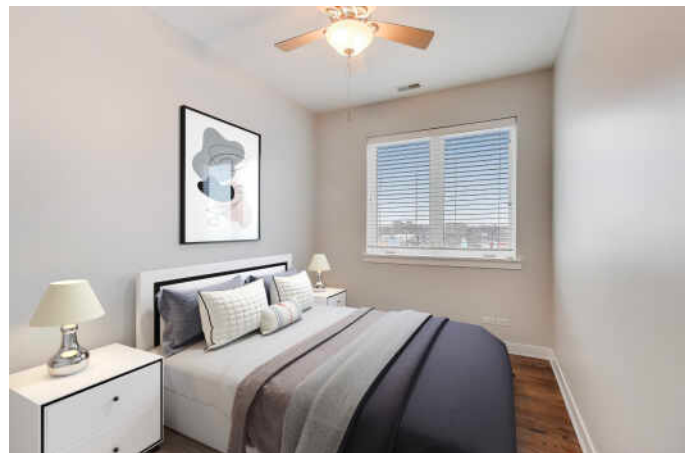
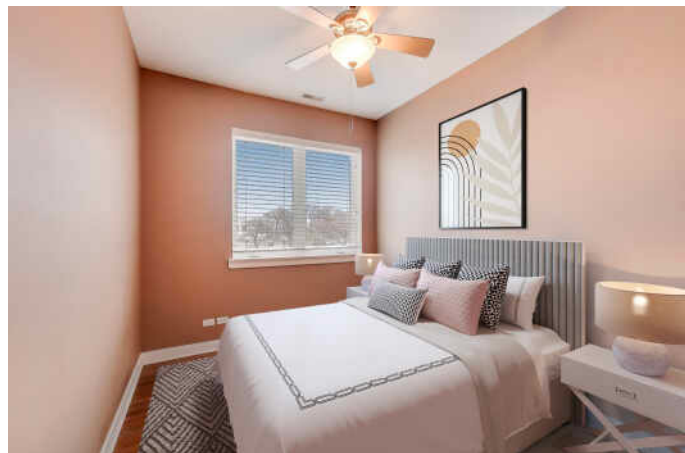
ASSESSMENTS: \$325

PRESENTING A STUNNING TOP-FLOOR CONDO IN THE DUNNING NEIGHBORHOOD OF CHICAGO

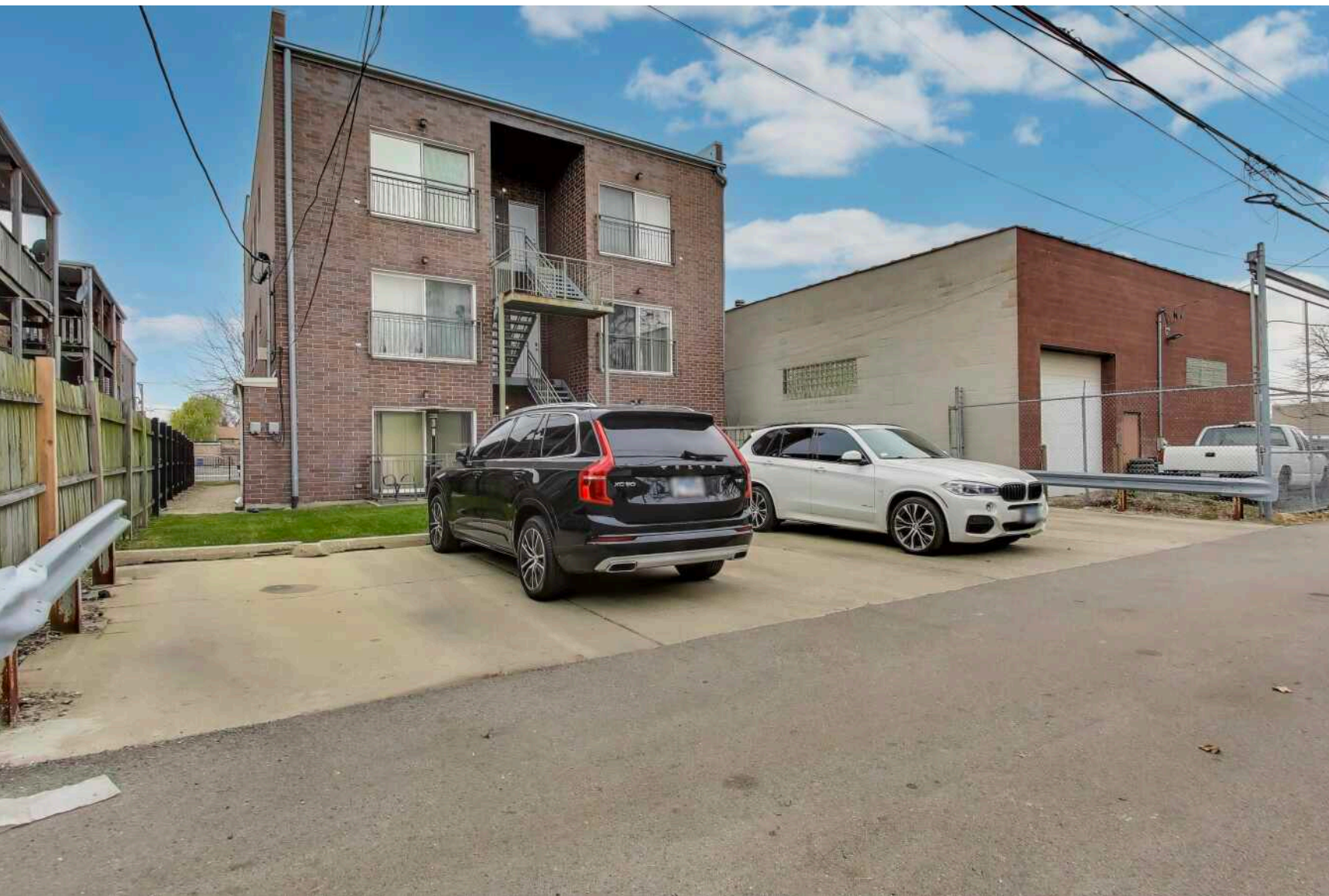
Presenting a stunning top-floor condo in the desirable Dunning neighborhood of Chicago. This beautiful 3-bedroom, 2-bathroom unit offers approximately 1,300 sq. ft. of living space and features sleek, contemporary finishes throughout. This exceptional top-floor unit features a dream kitchen with espresso cabinets, 1-1/4" granite countertops, large island and stainless steel appliances. The primary bathroom is a spa-like retreat with a marble finish, double vanity, separate shower, and a relaxing Jacuzzi tub. The second bathroom features modern vanities and slate accents. Enjoy walnut-stained hardwood floors throughout the unit, high ceilings, large front balcony, in unit washer/dryer, gas log fireplace and one exterior designated parking spot. Close to public transportation, shops, schools and parks.







1255 sq ft + 60 sq ft BALCONY



NOTES



EDITH SCHELL

773.593.9687

847-692-5522

EDITHSCHELL@ATPROPERTIES.COM

WWW.EDITHSCHELLREALTY.COM



All specifications, features, designs, price, assessments, taxes and materials are subject to change without notice. Depicted floor plans and architectural renderings are only an artist's impression.

