



3071 E 1000 N
LAPORTE

3071 E 1000 N • LAPORTE



KAREN PAVY BROKER

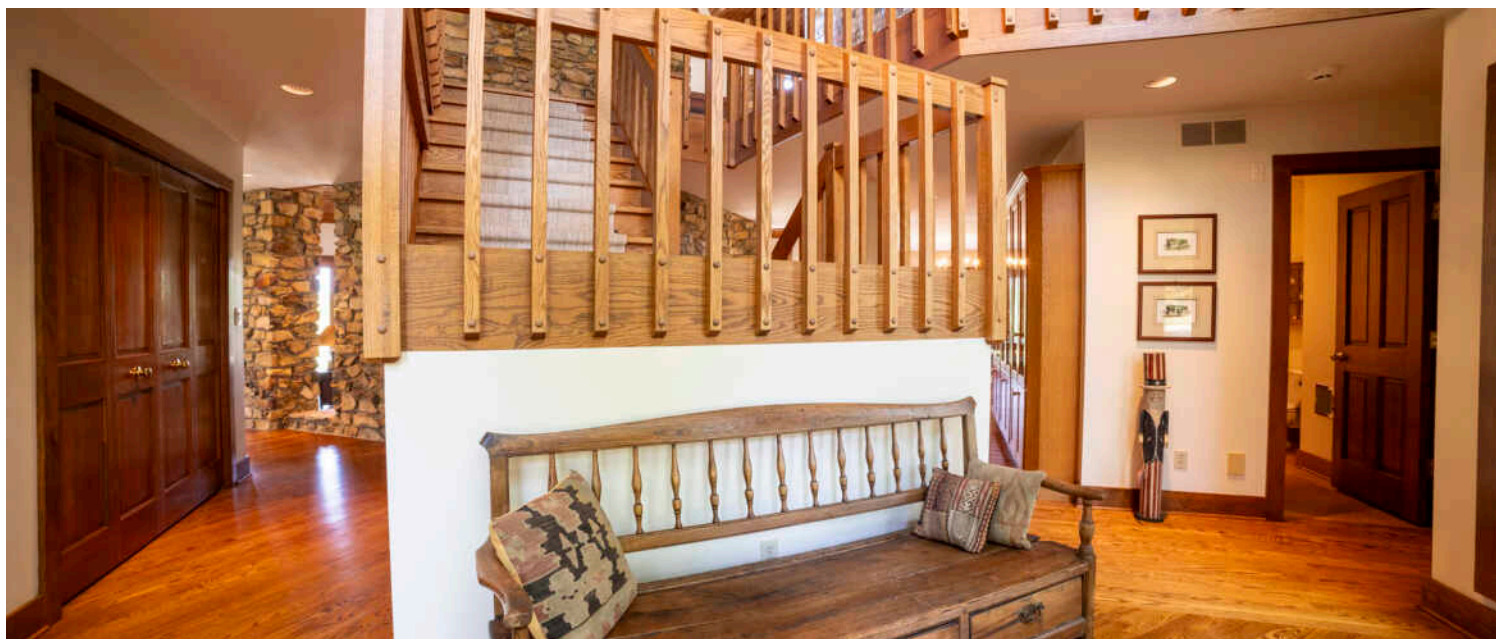
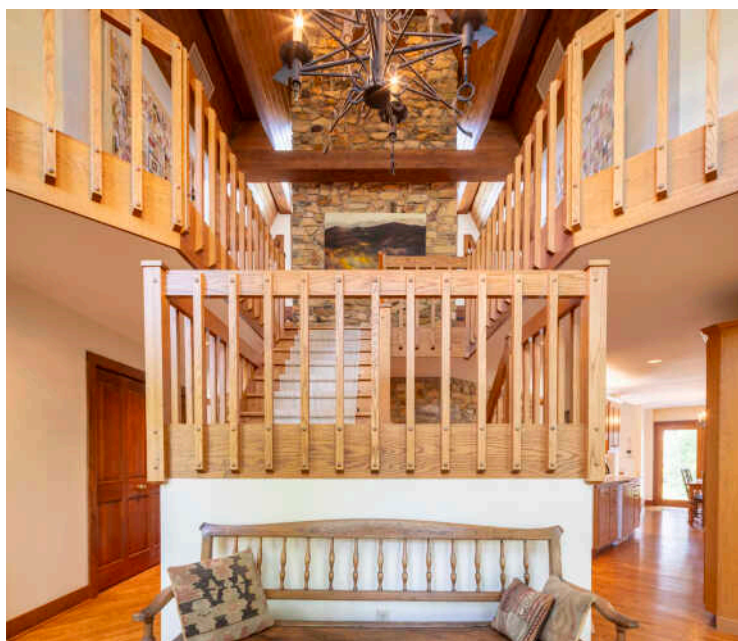
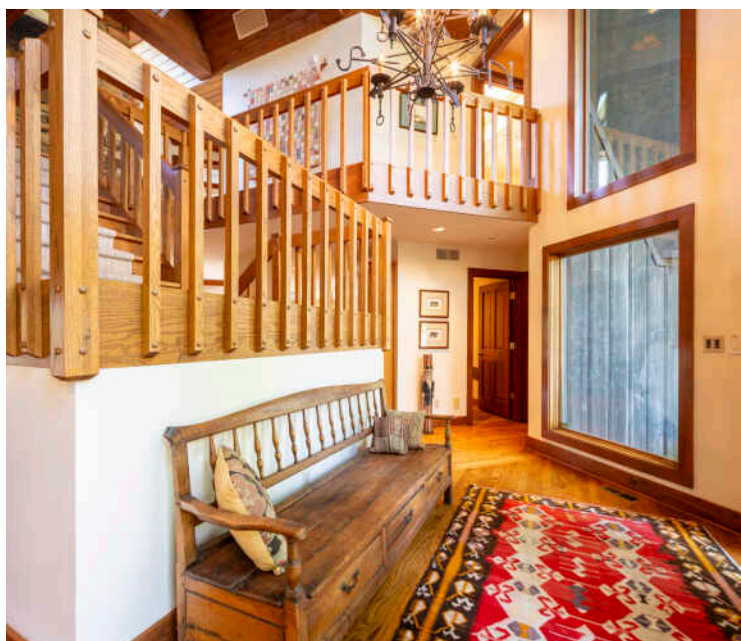
1 2192100494 mobile
219.874.7070 office
kpavy@atproperties.com

@properties | CHRISTIE'S
INTERNATIONAL REAL ESTATE

LP LUXURY
PORTFOLIO
INTERNATIONAL

3071 E 1000 N • LAPORTE





3071 E 1000 N

FEATURES

Welcome to a perfectly private rustic retreat set on 97 serene acres in the coveted corridor of Galena Township. This remarkable estate offers five spacious bedrooms and four bathrooms, blending timeless style, modern comfort, and the beauty of its natural surroundings. The moment you enter, you are met with a soaring cathedral ceiling and a striking wooden staircase that sets the tone for the home's inviting warmth. The open-concept kitchen, dining, and living areas feature tongue-and-groove vaulted ceilings and a dramatic floor-to-ceiling stone fireplace, while a wall of French doors floods the space with natural light and leads to a sunroom and wraparound deck. From here, enjoy the sweeping views of a tranquil pond and lush tree farm creating an atmosphere perfect for both everyday living and unforgettable gatherings. The gourmet kitchen is a chef's dream, with shaker cabinetry, granite countertops, generous island, and a dedicated coffee bar. Beautiful hardwood floors flow throughout, enhancing the home's sense of cohesion. The main level also offers a convenient laundry room, while additional living spaces include a billiards room and a cozy sitting area with custom bookshelves. The walkout basement is a showstopper in its own right, anchored by another floor-to-ceiling fireplace and framed by French doors and expansive windows that bring the outdoors in. Beyond the home, a classic timber-and-peg barn stands ready for its next chapter--whether as a guesthouse, event venue, workshop, or studio. The property, meticulously maintained and irrigated, could easily return to a working farm. Mature trees, scenic walking trails, and a peaceful pond with a dock offer endless opportunities for outdoor recreation and quiet reflection.



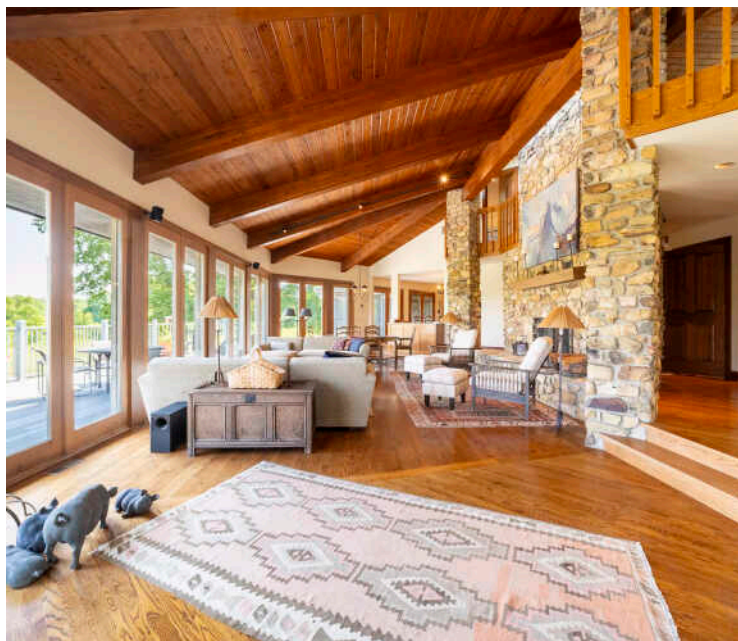
KAREN PAVY BROKER

1 2192100494 mobile
219.874.7070 office

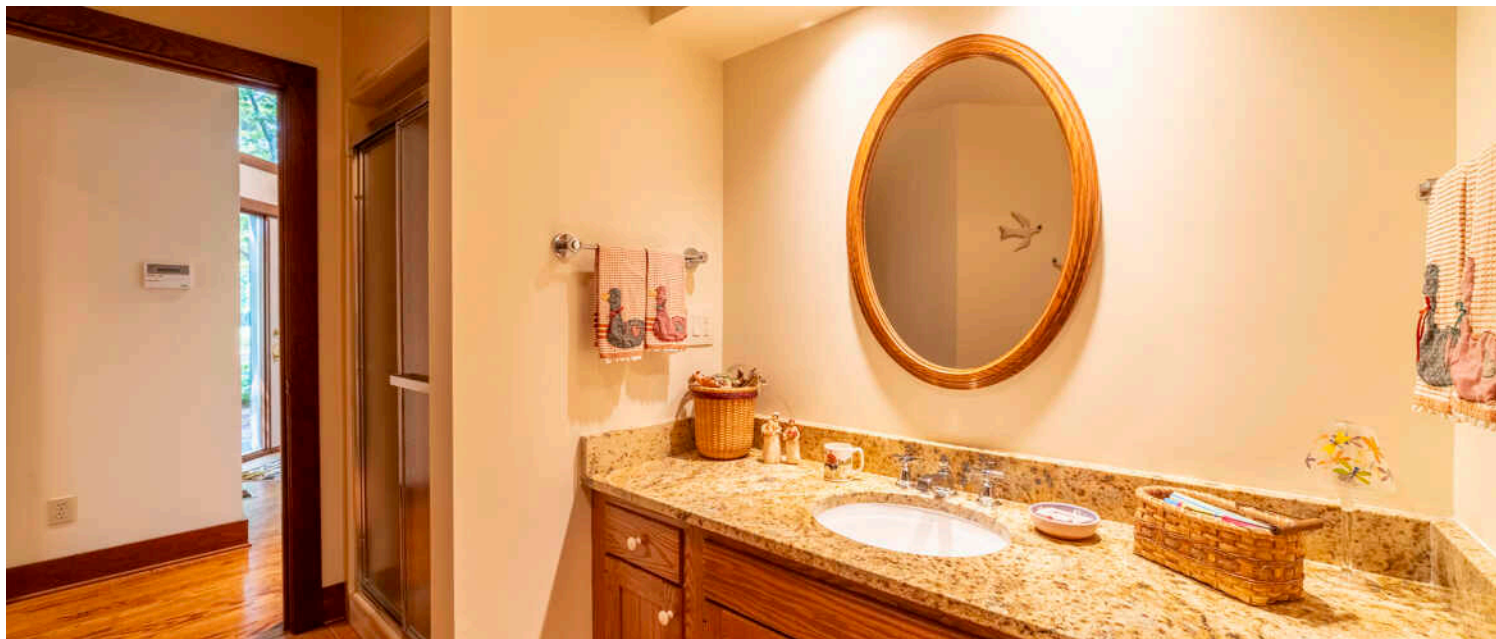
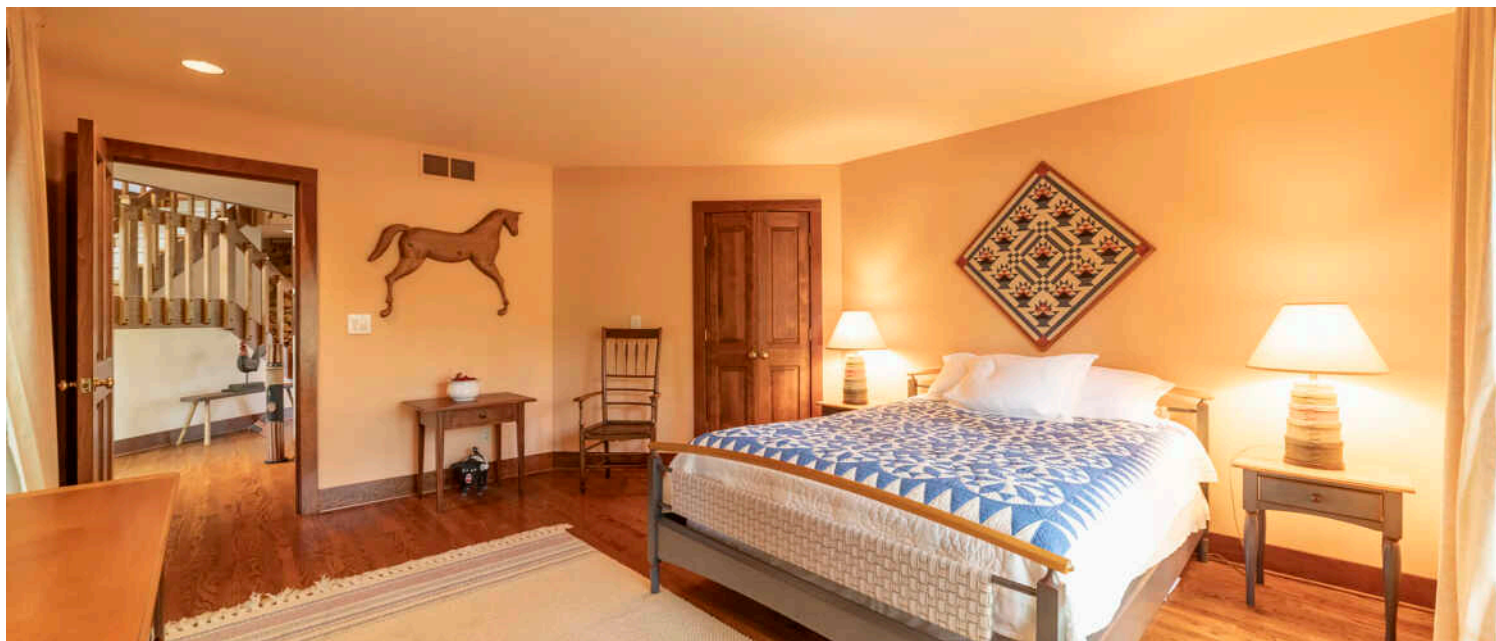
kpavy@atproperties.com

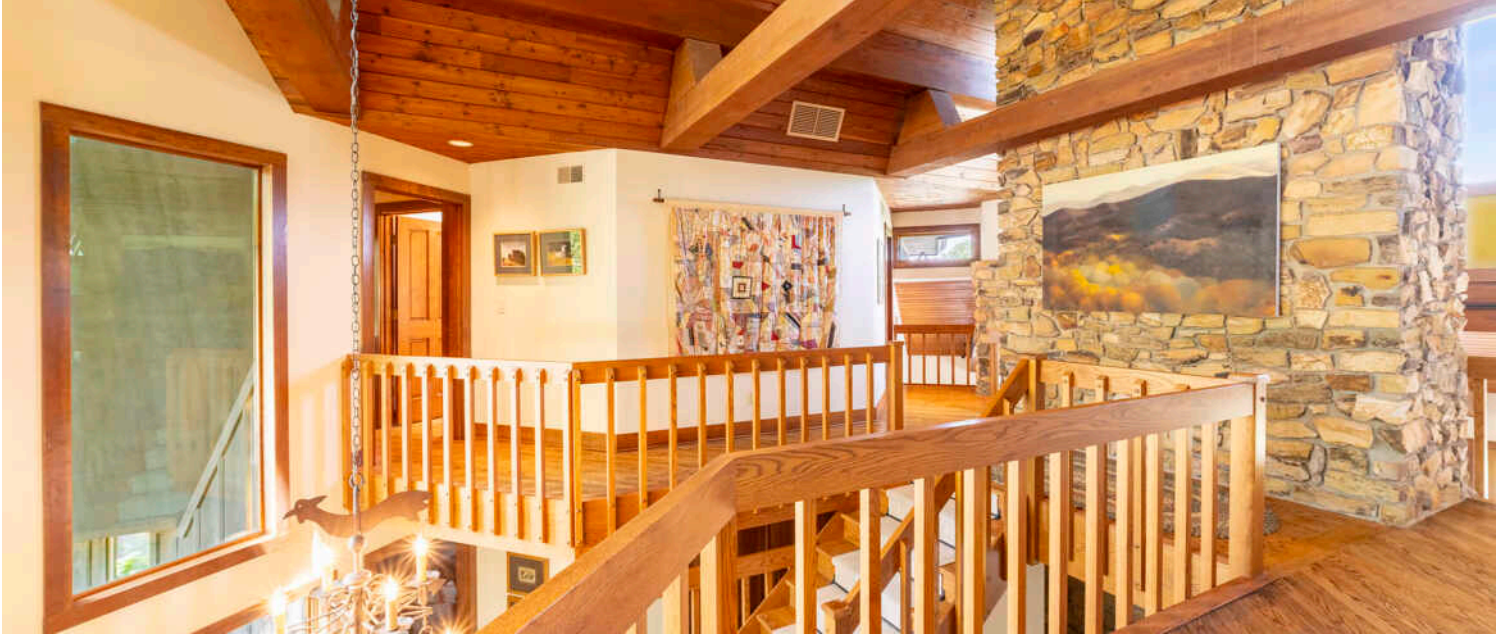


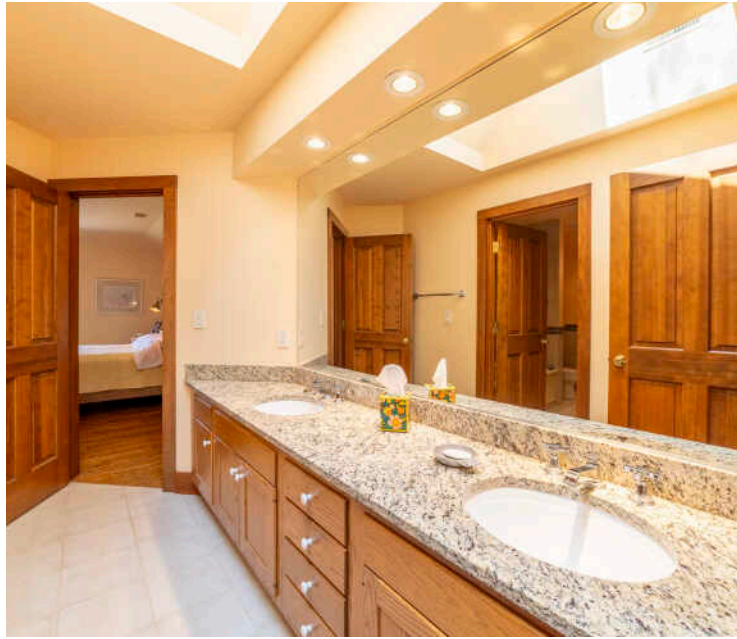


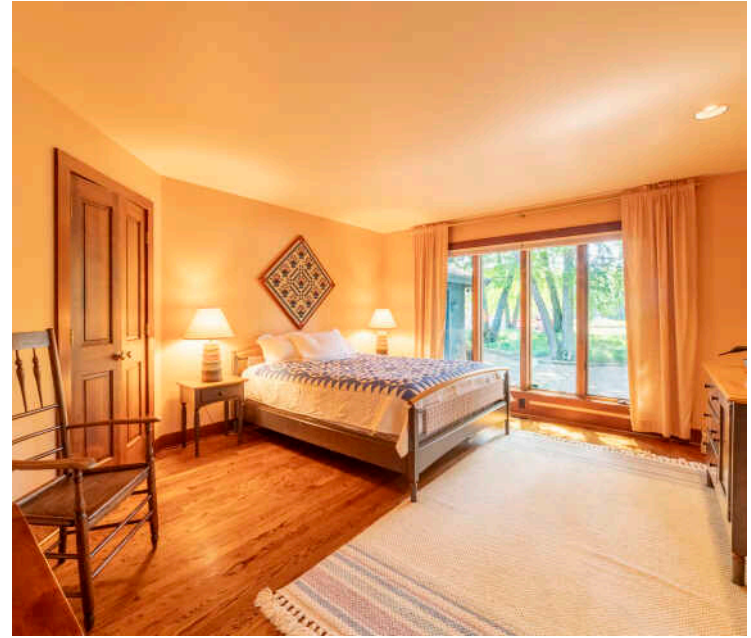


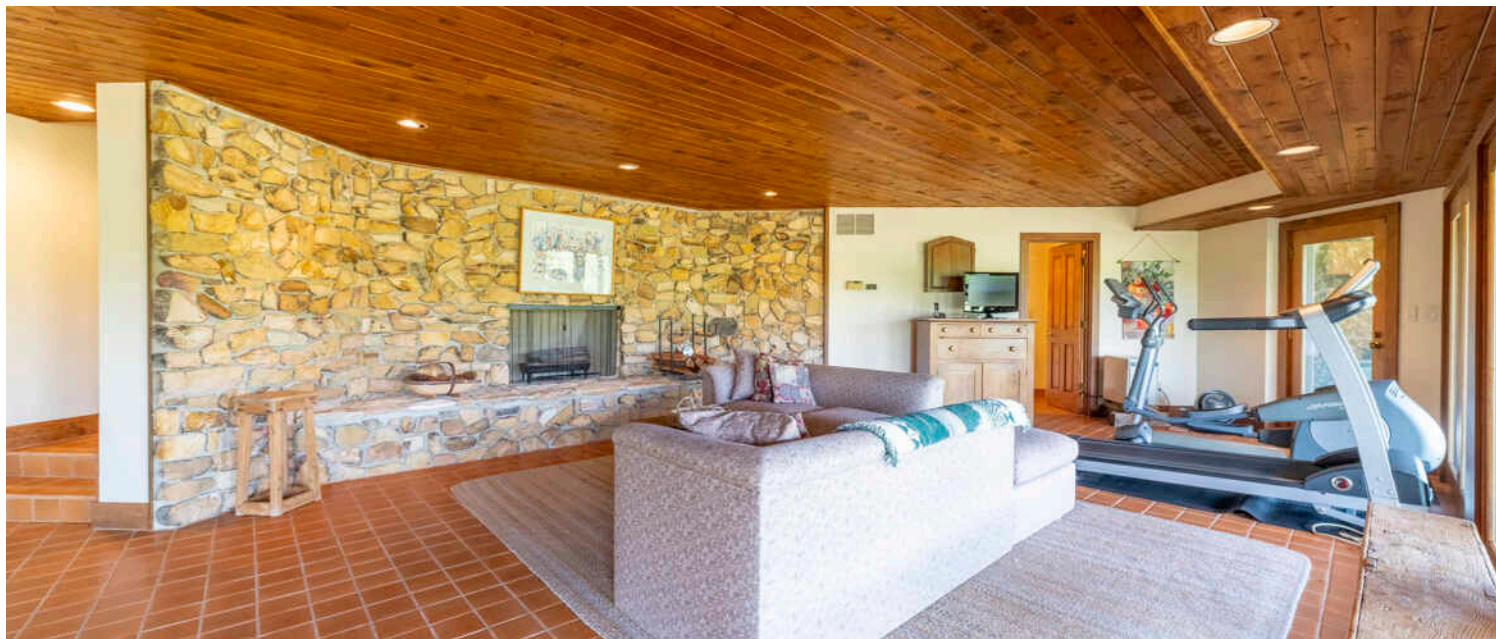
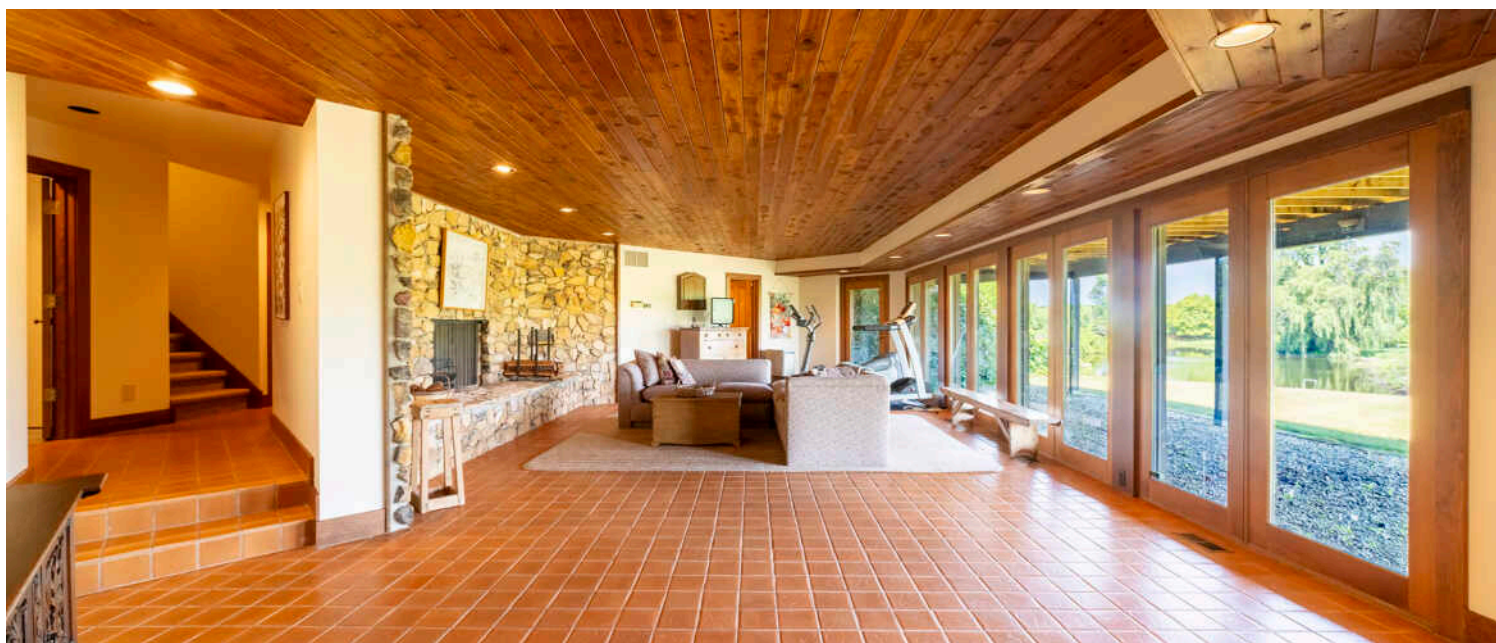






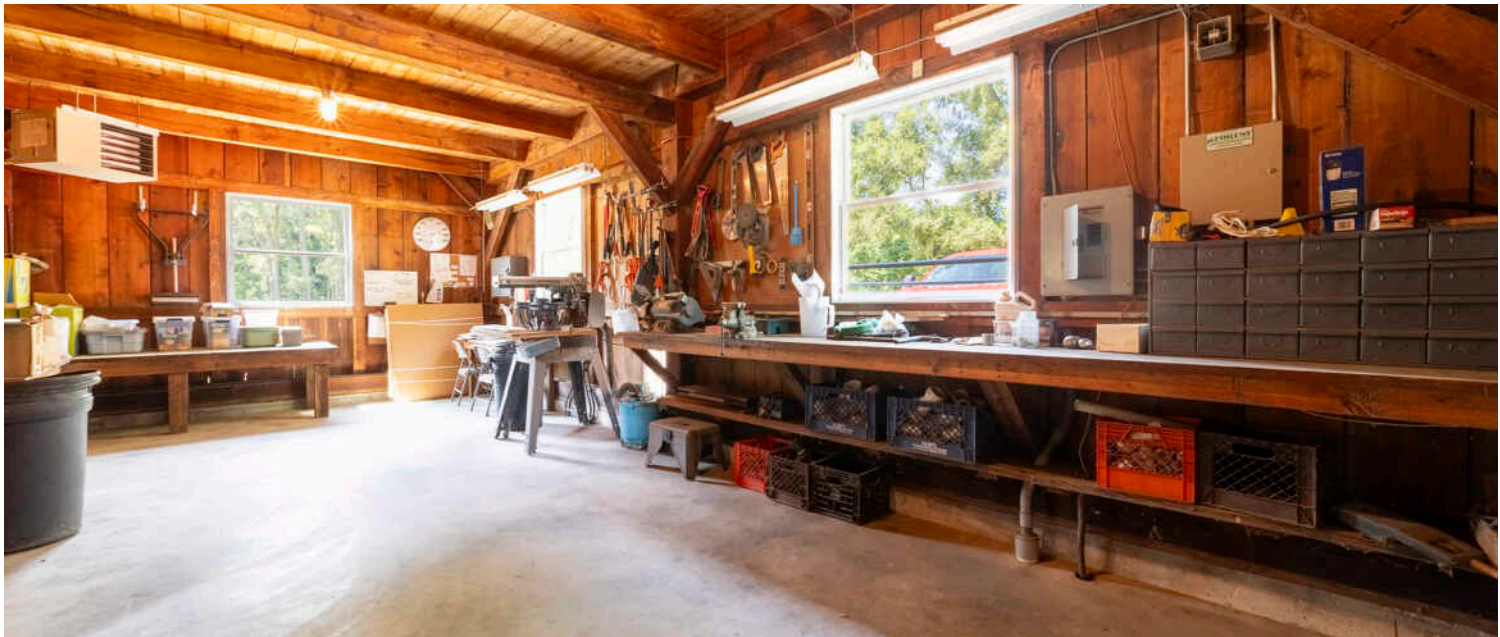


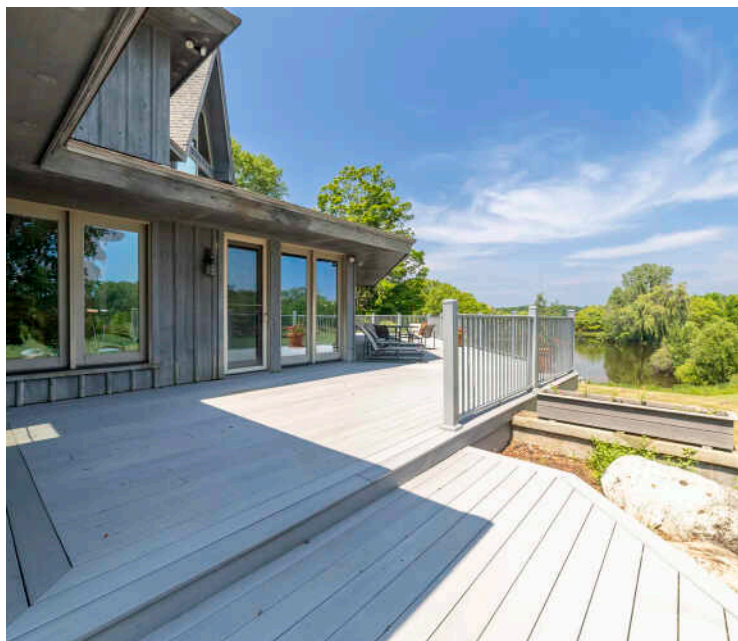
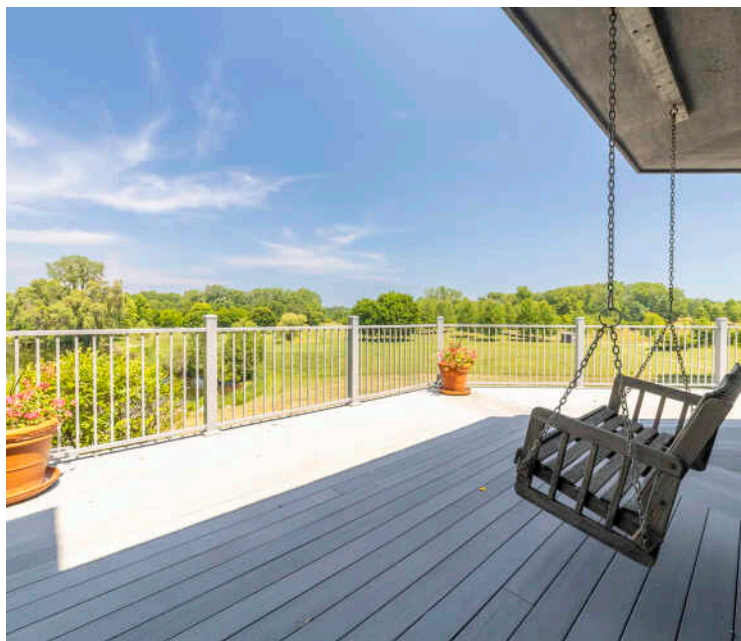








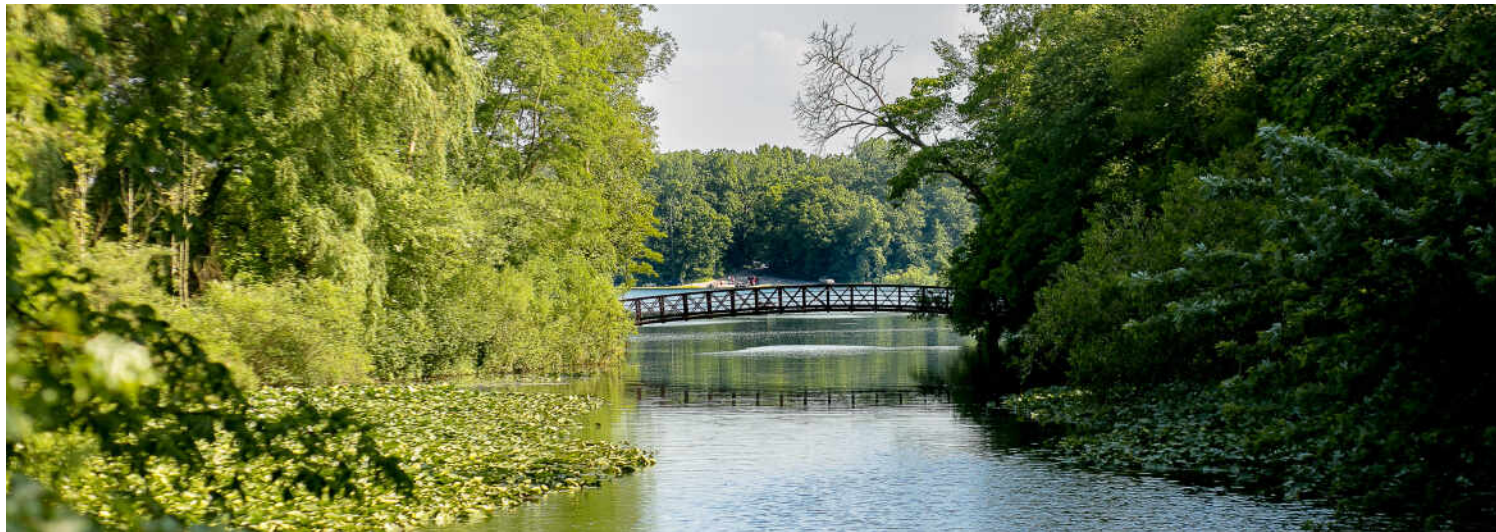












NICKNAMED FOR ITS NUMEROUS MAPLE TREES, **LA PORTE** IS A HISTORIC CITY WITH PLENTY OF OPPORTUNITIES TO ENJOY THE OUTDOORS.

Locals love La Porte’s rich history, picturesque landscapes, and friendly community. With a mix of small-town charm and modern amenities, the city offers a welcoming atmosphere and a range of recreational opportunities for residents and visitors alike.

Downtown La Porte boasts beautiful historic architecture, shopping, dining, entertainment, and a seasonal farmers market. Nine lakes, over a dozen scenic parks, and a slew of annual community events keep residents busy year-round.

In the summer, La Porte hosts the La Porte County Fair, the oldest in Indiana, as well as annual boat and bicycle races. Residents and visitors enjoy Saturdays in the Sun, a series of weekly outdoor fitness classes on Fridays, the annual Sunflower Fair, and the Taste of La Porte event. When the temperatures drop, locals attend WinterFest, a winter-themed celebration featuring ice sculpture demonstrations, a “snowball softball” tournament, a breakfast with the birds at Luhr County Park Nature Center, and horse-drawn wagon rides at Soldiers Memorial Park.

Housing options in LaPorte primarily include condominiums, townhomes, charming bungalows, and single-family homes on private wooded lots.

La Porte is accessible by Amtrak, three major interstates (I-80, I-90, and I-94), and TransPorte, which is a demand-response shuttle service that offers transportation around the community.





@properties® | CHRISTIE'S
INTERNATIONAL REAL ESTATE

Leading REAL ESTATE
COMPANIES
OF THE WORLD®

LP
LUXURY
PORTFOLIO
INTERNATIONAL®

