

308 GAGE ROAD
RIVERSIDE





ROOM DIMENSIONS

LIVING ROOM : 19' × 12'
DINING ROOM : 14' × 11'
KITCHEN : 16' × 11'
FAMILY ROOM : 26' × 14'
MUD ROOM : 7' × 5'
PRIMARY BEDROOM : 14' × 13'
PRIMARY SITTING ROOM : 15' × 7'
2ND BEDROOM : 14' × 11'
3RD BEDROOM : 14' × 10'
4TH BEDROOM : 13' × 10'
2ND FLOOR LANDING : 17' × 9'
RECREATION ROOM : 21' × 12'
PLAY ROOM : 19' × 19'
LAUNDRY : 10' × 6'
STORAGE : 14' × 9'
UTILITIES : 11' × 11'

4 BEDROOM

3.1 BATH

TAXES: \$18,282.35

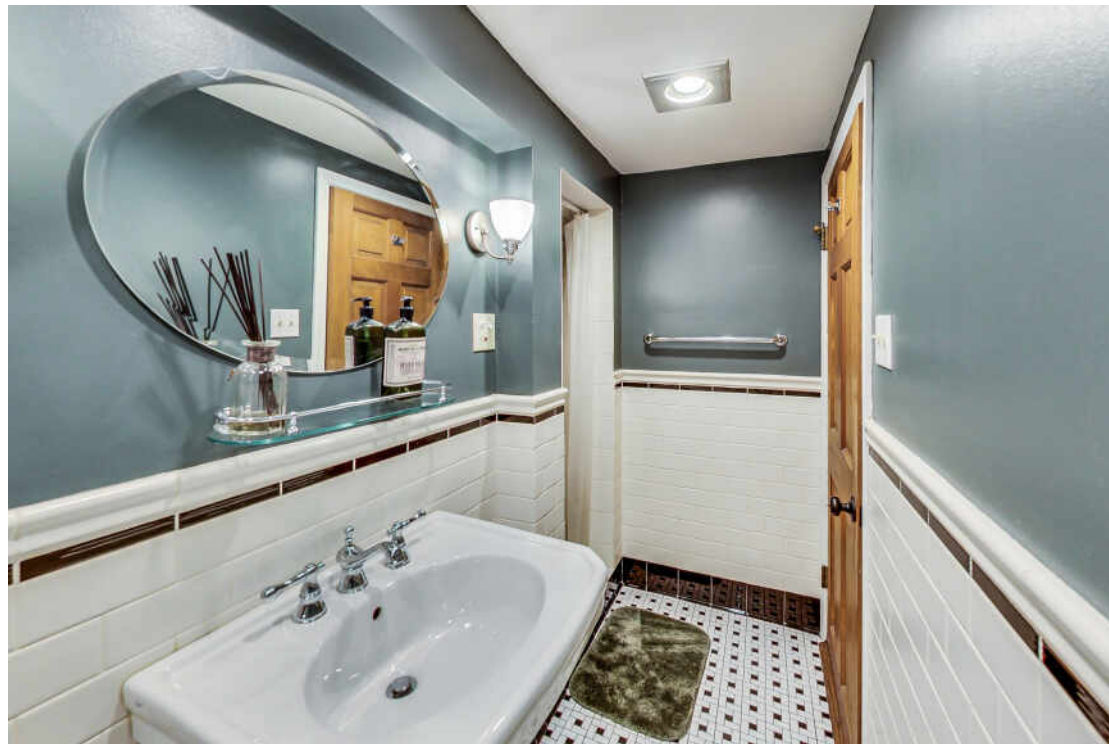
IT'S ALL IN THE DETAILS! EXQUISITE EXPANDED TUDOR PROFESSIONALLY UPDATED WITH STYLE AND ELEGANCE

Beautiful expanded 4 bedroom/3.5 bath brick English Tudor. This exquisite home has been professionally updated to blend modern conveniences with old world charm. Large living room with fireplace & built-in bookcases blends seamlessly into the formal dining room. Dream kitchen with custom cabinets. Integrated cabinet appliances. Gourmet cast iron Aga range. Expansive 1st floor family room with French doors leads to a lovely covered deck overlooking brick patio & landscaped yard. Tranquil primary bedroom suite includes private sitting room, spa like bathroom with double sinks, marble counter tops, & spacious shower. Walk in closet. Two additional bedrooms & full bath complete this level. Finished lower level features a separate media room, bedroom & a full bath.











RIVERSIDE IS CONSIDERED TO BE THE FIRST PLANNED COMMUNITY IN THE UNITED STATES.

Incorporated in 1875, the historically recognized village is noted for its expansive parkways, charming town center, and early 20th century architecture.

The Riverside Landscape Architecture District was designated a National Historic Landmark in 1970. To retain its original aesthetic charm, the village even maintains 379 antique-style gas street lanterns.

Residents take great pride in the community’s history and architecture, which is on display through tours at the Riverside Historical Museum and the Riverside Water Tower. Homes include well-maintained 1920s bungalows, huge Victorians, and early 20th century mansions.

The village features several restaurants including some that have been recognized as among the best in the Chicago area. There are also several unique boutiques and stores selling antiques and Victorian house fixtures – a nod to the town’s rich architectural history.

Riverside students attend District 96 schools including four elementary schools and one junior high school. High school students attend Riverside Brookfield High School, part of the Riverside-Brookfield Township School District 208.

With a train station along Metra’s BNSF Railway, Riverside is a short commute to Chicago’s Union Station.



JEFF BAKER

(708) 567-4901

JEFFBAKER@ATPROPERTIES.COM

BAKERSATBURLINGTON.COM



SARA BAKER

(708) 567-5015

SARABAKER@ATPROPERTIES.COM

BAKERSATBURLINGTON.COM



CHRISTIE'S
INTERNATIONAL REAL ESTATE

308GAGEROAD.INFO