

309 E RUSSET WAY
PALATINE





ROOM DIMENSIONS

LIVING ROOM : 18' x 14'

FAMILY ROOM : 17' x 12'

KITCHEN : 12' x 9'

DINING ROOM : 12' x 11'

BREAKFAST : 13' x 9'

PRIMARY BEDROOM : 15' x 12'

BEDROOM : 20' x 18'

BEDROOM : 13' x 11'

BEDROOM : 11' x 10'

RECREATION ROOM : 26' x 19'

LAUNDRY/UTILITIES : 29' x 12'

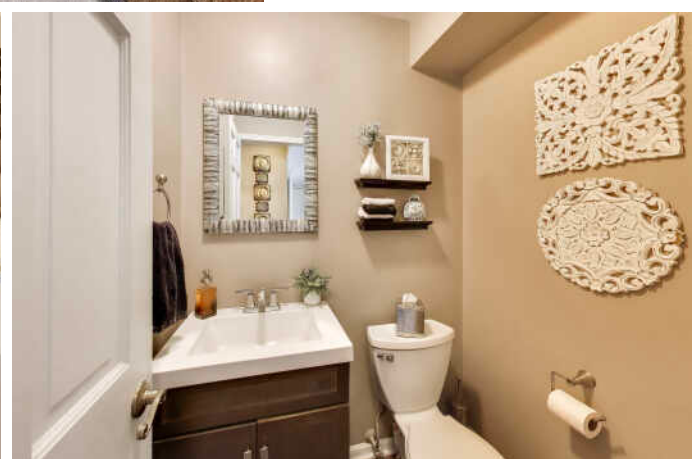
4 BEDROOM

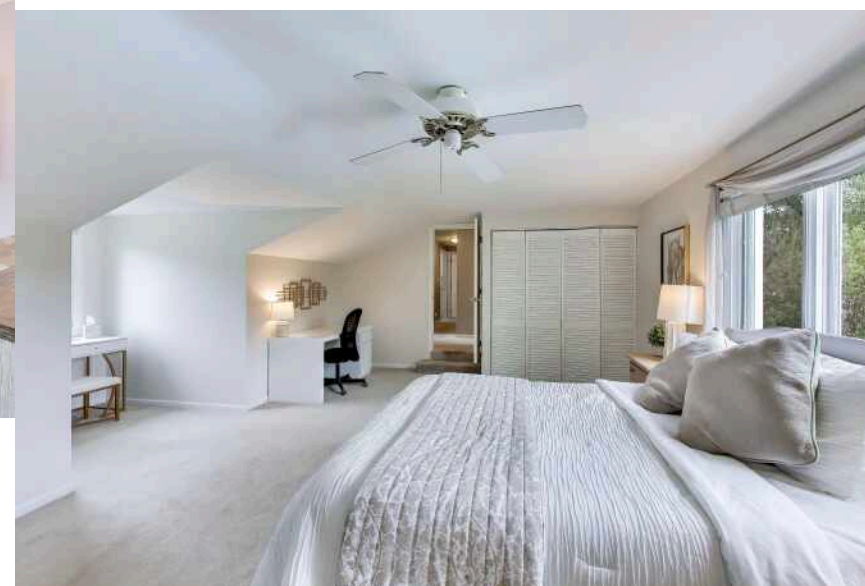
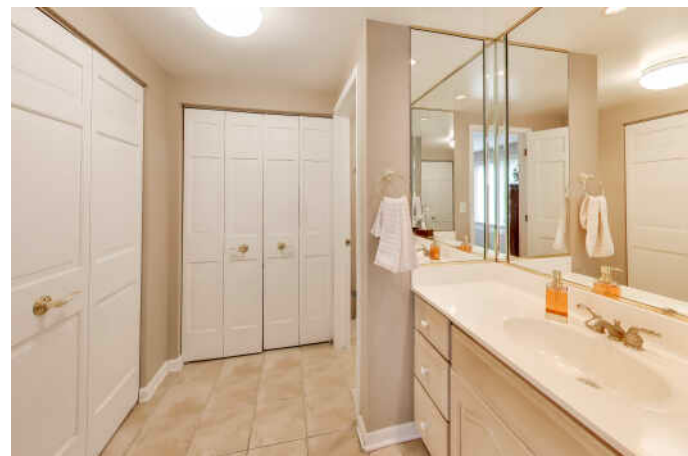
2.1 BATH

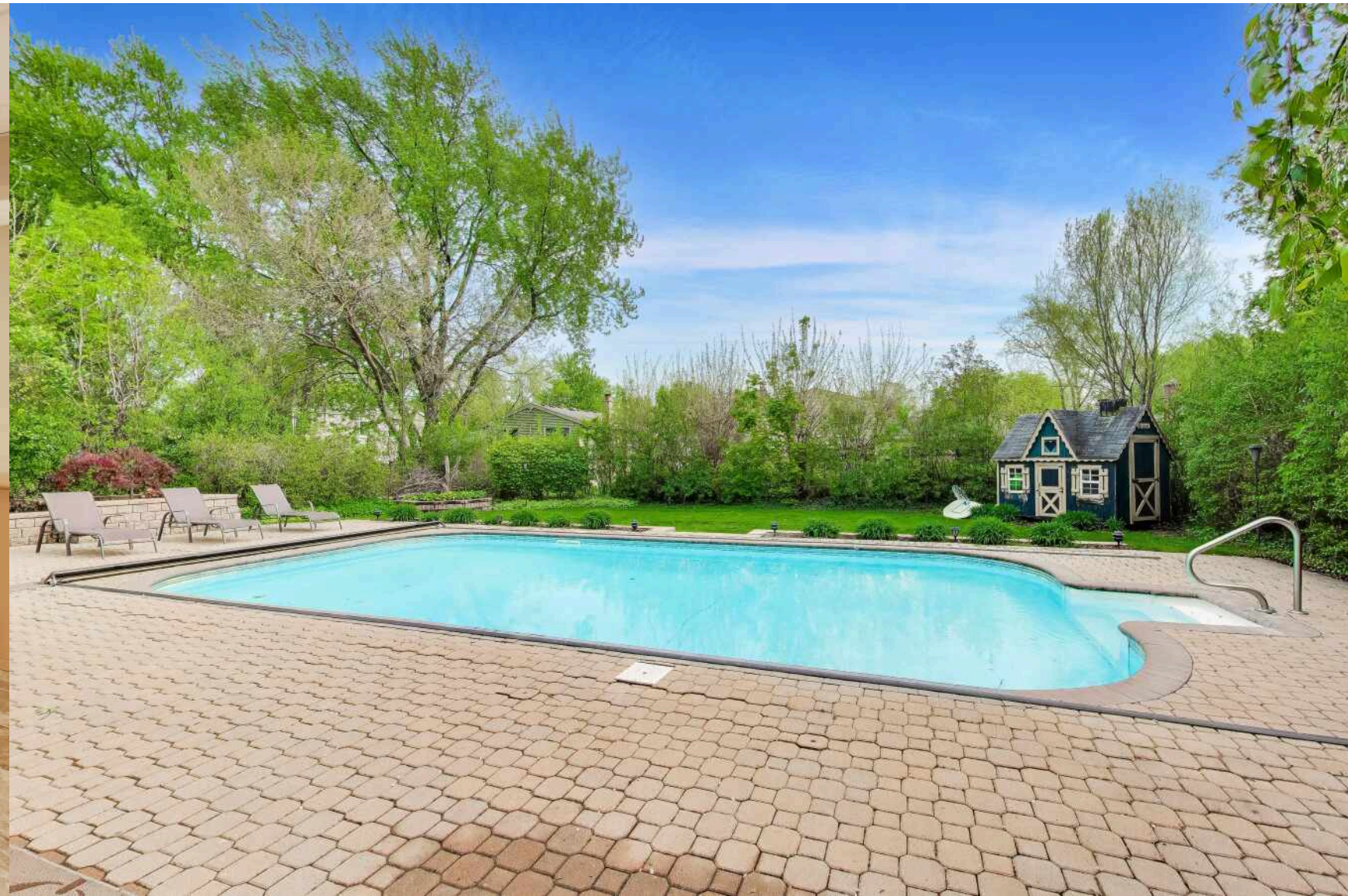
TAXES: \$10,818

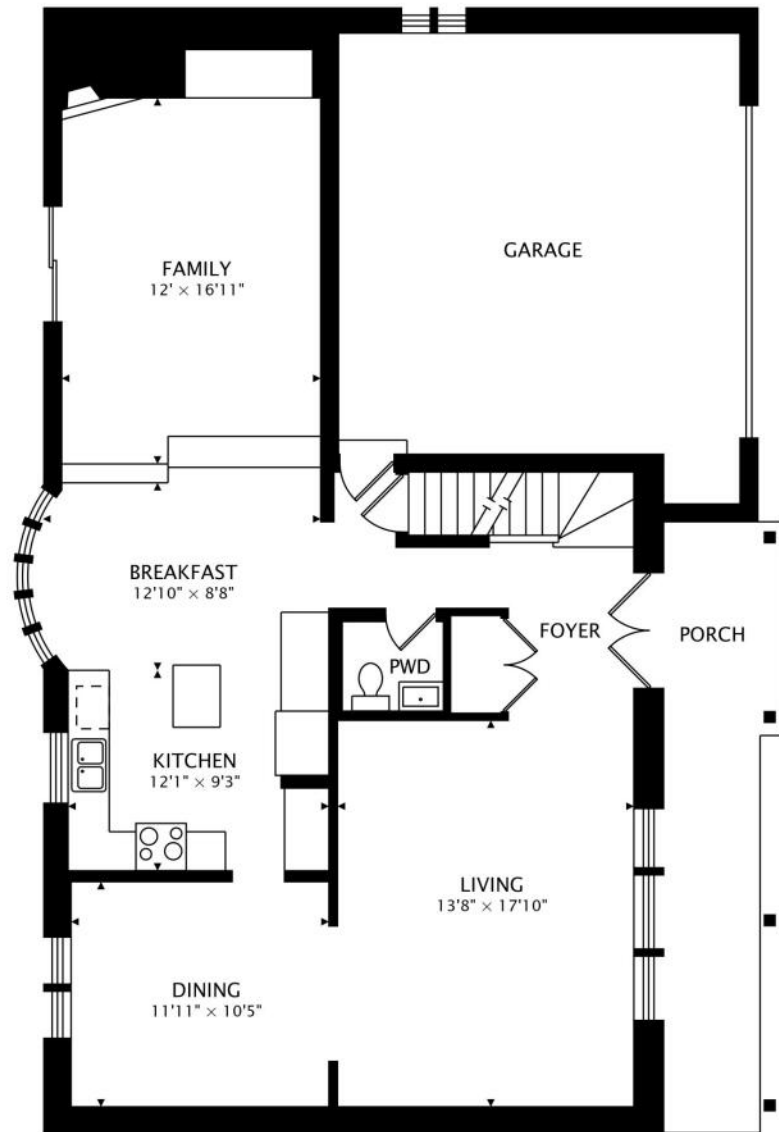
An oasis awaits in your own backyard! This beautifully maintained 4-bedroom, 2.1-bath home is truly move-in ready and designed for both comfort and style. Spacious living areas, abundant natural light, and a seamless flow make it perfect for everyday living and entertaining. The highlight is the resort-style backyard featuring a gorgeous in-ground pool, lush landscaping, and exceptional privacy. Upstairs offers generously sized bedrooms including a primary suite, while the finished basement adds valuable additional living space. A 2.5-car attached heated garage completes the home. Ideally located just 1 block from award-winning Lincoln Elementary, 3/4 mile to Sundling Middle School and Palatine High School, and steps to Cherrywood Park, with shopping, dining, and more just minutes away.



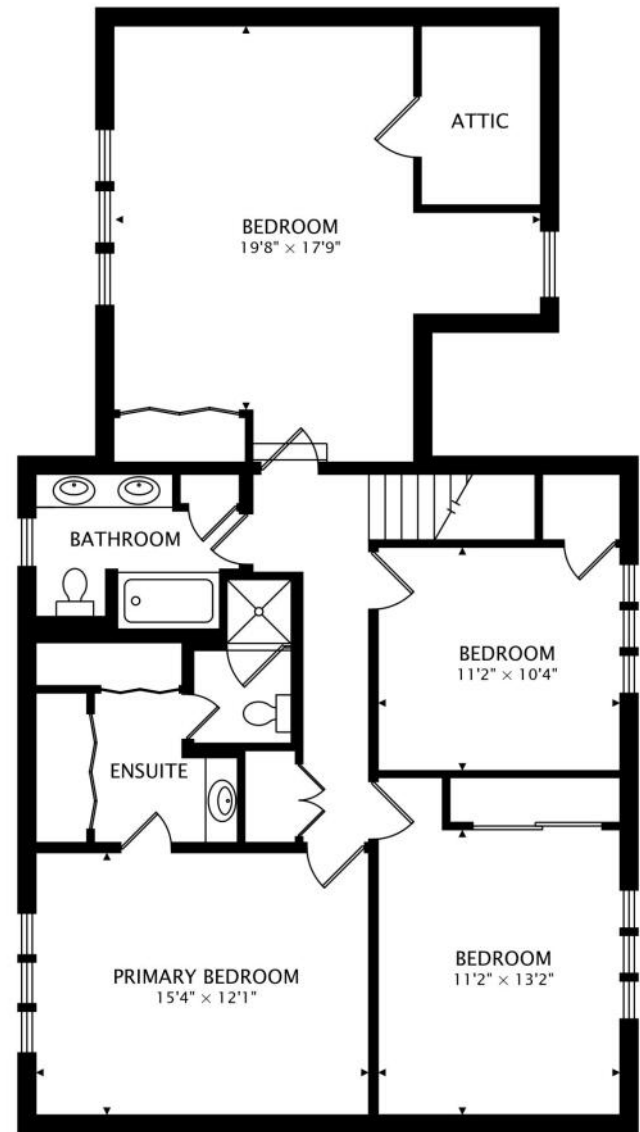




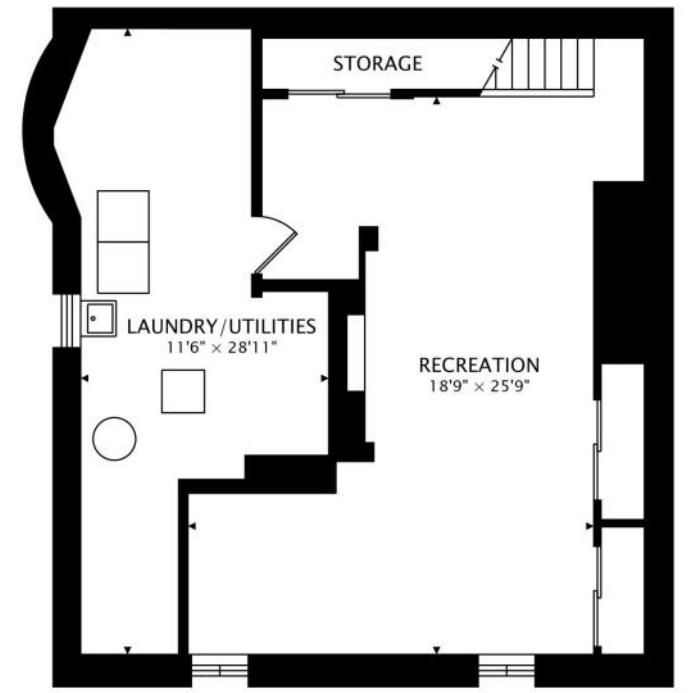




MAIN
1184 sq ft



SECOND
1302 sq ft



LOWER
874 sq ft BELOW GRADE



CRAIG TINDER

PRINCIPAL BROKER

CRAIGTINDER@ATPROPERTIES.COM

TINDERHOME.COM

847-638-5522