

310 SUNDOWN COURT, UNIT E  
WAUCONDA

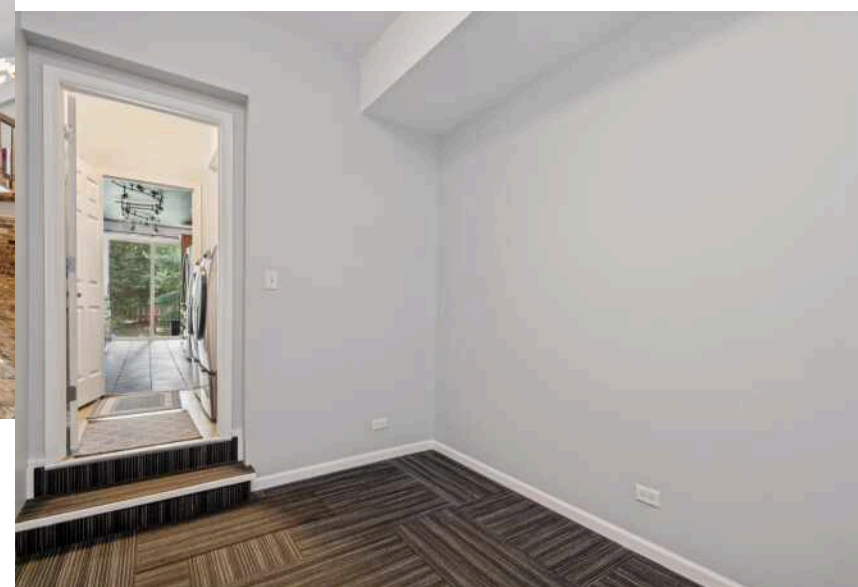
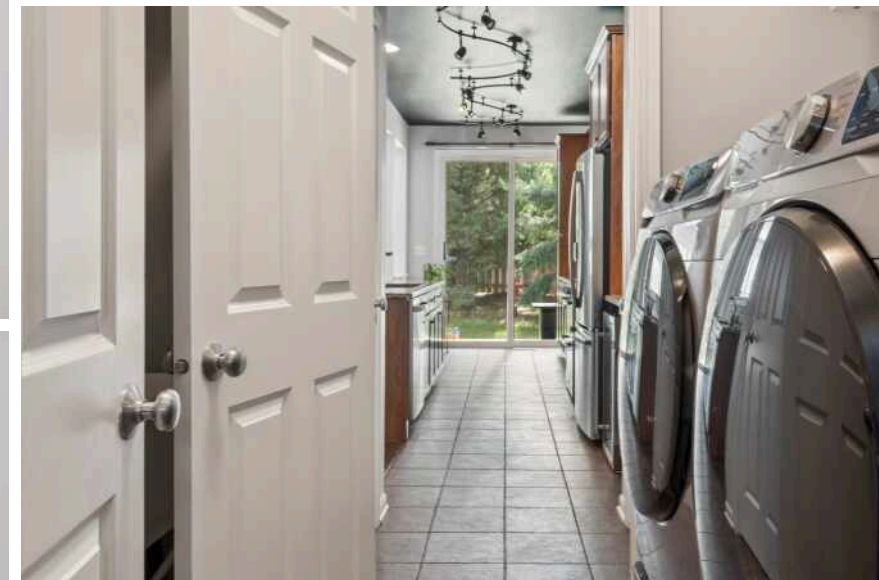




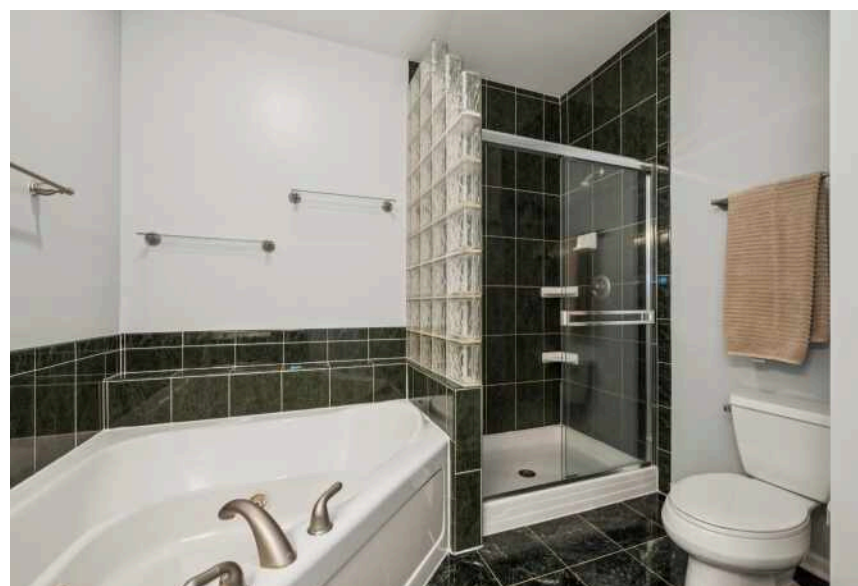
## PERFECTLY APPOINTED AND SET IN DESIRABLE SUNSET RIDGE, THIS STUNNING TOWNHOME OFFERS YEAR-ROUND RESORT-STYLE LIVING WITH BEAUTIFUL VIEWS OF BANGS LAKE!

This fabulous unit is just steps from the beach & boat slips-all in a low-maintenance setting! Featuring three levels of thoughtfully designed living space, there's plenty of room for family, friends, and entertaining. A dramatic two-story entry welcomes you into the open-concept living and dining area, where a cozy fireplace sets the mood. The dining room, accented with stylish lighting, flows seamlessly into the well-equipped kitchen with granite counters, abundant cabinetry, stainless steel appliances, beverage fridge, pantry, and a charming arched pass-through with breakfast bar. Sliding doors open to a private patio-perfect for morning coffee or evening cocktails. A flexible main-level bedroom (ideal for office or guest use), half bath, and mudroom with direct garage access complete this floor. Upstairs, retreat to the luxe primary suite with private balcony, walk-in closet, and spa-like ensuite bath. A second bedroom and full hall bath round out this level. The finished lower level is a showstopper, boasting a spacious rec area, fourth bedroom, exercise room, and full bath. Enjoy the best of lake life in this sought-after community, featuring a private beach, kayak storage, available boat slips for lease (on a first come, first serve basis), three piers, and a gazebo. All this just moments from vibrant downtown Wauconda with its dining and shopping scene, plus nearby Lake County Forest Preserves with endless hiking, biking, and walking trails. Resort living at its finest-prepare to be impressed!

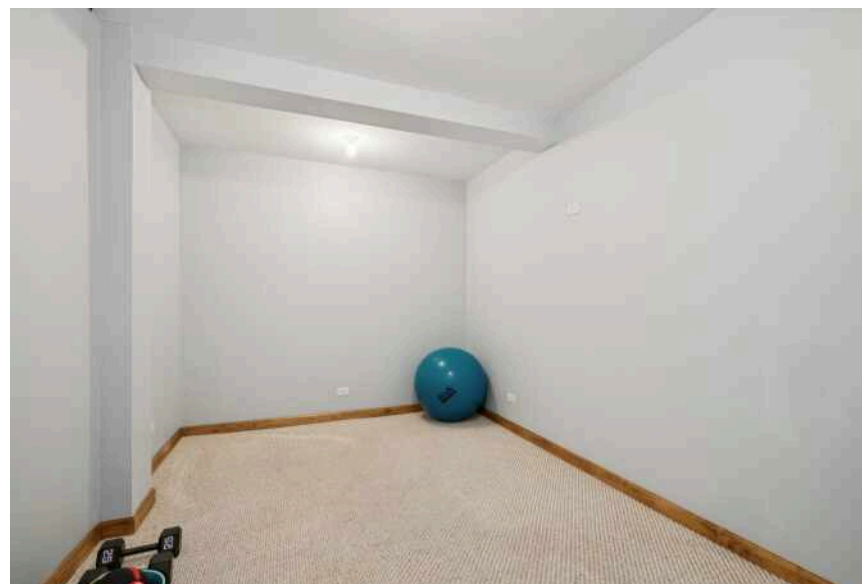




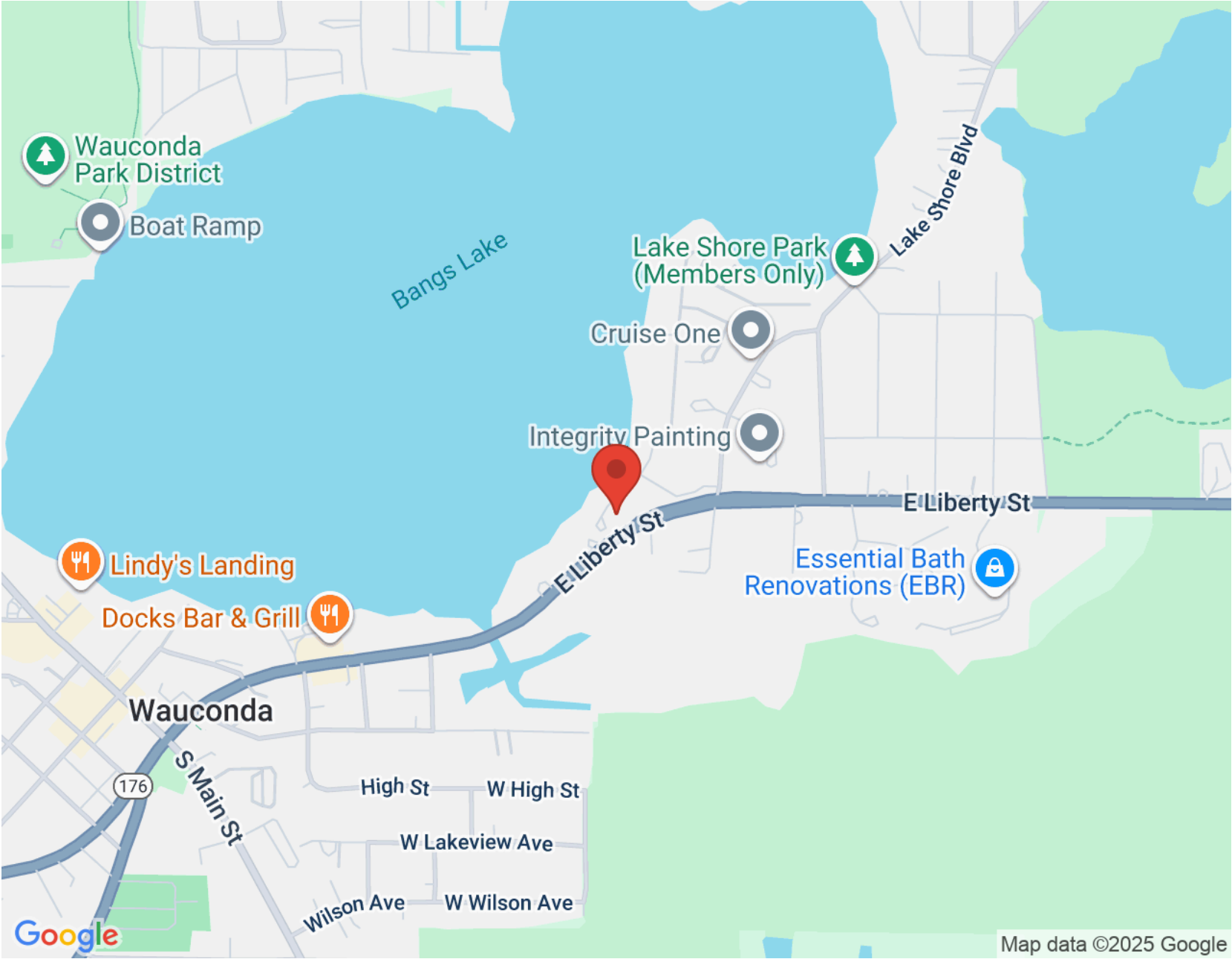














## JOHN MORRISON

(847) 409-0297

JOHN@MORRISONHOMETEAM.COM

WWW.MORRISONHOMETEAM.COM

@MORRISON\_HOME\_TEAM

