

313 E DES MOINES STREET  
WESTMONT





## TIMELESS CHARM MEETS MODERN UPDATES

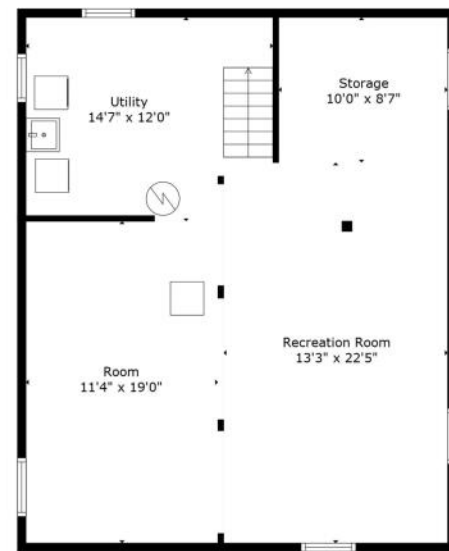
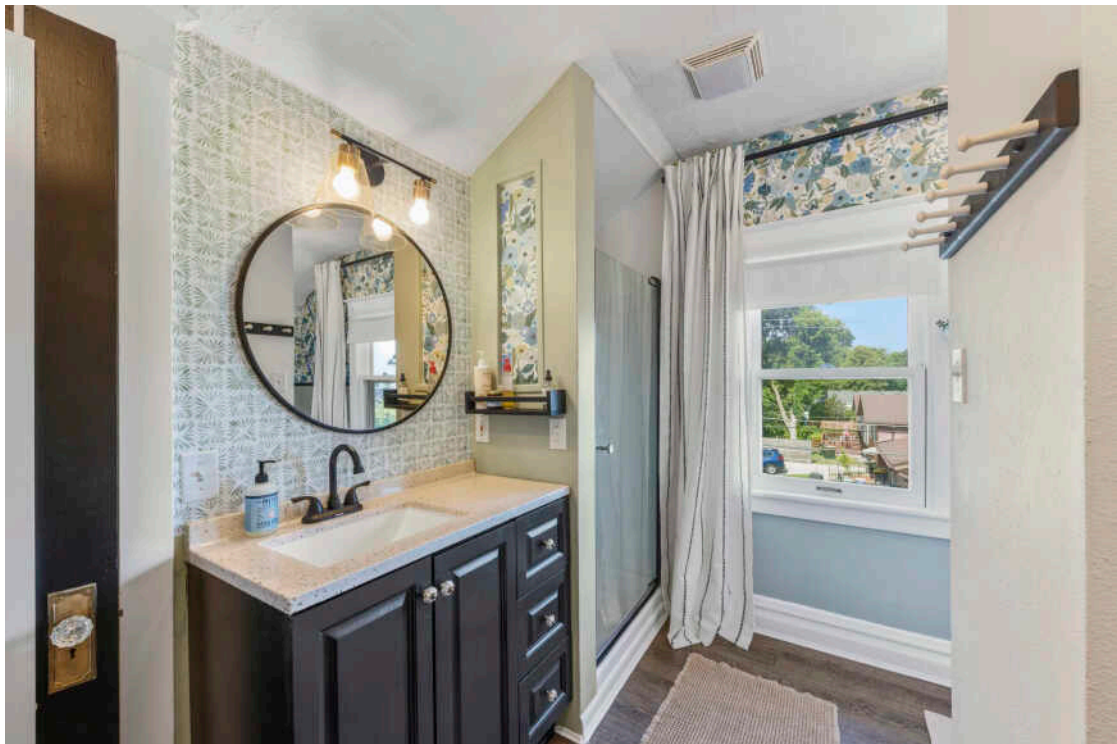
Home For The Holidays! Step inside this charming home that has been renovated and restyled from top to bottom. Set on a large 100x112 lot and less than a 15-minute walk to the Metra and downtown in both Clarendon Hills and Westmont, this is a prime location. Historical features like 9-foot ceilings, original doors and a claw foot tub blend charm with a modern and timeless kitchen, redone in 2023, including quartz countertops, a farmhouse sink, new cabinetry and new stainless appliances. Both baths were remodeled in 2021. New furnace and a/c (2019), new hot water heater (2023), new washer (2025), new attic insulation (2024) and new garage roof, eaves and soffits (2023). Don't miss the coveted first floor bedroom and full bath, cozy enclosed porch, large entry foyer, hardwood floors on the first floor, new electric fireplace, a separate dining room with tray ceiling and canned lighting in the dining room and kitchen. The full finished basement provides plenty of additional living space and storage. The big backyard features a deck perfect for relaxing, a swing set and a firepit area with room for seating. No detail was missed in this well designed home... All you have to do is move in. Welcome Home!

3 BEDROOM  
2 BATH  
TAXES: \$6,578





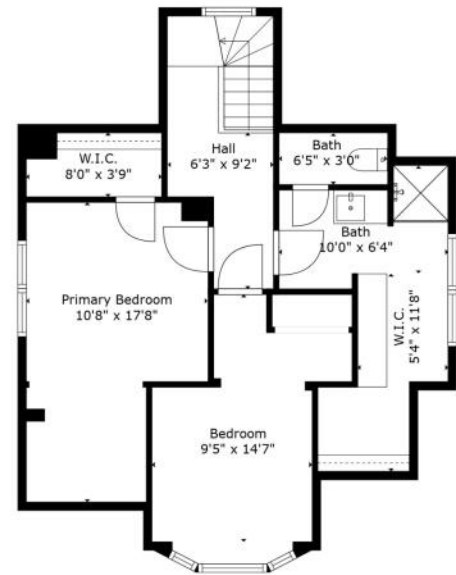




Floor 1



Floor 2



Floor 3

**Total GLA: 1415 sq. ft | Total: 2402 sq. ft**  
 Floor 1 - Below grade: 503 sq. ft (Excluded areas 325 sq. ft)  
 Floor 2: 845 sq. ft (Excluded areas 89 sq. ft)  
 Floor 3: 570 sq. ft (Excluded areas 70 sq. ft)

Sizes And Dimensions Are Approximate. Actual May Vary.





IN THE IMMORTAL WORDS OF BLUES  
LEGEND MUDDY WATERS, YOU MIGHT SAY  
**WESTMONT** HAS GOT ITS “MOJO  
WORKING.”

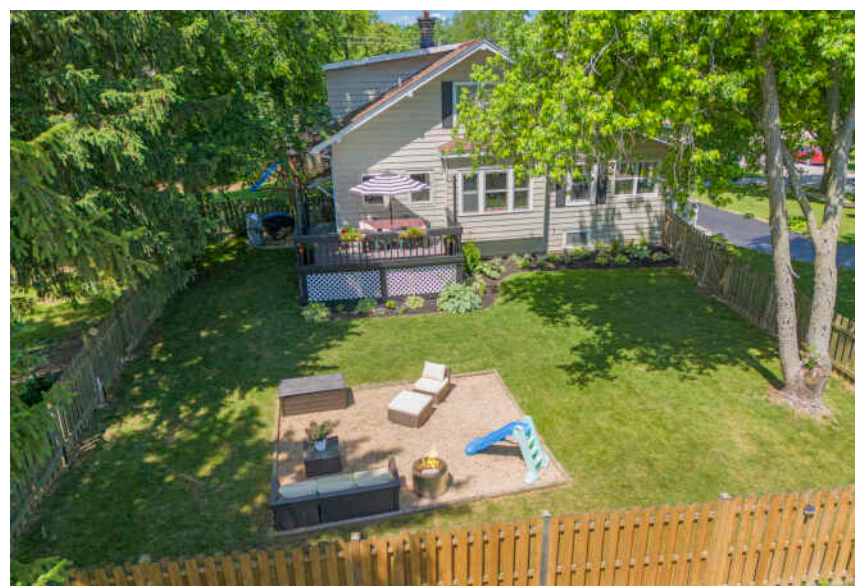
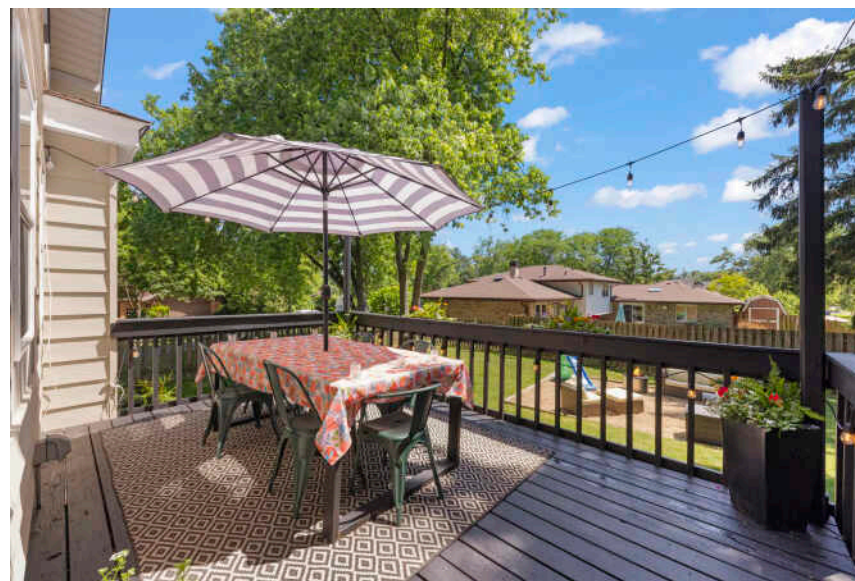
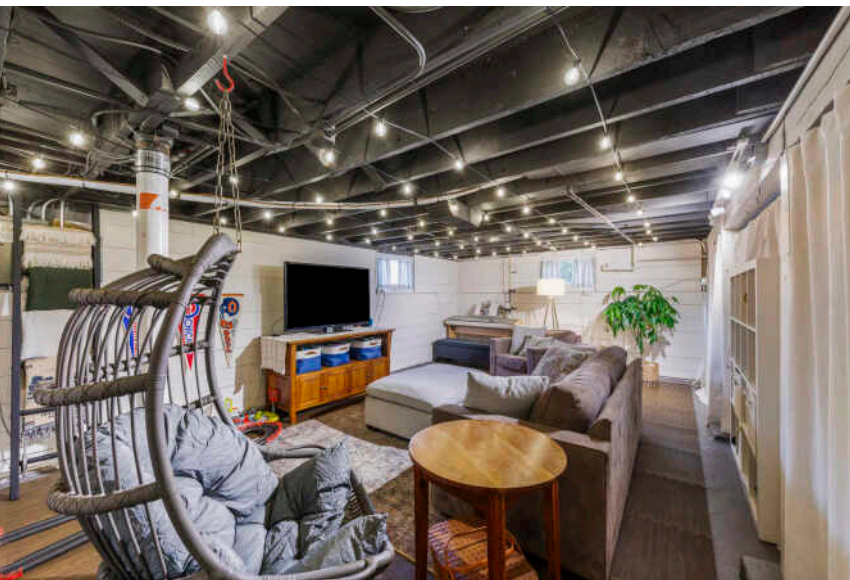
The “father of modern Chicago blues” lived here for more than a decade until his death. A street near his former home is named “Honorary Muddy Waters Way.”

The suburb has grown significantly thanks to its proximity to all that Chicago has to offer. Residents enjoy a suburban lifestyle and easy commute downtown. Convenient Metra service is available at the Westmont Station on the BNSF Railway.

Westmont has nearly 18 parks with numerous Westmont Park District facilities including space for bocce ball, tennis and basketball courts, and soccer and baseball fields. Additional park features include paths, playgrounds, and picnic areas.

The DuPage County village also boasts a number of highly-regarded restaurants as well as retailers and fine arts.





## NOTES

10 313 E DES MOINES STREET

313 E DES MOINES STREET 11



## SAMANTHA SCHROEDER

708-712-0727

SAM@SAM-SCHROEDER.COM

WWW.SAM-SCHROEDER.COM

*Samantha*  
SCHROEDER



All specifications, features, designs, price, assessments, taxes and materials are subject to change without notice. Depicted floor plans and architectural renderings are only an artist's impression.

