



314 W 2ND STREET
HINSDALE



314 W 2ND STREET · HINSDALE

@properties | CHRISTIE'S
INTERNATIONAL REAL ESTATE

LP LUXURY
PORTFOLIO
INTERNATIONAL



BRYAN BOMBA BROKER

630.286.9242 mobile
bbomba@atproperties.com
www.bombamancini.com

BOMBA & MANCINI



PAUL MANCINI BROKER

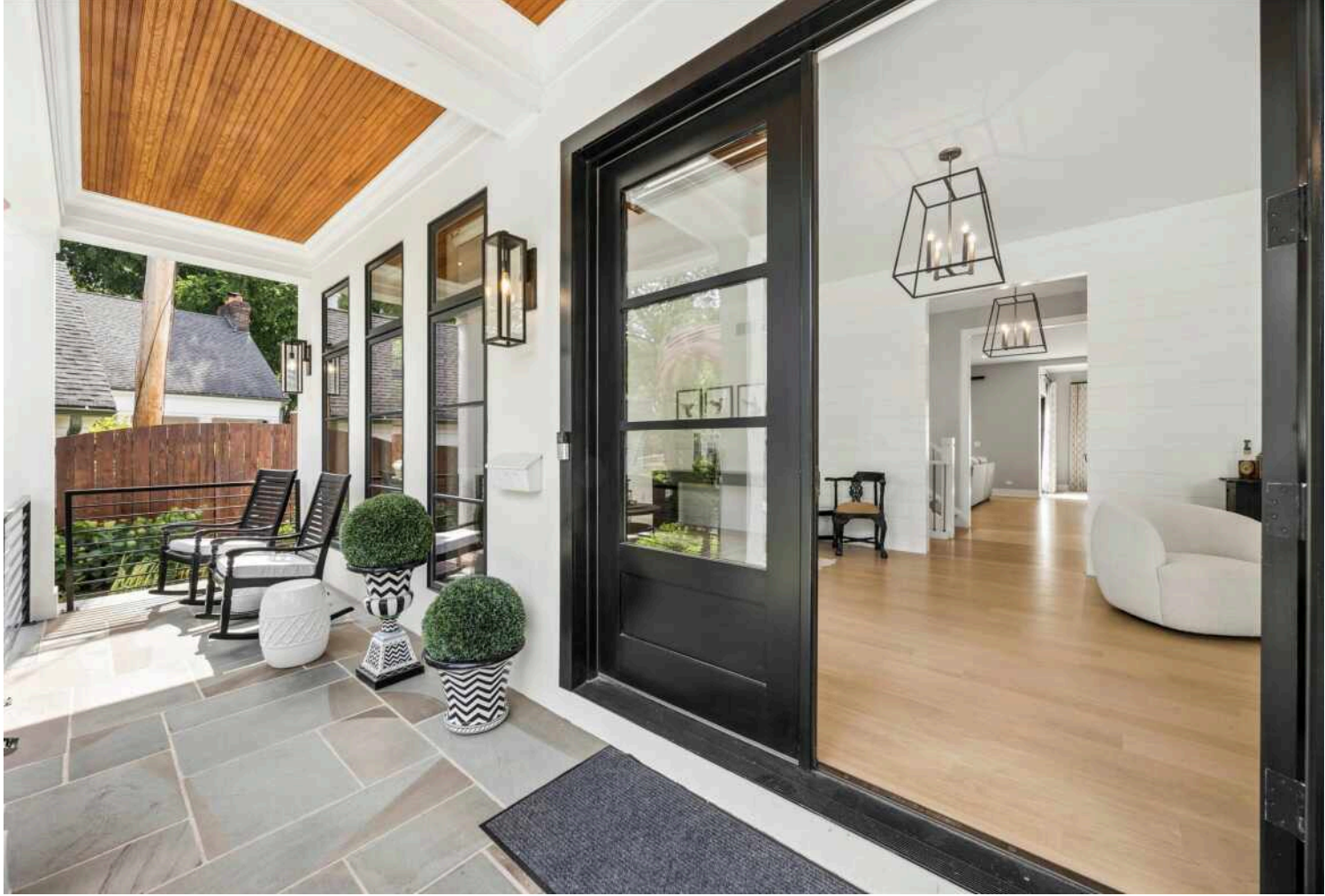
630.267.1899 mobile
pmancini@atproperties.com
www.bombamancini.com

314 W 2ND STREET · HINSDALE



@properties | CHRISTIE'S
INTERNATIONAL REAL ESTATE

LP LUXURY
PORTFOLIO
INTERNATIONAL



314 W 2ND STREET MODERN MASTERPIECE MEETS A WALK-TO-EVERYTHING LIFESTYLE

ROOM DIMENSIONS

Living Room	36'x14'
Kitchen	15'x23'
Dining Area	15'x12'
Family Room	17'x18'
Mud Room	9'x17'
Primary Bedroom	23'x18'
Bedroom Two	17'x13'
Bedroom Three	14'x14'
Bedroom Four	13'x14'
Bedroom Five	27'x28'
Bedroom Six	14'x20'
Laundry Room	7'x7'
Recreation Room	38'x27'

FEATURES

Architecture meets artistry in this Byrne-built masterpiece, where clean-lined innovation merges with a coveted walk-to-everything lifestyle. Beyond the understated facade, soaring volumes and wide-plank hardwoods set a sophisticated stage for an effortless flow. The culinary suite-anchored by high-sheen cabinetry, Calcutta quartz, and professional-grade Sub-Zero/Wolf appliances-dissolves into a glass-walled family room and a manicured bluestone terrace, perfect for twilight entertaining. Ascend to the primary sanctuary, a study in tranquility featuring a hotel-caliber wet room with a dual shower and deep soaking tub. The expansive lower level caters to the collector and host alike, boasting a brick-accented lounge, curated bar, and private guest quarters. Finished with polished hardware and bespoke shiplap detailing, this residence is a masterclass in modern craftsmanship for the discerning urbanite.



BRYAN BOMBA BROKER

630.286.9242 mobile
bbomba@atproperties.com
www.bombamancini.com



PAUL MANCINI BROKER

630.267.1899 mobile
pmancini@atproperties.com
www.bombamancini.com

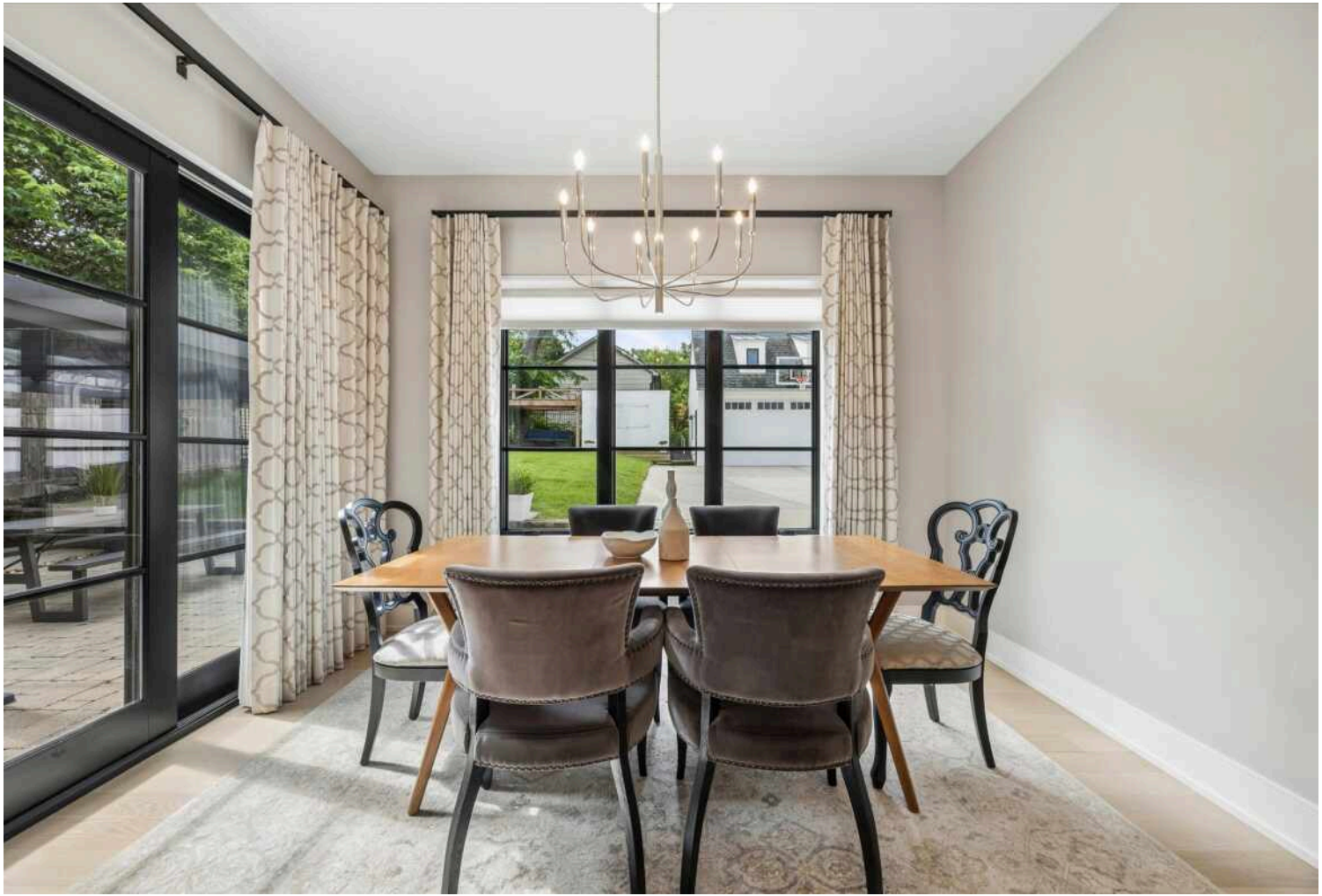








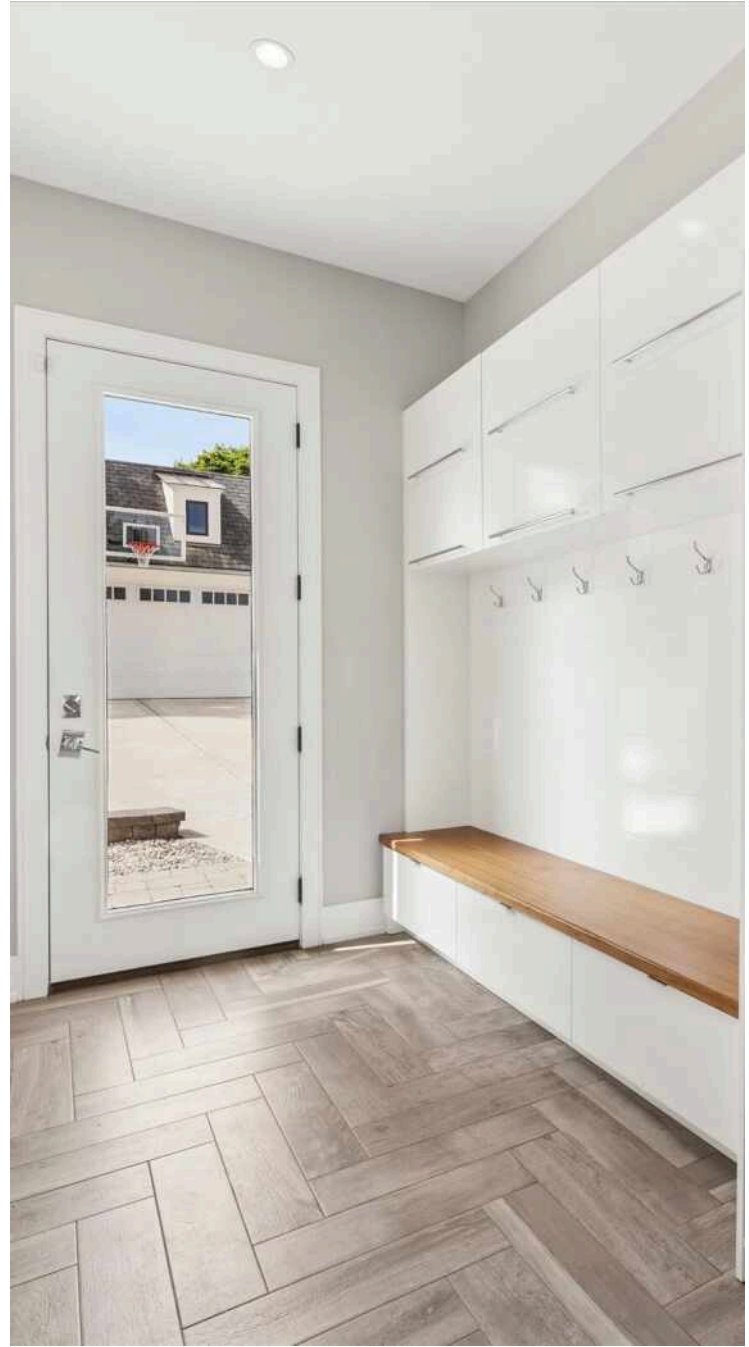




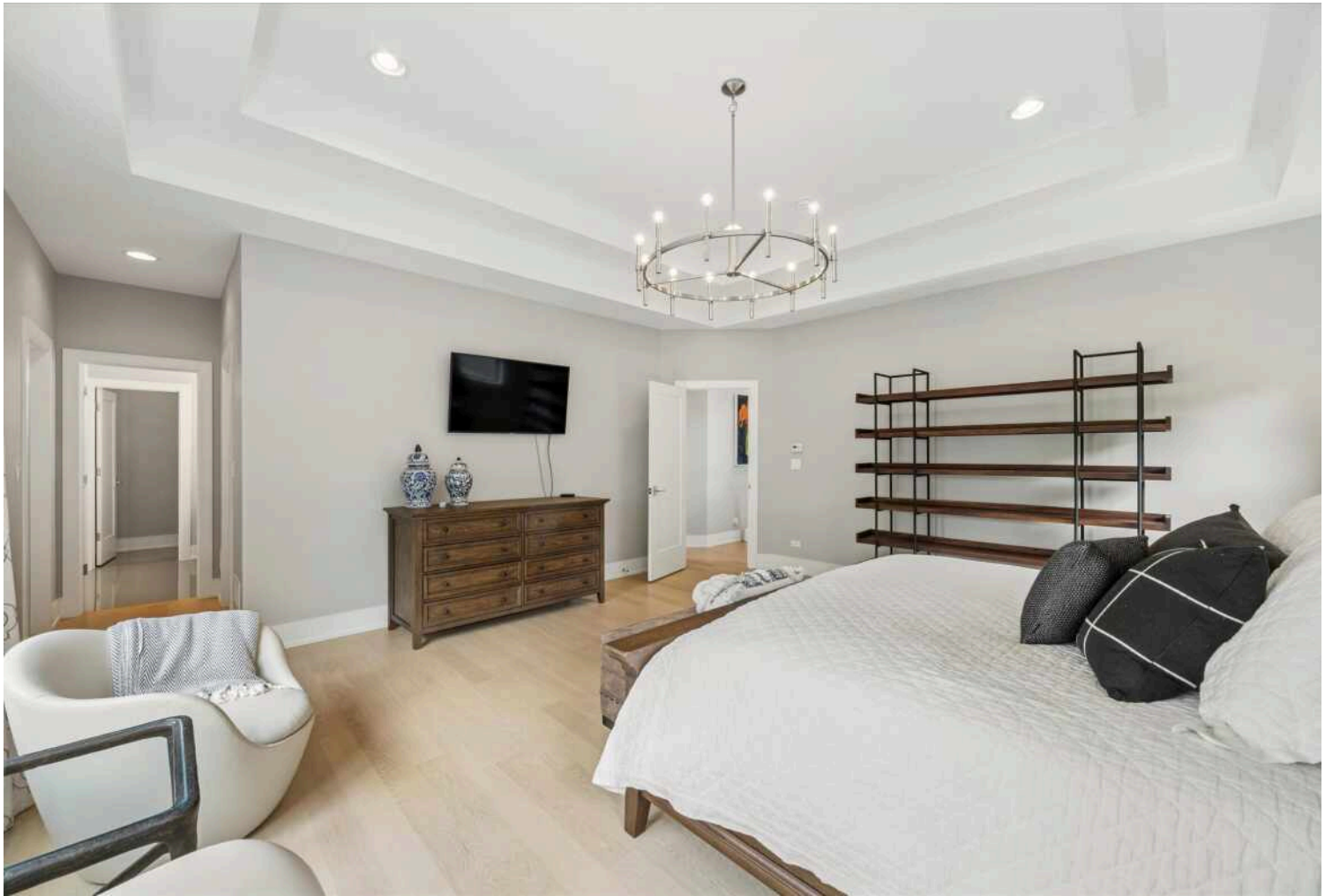










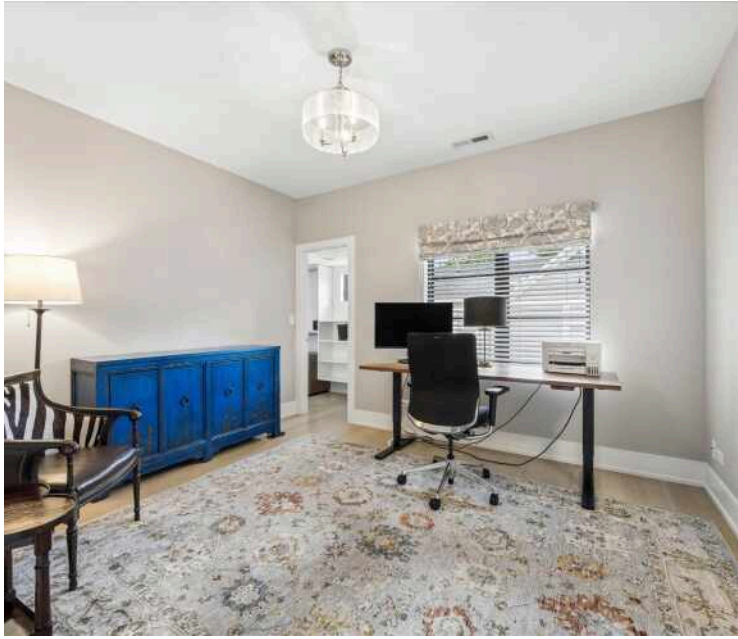


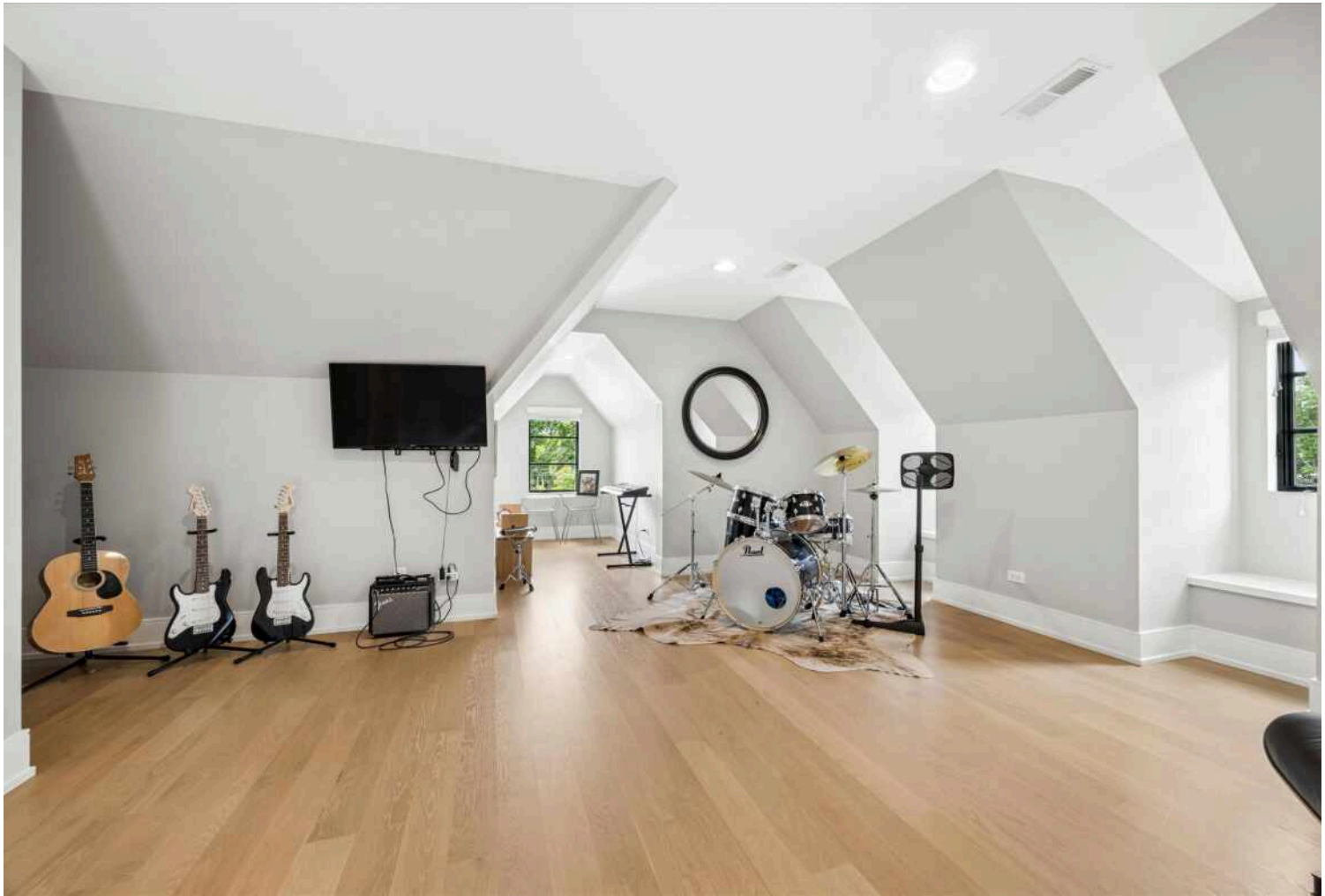






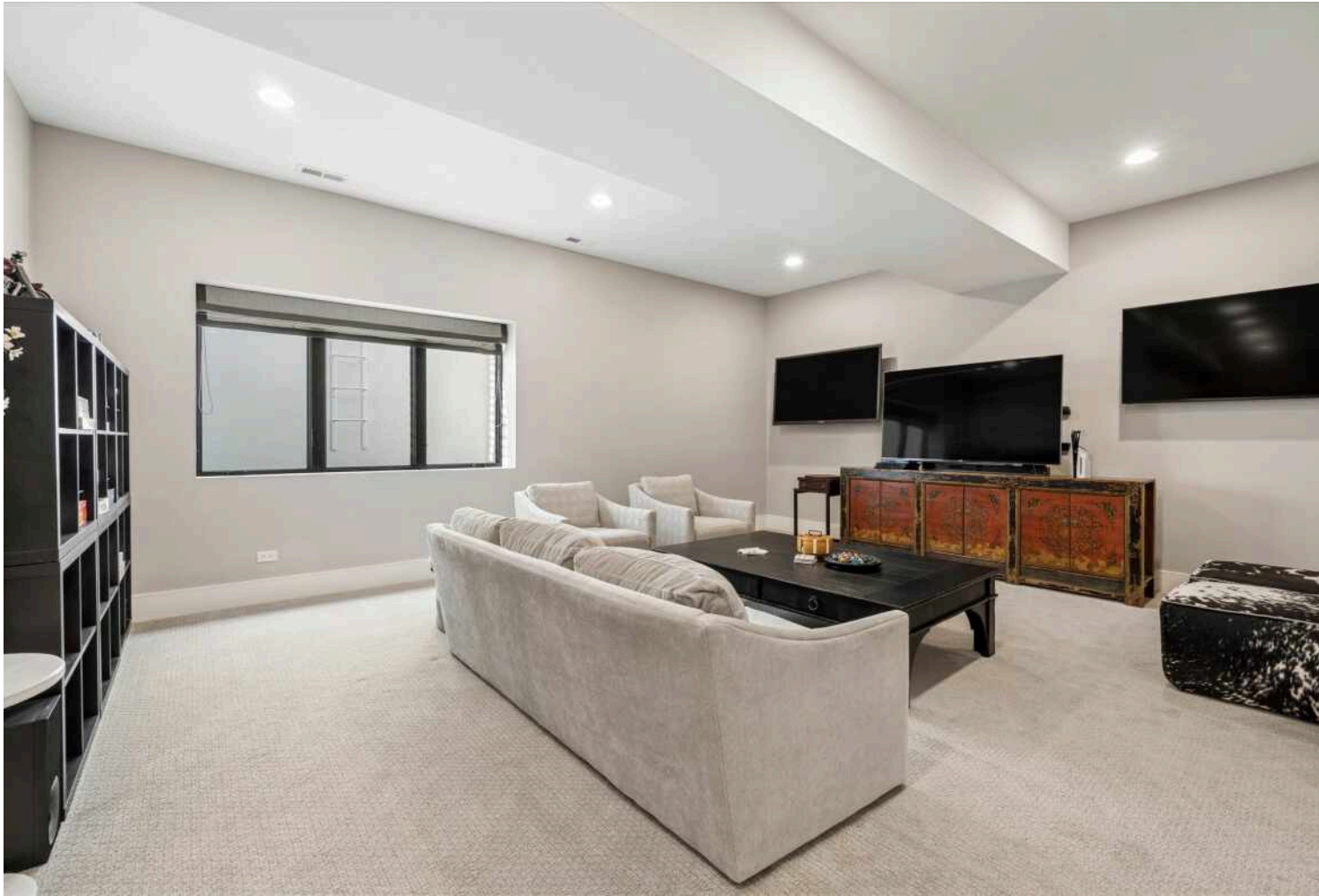


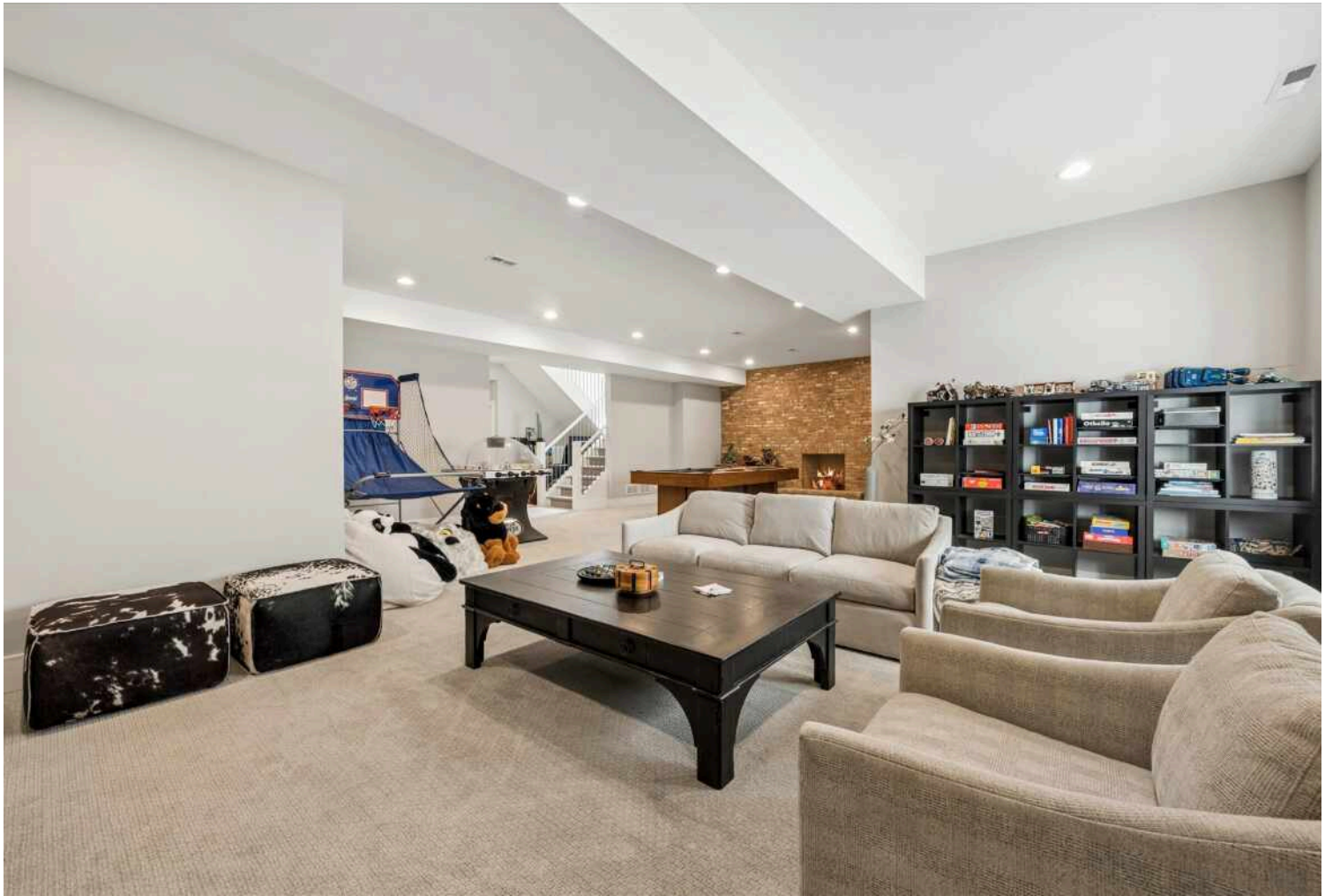










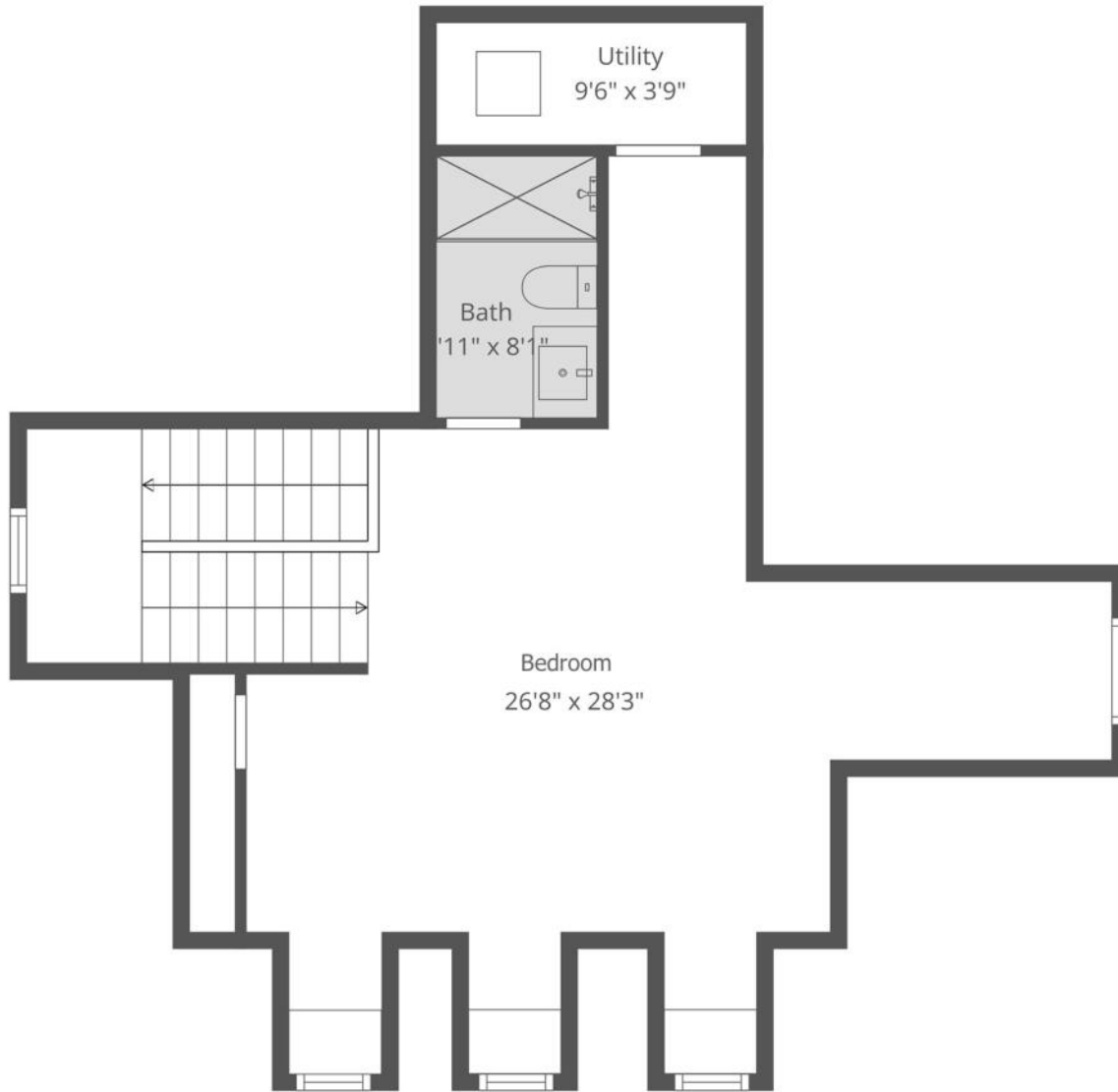


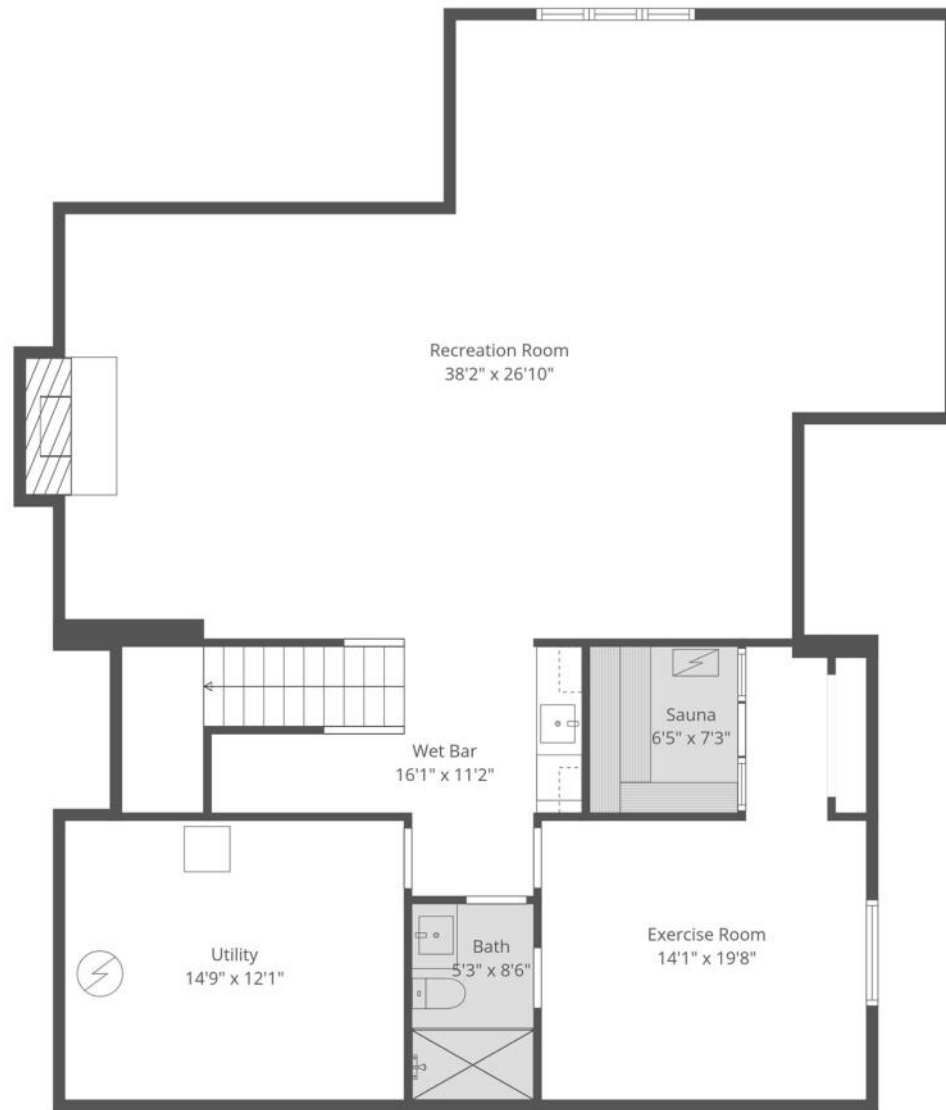


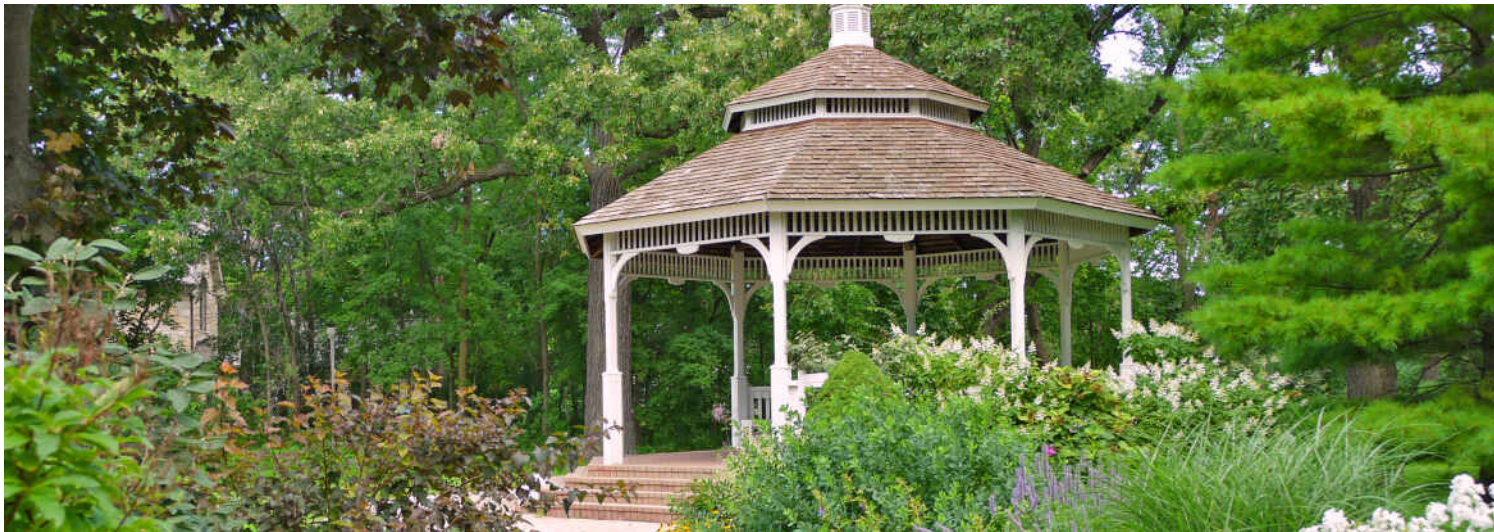












HINSDALE'S HISTORIC DOWNTOWN AND BEAUTIFUL HOMES ATTRACT SOME OF THE STATE'S MOST AFFLUENT RESIDENTS, EARNING THE SUBURB ITS RANKING AS ONE OF THE WEALTHIEST ZIP CODES IN ILLINOIS.

Locals love the natural beauty and historic elegance of Hinsdale, which boasts a number of scenic parks and architectural landmarks.

Downtown Hinsdale offers a step back in time. The downtown district is on the National Register of Historic Places, with several historic buildings dating back to before the community was incorporated in the 1870s. Residents and visitors will also find award-winning restaurants that will satisfy any palate along with a variety of shops, from jewelry stores and upscale boutiques to craft shops and more.

The community has a wealth of amenities such as the Hinsdale Community Swimming Pool, Katherine Legge Memorial Park, and Burlington Park, which is home to various annual events including the farmers market, Fine Arts Festival, and Uniquely Thursdays concert series. There are also numerous parks and athletic facilities for those who enjoy sports like tennis, baseball, and soccer.

Hinsdale has easy access to the Tri-State Tollway, Stevenson Expressway, and three train stations along Metra's BNSF Railway.





@properties® | CHRISTIE'S
INTERNATIONAL REAL ESTATE

Leading REAL ESTATE
COMPANIES
OF THE WORLD®

LP
LUXURY
PORTFOLIO
INTERNATIONAL

