

3160 N WOLF ROAD
MELROSE PARK, IL 60164





ROOM DIMENSIONS

LIVING ROOM : 22' × 16'

FAMILY ROOM : 22' × 17'

KITCHEN : 23' × 11'

PRIMARY BEDROOM : 19' × 13'

SECOND BEDROOM : 10' × 9'

THIRD BEDROOM : 11' × 10'

FOURTH BEDROOM : 11' × 9'

LAUNDRY ROOM : 9' × 6'

BIGGER THAN IT LOOKS!

Don't let the front appearance of this home deceive you, this is not a small house. You already read it, it offers FOUR bedrooms, TWO full baths, with a MAIN FLOOR FAMILY ROOM.

Take a closer look at the sizes of the front living room, the primary bedroom, the main floor family room, and the kitchen.

Current owner of more than 30 years is ready to pass this house to a new owner to love and care for.

- Not your average layout house on a generous lot size too, at 13,173 square feet, a one third acre of land.
- Plenty of space to live, work and play.
- Large covered concrete patio and parking spaces galore. Don't miss it.
- Low, low, low real estate taxes!
- Great location, with city access to everything you could need.
- For a private tour call today.



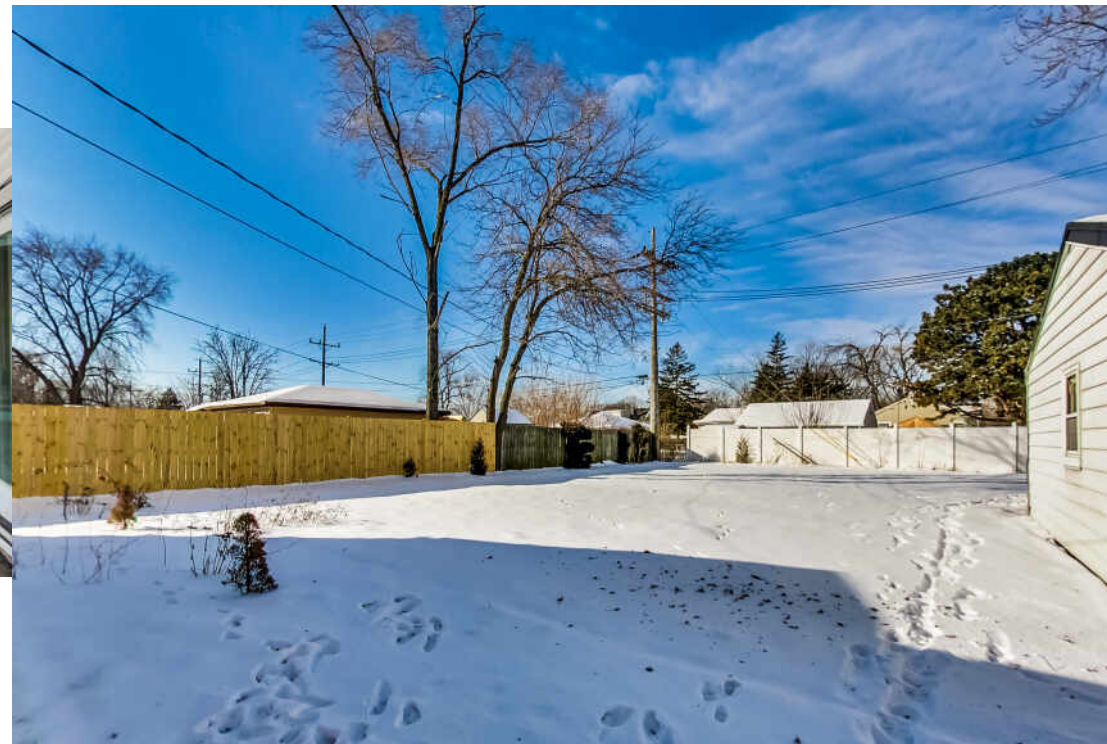
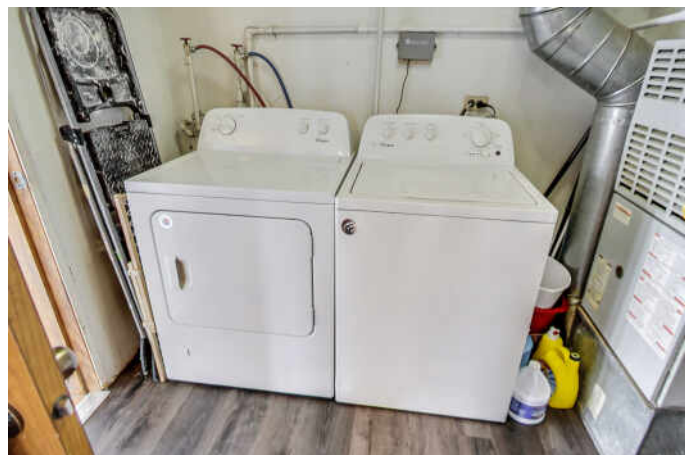
4 BEDROOM

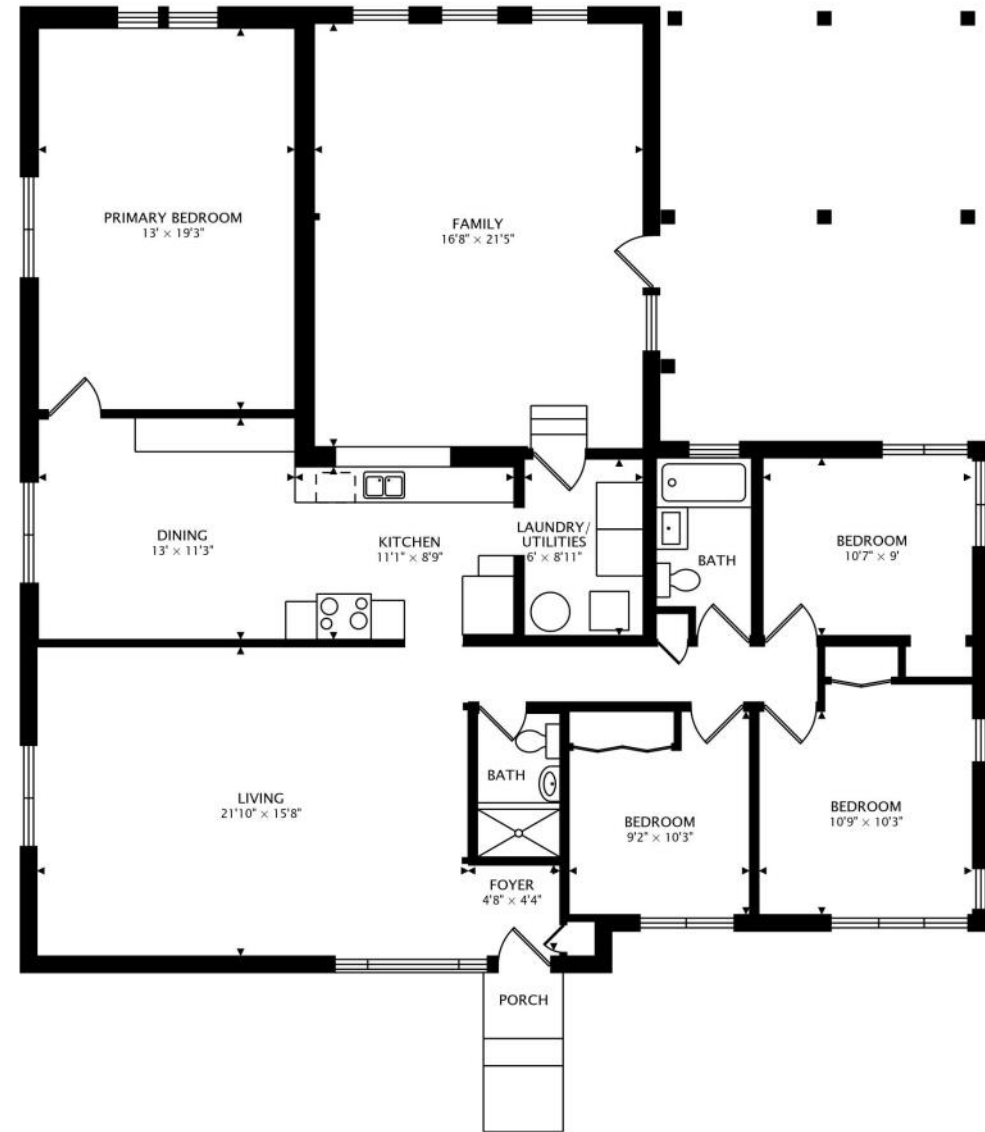
2 BATH

TAXES: \$2,717









1981 sq ft

NOTES _____



EVA SANCHEZ, REALTOR®

I LOVE TAKING YOU TO YOUR NEXT HOME!

CALL OR TEXT: (630) 561-8742

SEND AN EMAIL: [SEYOURHOUSE@OUTLOOK.COM](mailto:SEEYOURHOUSE@OUTLOOK.COM)

VISIT MY WEB PAGE: WWW.SEEYOURHOUSERIGHTHERE.COM



CHRISTIE'S
INTERNATIONAL REAL ESTATE

3160NWOLFROAD.INFO