

3172 EASTBANK CIRCLE, MUNDELEIN
GRAND DOMINION





ROOM DIMENSIONS

KITCHEN : 13' × 10'

LIVING ROOM : 21' × 15'

DINING ROOM : 15' × 11'

PRIMARY BEDROOM : 15' × 12'

SECOND BEDROOM : 12' × 11'

2 BEDROOM

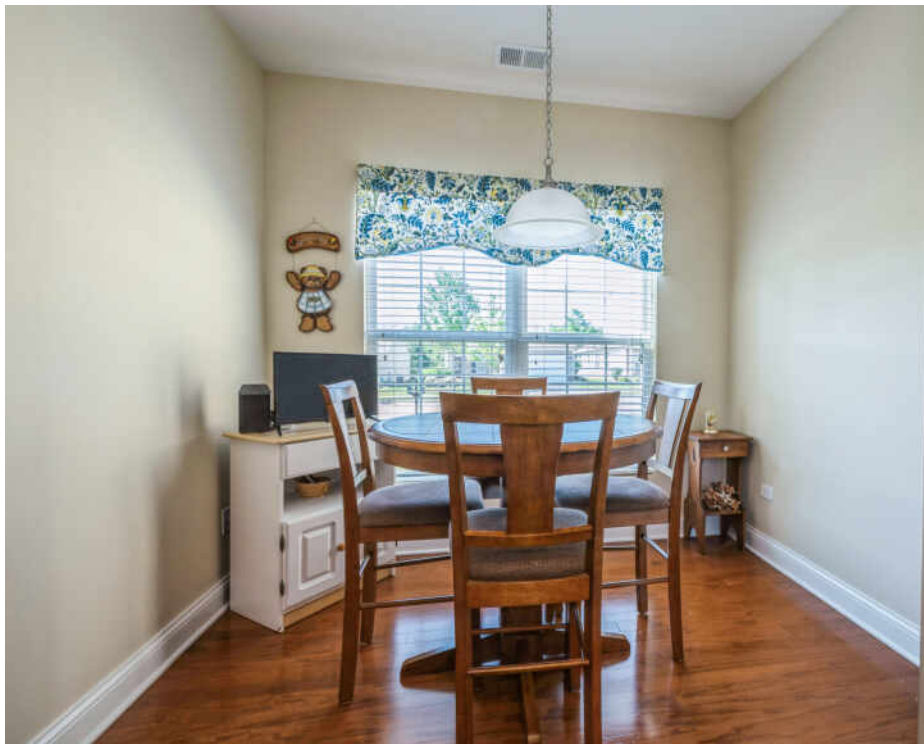
2 BATH

TAXES: \$10,297

ASSESSMENTS: \$296 / MONTH

OPEN CONCEPT LIVING

Enjoy all the wonderful amenities that Grand Dominion has to offer - indoor and outdoor swimming pools, fitness center, recreational facility, tennis, pickleball and bocce ball courts and miles of walking and biking paths through acres of open space and around Lake Dominion all at a very affordable entry level price. Live comfortably in this 2 bedroom, 2 bath, ranch home with generous living room/dining room combo, ample sized kitchen with eating area and pantry, laundry room with utility sink, 2 car attached garage with additional attic storage and outdoor patio. The primary bedroom has a large walk-in closet and a primary bath with dual sink vanity and walk-in shower. The second full bath is located in close proximity to the second bedroom making it ideal for visiting guests. Lawn care and snow removal is taken care of for you so you can come and go as you please, worry-free.







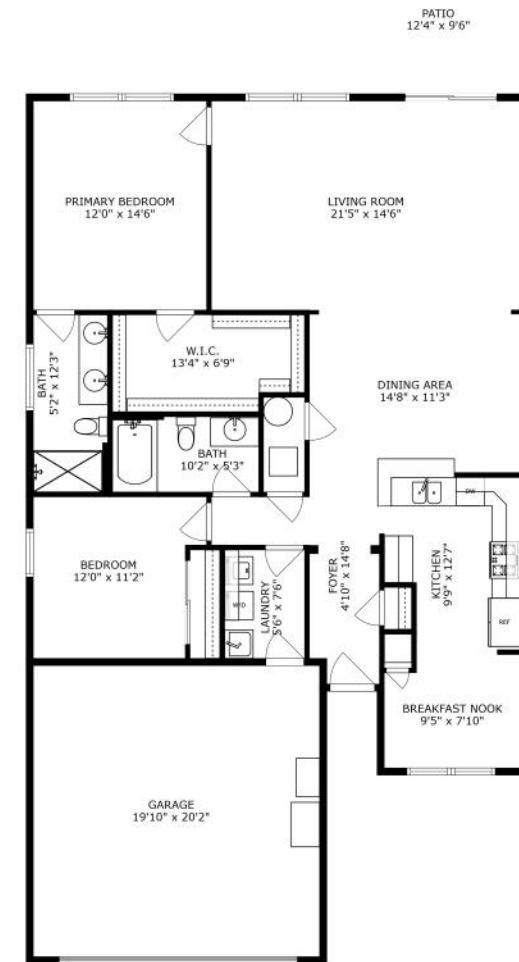
LOCATED IN THE HEART OF LAKE COUNTY,
MUNDELEIN IS A THRIVING COMMUNITY
THAT CONTINUES TO GROW DUE TO ITS
ABUNDANT RECREATIONAL
OPPORTUNITIES, FRIENDLY COMMUNITY,
AND CONVENIENT TRANSPORTATION
OPTIONS.

Mundelein celebrates its history with a popular annual festival that includes musical performances, a parade, carnival, car show, fireworks, and more. The village also has a craft beer festival, farmers market, and an art festival.

Once a popular resort area for city dwellers looking to escape the heat, Diamond Lake remains one of the village's gems. The recreation area, one of 33 in the community, stretches over 100 acres with a pristine lake, sandy beaches, and shaded picnic areas as well as a floating sports park, paddle boat, and kayak rentals.

In addition to the beach, residents can enjoy a golf course, bike trails, community theater, and museum. The village's downtown area has been redeveloped and there are various commercial areas.

Residential areas include a diverse mix of housing styles including new construction and mixed-use developments.



SIZES AND DIMENSIONS ARE APPROXIMATE, ACTUAL MAY VARY.



TERRY WILKOWSKI

REAL ESTATE BROKER

DIRECT: (847) 682-1549

TWILKOWSKI@ATPROPERTIES.COM



MARY GIBBS-MOODHE

REAL ESTATE BROKER

DIRECT: (847) 902-3357

MGIBBS@ATPROPERTIES.COM

