



317 OLMSTED ROAD  
RIVERSIDE

317 OLMSTED ROAD · RIVERSIDE



**KATHY LAUDANDO** BROKER

708.473.0824 mobile  
847.692.5522 office  
kathylaudando@atproperties.com

@properties | CHRISTIE'S  
INTERNATIONAL REAL ESTATE

LP LUXURY  
PORTFOLIO  
INTERNATIONAL

317 OLMSTED ROAD • RIVERSIDE



@properties | CHRISTIE'S  
INTERNATIONAL REAL ESTATE

LP LUXURY  
PORTFOLIO  
INTERNATIONAL



FOYER

## 317 OLMSTED ROAD CHARACTER, SPACE & ENDLESS POSSIBILITIES AWAIT

### FEATURES

Welcome home to this charming 5-bedroom, 3.5-bath residence in historic Riverside, featuring spacious living areas, a dedicated office, bonus room, and versatile lower-level living space with a private entrance. Enjoy the perfect blend of character, comfort, and flexibility in one of the area's most sought-after communities.



**KATHY LAUDANDO** BROKER

708.473.0824 mobile  
847.692.5522 office

[kathylaudando@atproperties.com](mailto:kathylaudando@atproperties.com)











POWDER

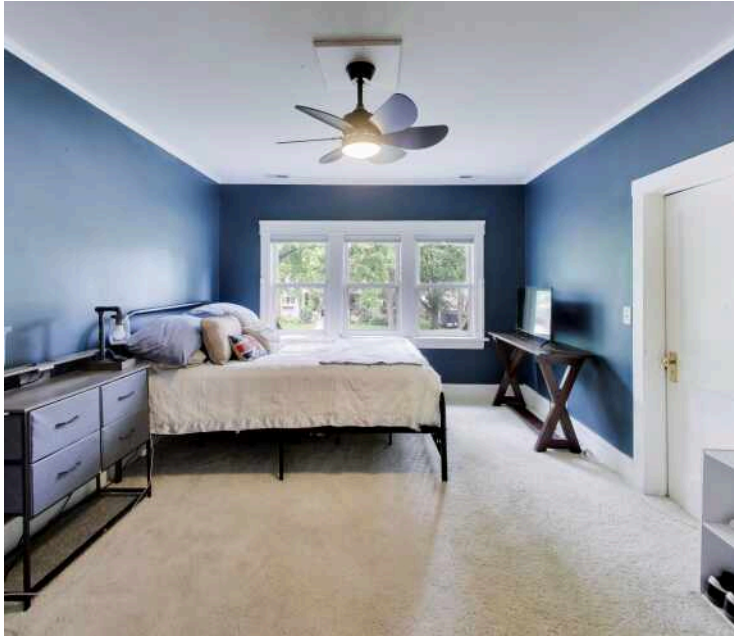


OFFICE



MUDROOM





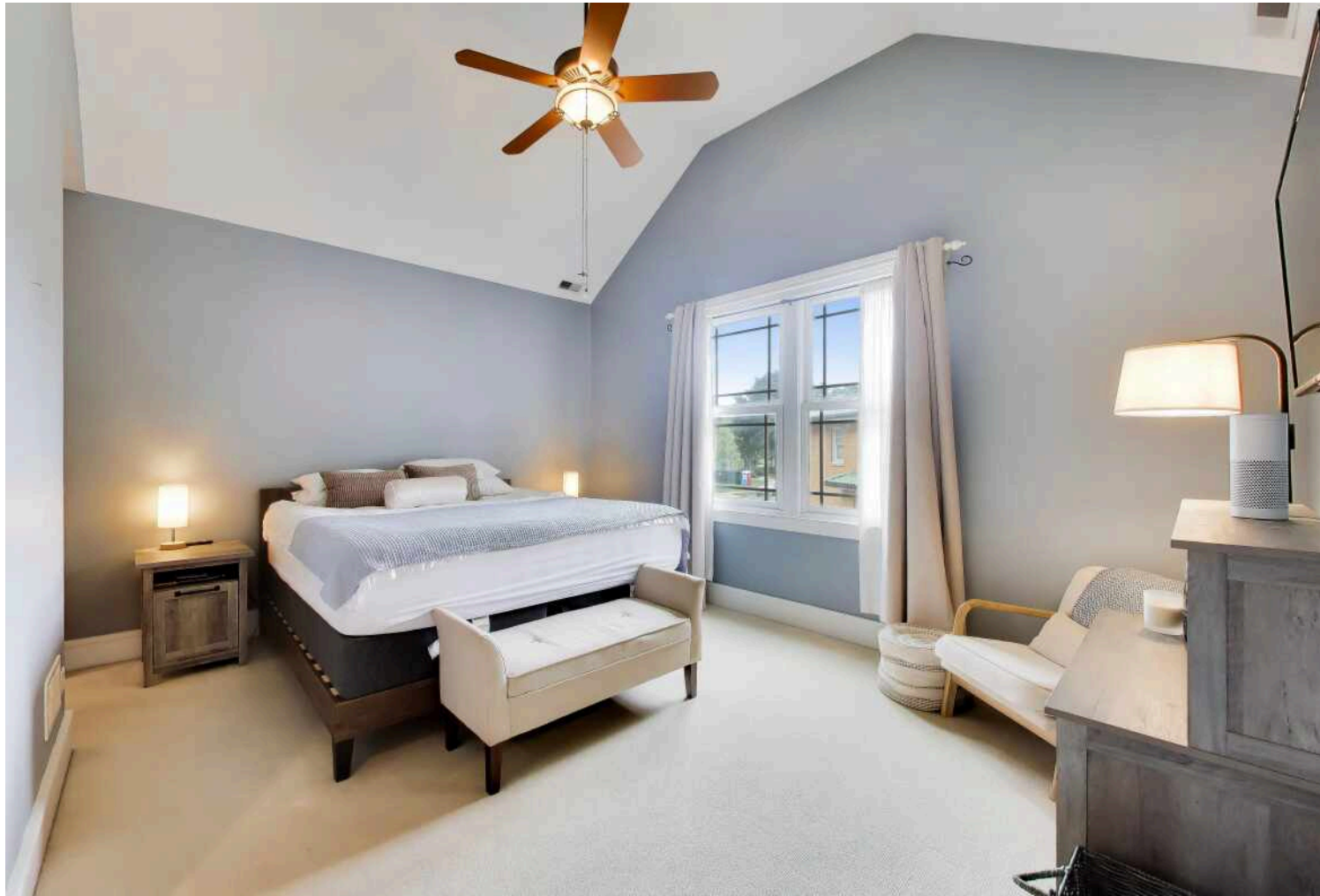
BEDROOM



BEDROOM



BEDROOM





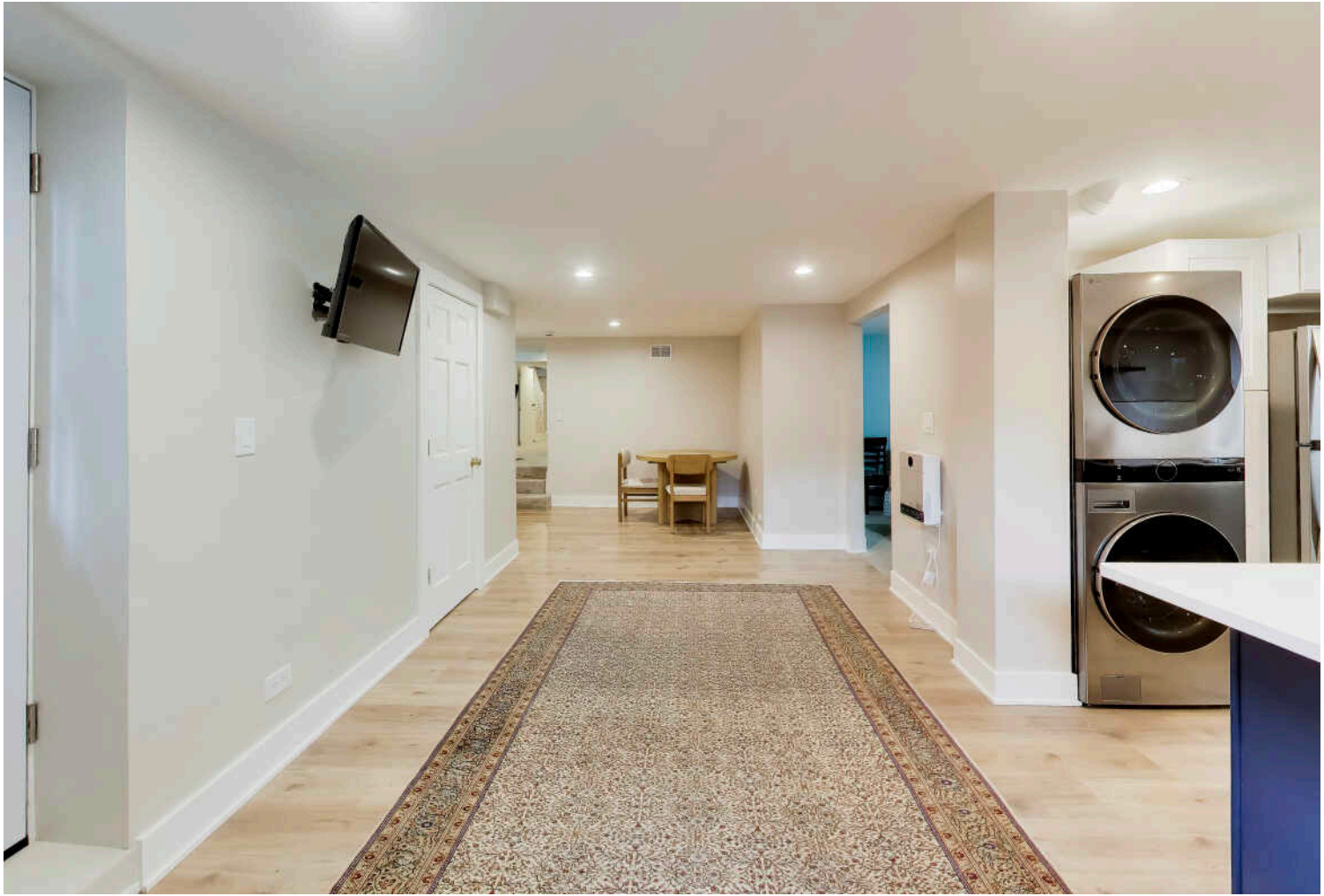
ENSUITE





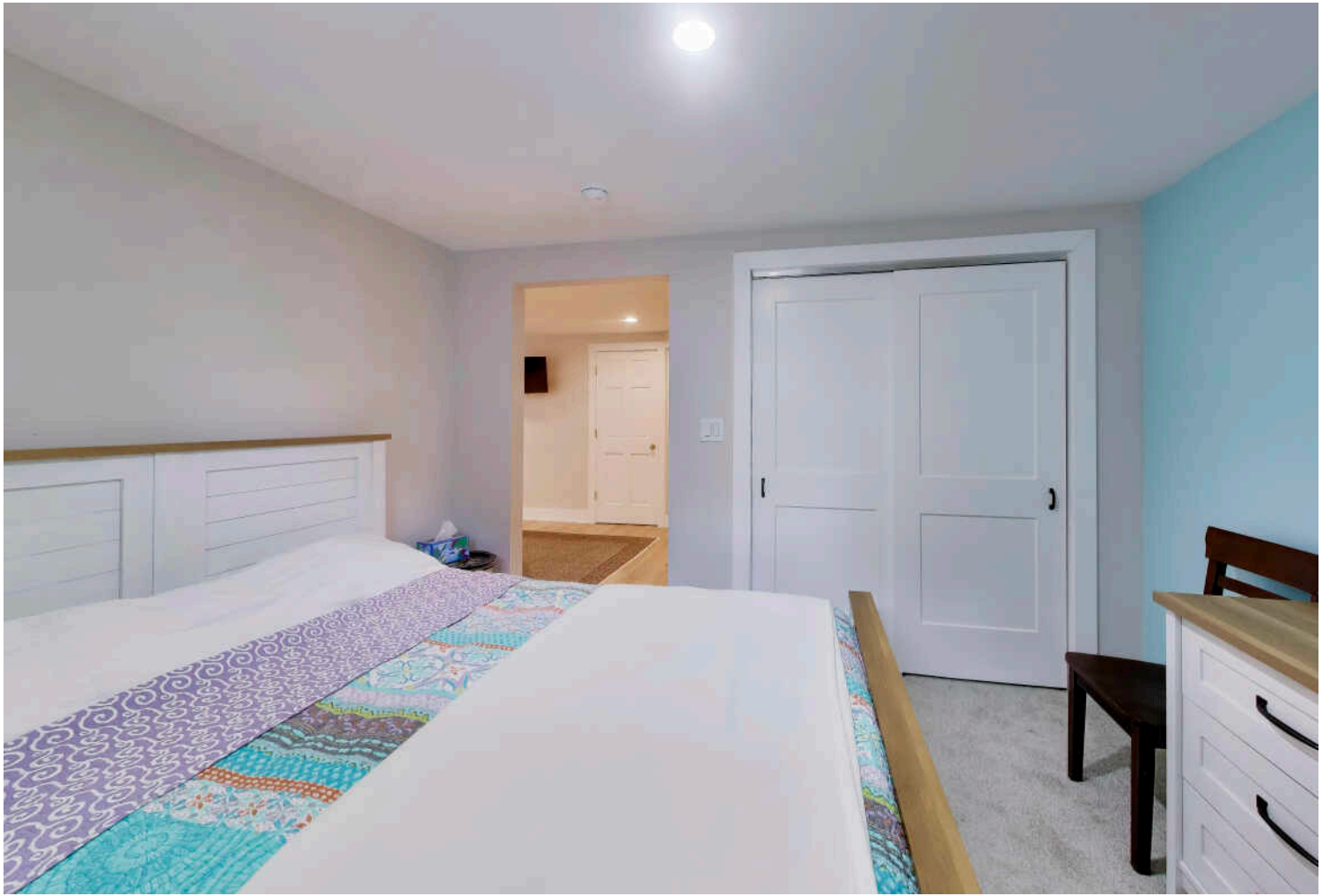


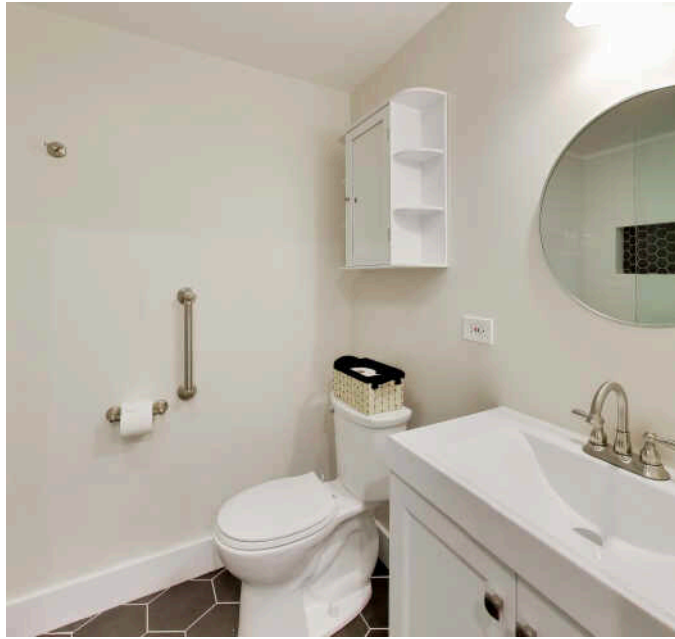
UNIT #2/LIVING/DINING



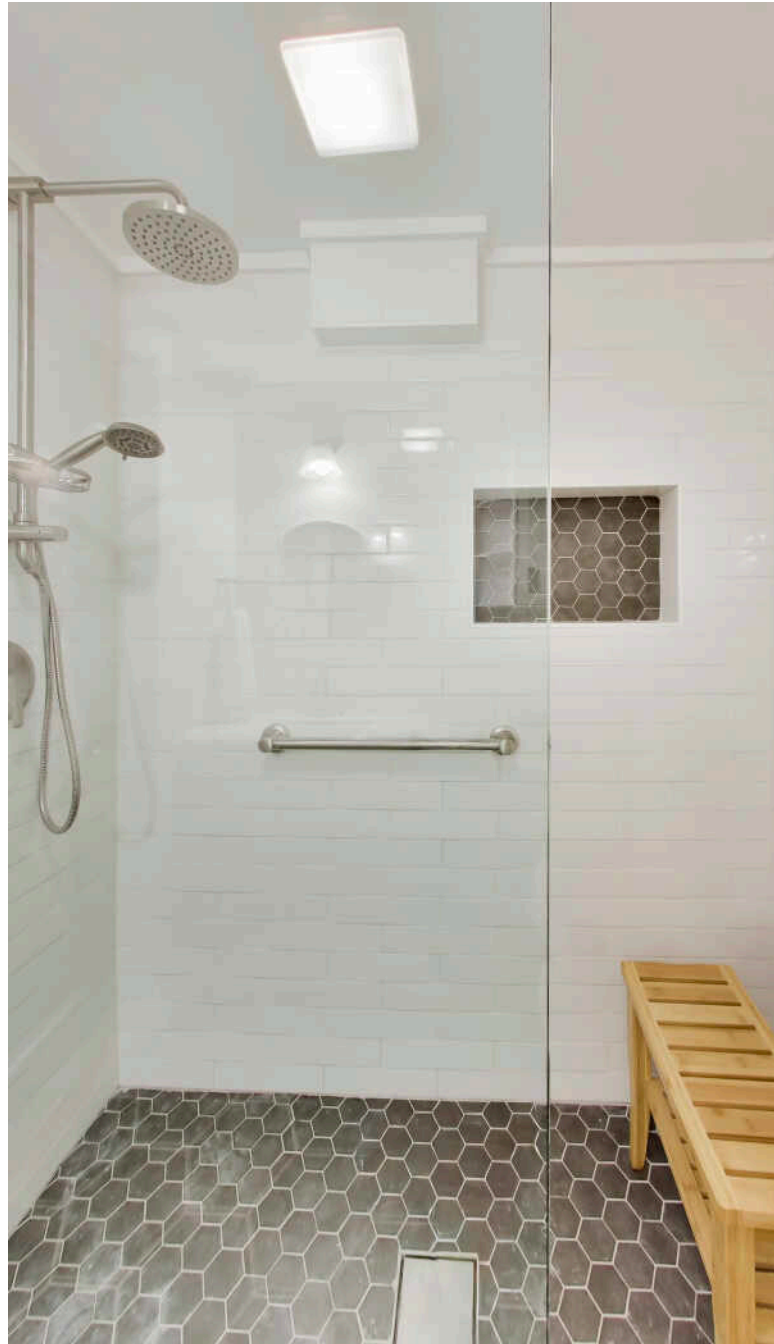
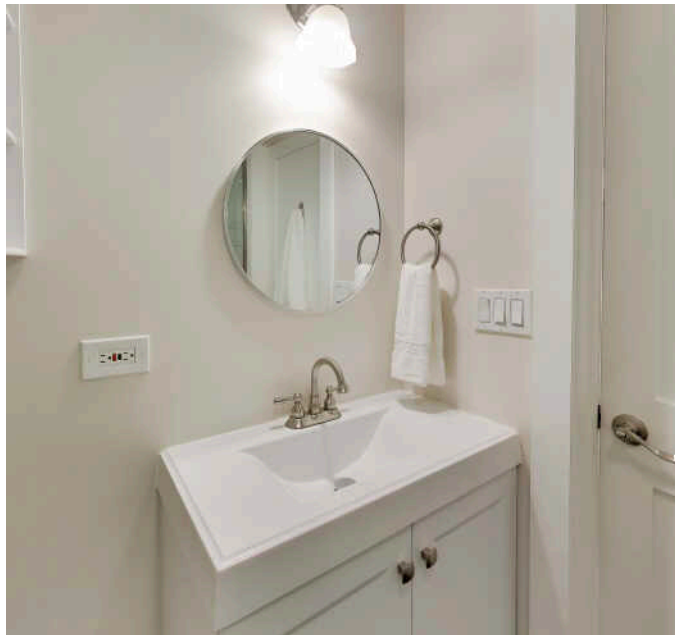


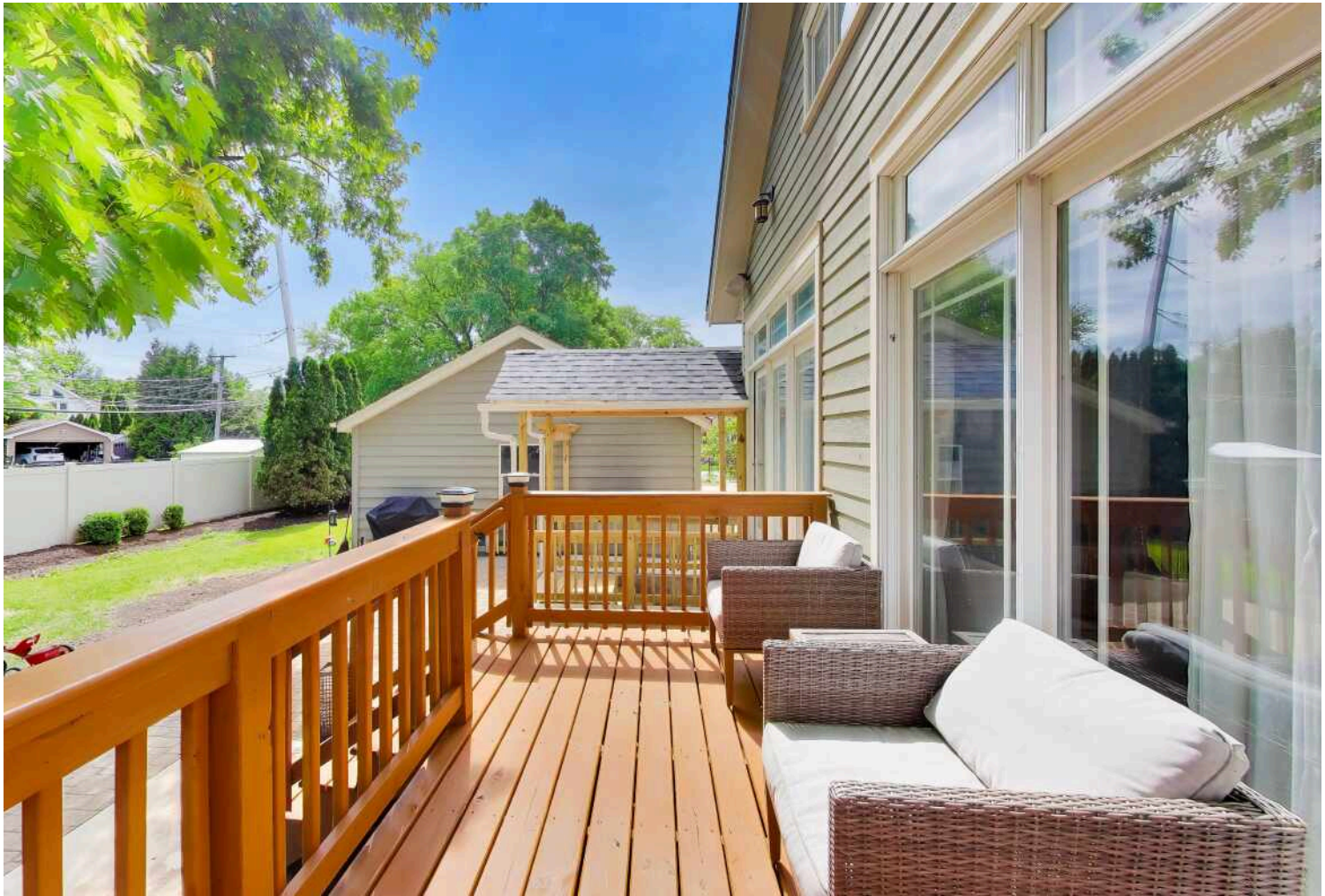
KITCHEN



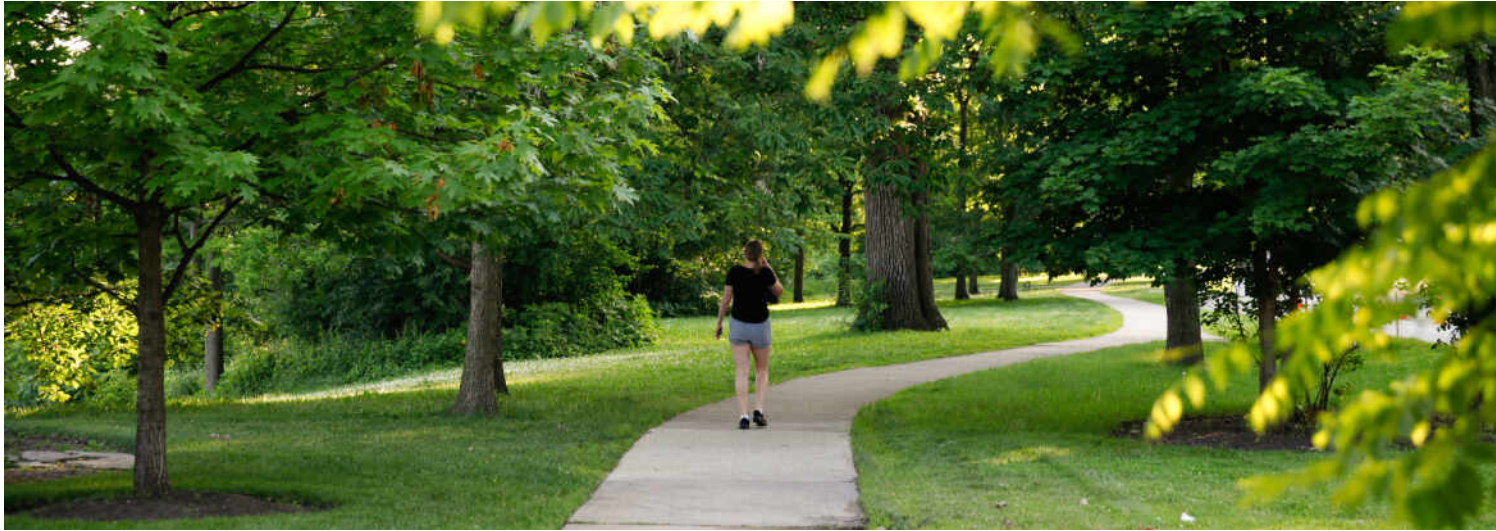


BATHROOM





DECK



## **RIVERSIDE** IS CONSIDERED TO BE THE FIRST PLANNED COMMUNITY IN THE UNITED STATES.

*Locals love living in a historically-recognized town that maintains its vintage charm right down to the gas street lanterns. Riverside also boasts a wonderful restaurant scene and some acclaimed antique shops.*

Incorporated in 1875, the historically recognized village is noted for its expansive parkways, charming town center, and early 20th century architecture.

The Riverside Landscape Architecture District was designated a National Historic Landmark in 1970. To retain its original aesthetic charm, the village even maintains 379 antique-style gas street lanterns.

Residents take great pride in the community's history and architecture, which is on display through tours at the Riverside Historical Museum and the Riverside Water Tower. Homes include well-maintained 1920s bungalows, huge Victorians, and early 20th century mansions.

The village features several restaurants including some that have been recognized as among the best in the Chicago area. There are also several unique boutiques and stores selling antiques and Victorian house fixtures – a nod to the town's rich architectural history.

Riverside students attend District 96 schools including four elementary schools and one junior high school. High school students attend Riverside Brookfield High School, part of the Riverside-Brookfield Township School District 208.

With a train station along Metra's BNSF Railway, Riverside is a short commute to Chicago's Union Station.





REAR EXTERIOR

@properties® | CHRISTIE'S  
INTERNATIONAL REAL ESTATE

*Leading* REAL ESTATE  
COMPANIES  
OF THE WORLD®

LP  
LUXURY  
PORTFOLIO  
INTERNATIONAL

