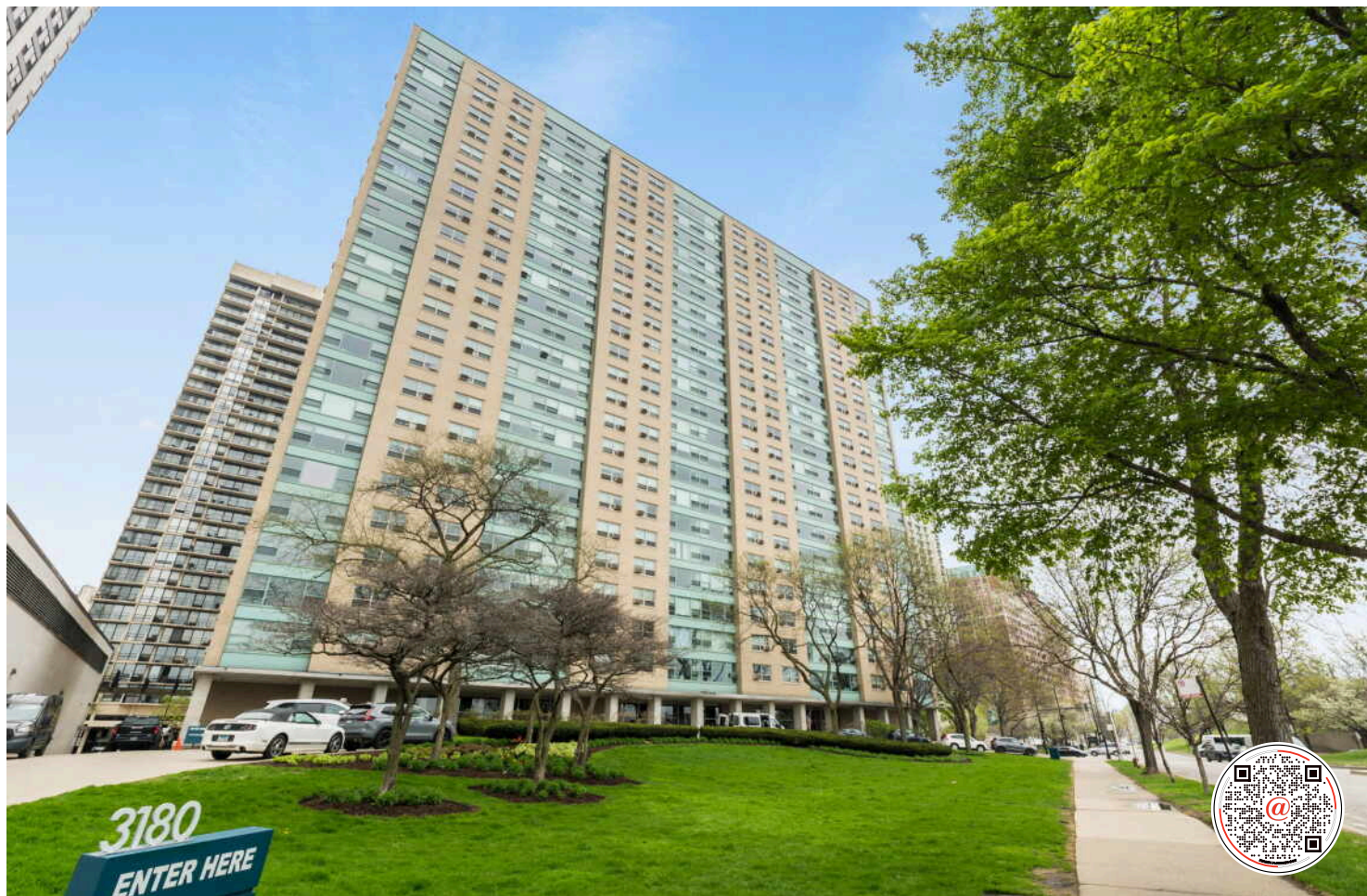


3180 N LAKE SHORE DRIVE #6E
LAKEVIEW

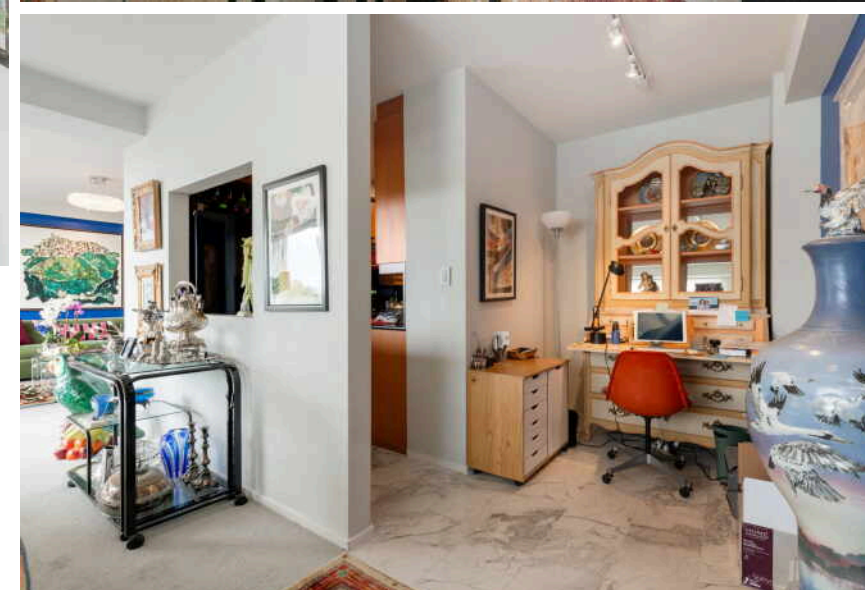
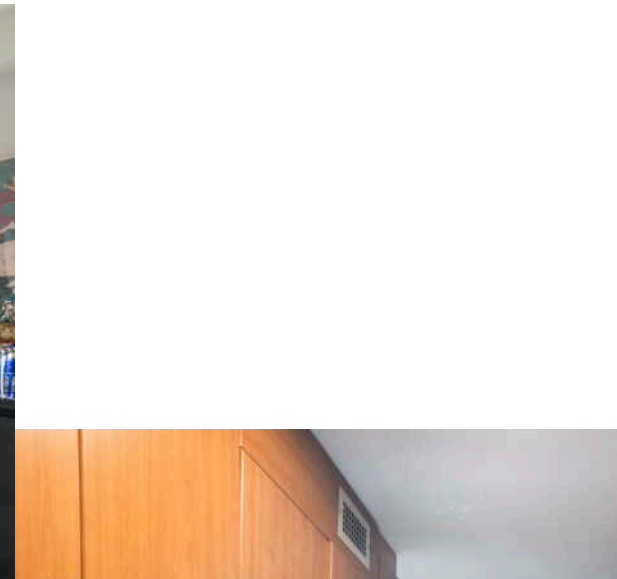


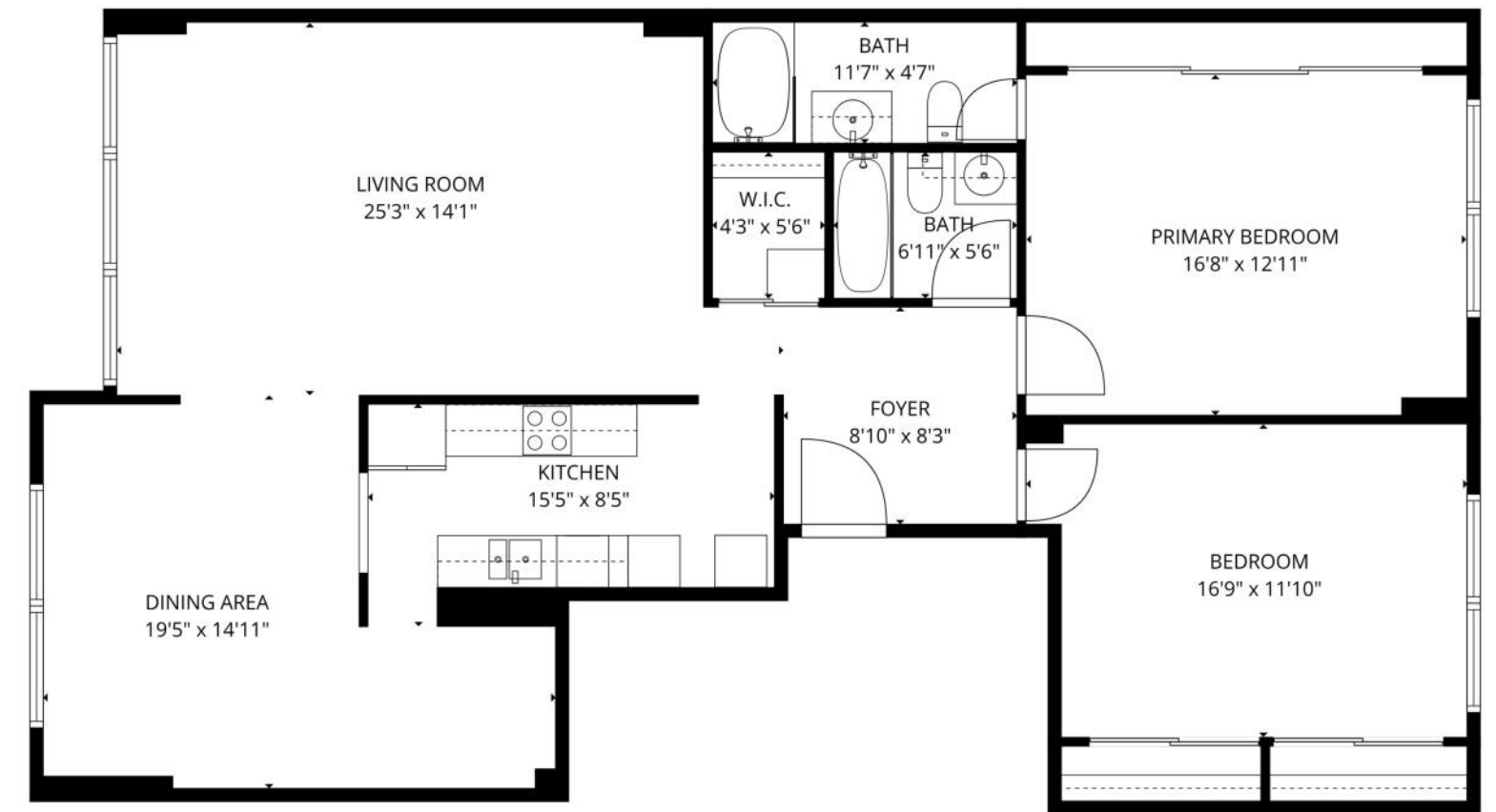
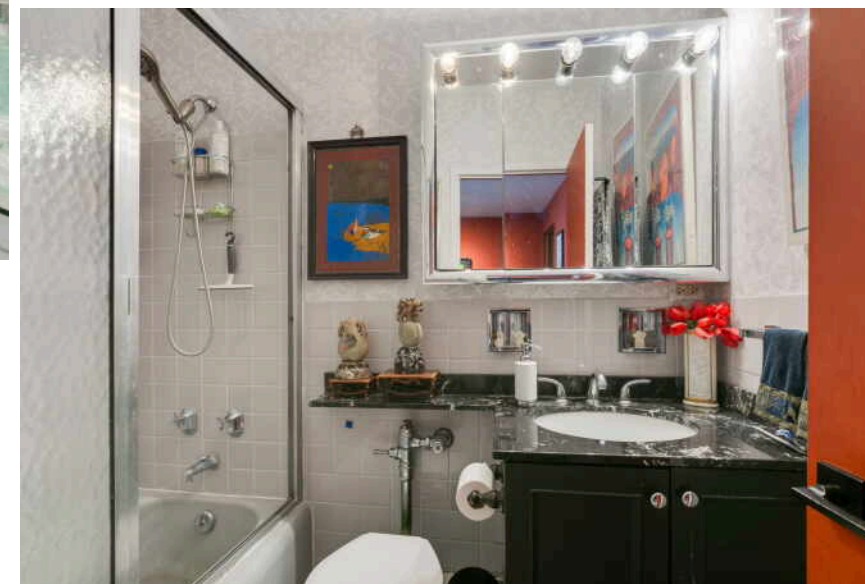
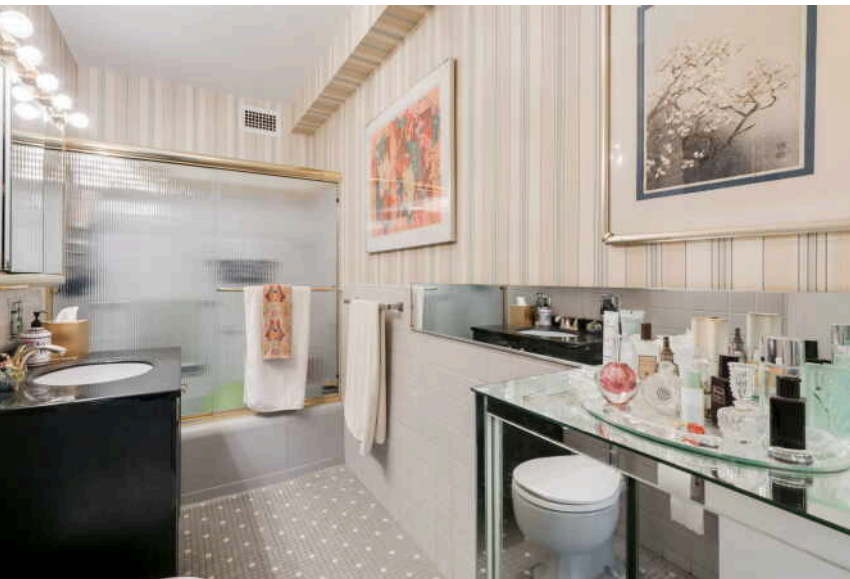


BELMONT HARBOR HOME

East Lakeview 2-bed/2-bath condo with Belmont Harbor and lake views! Extra wide, extra large, expansive rooms throughout and ample closets. Large primary bedroom suite offers a full wall of closets. Well appointed kitchen features granite counters, high end appliances and plenty of cabinets. Second bedroom, currently set up as a tv den, has functional and attractive built in bookshelves in addition to a full wall of closets. In-unit washer/dryer is allowed -- the plumbing risers have been replaced. East and west exposures and only 2 units per elevator tier. Extremely well taken care of and improved building with new elevators, wonderful sundeck and beautiful lobby. Friendly and efficient 24-hour door staff and complimentary guest parking. Valet parking is available for residents; onsite engineers/maintenance and management keep residents happy. Big storage locker and bike storage available for a nominal fee. Sun deck w/grills, fitness center, mail & receiving rooms complete the amenities package. CTA express bus at the corner; lakefront path for walking and biking right across the street!

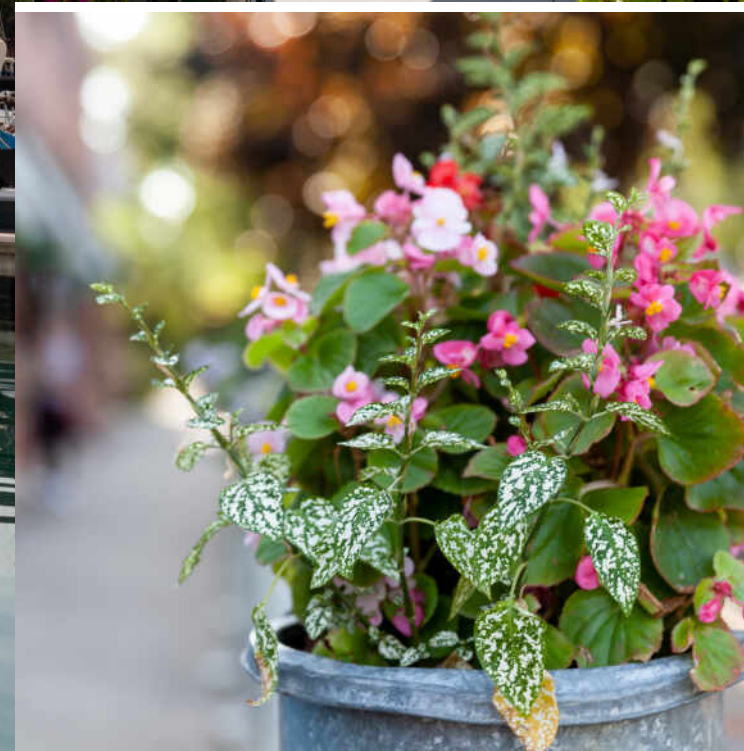
2 BEDROOM
2 BATH
TAXES: \$4,071
ASSESSMENTS: \$1,429 / MONTH





TOTAL: 1361 sq. ft
 1st floor: 1361 sq. ft
 EXCLUDED AREAS: WALLS: 95 sq. ft

FLOOR PLAN CREATED BY CUBICASA APP. MEASUREMENTS DEEMED HIGHLY RELIABLE BUT NOT GUARANTEED.



CHICAGOANS WILL FIND MORE THAN A FEW OF THEIR FAVORITE THINGS IN **LAKEVIEW**, ONE OF THE LARGEST NEIGHBORHOODS ON THE CITY'S NORTH SIDE.

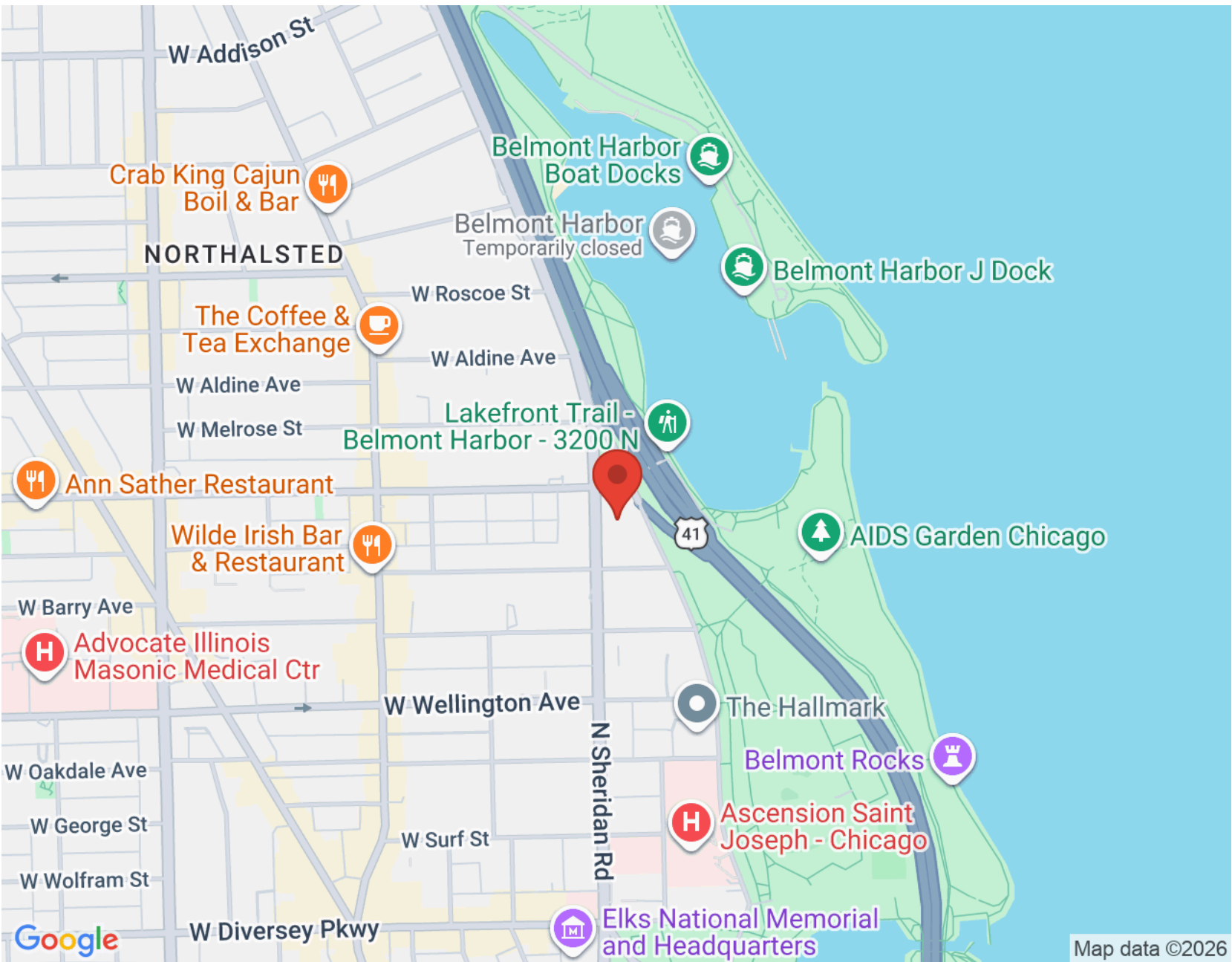
For starters, there's Lakeview's proximity to the beach and public transit, quiet residential streets, thriving restaurant and bar scene, and Wrigley Field.

Then there's the neighborhood's historic theaters and notable architecture. The Music Box Theater has been operating since it opened in 1929, originally showing silent films accompanied by a live organ player. It now plays independent and foreign films.

Did we mention the outdoor festivals, farmers markets, nightlife, and cultural attractions? Lakeview is home to the Belmont Theater District with over 30 theaters and live performance venues near the Belmont "L" station. Residents also have a front-row seat to the Chicago Marathon, Chicago Pride Parade, and Bike the Drive.

And we can't forget shopping - shops on the Southport Corridor, independent businesses on Lincoln Avenue, and unique boutiques sprinkled throughout the neighborhood.

Lakeview includes a variety of housing styles and prices. Homes run the gamut from vintage walk-ups, condominiums, new construction three-flats, loft buildings, converted courtyard buildings, and high-rises. There are also a variety of single-family homes from stately mansions near Lincoln Park to contemporary new construction throughout the neighborhood.



NOTES _____



ELLEN WEBBER

(773) 350-7773

ELLENWEBBER@ATPROPERTIES.COM