

3191 NORTH SOUTHERN HILLS DRIVE
VILLAS AT MIDLANE





ROOM DIMENSIONS

LIVING ROOM : 16' × 16'

FAMILY ROOM : 16' × 18'

DINING ROOM : 16' × 12'

KITCHEN : 12' × 14'

PRIMARY BEDROOM : 16' × 14'

SECOND BEDROOM : 13' × 11'

THIRD BEDROOM : 14' × 13'

3 BEDROOM

3 BATH

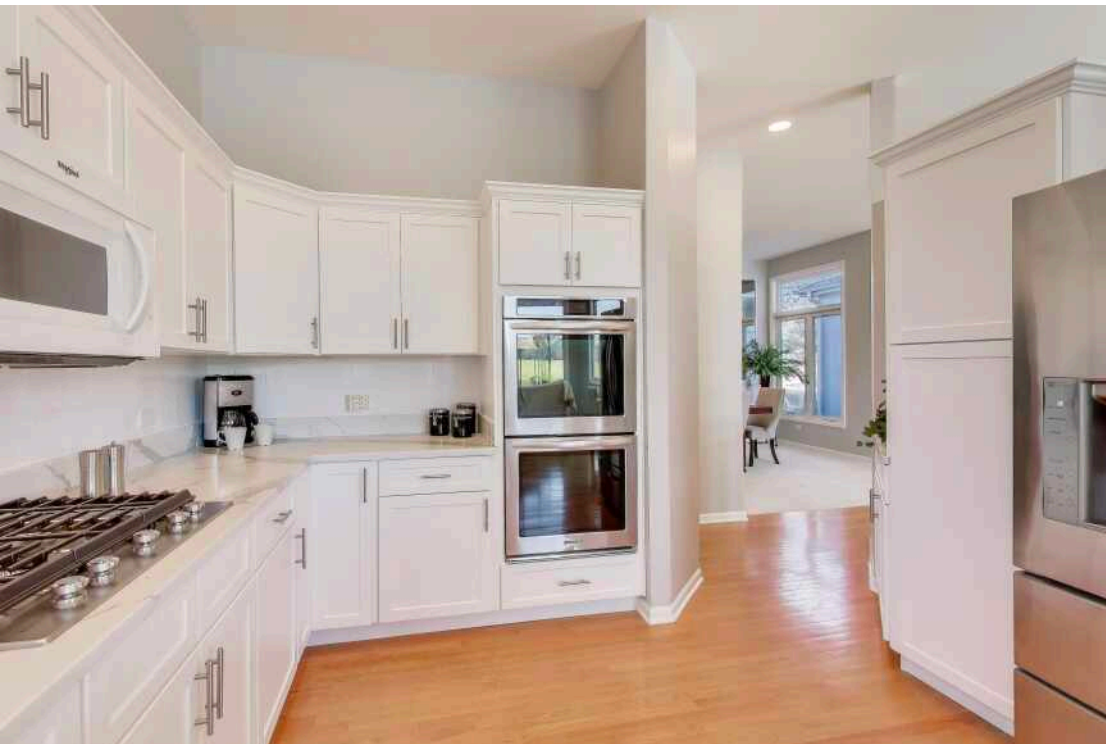
TAXES: \$9,519

ASSESSMENTS: \$250 / MONTH

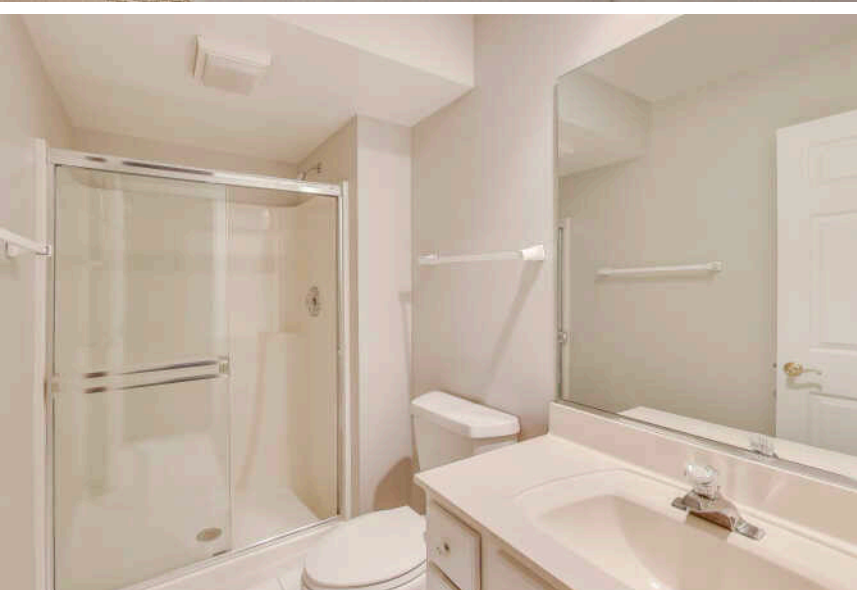
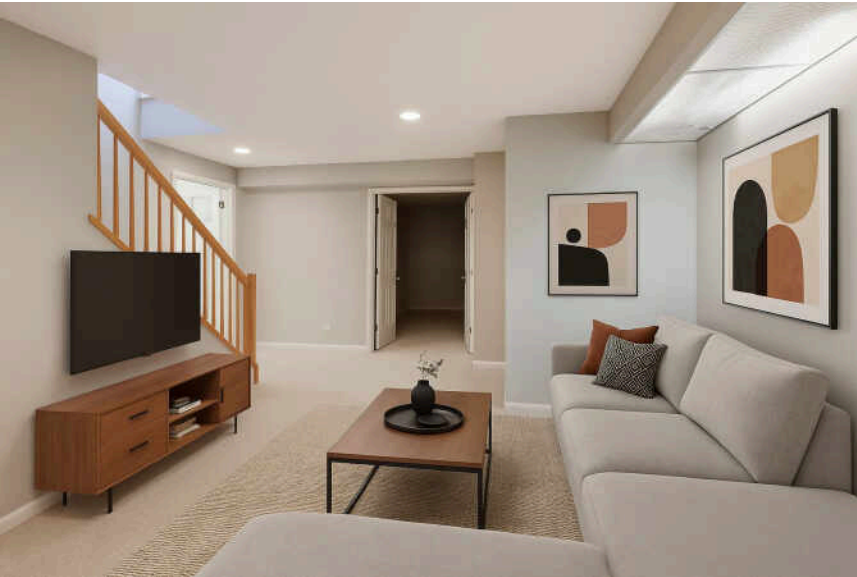
UPDATED AND MOVE-IN READY 3 BEDROOM/3 BATH RANCH HOME WITH STUNNING VIEWS IN THE VILLAS AT MIDLANE.

- This open-concept floor plan and main floor laundry room allows for truly one level living in this modern ranch style home with 2200+ square feet on the main level and a finished basement with loads of storage!
- You'll find large rooms throughout the main living level with recessed lighting, hardwood floors, some newer windows and three (3) separate sets of sliders that fill this space with loads of natural light.
- The updated kitchen features white cabinetry, granite countertops, Jenn-Air double ovens, gas cooktop, a breakfast bar with seating, and an eat-in table space that opens to the family room.
- The LARGE primary bedroom is bright and sunny with vaulted ceilings and an oversized window with more stunning views of the pond and fairway and yet another set of sliding door for easy access to enjoy the back patio and peaceful outdoors.
- Not to be missed in the primary bedroom is a spacious walk-in closet and a wall of hall closets too!
- The primary ensuite bath has a whirlpool tub, separate shower and a vanity with dual sinks and make-up area with great lighting provided by the skylights.
- An open staircase leads to a unique and hard to find fully finished lower level, complete with a rec room, additional 3rd bedroom and full bath as well as a large storage or work room!
- An attached 2 car garage completes this great space. Simply move in and enjoy this golf course ranch villa, and a quick closing is possible!











AUDRA CASEY

(847) 208-8779

TOP 1% AGENT, NORTHSORE SALES

AUDRACASEY@ATPROPERTIES.COM

WWW.AUDRACASEY.COM

