



3225 N HOYNE AVENUE ROSCOE VILLAGE



@properties | CHRISTIE'S
INTERNATIONAL REAL ESTATE

LUXURY
PORTFOLIO
INTERNATIONAL



KELLY JOHNSON BROKER

202.550.9732 mobile
773.432.0200 office
kellyjohnson@atproperties.com

KJ
KELLY JOHNSON

3225 N HOYNE AVENUE • ROSCOE VILLAGE





3225 N HOYNE AVENUE

FEATURES

Exquisite 5 bed/4.2 bath Single Family Home on a sunny corner lot in Roscoe Village. This meticulously maintained residence offers the perfect blend of modern elegance and comfortable living. As you step through the inviting foyer, you are greeted by an abundance of natural light in the formal living and dining areas. A striking marble fireplace, 10-foot coffered ceilings, custom millwork, custom lighting, and hardwood floors create an inviting atmosphere. The gourmet kitchen allows you to embrace your culinary skills with a built-in Sub-Zero refrigerator, 48" Wolf range, and a gorgeous marble island. White kitchen cabinetry with plenty of storage, plus a walk-in pantry and convenient passthrough butler's pantry. The airy and bright family room is luxurious, yet cozy, with a second gas fireplace and large windows overlooking the mudroom and charming patio. Retreat upstairs to the primary suite, where you'll find two walk-in closets, and a spa-like ensuite bathroom featuring an oversized soaking tub, massive marble tiled shower with two overhead rain showers, dual vanities, and heated floors. Second and third bedrooms on upper level have vaulted ceilings and beautifully organized closets. The lower has an expansive living area with a wet bar, tall ceilings, and heated flooring through. A gracious guest suite, 5th bedroom, and another half bathroom complete this level. Prime location in the HEART of Roscoe Village and Audubon School district. City living doesn't get easier than this! Don't miss this incredible opportunity to own in "The Village Within the City" and on the best block in Roscoe Village where neighbors are friends that become family!



KELLY JOHNSON BROKER

202.550.9732 mobile
773.432.0200 office

kellyjohnson@atproperties.com



KELLY JOHNSON



DINING



KITCHEN







PRIMARY BEDROOM



ENSUITE





ENSUITE



BEDROOM

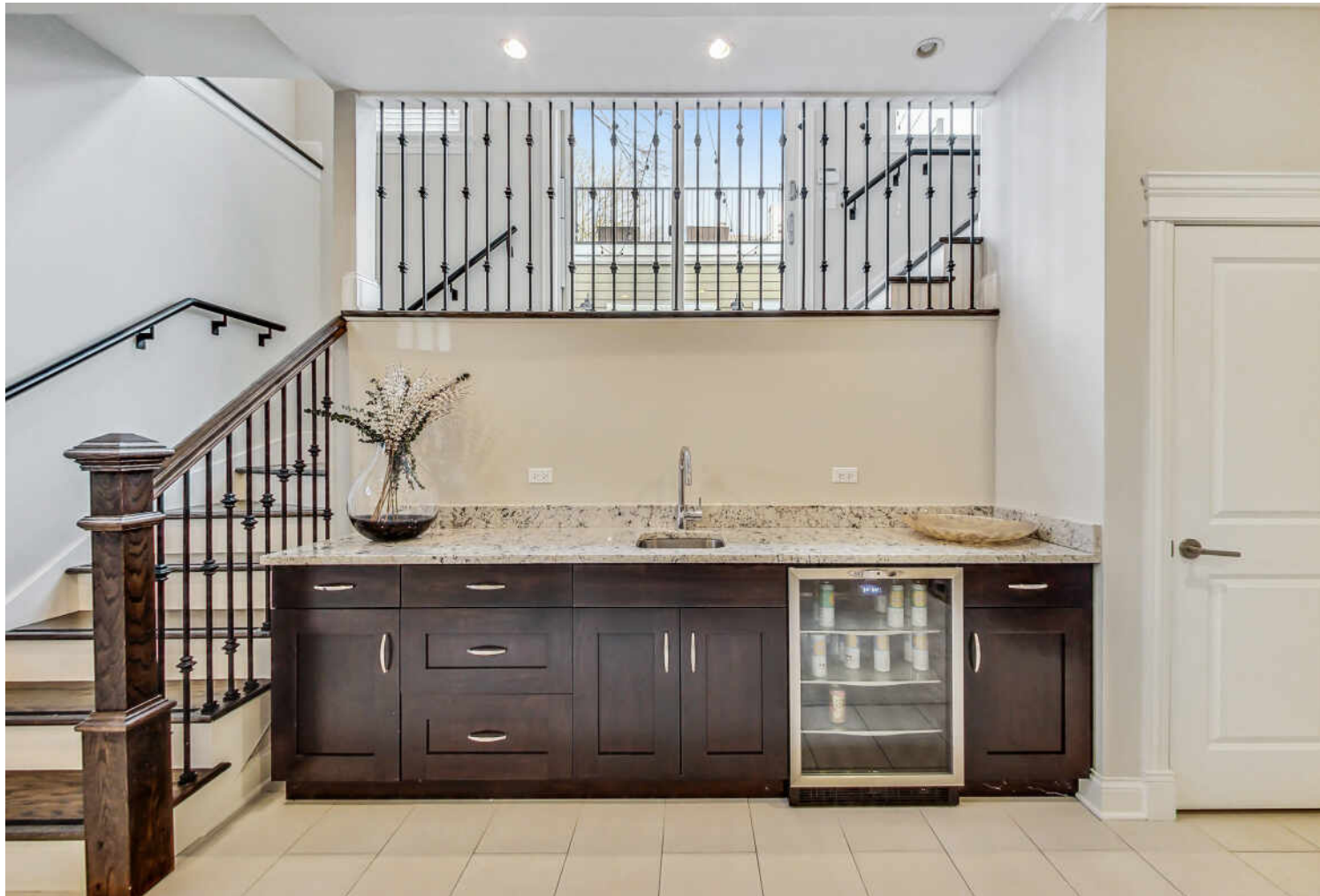


BATHROOM



LAUNDRY





BAR





BEDROOM

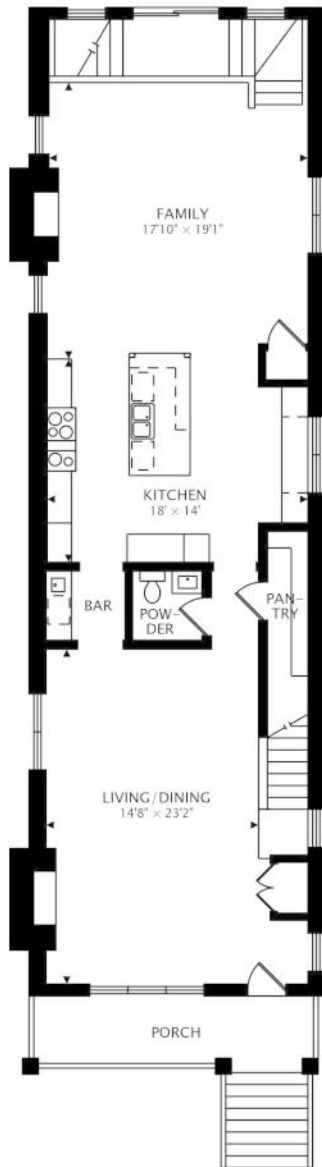


ENSUITE

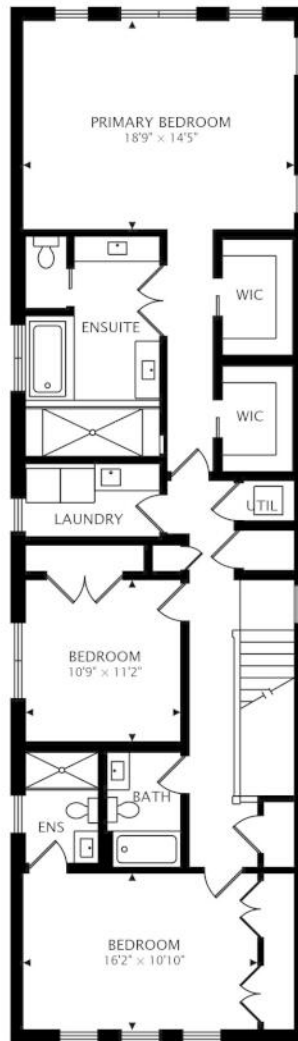




PATIO



MAIN
1359 sq ft



SECOND
1386 sq ft



LOWER
1515 sq ft BELOW GRADE



