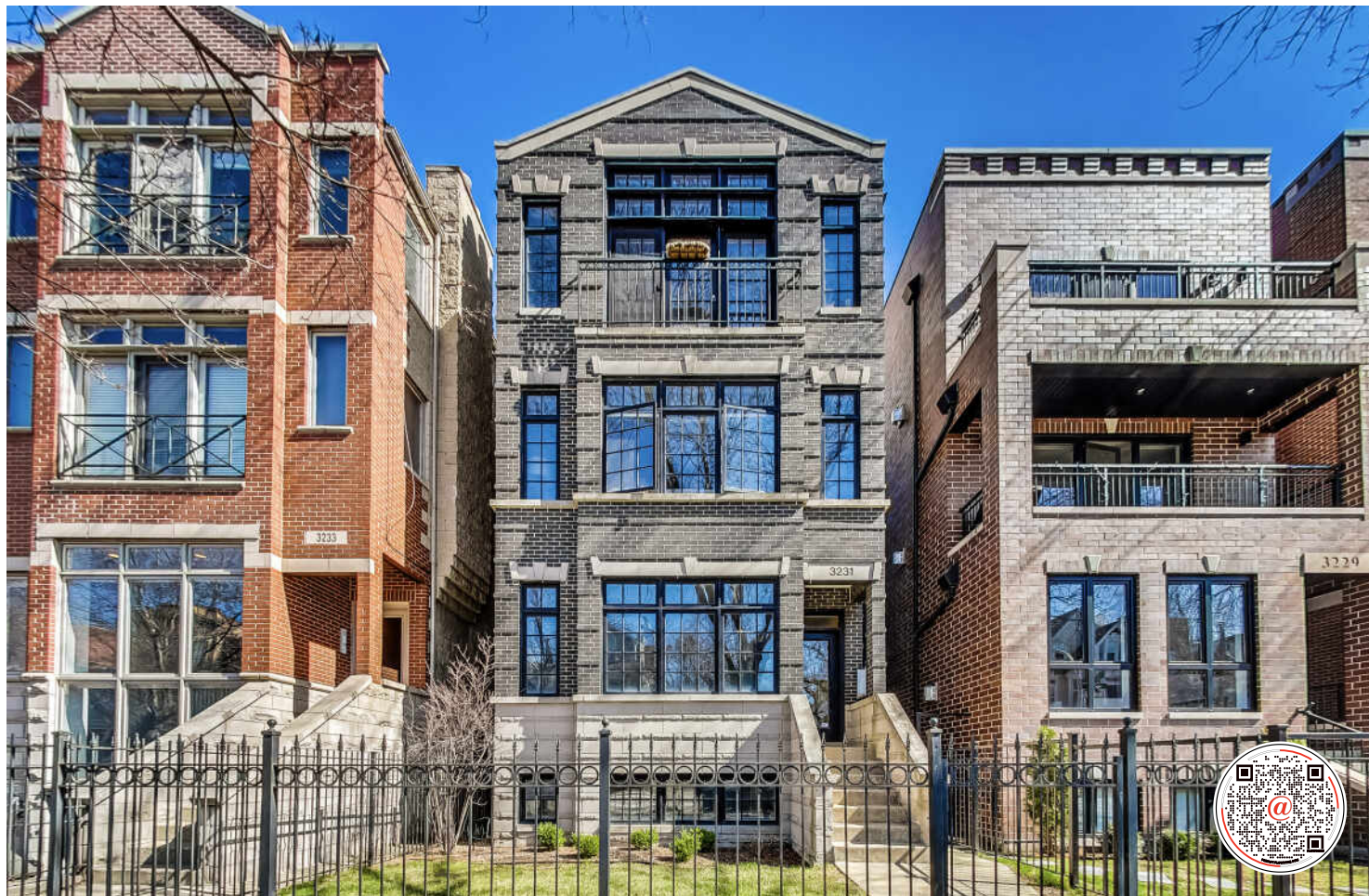


3231 N RACINE AVENUE #1

LAKEVIEW

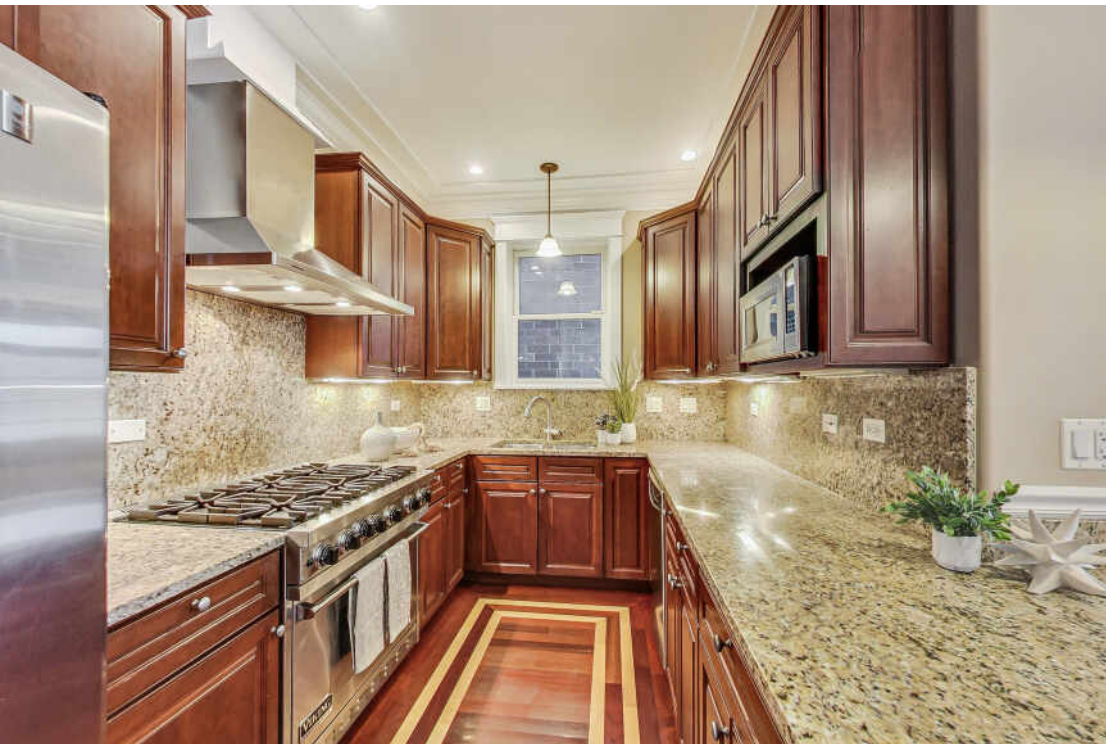
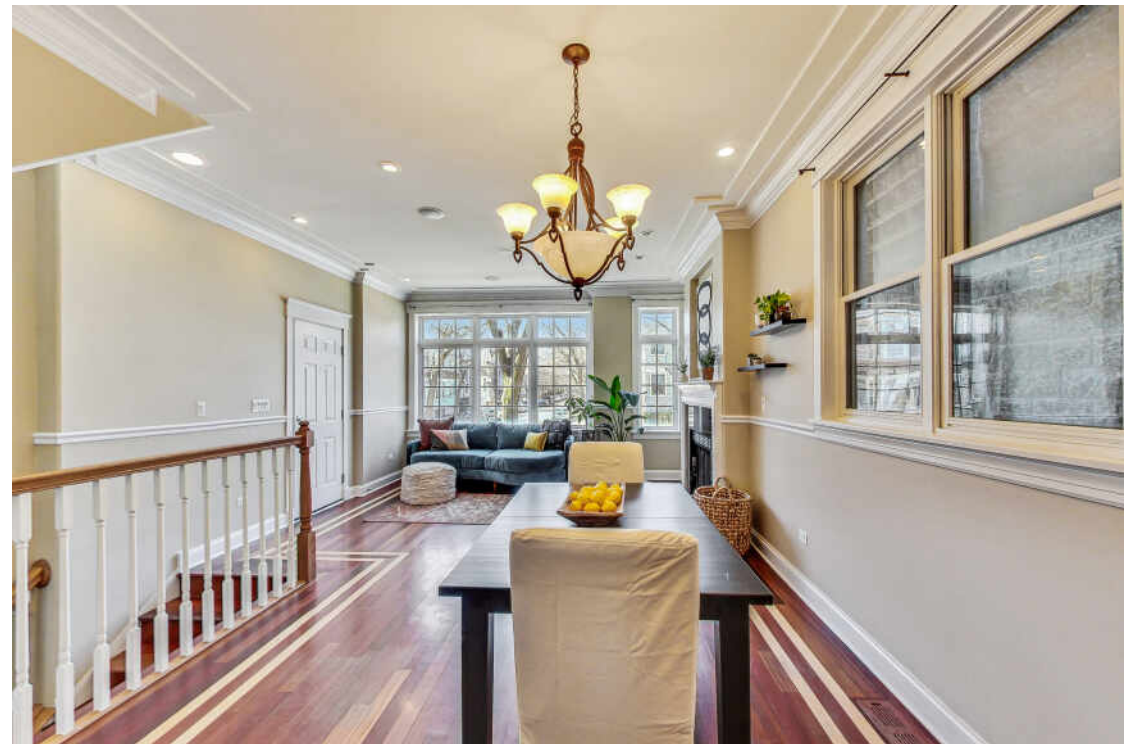


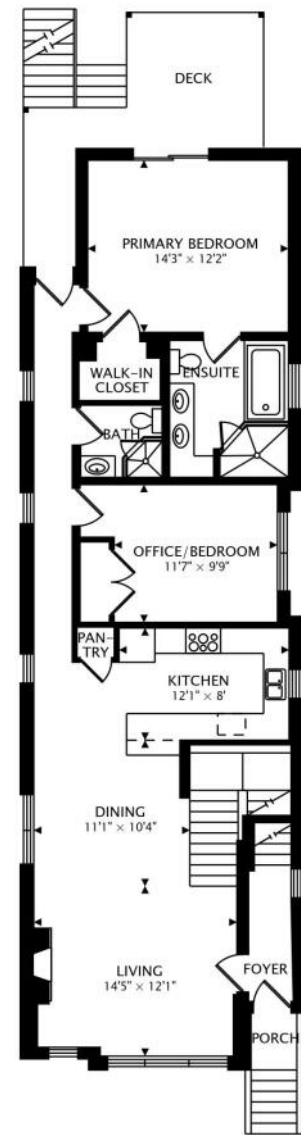
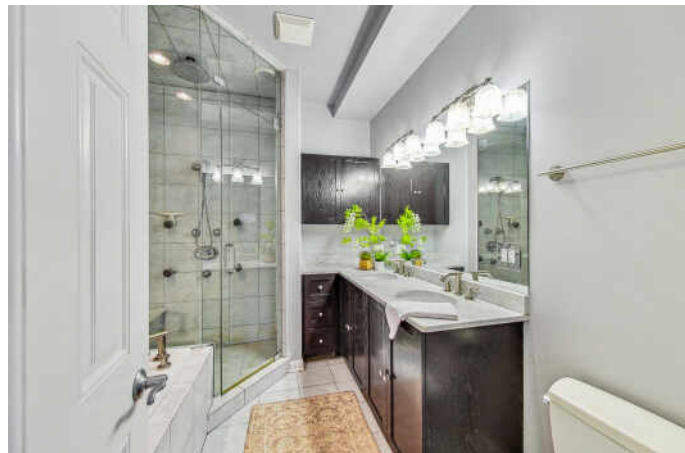


4 BEDROOM
3 BATH

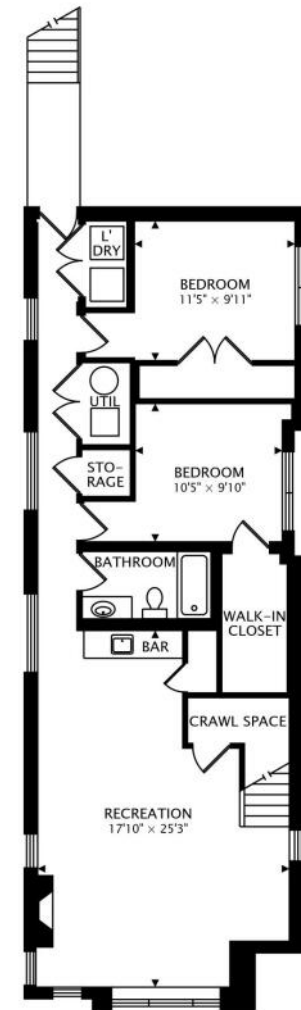
SUPER SPACIOUS IN UNBEATABLE LOCATION

Welcome to your new home at this fabulous and spacious 4-bedroom Lakeview duplex down. With sunlight pouring into every corner, this home lives like a single-family, highlighting beautiful hardwood floors throughout the main living space. Enjoy the cherry hardwood floors, crown molding, and the cozy ambiance of two fireplaces. Retreat to the master bedroom suite, complete with a luxurious marble bathroom featuring double sinks, a whirlpool tub, steam shower, and heated floors. An additional bedroom and full bath on the main level offer flexibility for use as a spacious office, guest room, or library. Calling all chefs! The kitchen is a dream, boasting cherry cabinets, stainless steel appliances including a 36" Viking range, a breakfast bar, and granite countertops. Step outside to your large deck and garage, perfect for relaxing or hosting gatherings - it's the ideal, quiet respite. This rare find is the largest unit in the complex, offering over spacious 2300 sq ft of living space just steps away from the highly sought-after Hawthorne Academy. The lower level is an entertainer's delight, with a deep pour that creates a super spacious feel. A large family room with fireplace, wet bar, and refrigerator provides plenty of space for everyone to spread out. Need an additional home office, a quiet retreat, or extra bedrooms? The lower level is peaceful and roomy, offering 2 additional bedrooms and a full bath, conveniently next to updated side-by-side laundry. Parking is a breeze with a 1-car garage, and the location couldn't be better - just moments from the vibrant Southport Corridor, CTA, Whole Foods, bars, restaurants, and the beautiful lakefront. Welcome home!

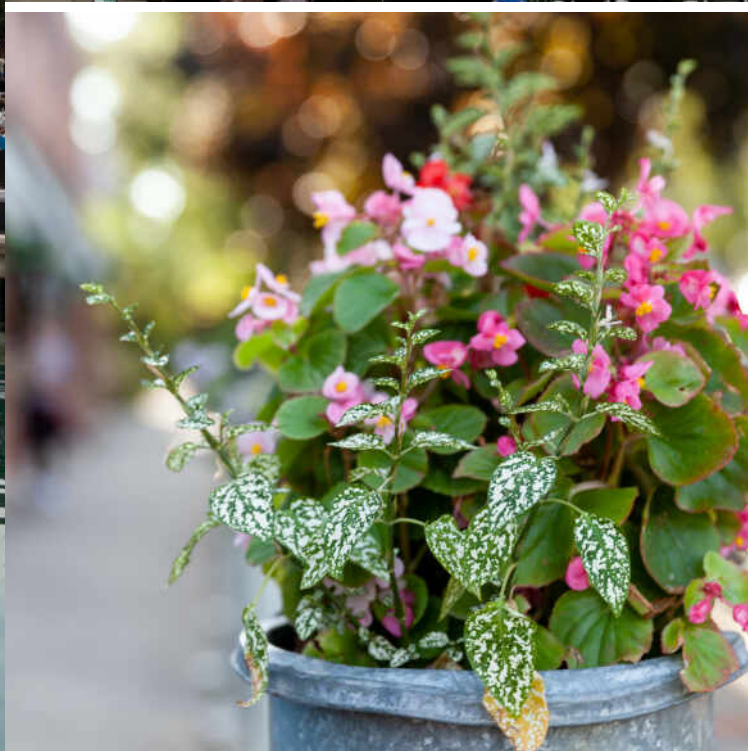




MAIN
1197 sq ft



LOWER
1112 sq ft BELOW GRADE



CHICAGOANS WILL FIND MORE THAN A FEW OF THEIR FAVORITE THINGS IN **LAKEVIEW**, ONE OF THE LARGEST NEIGHBORHOODS ON THE CITY'S NORTH SIDE.

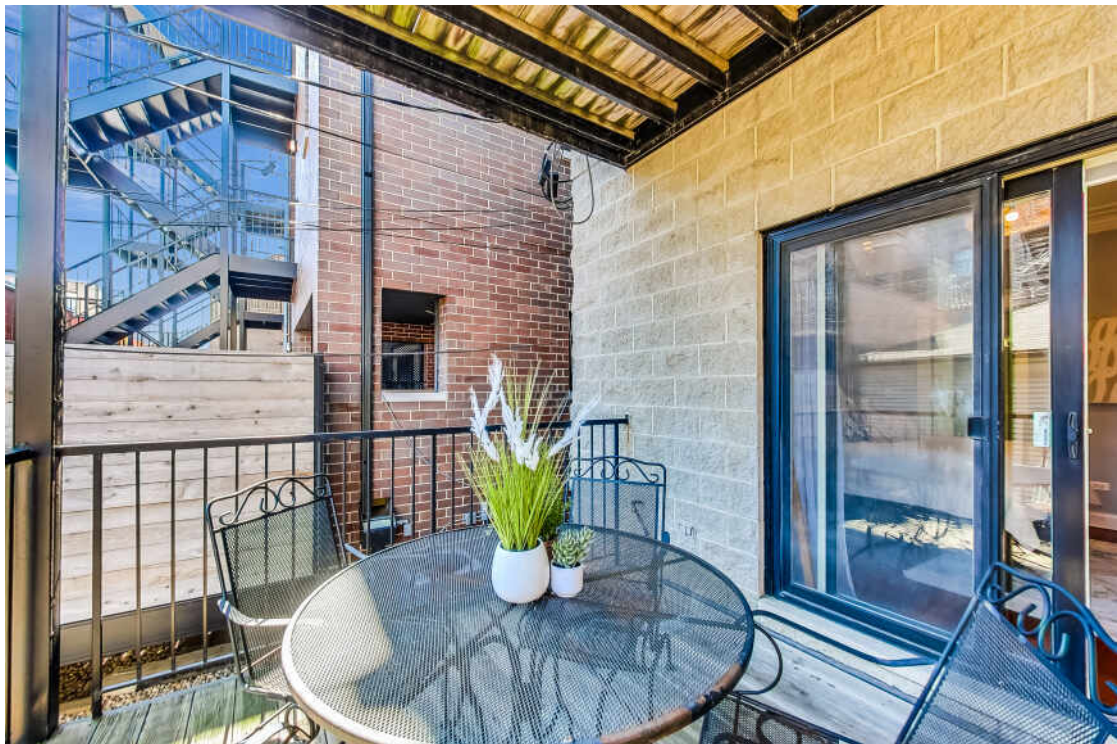
For starters, there’s Lakeview’s proximity to the beach and public transit, quiet residential streets, thriving restaurant and bar scene, and Wrigley Field.

Then there’s the neighborhood’s historic theaters and notable architecture. The Music Box Theater has been operating since it opened in 1929, originally showing silent films accompanied by a live organ player. It now plays independent and foreign films.

Did we mention the outdoor festivals, farmers markets, nightlife, and cultural attractions? Lakeview is home to the Belmont Theater District with over 30 theaters and live performance venues near the Belmont “L” station. Residents also have a front-row seat to the Chicago Marathon, Chicago Pride Parade, and Bike the Drive.

And we can’t forget shopping - shops on the Southport Corridor, independent businesses on Lincoln Avenue, and unique boutiques sprinkled throughout the neighborhood.

Lakeview includes a variety of housing styles and prices. Homes run the gamut from vintage walk-ups, condominiums, new construction three-flats, loft buildings, converted courtyard buildings, and high-rises. There are also a variety of single-family homes from stately mansions near Lincoln Park to contemporary new construction throughout the neighborhood.



NOTES

[illegible]



VICTORIA KRAUSE SCHUTTE

(708) 214-8108

708-848-0200

VKRAUSESCHUTTE@ATPROPERTIES.COM

WWW.VKDREAMHOME.COM



VICTORIA KRAUSE
SCHUTTE



CHRISTIE'S
INTERNATIONAL REAL ESTATE