

3237 N OAKLEY AVENUE #2N
ROSCOE VILLAGE





ROOM DIMENSIONS

LIVING ROOM : 17' x 18'

KITCHEN : 10' x 13'

PRIMARY BEDROOM : 10' x 13'

SECOND BEDROOM : 9' x 11'



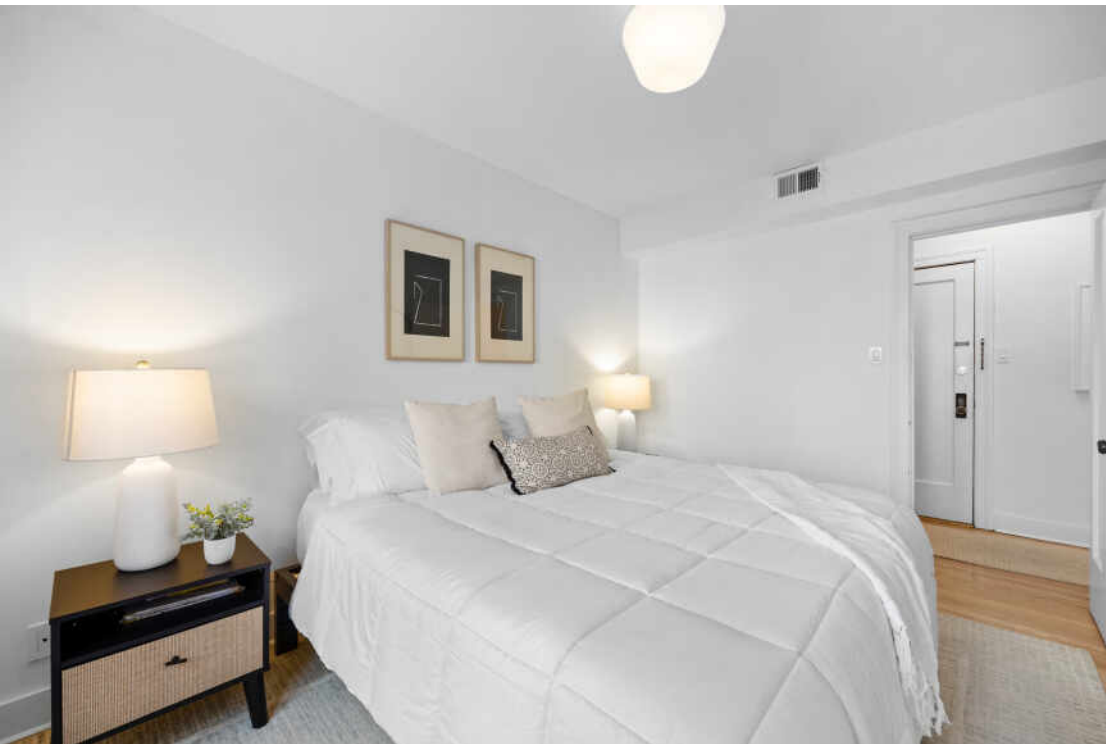
2 BEDROOM

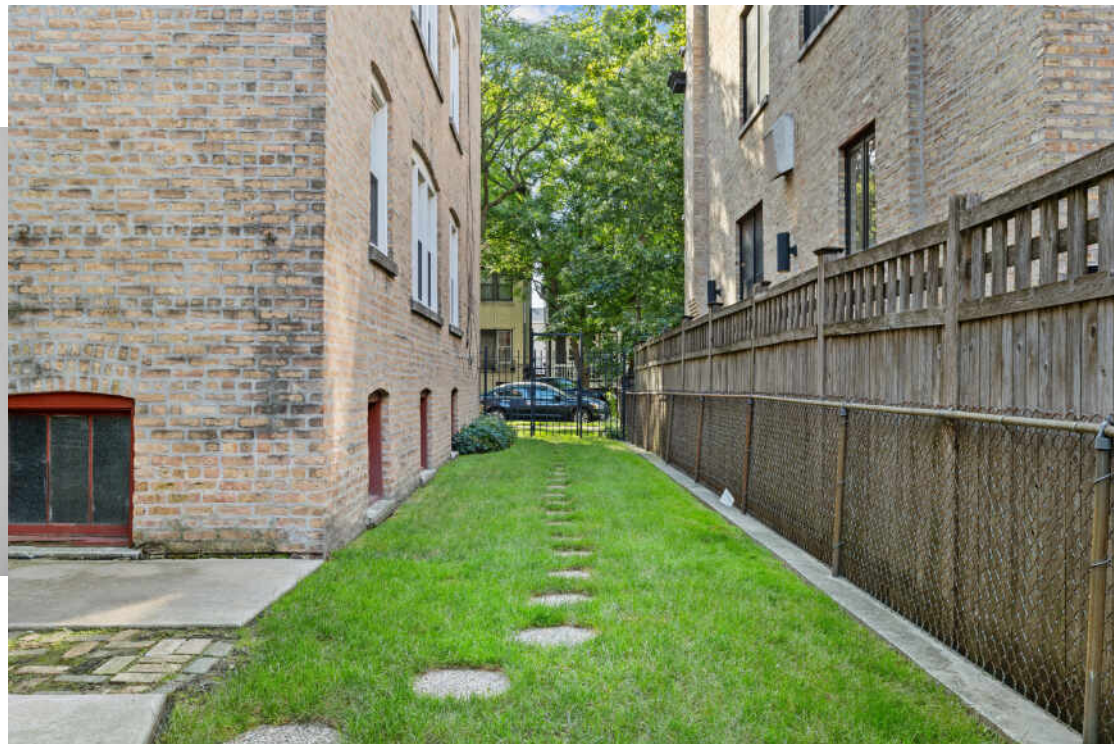
1 BATH

TAXES: \$5,697

ASSESSMENTS: \$313 / MONTH

Welcome to this adorable 2-bedroom, 1-bath second-floor home in the heart of vibrant Roscoe Village. Sun filled with hardwood floors throughout; the living room showcases a wall of windows that flood the space with natural light, plus a cozy gas fireplace framed by custom "built-ins". The nice sized primary bedroom boasts ample, well organized closet space for all your storage needs. French doors open to the second bedroom/office, offering flexible space for work or guests. The galley kitchen provides ample counter space and a great layout for cooking/entertaining. Enjoy the convenience of in-unit laundry, a shared deck, and a huge private storage unit perfect for bikes, seasonal gear & extras, plus easy street parking. A layout that maximizes comfort and style. Just steps from neighborhood cafes, trendy bars, boutiques, and everyday shopping, it's an ideal city retreat with everything you need right outside your door. A perfect blend of character and location-don't miss this one!







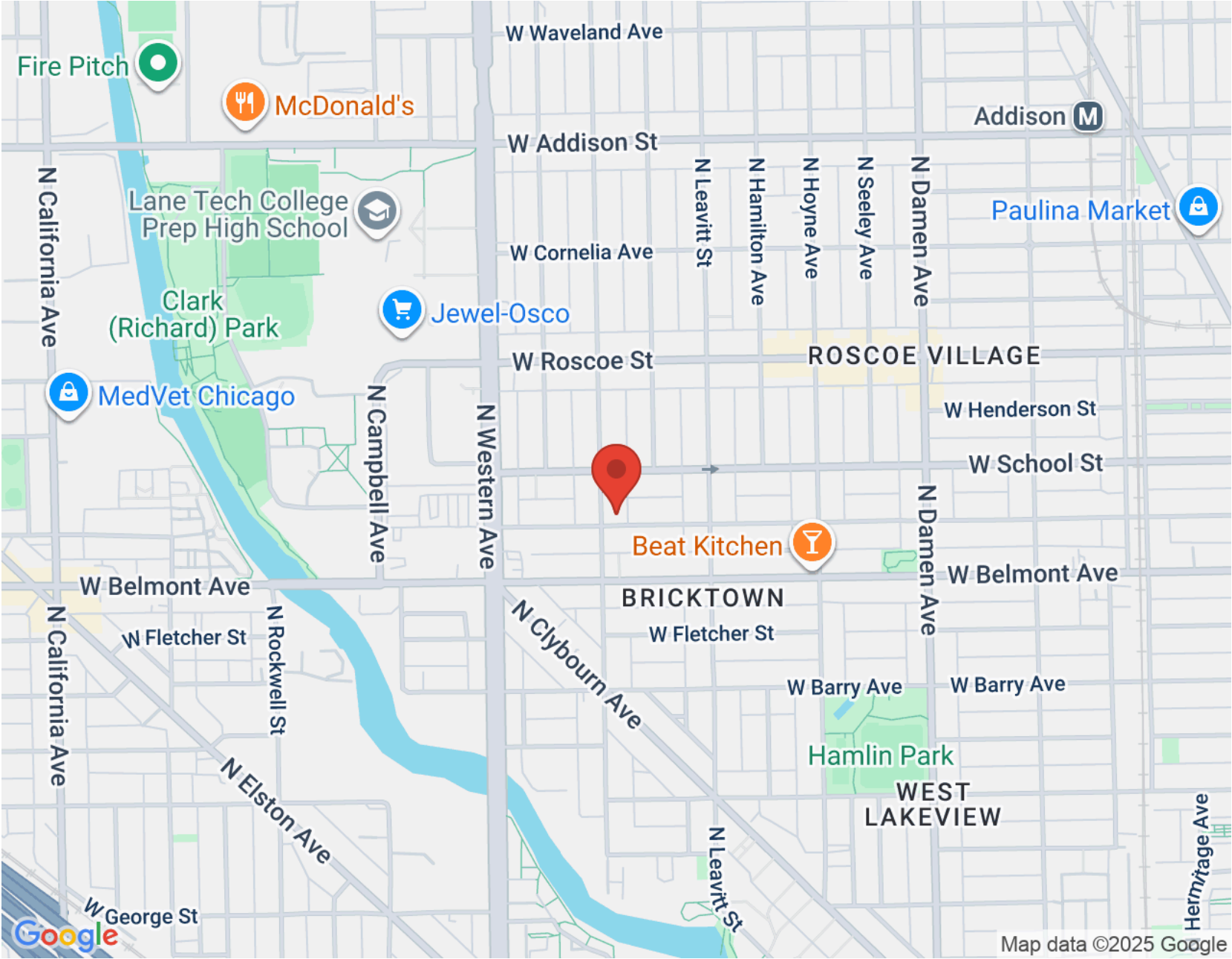
HAVING A QUAINAT VILLAGE ATMOSPHERE
IN THE HEART OF THE CITY IS NOT AN EASY
TASK, BUT **ROSCOE VILLAGE** PULLS IT
OFF.

Dubbed a “Village Within the City,” Roscoe Village offers residents a mix of businesses, residences and parks just six miles from downtown Chicago.

The charming neighborhood is dominated by single-family homes with beautiful gardens. There are also classic three-story walkups and duplexes as well as luxury new construction, which gives Roscoe Village a bit of a metropolitan feel. The neighborhood also offers a variety of eateries, cafes, taverns, boutiques and independent shops.

Roscoe Village is especially lively in the summer when the community hosts Retro on Roscoe and the Roscoe Village Burger Fest. Fellger Park is the perfect place to picnic with grassy spots and a playground. Nearby Hamlin Park has an outdoor swimming pool, several sports fields and courts, a playground and a fieldhouse.

Residents are served by CTA’s Brown Line, which has two stops in the neighborhood.



NOTES _____



MARY O'MALLEY

(847) 804-2644

MARYOMALLEY@ATPROPERTIES.COM



All specifications, features, designs, price, assessments, taxes and materials are subject to change without notice. Depicted floor plans and architectural renderings are only an artist's impression.

