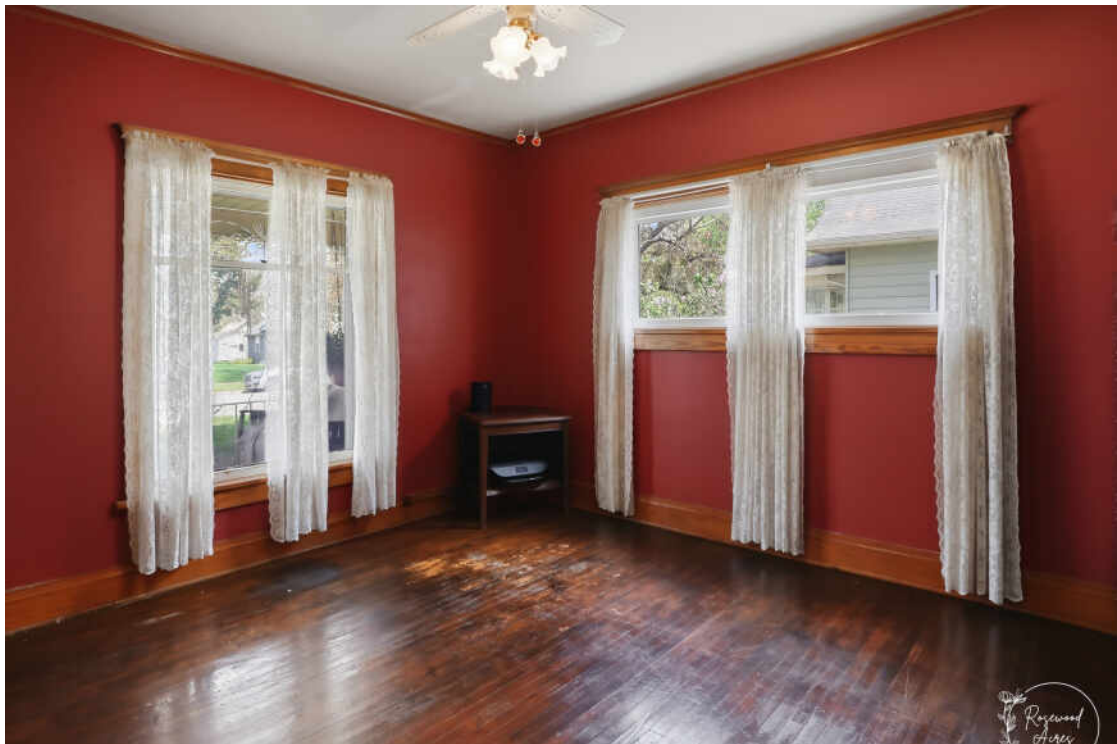


325 W CHIPPEWA STREET
DWIGHT



@properties®

CHRISTIE'S
INTERNATIONAL REAL ESTATE



ROOM DIMENSIONS

LIVING ROOM : 14' x 16'

FAMILY ROOM : 14' x 13'

DINING ROOM : 14' x 17'

KITCHEN : 15' x 14'

PRIMARY BEDROOM : 18' x 13'

SECOND BEDROOM : 15' x 14'

THIRD BEDROOM : 12' x 11'

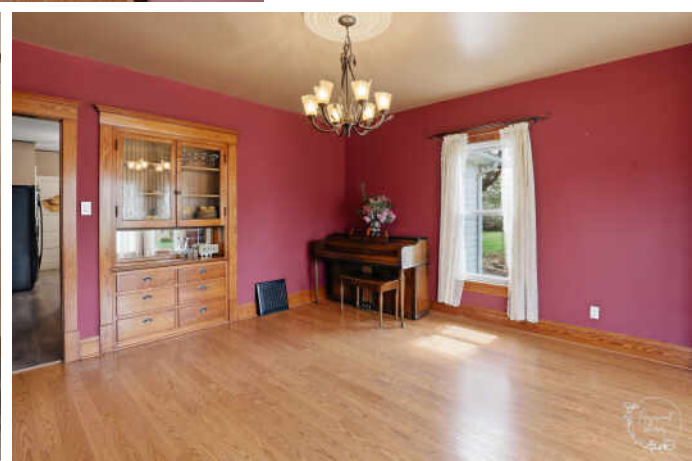
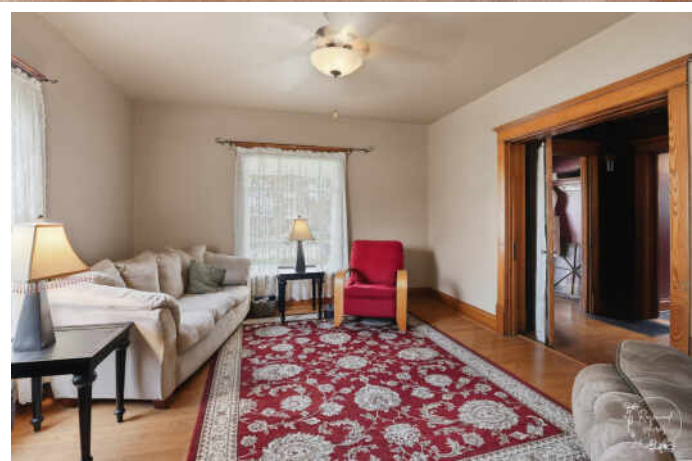
FOURTH BEDROOM : 13' x 11'

4 BEDROOM

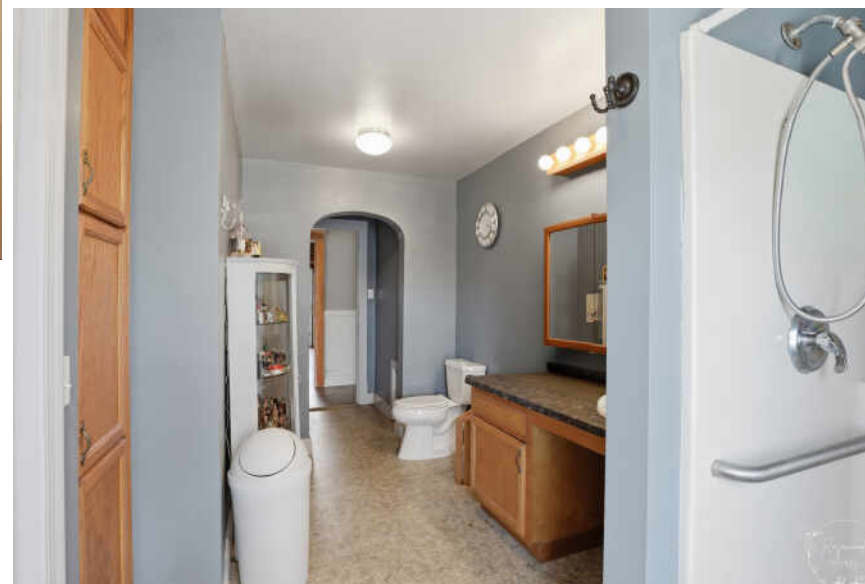
2.1 BATH

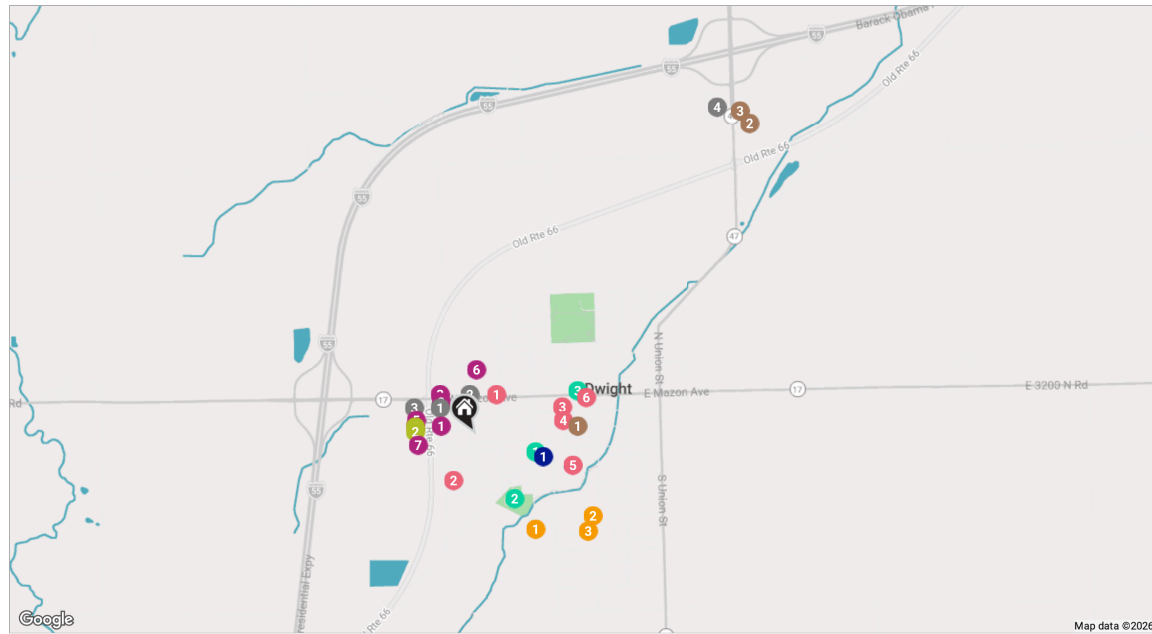
TAXES: \$5,041

Own a piece of Dwight history with this beautiful Craftsman home! Even featured on its own historical postcard. ****SELLER OFFERING HOME WARRANTY**** This beauty features 4 large bedrooms and 2.5-baths. Showcasing timeless character with original hardwood floors, original woodwork throughout, original built ins, and original pocket doors. A full walk-up attic with gas, water, and electric hookups offers incredible potential for additional living space. Laundry options are available on both the main floor and basement, plus a classic laundry chute. Step outside and relax on the spacious covered porch or enjoy the oversized yard featuring a koi pond stocked with large goldfish, fire pit, and pergola - perfect for relaxing or entertaining. Seller is also including a riding lawnmower and gas grill for added convenience. A rare opportunity to own a historic Craftsman home filled with character in the heart of Dwight. MAJOR UPDATES: new roof home and garage (2023), hot water heater (2025), and sump pump (2026).









RESTAURANTS

- 1 Old Route 66 Family Restaurant
105 SOUTH OLD ROUTE 66, 0.2 MI
- 2 Dairy Queen Grill & Chill
324 WEST MAZON AVENUE, 0.2 MI
- 3 Casey's
100 WATTERS DRIVE, 0.3 MI
- 4 Love's Travel Stop
12 WEST NORTHBROOK DRIVE, 1.9 MI

COFFEE

- 1 Perfect Blend Coffee House & Music Studio, LLC
100 EAST MAIN STREET, 0.5 MI
- 2 McDonald's
13 EAST NORTHBROOK DRIVE, 1.9 MI
- 3 Dunkin'
10 EAST NORTHBROOK DRIVE, 2.0 MI

SHOPPING

- 1 Route 66 Tire & Auto
209 SOUTH OLD ROUTE 66, 0.2 MI
- 2 NAPA Auto Parts - Dwight Auto Parts
101 SOUTH OLD ROUTE 66, 0.2 MI
- 3 Route 66 Motors
UNITED STATES, 0.2 MI
- 4 CVS
106 WATTERS DRIVE, 0.3 MI
- 5 Great Lakes Ace
104 WATTERS DRIVE, 0.3 MI
- 6 Berkot's Super Foods
317 WEST WAUPANSIE STREET, 0.3 MI
- 7 Tractor Supply Co.
110 WATTERS DRIVE, 0.3 MI
- 8 CVS Pharmacy
106 WATTERS DRIVE, 0.3 MI

GYM

- 1 Prospect Fitness
106C WATTERS DRIVE, 0.3 MI
- 2 Sweat Factory
108 WATTERS DRIVE, 0.3 MI

SCHOOLS

- 1 Dwight Elementary School
801 SOUTH COLUMBIA STREET, 0.5 MI
- 2 Dwight Township High School
801 SOUTH FRANKLIN STREET, 0.7 MI
- 3 Trojan Athletic Facility
DWIGHT, 0.7 MI

ENTERTAINMENT

- 1 Midland States Bank
302 WEST MAZON AVENUE, 0.2 MI
- 2 VFW Post 2608
506 SOUTH OLD ROUTE 66, 0.2 MI

Dwight Fire Protection District

111 SOUTH PRAIRIE AVENUE, 0.4 MI

Dwight Police Department

209 SOUTH PRAIRIE AVENUE, 0.4 MI

Prairie Creek Public Library

501 CARRIAGE HOUSE LANE, 0.5 MI

Amtrak-MDT

783 WEST MAIN STREET, 0.6 MI

TRANSIT

- 1 Dwight Station
401 SOUTH COLUMBIA STREET, 0.3 MI

PARKS

- 1 Spencer Park
128 WEST SOUTH STREET, 0.3 MI
- 2 Florence W Garrett Park
DWIGHT, 0.4 MI
- 3 Harmony Park
109 EAST SEMINOLE STREET, 0.5 MI

NOTES



LIZ PICCIOLI

(815) 715-7165

LIZPICCIOLI@ATPROPERTIES.COM