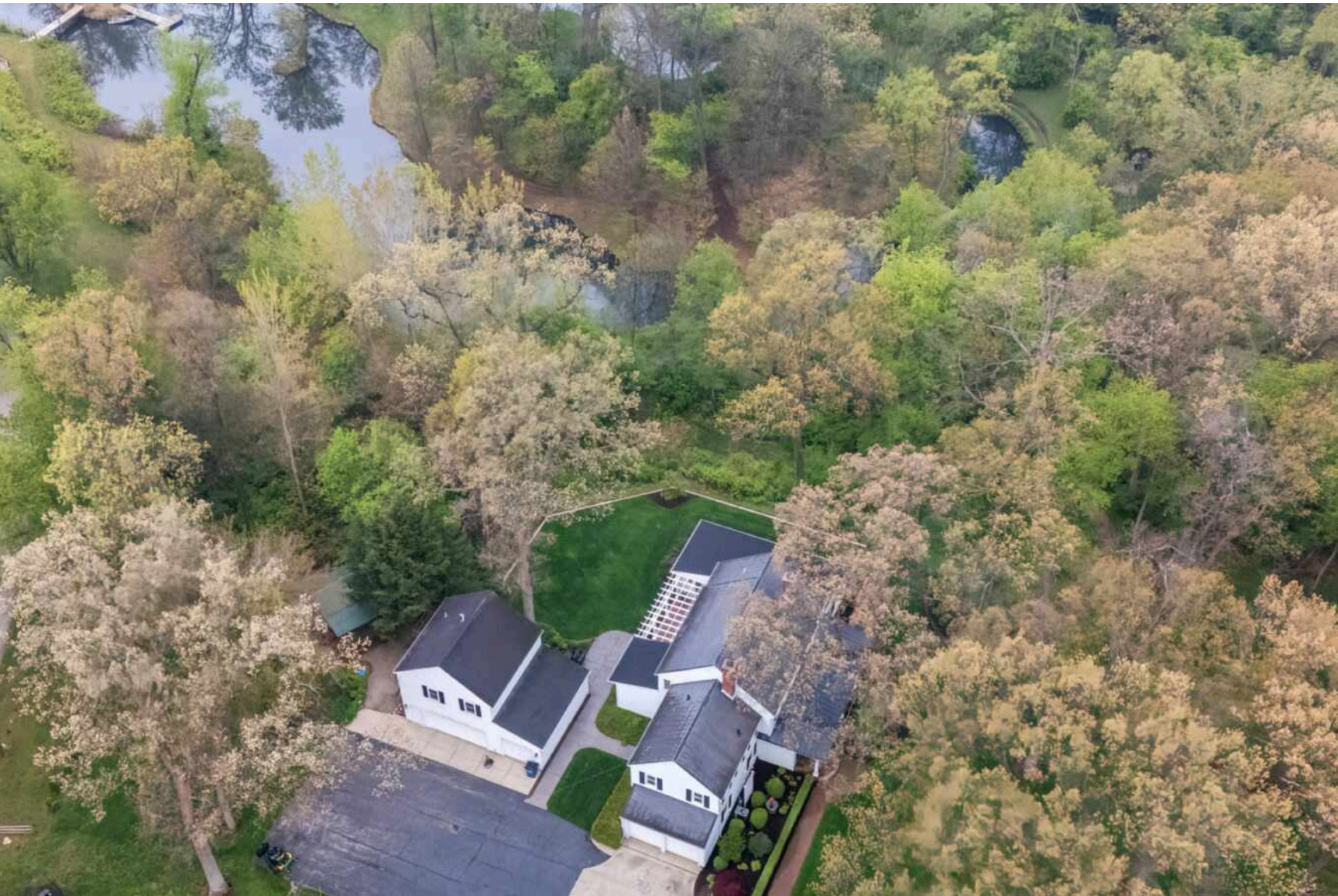


328 N 650 S
LAPORTE





ROOM DIMENSIONS

FAMILY ROOM : 14.0' × 11.0'

DINING ROOM : 20.0' × 13.0'

KITCHEN : 13.0' × 11.0'

PRIMARY BEDROOM : 10.0' × 18.0'

SECOND BEDROOM : 14.0' × 10.0'

THIRD BEDROOM : 11.0' × 12.0'

FOURTH BEDROOM : 14.0' × 8.0'

5 BEDROOM

2.1 BATH

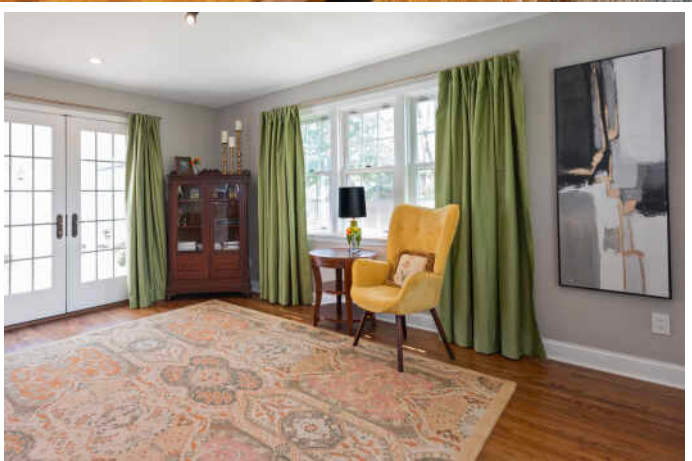
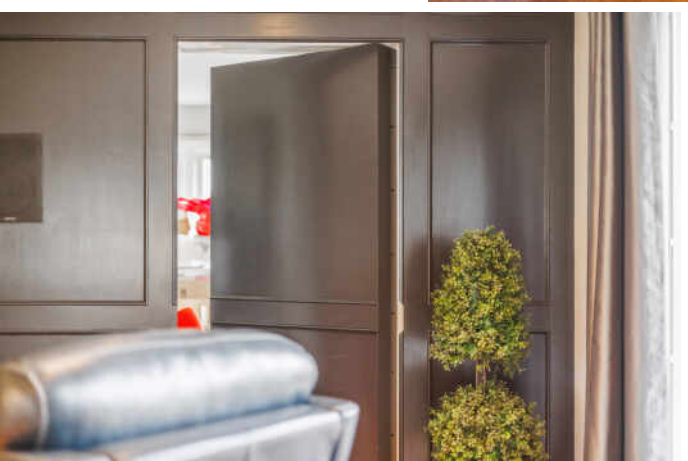
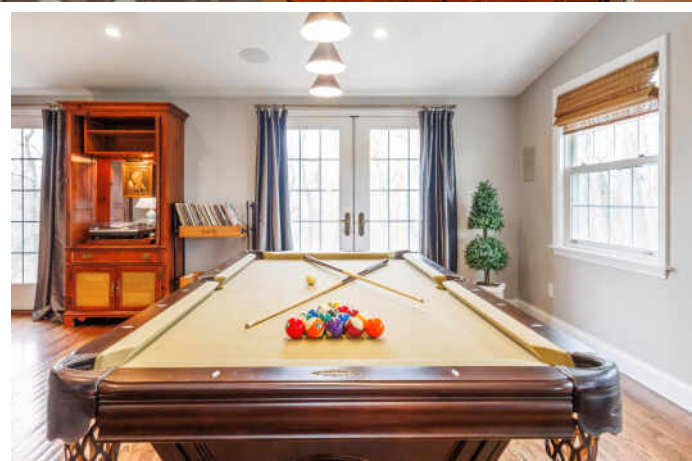
TAXES: \$2,259

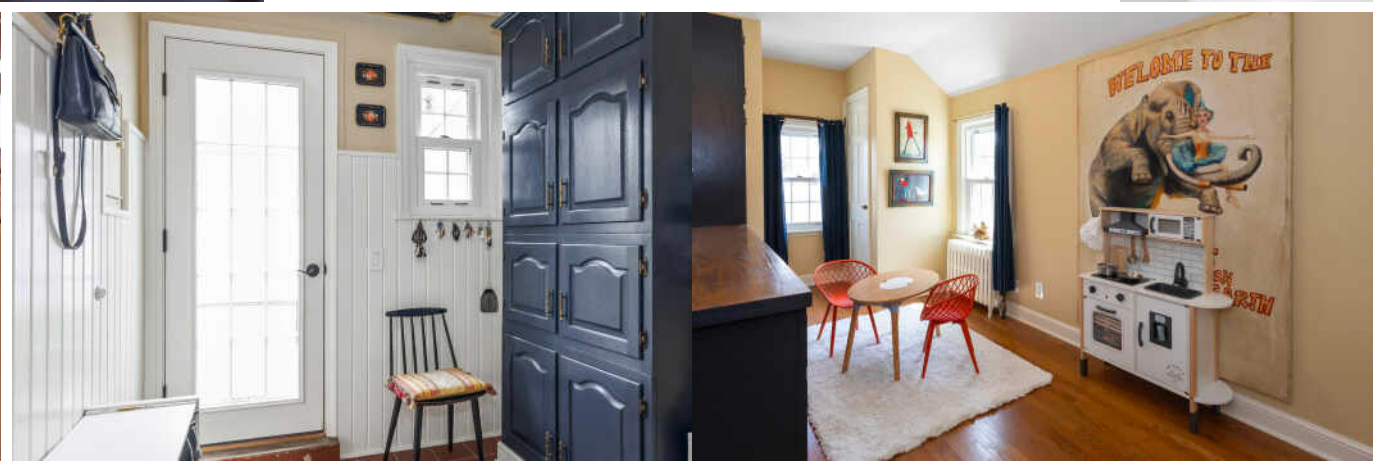
ARCHITECTURAL ELEGANCE WITH SOUL

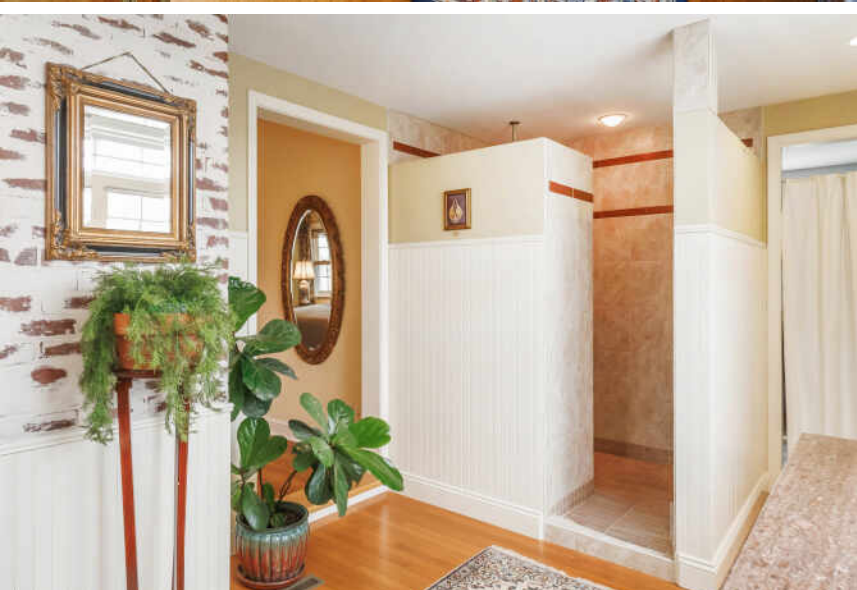
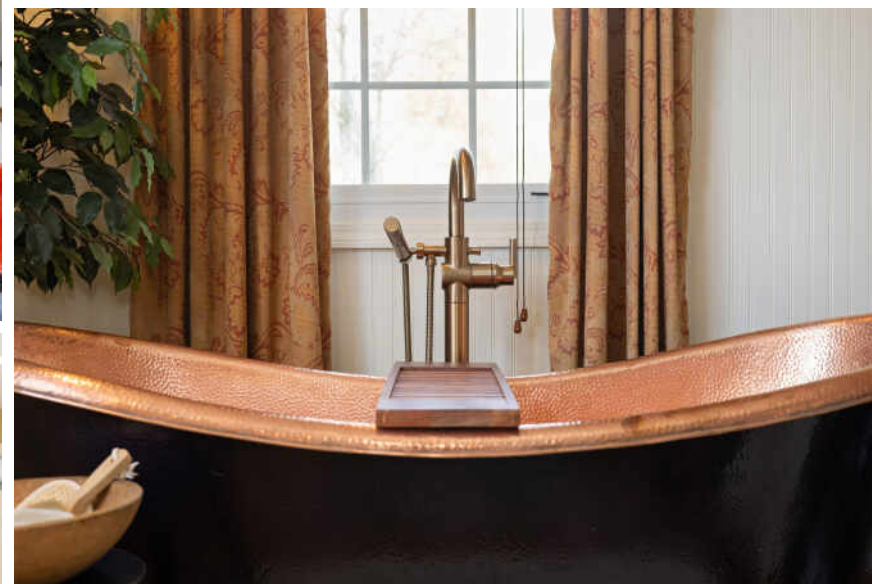
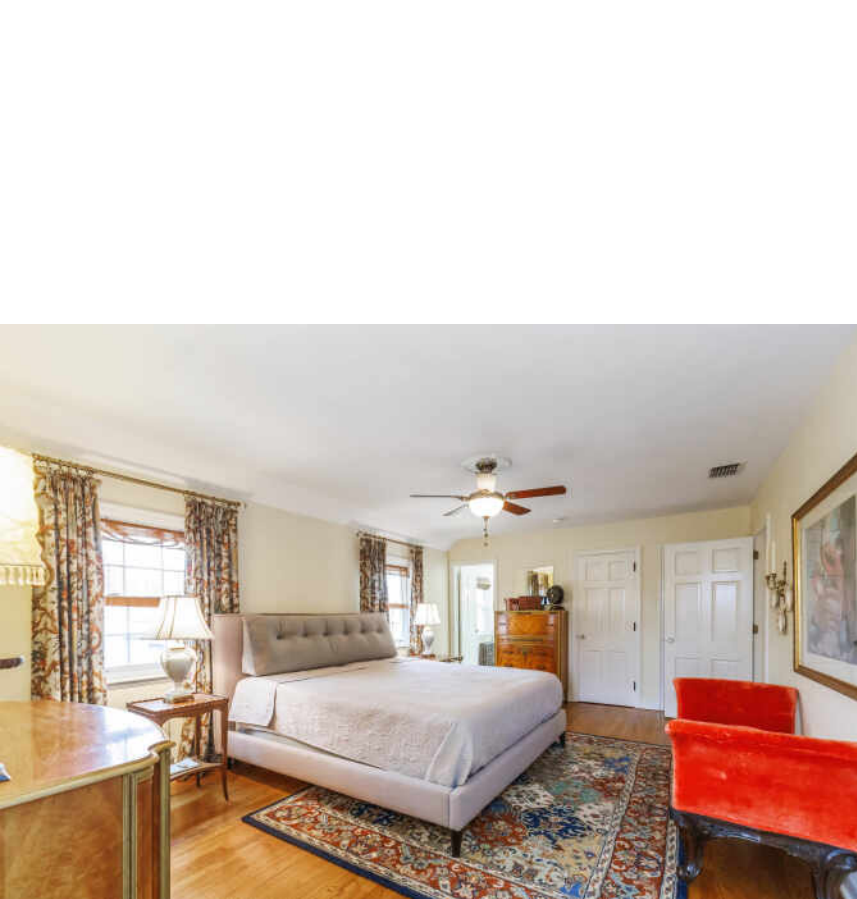
Where architectural character meets magazine-worthy finishes--this 5 bedroom, 2.5 bath main home was originally built in 1942 and now stuns with bespoke updates, dramatic design, and quiet sophistication. The heart of the home is the kitchen: Monogram appliances, layered textures, and a handcrafted island, all anchored by gorgeous tile and natural wood. Entertain with ease in the formal dining room, luxurious den with top-of-the-line audio and plenty of room for a pool table, hidden office and full bar, or out on multiple decks surrounded by lush landscaping and curated outdoor spaces. The primary suite evokes a luxury spa, with a copper tub, dual vanities, and custom dressing area. On-site a guest suite in the Carriage House above the three-car garage offers more than 500 sq ft of independent living space with a private bath, kitchenette, and serene views--perfect for guests, extended stays, or income potential. Every finish speaks to quality, and every room tells a story. Plan your tour today at this once-in-a-lifetime home.

- Hidden Designer-Integrated Office Alcove
- Dual-Sided Fireplace Connecting Living & Dining
- Chef's Kitchen & Full Butlers Bar
- Rich Hardwood Flooring & Artisan Tilework
- Private Walking Trails Leading to Scenic Pond
- 2.6 Acre Lush, Irrigated Landscaping with Curated English Garden
- 500 SqFt Guest Suite Above Additional 3-Car Garage















ELISHA TAYLOR

574-514-6759

269-469-0700

ELISHATAYLOR@ATPROPERTIES.COM



KRISTEN SHELDON

1 2693260139

2694690700

KRISTENSHELDON@ATPROPERTIES.COM



CHRISTIE'S
INTERNATIONAL REAL ESTATE