

334 BLOOMFIELD COURT, VERNON HILLS
GROSSE POINTE CIRCLE





ROOM DIMENSIONS

LIVING ROOM : 18' × 11'

KITCHEN : 16' × 10'

DINING AREA : 12' × 8'

PRIMARY BEDROOM : 17' × 13'

2ND BEDROOM : 14' × 12'

LOFT : 12' × 12'

RECREATION ROOM : 29' × 18'

ROOM TO ROAM!

Fantastic Value in the Stevenson High School District! This is a true two-story townhome with a full finished basement and a 2-car attached garage. It is not a 3-level rowhome that requires you to walk up a flight of stairs just to get to the kitchen and the main living space. The main level is an open floor plan that features a living room with a dramatic two-story ceiling with numerous windows allowing natural light to pour in. Real hardwood flooring on the first floor flows from the living room into the dining area and kitchen. The kitchen boasts granite counter tops, a large breakfast bar, a generous pantry and sliding glass door where you can step out to the patio that overlooks gorgeous green space. For your convenience, the laundry room and a powder room are also located on the first floor. Upstairs is a large primary suite with cathedral ceilings, a full bathroom with double-sink vanity and big walk-in closet. The second bedroom is quite roomy and has 2 double door closets. The loft provides great flex space and could easily be converted into a third bedroom if so desired. There is a second full bath upstairs as well. The full basement is finished as one expansive recreation room plus a utility room with some extra space for storage. Enjoy all the conveniences and community amenities that Vernon Hills has to offer!







AS FAR AS COMMUNITIES GO, **VERNON HILLS** WAS A LATE BLOOMER.

While it was settled in the 1850s, all was quiet on the development front until a residential community and golf course got things going in the 1950s, and the village quickly made up for lost time.

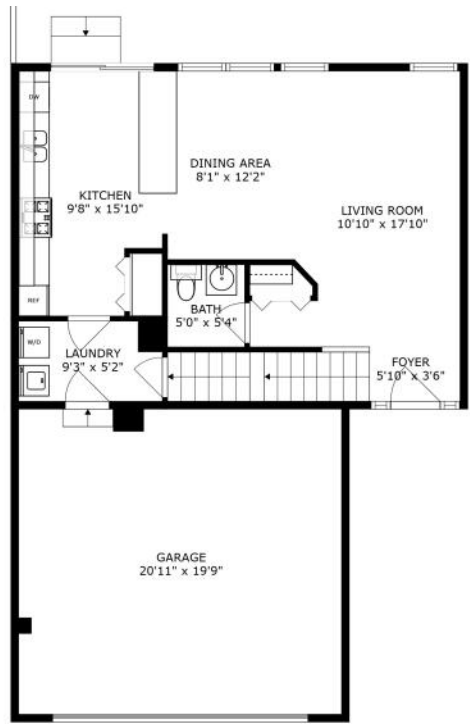
Situated on almost eight square miles in northwest Lake County, the village is now a busy retail hub and a mecca of shopping and dining.

Shopping is plentiful at Hawthorn Mall and numerous shopping centers stretched along Milwaukee Avenue and Townline Road. Dining options include an eclectic mix of cuisines.

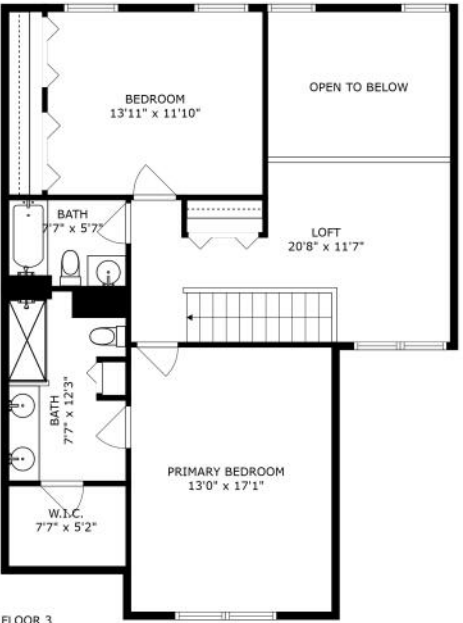
Residents also enjoy Loyola University of Chicago's Cuneo Mansion and Gardens, a historic site and popular setting for year-round private events and weddings.

Vernon Hills has a wide range of housing available from new construction to homes dating back to the first neighborhood in the 1950s.

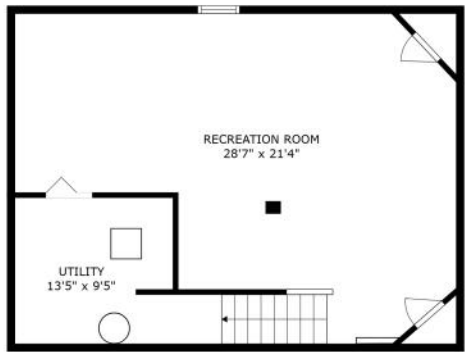
The community is accessible via the Tri-State Tollway and Vernon Hills Metra station, which provides transportation to Chicago's Union Station.



FLOOR 2



FLOOR 3



FLOOR 1



TERRY WILKOWSKI

REAL ESTATE BROKER

DIRECT: (847) 682-1549

TWILKOWSKI@ATPROPERTIES.COM



MARY GIBBS-MOODHE

REAL ESTATE BROKER

DIRECT: (847) 902-3357

MGIBBS@ATPROPERTIES.COM



CHRISTIE'S
INTERNATIONAL REAL ESTATE