

**335 E CULLERTON STREET**  
SOUTH LOOP



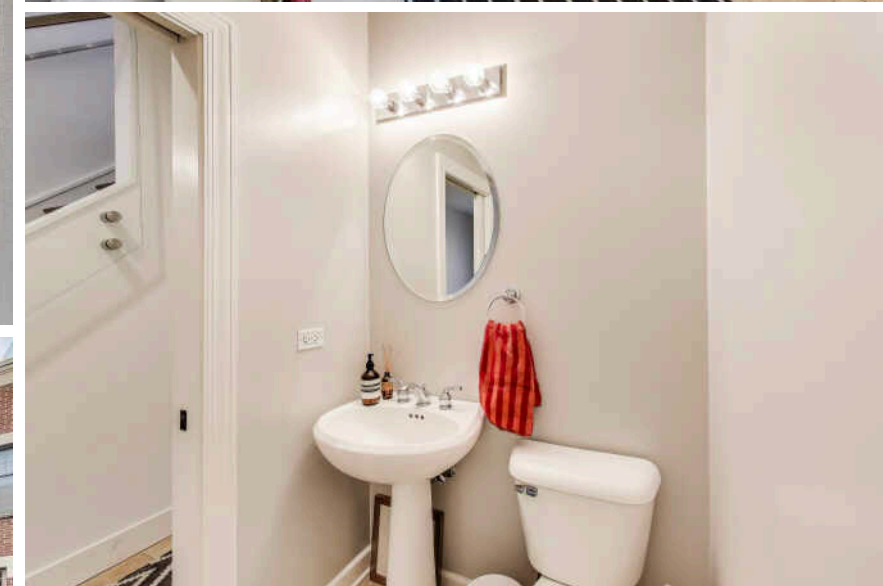
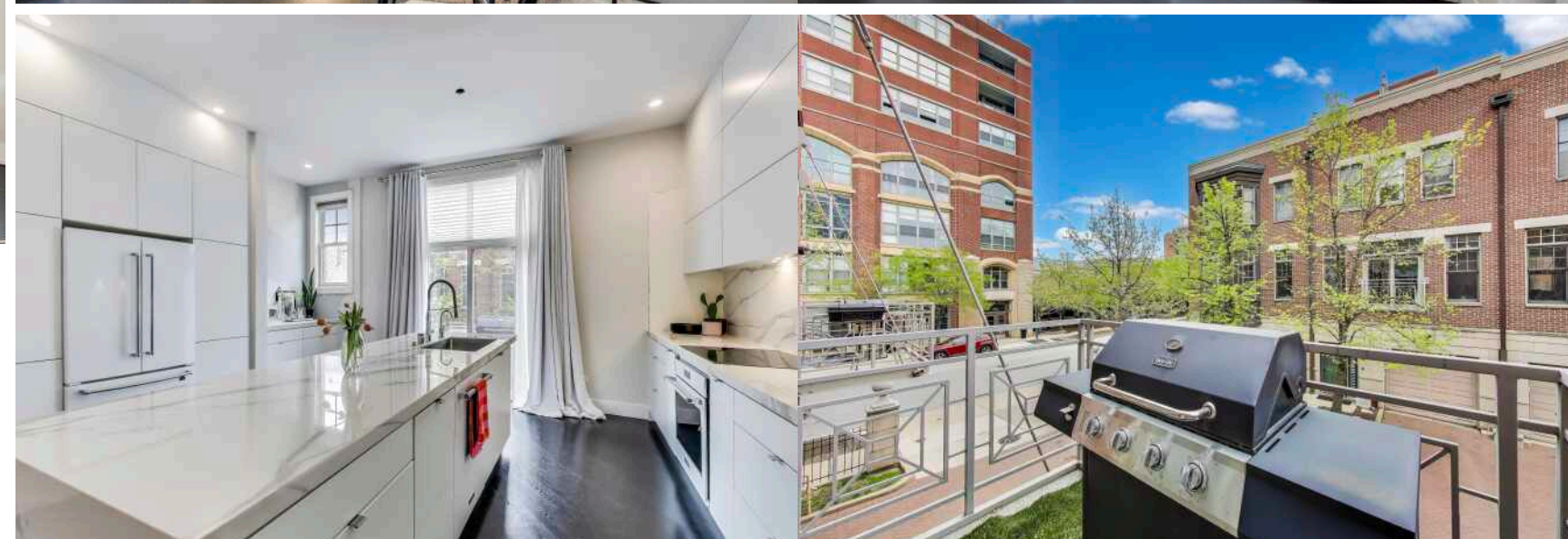
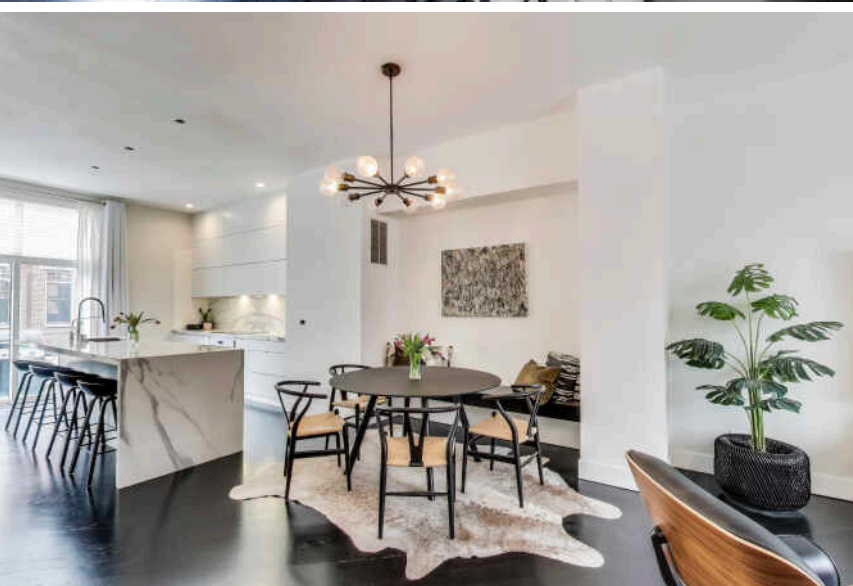
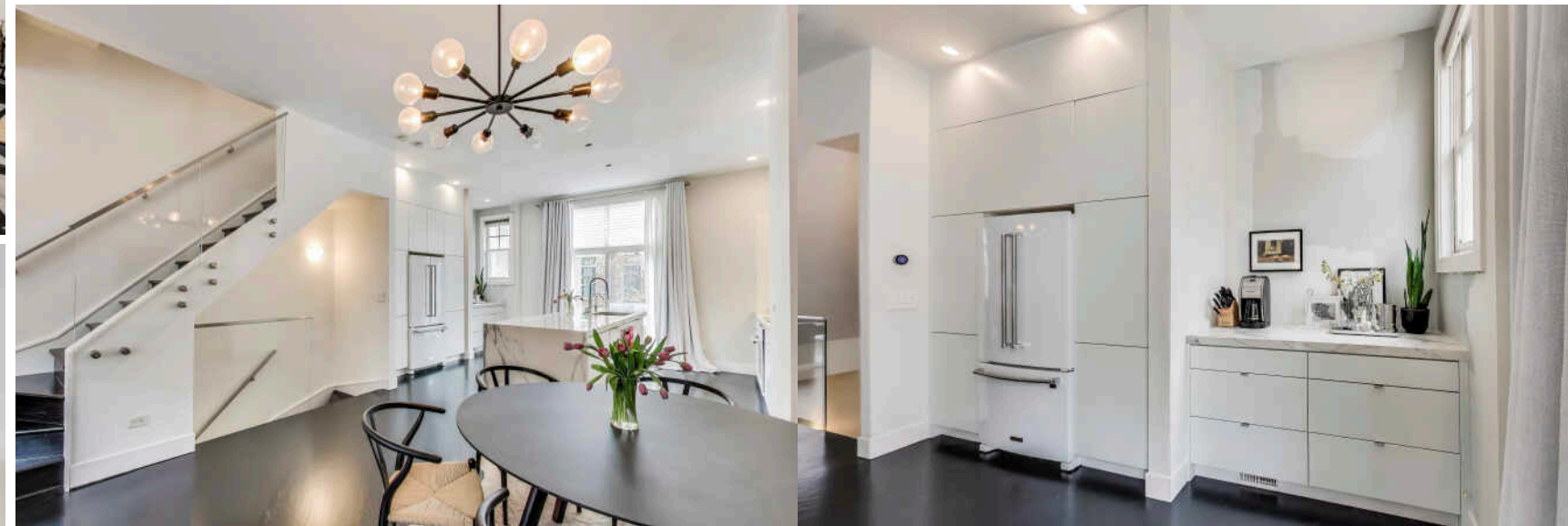




3 BEDROOM  
2.1 BATH  
TAXES: \$15,029  
ASSESSMENTS: \$215 / MONTH

This newly renovated townhome blends thoughtful design with refined detail for a look that's both elegant and inviting. Rich hardwood floors anchor the bright, open layout, complemented by soaring ceilings and oversized windows that fill the space with natural light. At the heart of the home, a showpiece kitchen features a striking 10-foot island, a designer backsplash, and a sleek induction cooktop. Glossy white cabinetry, brushed nickel hardware, and luxury appliances strike a perfect balance of style and functionality. The open-concept layout flows seamlessly from kitchen to living area, ideal for both everyday living and entertaining. Upstairs, tranquil bedrooms feel airy and serene, finished in soft neutrals with minimalist lighting and generous light. The bathroom reflects the home's cohesive aesthetic with a floating wood vanity, frameless glass shower, and chrome fixtures. Pairing clean lines and standout finishes, this home offers a modern, urban lifestyle with a designer's touch.













CHARACTERIZED BY TOWERING HIGH RISES AND HISTORIC POCKETS THAT REFLECT THE AREA'S STORIED PAST, THE **SOUTH LOOP** IS A DISTINCTIVE CHICAGO NEIGHBORHOOD.

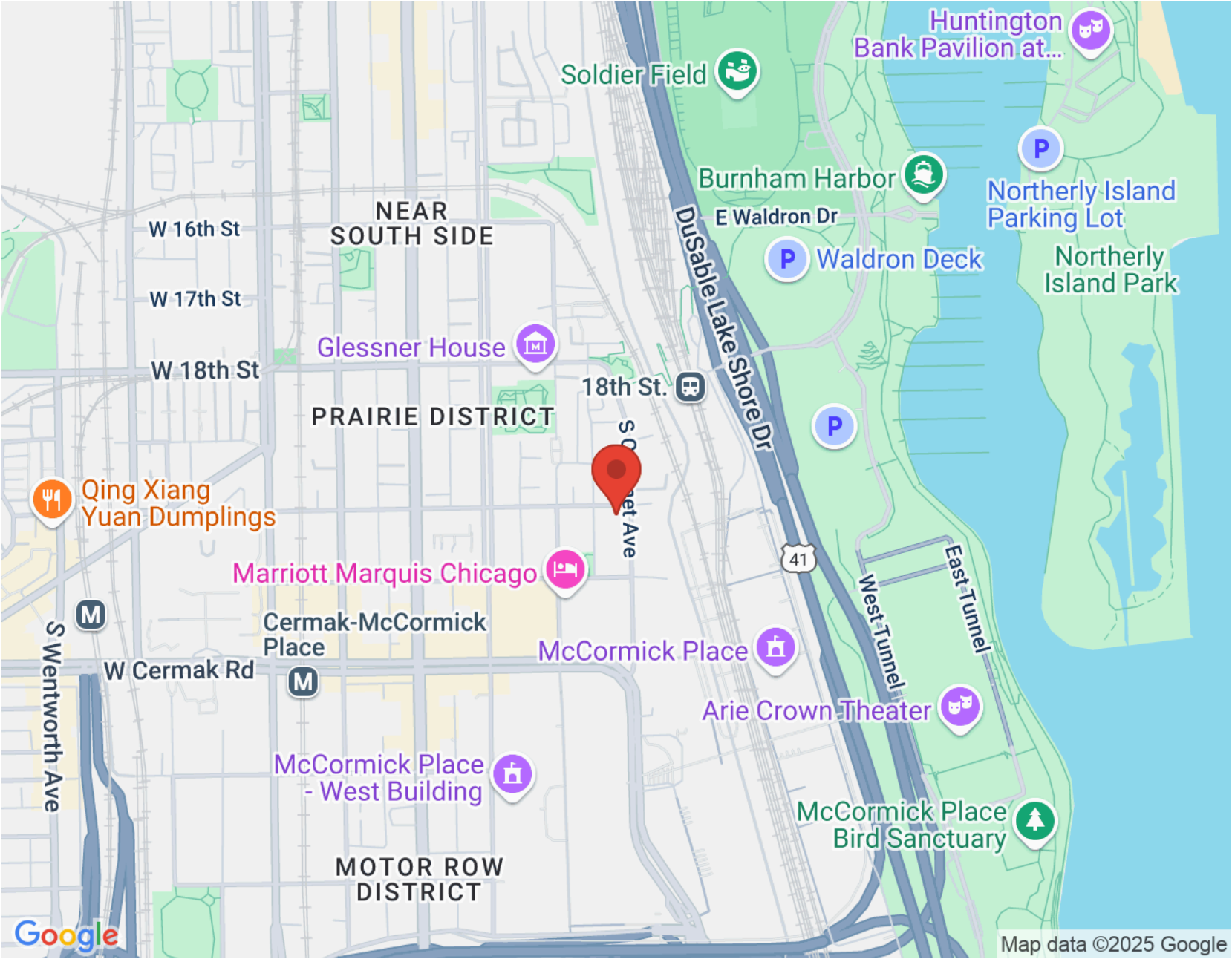
Chicago's original Gold Coast in the late 19th century, the South Loop was once home to the likes of Marshall Field, George Pullman, and Philip Armour. Today the vibrant neighborhood is known for its access to the lakefront, shops, restaurants, parks, Museum Campus, and The Loop.

The South Loop is comprised of several historic areas including Printer's Row, which features a number of buildings that have been converted into residential lofts, along with Motor Row District and Prairie Avenue District. Meanwhile, several apartment and condominium buildings are under construction, bringing thousands of new residences to the neighborhood.

The South Loop's housing boom has brought with it an influx of retailers along with eateries and nightlife on South Michigan Avenue. The Roosevelt Collection is a popular destination featuring a movie theater and an assortment of retailers.

Museum Campus is the cultural hub of the South Loop featuring attractions including the Field Museum, Shedd Aquarium, Adler Planetarium, and Soldier Field. Residents also enjoy being in close proximity to Northerly Island and public transportation including the CTA's Roosevelt station.





NOTES \_\_\_\_\_

\_\_\_\_\_

\_\_\_\_\_

\_\_\_\_\_

\_\_\_\_\_

\_\_\_\_\_

\_\_\_\_\_

\_\_\_\_\_

\_\_\_\_\_

\_\_\_\_\_

\_\_\_\_\_



## GENNA HILL

3124931929

312-254-0200

GENNA@ATPROPERTIES.COM

WWW.ATPROPERTIES.COM/SITE/GENNAHILL



## SUSAN TETRAULT

(312) 446-7716

SUSANTETRAULT@ATPROPERTIES.COM

WWW.SUSANTETRAULT.COM

**SUSAN TETRAULT TEAM**  
BUYING, SELLING, CONSIDER IT DONE



**CHRISTIE'S**  
INTERNATIONAL REAL ESTATE