

3374 SAGE CIRCLE, MUNDELEIN
SHELDON WOODS





ROOM DIMENSIONS

DINING ROOM : 14' × 11'

KITCHEN : 16' × 12'

PRIMARY BEDROOM : 17' × 14'

SECOND BEDROOM : 13' × 11'

THIRD BEDROOM : 14' × 11'

FOURTH BEDROOM : 14' × 11'

4 BEDROOM

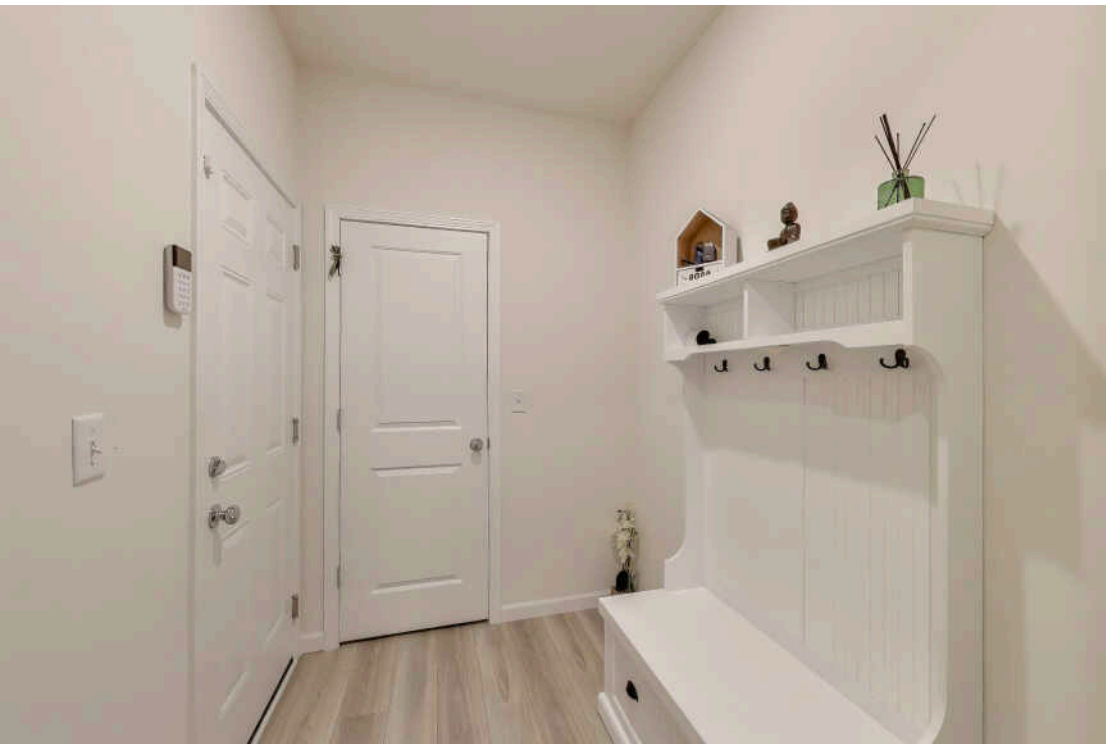
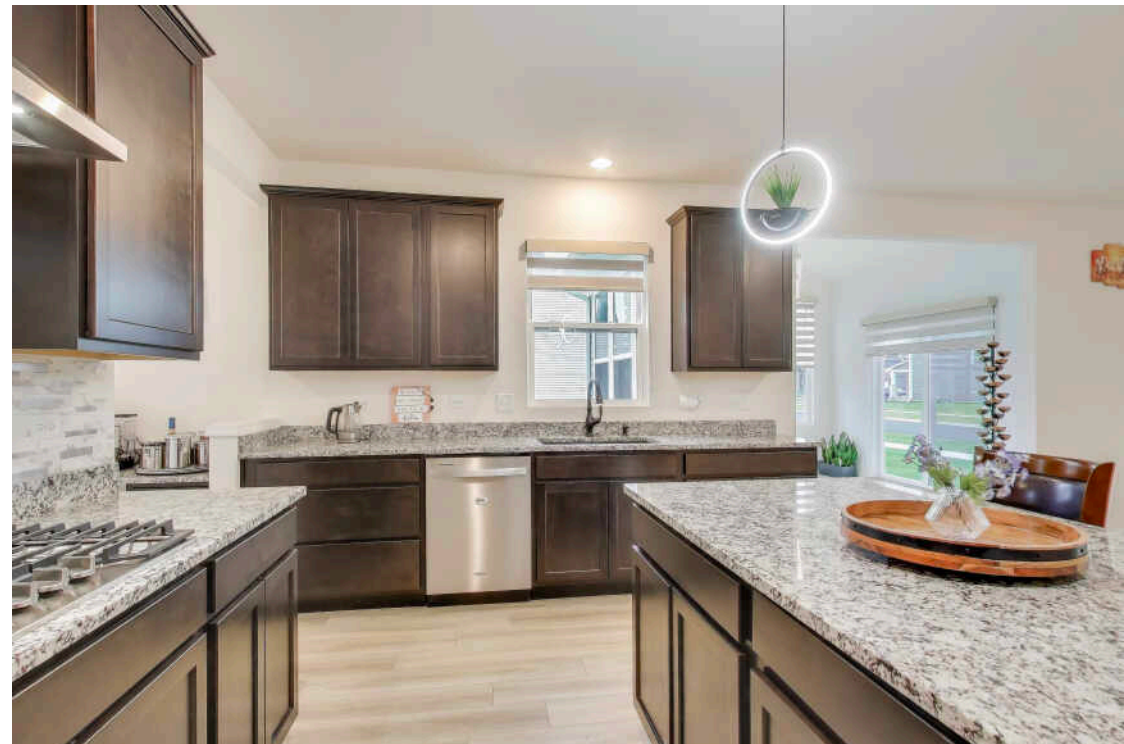
2.1 BATH

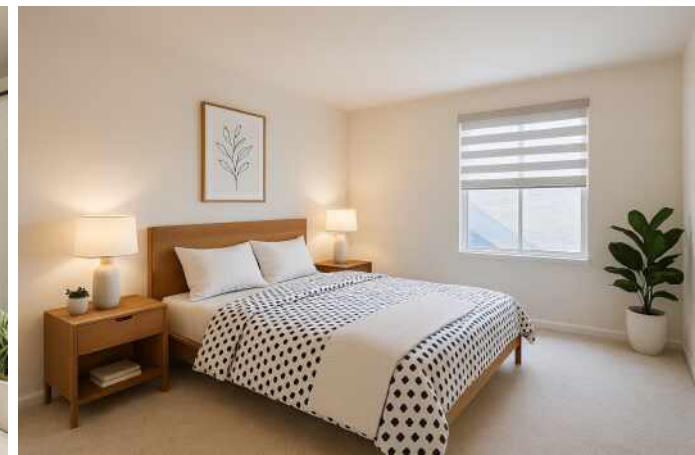
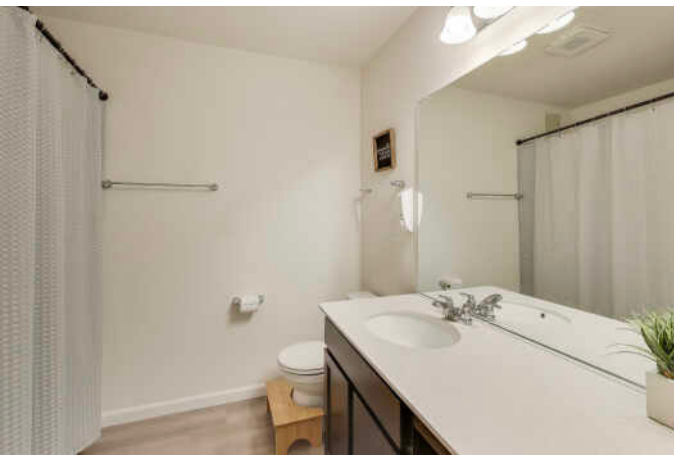
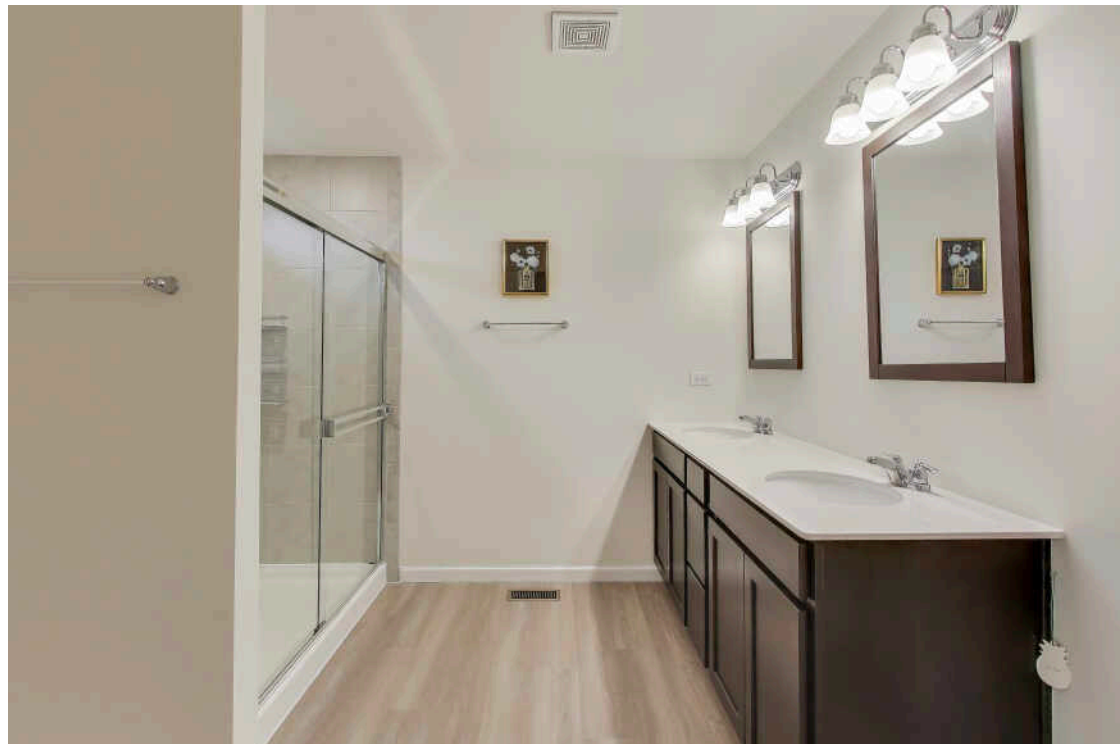
ASSESSMENTS: \$67 / MONTH

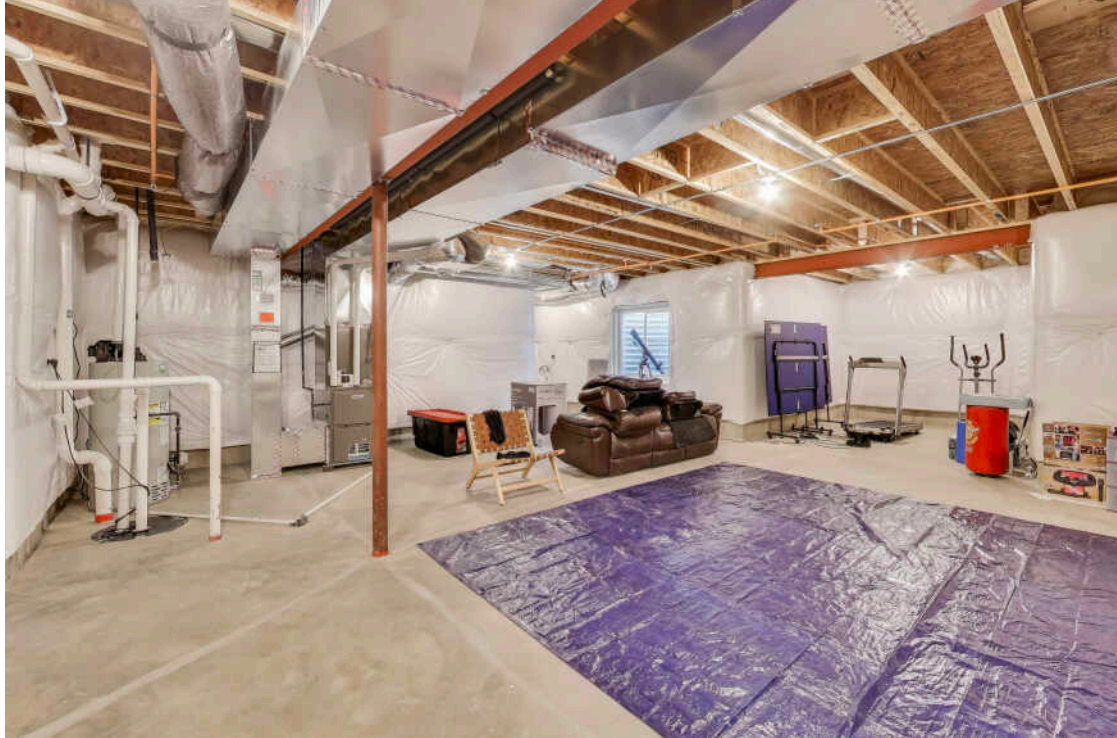
SHELDON WOODS-PRACTICALLY NEW!

Better than new construction because it is ready now and all of the extras have been added! The current owners are relocating for work and hate to leave this home behind. Fabulous new construction in Sheldon Woods. This is a Riverton model with the optional sun room added. Wonderful open floor plan where the great room, kitchen and sun room are all open to one another and stretch across the back of the home with an abundance of windows for natural light. The kitchen has the gourmet upgrade package which includes 42 inch cabinetry, cooktop with range hood vent, built-in microwave and oven and large single bowl sink to go along with the pantry closet, center island with breakfast bar seating and granite countertops. Current owners added a high-end smart refrigerator. The kitchen also has a versatile planning nook ideal for homework or additional meal prep and/or storage space. You will love the sun room with all its windows for enjoying your morning coffee or relaxing at the end of the day. There is a separate formal dining room for those special occasions and a main floor office/den that provides quieter space. Upstairs you will find four generously sized bedrooms all with walk-in closets plus a loft area providing some great flex space. The primary bedroom suite has a killer walk-in closet and a spacious full bath with dual sink vanity, step-in shower with transom window and separate water closet room. There is also a convenient and roomy laundry room with a utility sink and high-end washer and dryer on the second floor. The unfinished full basement is just shy of 1600 sq ft and has a ton of potential with a deep pour, 9 foot, foundation and roughed in plumbing for a full bath. Don't be fooled, the garage is a three car garage with the third spot being a tandem spot - great for storage if you don't have that third vehicle yet. Don't bother with building, just buy this one!











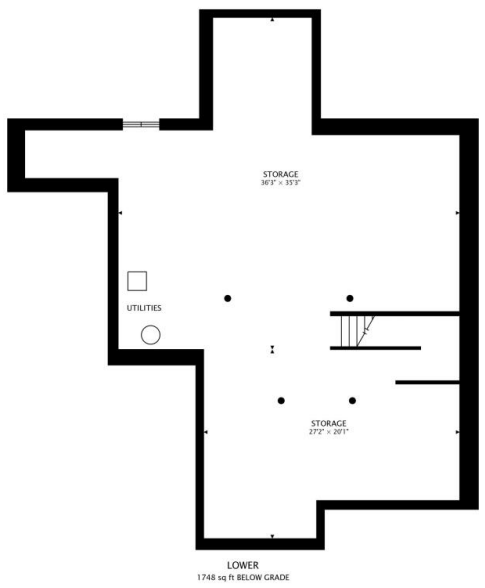
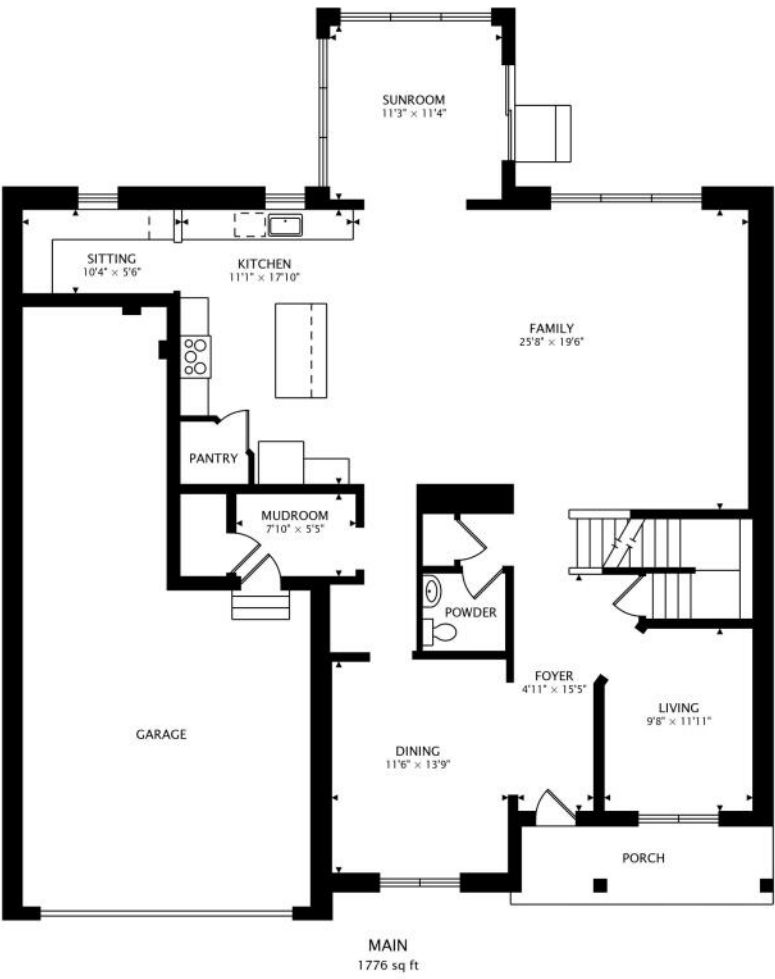
LOCATED IN THE HEART OF LAKE COUNTY,
MUNDELEIN IS A THRIVING COMMUNITY
THAT CONTINUES TO GROW DUE TO ITS
ABUNDANT RECREATIONAL
OPPORTUNITIES, FRIENDLY COMMUNITY,
AND CONVENIENT TRANSPORTATION
OPTIONS.

Mundelein celebrates its history with a popular annual festival that includes musical performances, a parade, carnival, car show, fireworks, and more. The village also has a craft beer festival, farmers market, and an art festival.

Once a popular resort area for city dwellers looking to escape the heat, Diamond Lake remains one of the village's gems. The recreation area, one of 33 in the community, stretches over 100 acres with a pristine lake, sandy beaches, and shaded picnic areas as well as a floating sports park, paddle boat, and kayak rentals.

In addition to the beach, residents can enjoy a golf course, bike trails, community theater, and museum. The village's downtown area has been redeveloped and there are various commercial areas.

Residential areas include a diverse mix of housing styles including new construction and mixed-use developments.





TERRY WILKOWSKI

REAL ESTATE BROKER

DIRECT: (847) 682-1549

TWILKOWSKI@ATPROPERTIES.COM



MARY GIBBS-MOODHE

REAL ESTATE BROKER

DIRECT: (847) 902-3357

MGIBBS@ATPROPERTIES.COM



CHRISTIE'S
INTERNATIONAL REAL ESTATE