

337 ADAM COURT

CARY





© Pix by Painter

LOCATED IN THE HIGHLY DESIRABLE STERLING RIDGE SUBDIVISION OF CARY, THIS STRIKING 5 BEDROOM, 3.5 BATH HOME ON A PREMIER END LOT CHECKS ALL THE BOXES!

Expect to be impressed with its desirable finishes and sought-after floor plan. This home has been meticulously maintained from top to bottom. The pristine kitchen has upgraded stainless steel appliances, an island, and opens directly to the family room. The primary suite is generous in size including a large en-suite bathroom with a double vanity, separate shower and soaking tub, as well as an organized walk-in closet. Easy living on the main floor with tons of flexibility and great living space including a welcoming foyer, living room, dining room, family room, laundry room, and so much more. The basement is the perfect hangout spot including a spacious bedroom, a full bathroom, and plenty of room for crafts, exercise, and storage. Details include tons of unobstructed windows, hardwood floors, great ceiling heights on all levels, and new HVAC and kitchen appliances. Picturesque outdoor space includes a sizable patio off of the back of the home, huge yard that has been professionally landscaped, and views of multiple ponds and Brittany Park. An attached 3 car garage and fantastic storage throughout complete this home. All of this on a great cul-de-sac street with easy access to all that Cary has to offer, including walking/biking trails, parks, retail, and dining to name a few!

5 BEDROOM

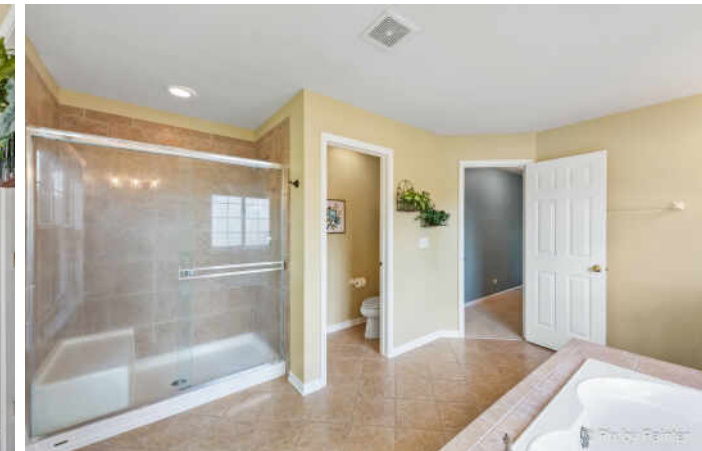
3.1 BATH

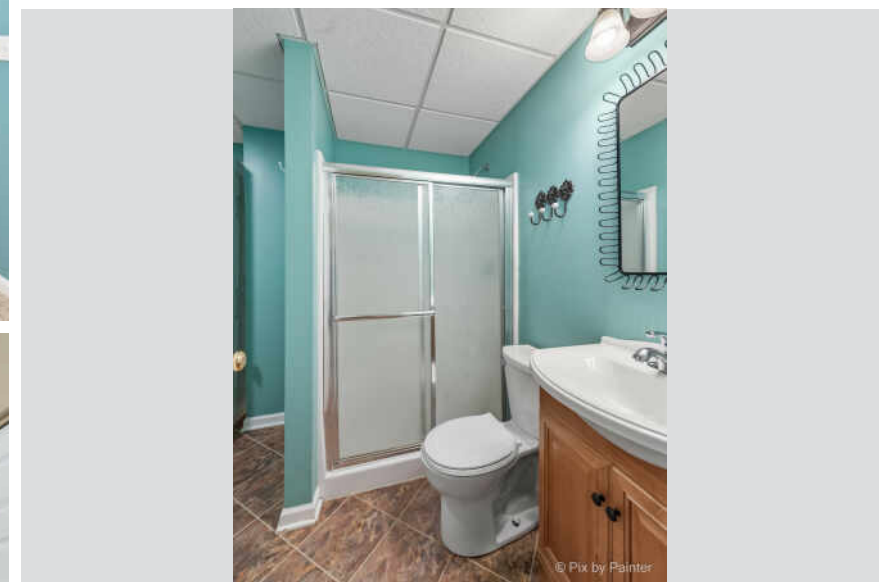
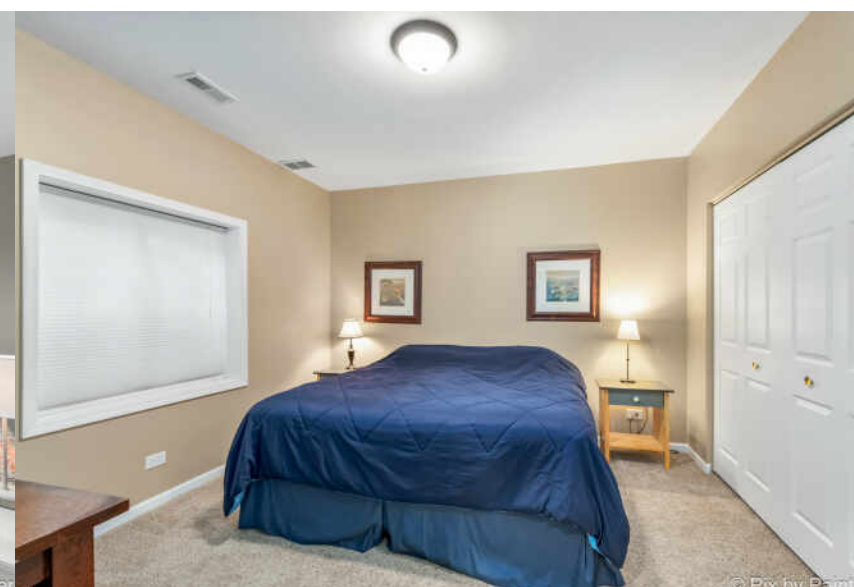
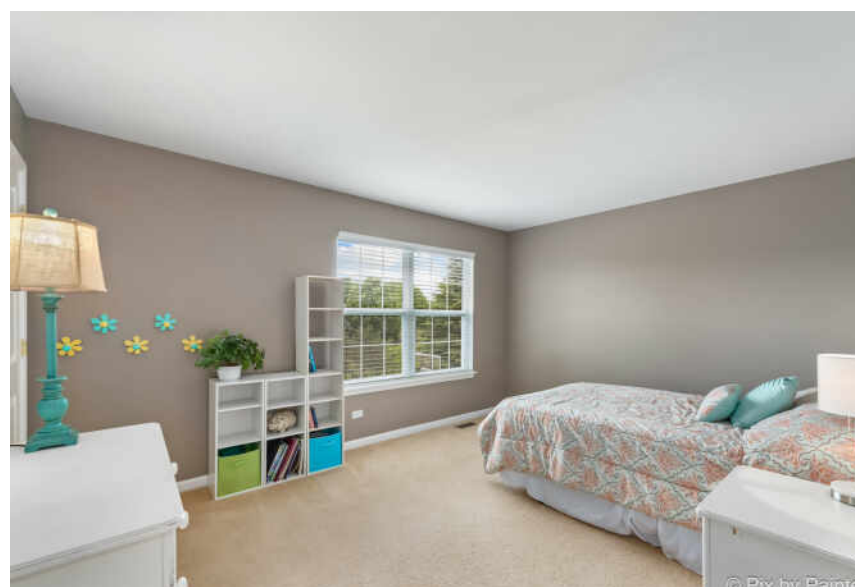
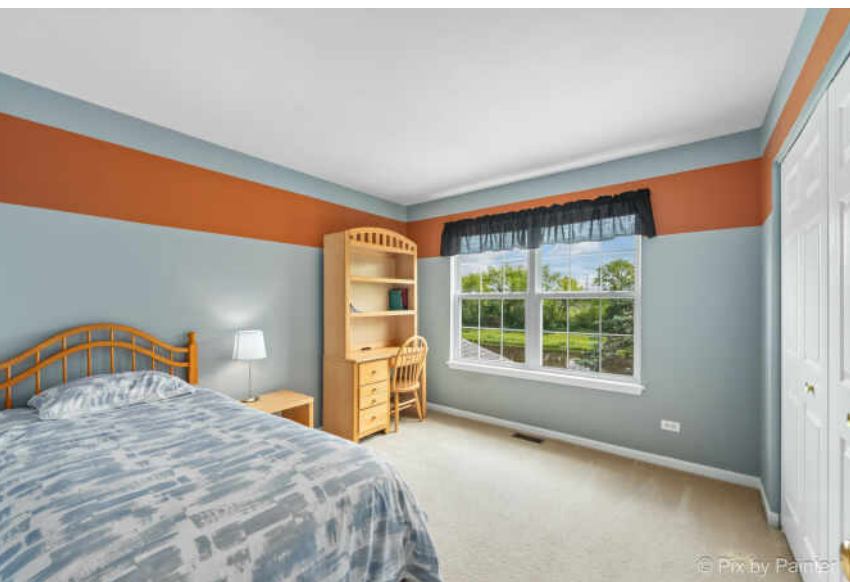
TAXES: \$12,579

ASSESSMENTS: \$740 / YEAR











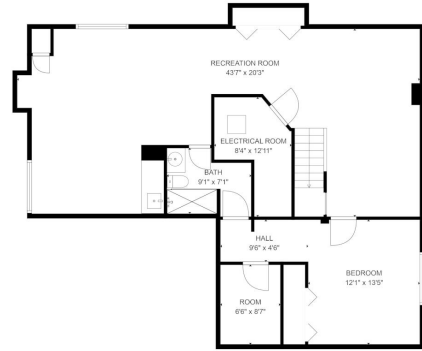
CARY IS A COMMUNITY ON THE MOVE.

Residents can bike, hike, canoe, kayak, cross country ski, skate, and golf at one of the village's three country clubs. There are also sports fields, playgrounds, parks, the Fox River, and popular Hollows Conservation Area.

A charming downtown, plentiful shopping, recreational areas, and a Metra station are just a few reasons why residents love this McHenry County village.

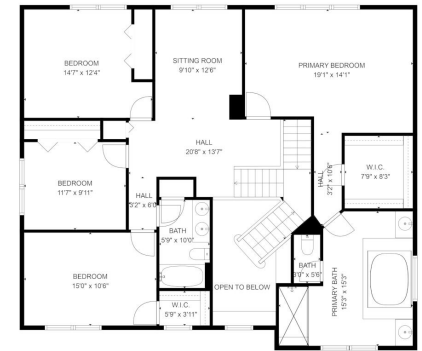
The Metra station is on the site of Cary's first railway station built in 1863. The railroad played a key role in Cary's evolution from a farming community to the suburb it is today. The railroad enabled farmers to sell their produce and pickles to Chicago and St. Louis buyers, expanding the local economy.

A range of housing is available including single-family homes, townhomes, and apartments.



Estimated areas
ALL MEASUREMENTS ARE IN FEET AND INCHES
ALL DIMENSIONS ARE APPROXIMATE
ALL DIMENSIONS ARE APPROXIMATE
ALL DIMENSIONS ARE APPROXIMATE

FLOOR PLAN CREATED BY CANNON AND ASSOCIATES, INC. FOR THE PROJECT. ALL RIGHTS RESERVED. NOT TO BE REPRODUCED OR TRANSMITTED IN ANY FORM OR BY ANY MEANS, ELECTRONIC OR MECHANICAL, WITHOUT PERMISSION IN WRITING FROM CANNON AND ASSOCIATES, INC.



Estimated areas
ALL MEASUREMENTS ARE IN FEET AND INCHES
ALL DIMENSIONS ARE APPROXIMATE
ALL DIMENSIONS ARE APPROXIMATE
ALL DIMENSIONS ARE APPROXIMATE

FLOOR PLAN CREATED BY CANNON AND ASSOCIATES, INC. FOR THE PROJECT. ALL RIGHTS RESERVED. NOT TO BE REPRODUCED OR TRANSMITTED IN ANY FORM OR BY ANY MEANS, ELECTRONIC OR MECHANICAL, WITHOUT PERMISSION IN WRITING FROM CANNON AND ASSOCIATES, INC.



Estimated areas
ALL MEASUREMENTS ARE IN FEET AND INCHES
ALL DIMENSIONS ARE APPROXIMATE
ALL DIMENSIONS ARE APPROXIMATE
ALL DIMENSIONS ARE APPROXIMATE

FLOOR PLAN CREATED BY CANNON AND ASSOCIATES, INC. FOR THE PROJECT. ALL RIGHTS RESERVED. NOT TO BE REPRODUCED OR TRANSMITTED IN ANY FORM OR BY ANY MEANS, ELECTRONIC OR MECHANICAL, WITHOUT PERMISSION IN WRITING FROM CANNON AND ASSOCIATES, INC.





EMMA KLEKER

972.890.1283

773-432-0200

EMMAKLEKER@ATPROPERTIES.COM



All specifications, features, designs, price, assessments, taxes and materials are subject to change without notice. Depicted floor plans and architectural renderings are only an artist's impression.

