

3406 FOREST RIDGE DRIVE
SPRING GROVE

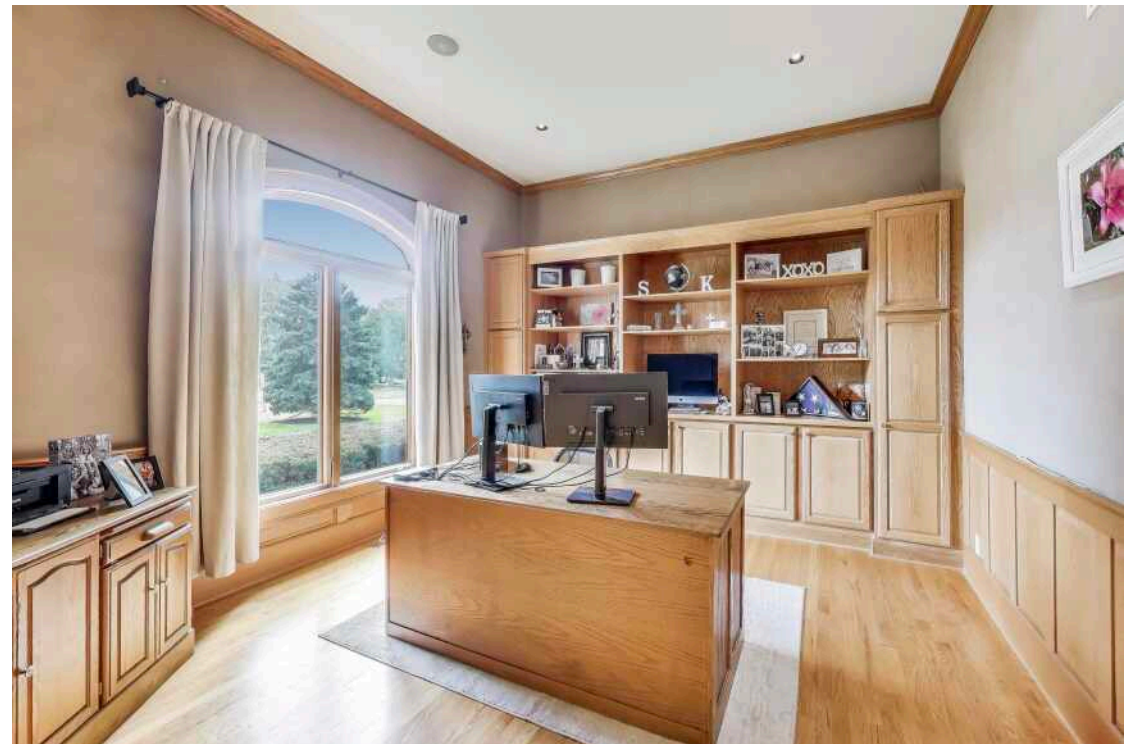


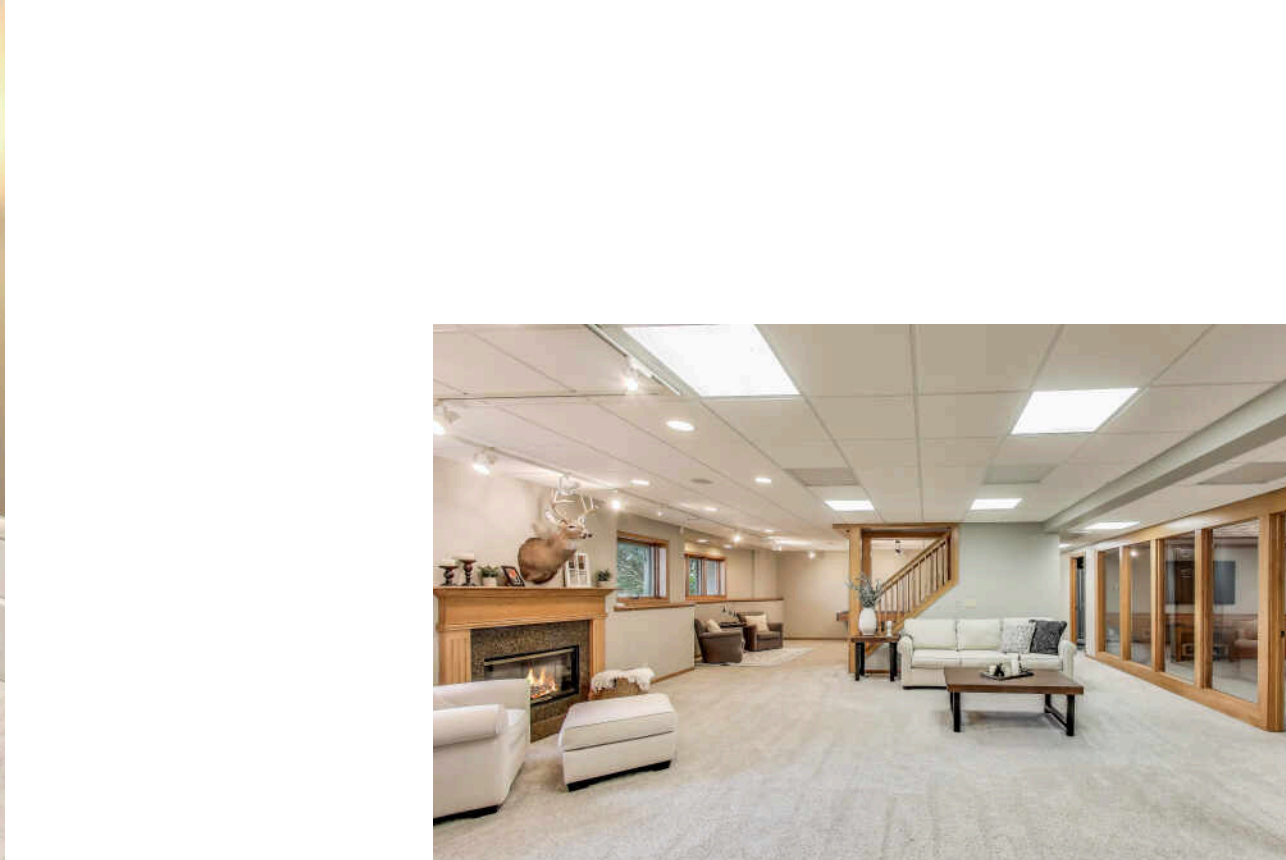


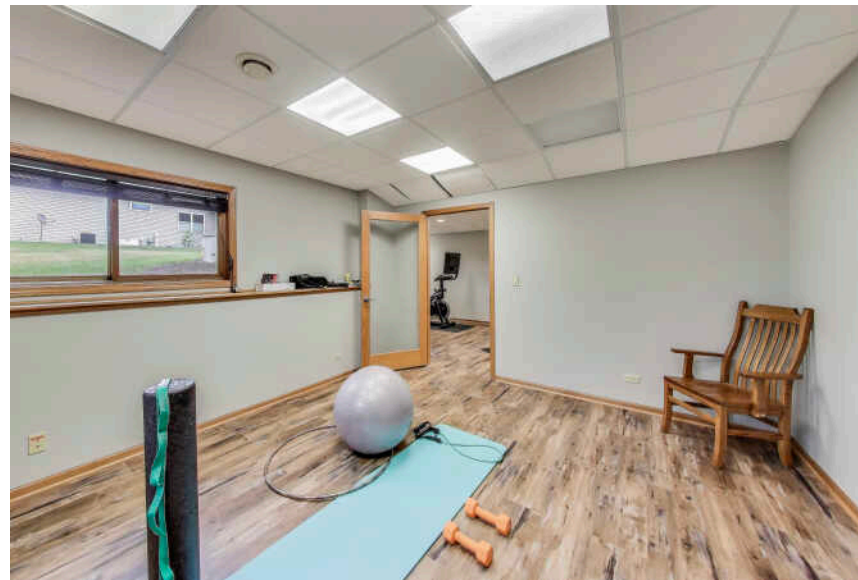
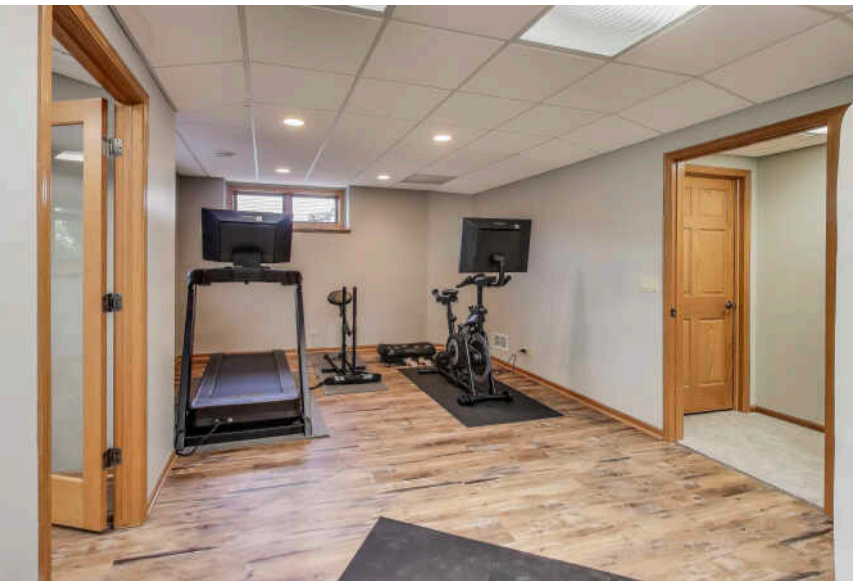
CUSTOM RANCH IN FOREST RIDGE ESTATES! Get ready to fall in love with this former KLM model home offers over 6200 sq feet of luxury space, set on a private wooded acre in one of Spring Grove's most desirable neighborhoods. With soaring ceilings, hardwood floors, custom millwork, and a floor-to-ceiling stone fireplace, this home blends timeless design with modern updates. The gourmet kitchen features granite counters, stainless appliances, breakfast bar, and a an all-seasons room that opens to a maintenance-free deck-perfect for entertaining! The split-bedroom layout includes a luxurious primary suite with spa bath and dual walk-in closets, plus two additional bedrooms and remodeled baths on the main level. The finished. English style lower level offers incredible versatility with a huge family room with 2nd fireplace, media room, office, exercise room, two bedrooms, and a full bath-ideal for guests or multi-generational living. Heated and air-conditioned 3 car garage. Your yard will look pristine year-round with the inground sprinkler system, and the generator will add peace of mind! Forest Ridge Estates offers scenic trails, wooded privacy, and abundant wildlife-all just minutes from Lake Geneva, Metra, shopping, and recreation. Luxury, comfort & nature-all in one! Recent updates include new furnace & A/C (2025), new driveway (2024), remodeled baths, new flooring, new carpet in primary and basement, new lighting, fresh paint, updated lighting, new appliances, roof (2015), professional landscaping and more!

5 BEDROOM
3.1 BATH
TAXES: \$12,083







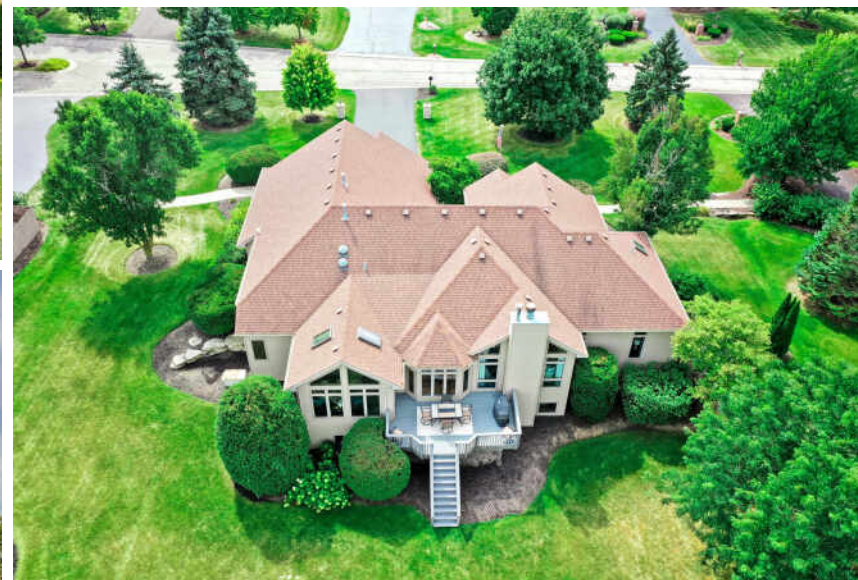




ONE OF MCHENRY COUNTY'S FASTEST-GROWING MUNICIPALITIES, **SPRING GROVE** DRAWS THOSE SEEKING SMALL-TOWN CHARM WHILE STILL ENJOYING CONVENIENT ACCESS TO CHICAGO.

Downtown Spring Grove is home to a small selection of restaurants and shops, but the town is perhaps better known and aptly named for the natural springs and groves of trees found throughout the area. There are several parks in the heart of Spring Grove, and in addition to plenty of green space, there are ball fields, fishing locations, and canoe launches. Spring Grove also offers access to Chain O'Lakes State Park, featuring hiking and biking trails, picnic areas, fishing, and an equestrian trail.

Located just south of the Wisconsin state line, Spring Grove has a variety of housing options from new construction to existing single-family homes. The landscape lends itself to sprawling plots of land that offer both privacy and natural beauty, as well as subdivisions that provide lively neighborhoods.

[illegible]



AMBER CAWLEY

(847) 293-4782

AMBERCAWLEY@ATPROPERTIES.COM

HOMESBYCAWLEY.COM



CHRISTIE'S
INTERNATIONAL REAL ESTATE