

340 ROMONA ROAD
WILMETTE





ROOM DIMENSIONS

LIVING ROOM : 21' x 15'

DINING ROOM : 13' x 12'

KITCHEN : 15' x 10'

PRIMARY BEDROOM : 17' x 23'

SECOND BEDROOM : 13' x 11'

THIRD BEDROOM : 13' x 10'

FOURTH BEDROOM : 12' x 10'

RECREATION ROOM : 13' x 35'

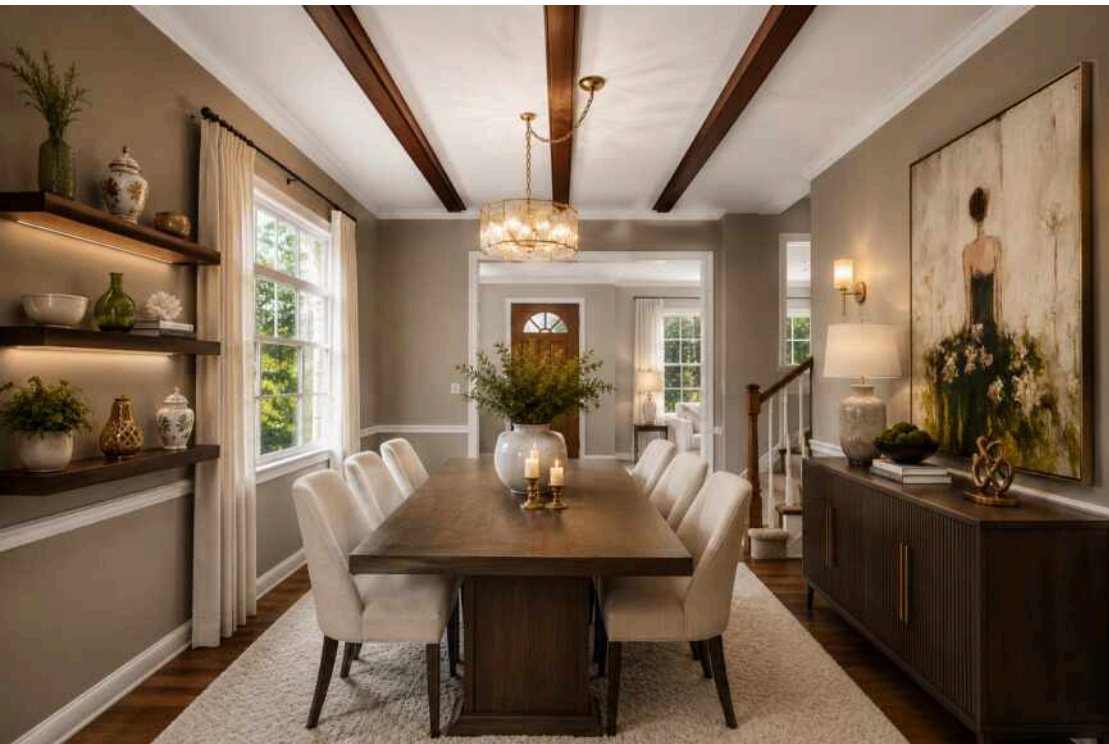
CHARMING WILMETTE HOME

Located in a sought-after Wilmette neighborhood, this spacious 4-bedroom, 2.1-bath home offers an exceptional opportunity to create your dream home. The main level features newly refinished hardwood floors, a spacious living room, separate dining room, eat-in kitchen, and three bedrooms with a hall bath. A substantial second-floor addition provides a generous primary suite complete with an updated bath. The lower level offers a large recreation room plus extensive unfinished space ready for your vision-ideal for a home office, fitness room or additional living area. With its generous space and flexible layout, the home offers endless possibilities for updates and personalization. Outside, enjoy a large backyard with patio and 2.1 car garage. Conveniently located within walking distance of award-winning schools, the Wilmette Recreation Center, and Centennial Park, featuring an outdoor pool, skating rink, and tennis courts. Just minutes to Old Orchard and Edens Plaza restaurants, shopping and I-94. This home is being sold in "as is" condition.

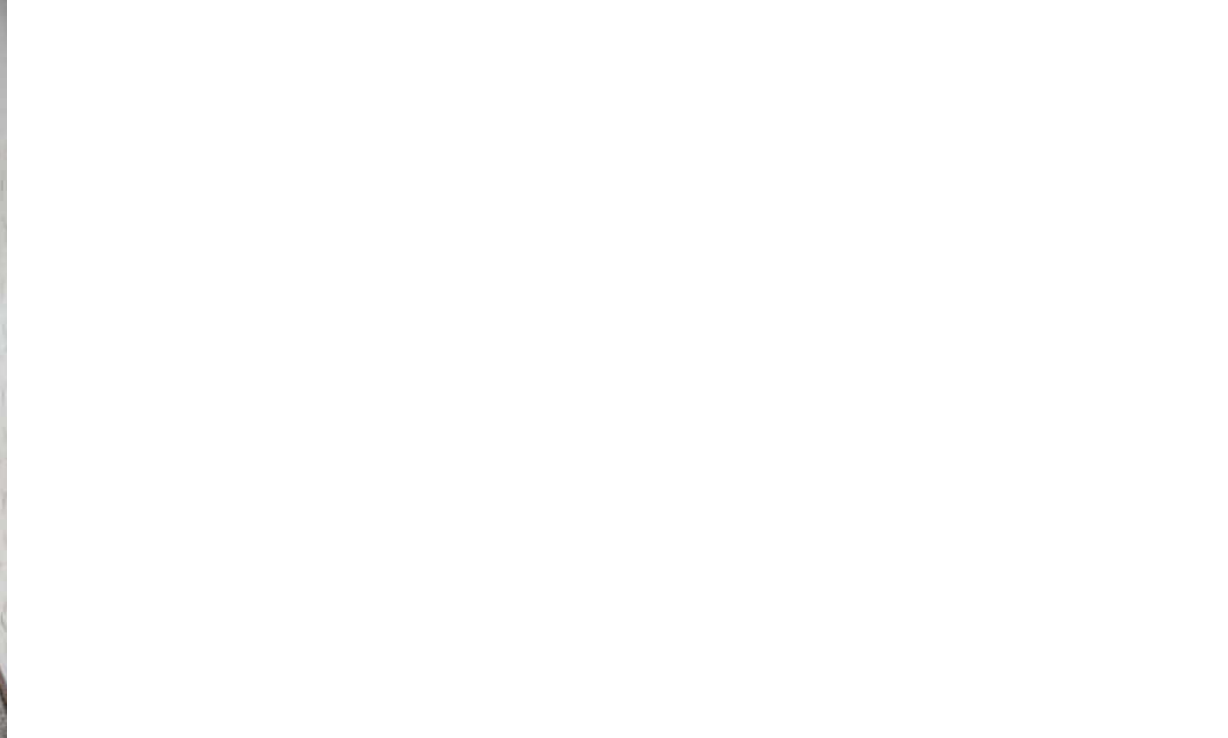
4 BEDROOM

2.1 BATH

TAXES: 12,027









Floor Plan Created By Cubicasa App. Measurements Deemed Highly Reliable But Not Guaranteed.



RANKED BY *CHICAGO* MAGAZINE AS ONE OF THE CHICAGO AREA'S BEST PLACES TO LIVE, **WILMETTE** IS A VIBRANT TOWN WITH A WEALTH OF AMENITIES.

When it comes to housing, there's no shortage of architectural styles and price points in this lakefront community. Quintessential Cape Cod, Victorian, and Colonial homes line the village's historic streets, many of which are paved with clay-fired bricks from the 1800s. In addition to single-family homes, there are beachfront condominiums and townhomes. While well-kept homes maintain Wilmette's rich architectural history in all of its glory, new construction attests to the village's enduring popularity.

Residents also have access to nationally recognized New Trier High School, located in Winnetka.

Wilmette's Metra station and access to I-94 make commuting to downtown Chicago a breeze, but there's plenty of reasons to stay local. At the heart of town is the Village Center, where you'll find specialty stores, restaurants, and the Wilmette Theatre. Along Sheridan Road there is Plaza del Lago, providing more shops and services to locals. Meanwhile, ample recreational activities are available at Gillson Park and beach, Wilmette Harbor, and the Centennial Recreation Complex, which includes swimming, tennis, and ice skating.



STEVE SAMUELS

(773) 610-3301

847-881-0200

STEVESAMUELS@ATPROPERTIES.COM

STEVESAMUELS
EXPERIENCE MATTERS

