

3414 N. SEMINARY, #3
LAKEVIEW



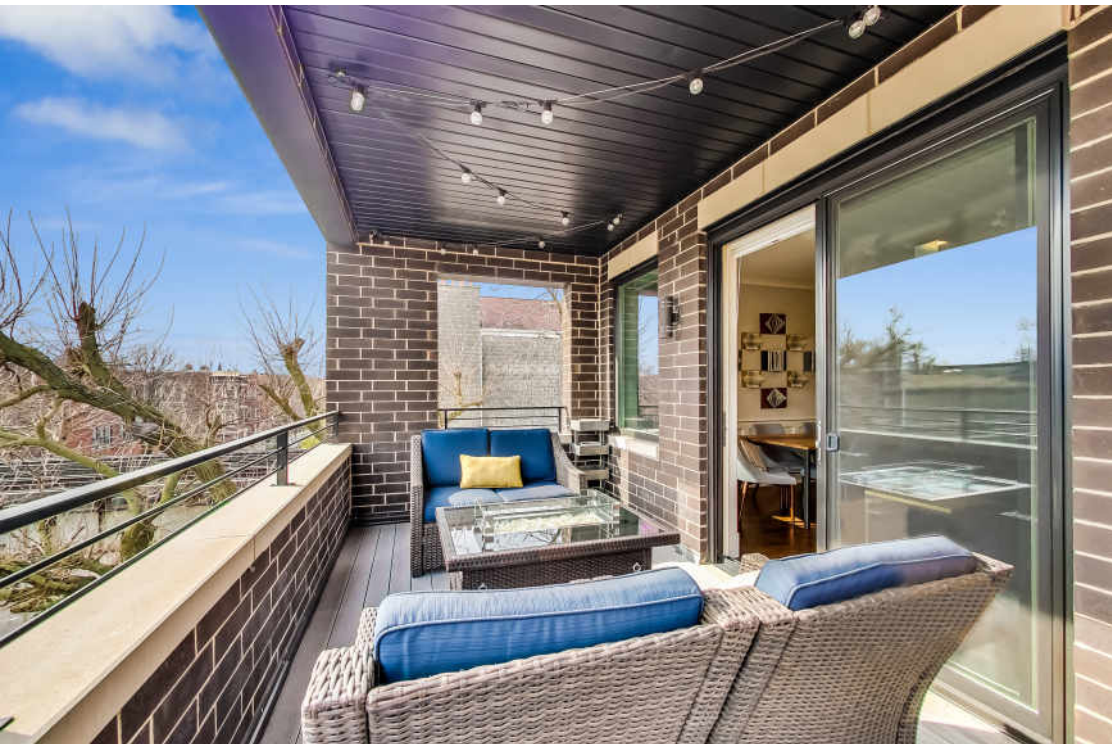


ROOM DIMENSIONS
LIVING/DINING ROOM : 17' × 17'
KITCHEN : 10' × 9'
FRONT TERRACE : 17' × 9'
PRIVATE ROOF DECK : 71' × 18'
PRIMARY BEDROOM : 14' × 12'
WALK IN CLOSET : 6' × 5'
SECOND BEDROOM : 10' × 9'
REAR BALCONY : 11' × 6'
DRY BAR AREA : 10' × 6'

2 BEDROOM
2 BATH
TAXES: \$8,846.48
ASSESSMENTS: \$200

STUNNING LAKEVIEW PENTHOUSE WITH A TRULY EXCEPTIONAL PRIVATE ROOF DECK

- Three blocks to the heart of Southport Corridor, three blocks to the el (Belmont, Southport, Addison), three blocks to Wrigley Field. From your private roof deck you can hear and feel the roar of the crowd at Wrigley, and feel like you're at the Summer Wrigley Concerts! When it's time to host parties again, you will be ready!
- Outdoor space abounds in this beautiful home featuring a large covered front terrace, a rear deck and an unbelievable fully built-out roof deck with Wrigley and skyline views accessed via an interior stair.
- The ~1300 sf roof deck was completed by Chicago Roof Deck and Garden in May 2018 and all wood was recently re-stained. This private roof deck features Trex decking, a kitchen with built-in gas grill, honed granite counters, tons of storage, a custom cedar pergola and privacy wall, ipe wood trim, built-in gas fireplace, four outdoor (all weather) speakers, cafe lights, outdoor accent lighting and space for an outdoor TV! Truly a dream roof deck, and it can be yours to enjoy this summer!
- The interior of this unit is gorgeous as well with a stunning all-white kitchen with a SubZero fridge, Wolf range, Bosch DW, quartz counters, white shaker-style cabinetry and a fantastic floor plan with plenty of room for a dining table, floor-to-ceiling sliding doors out to the covered front terrace, a gas fireplace with remote start, wainscoting, and so much more. Oak hardwood floors throughout.
- Custom AV setup includes built-in ceiling speakers throughout. Nest temperature control and Nest CO2/smoke detectors and built-in alarm system.
- Spacious primary en suite bedroom with high-end bathroom featuring double sinks, steam shower, marble tile, and heated floor.
- Covered parking included. Extra (built out) storage on ground level. Unbelievable location and a true walker's paradise!

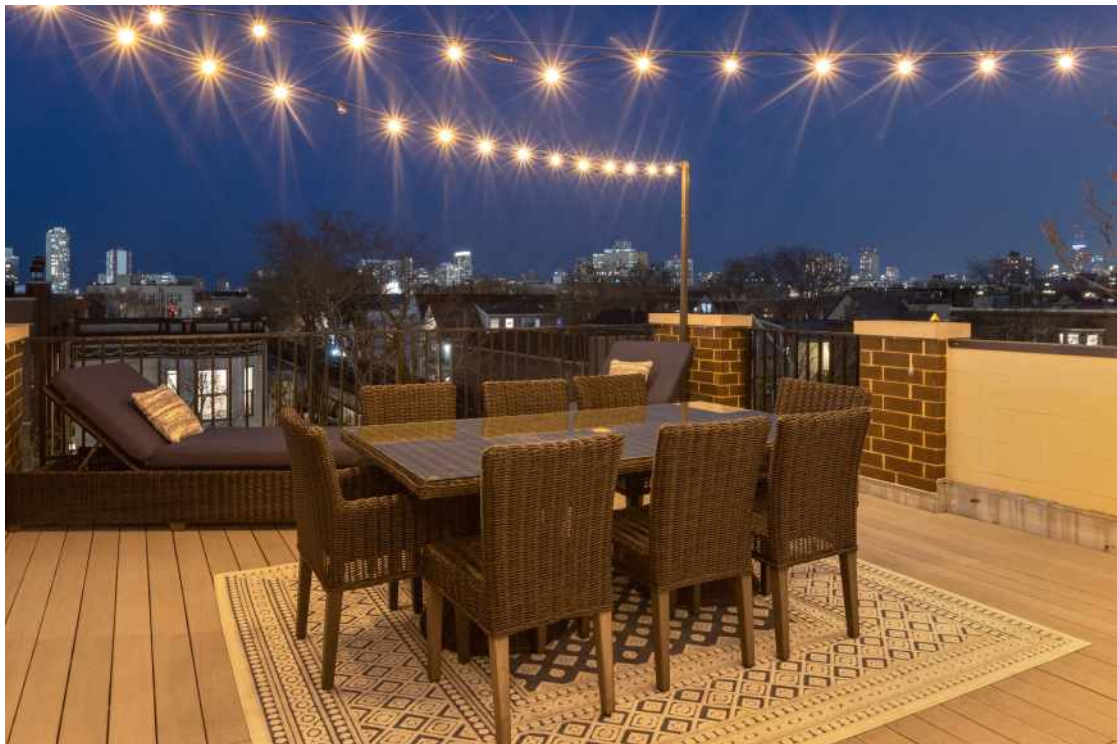


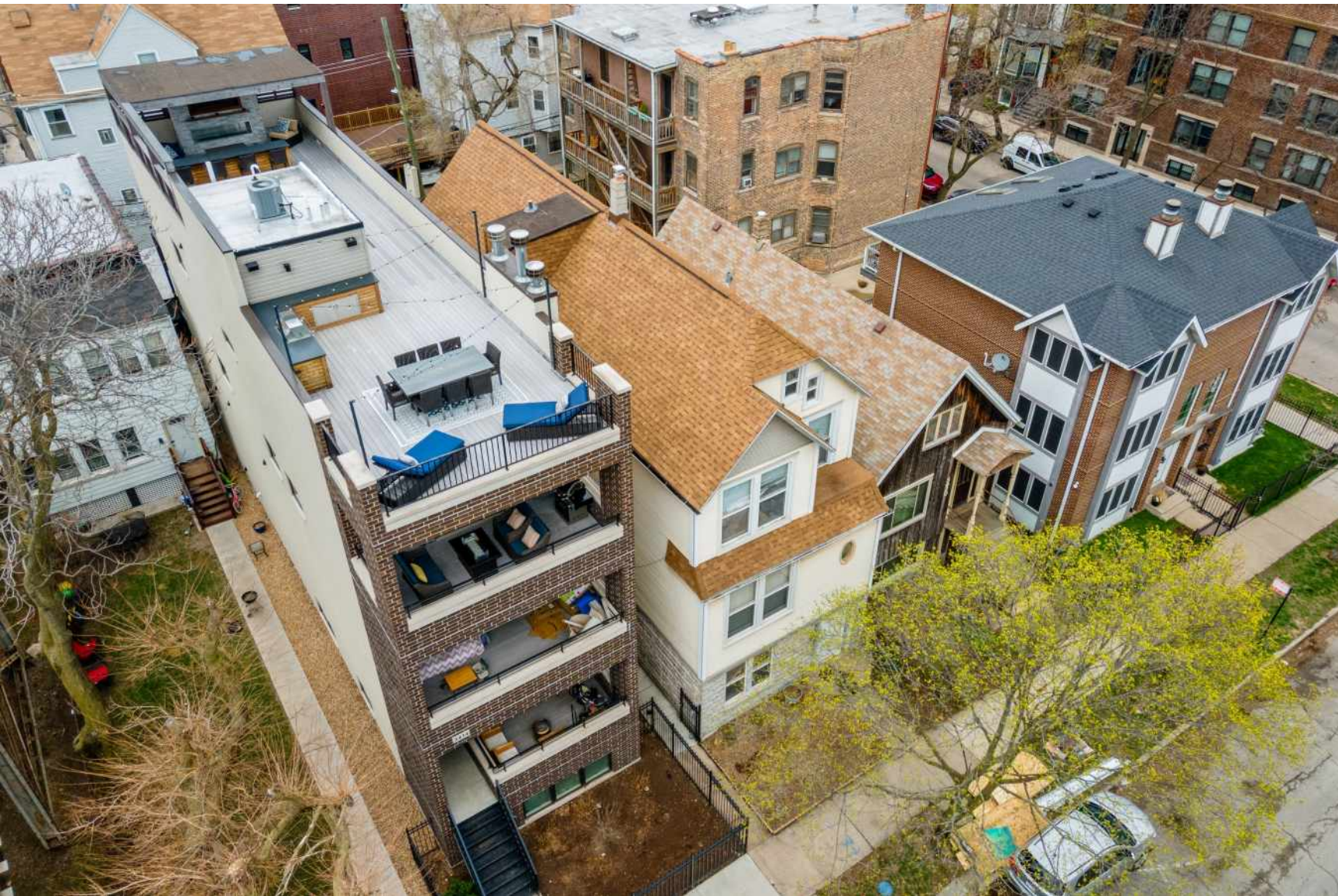
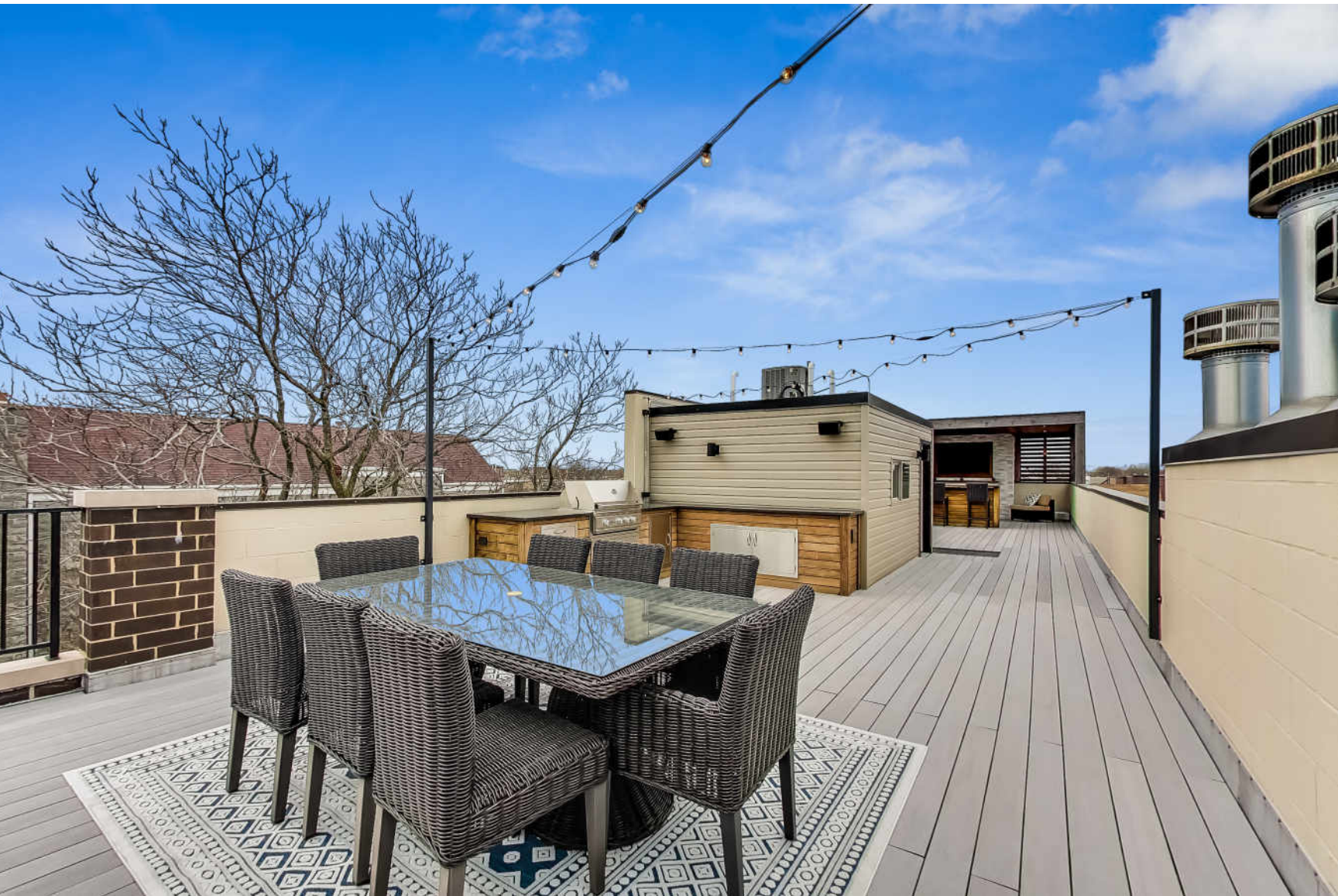


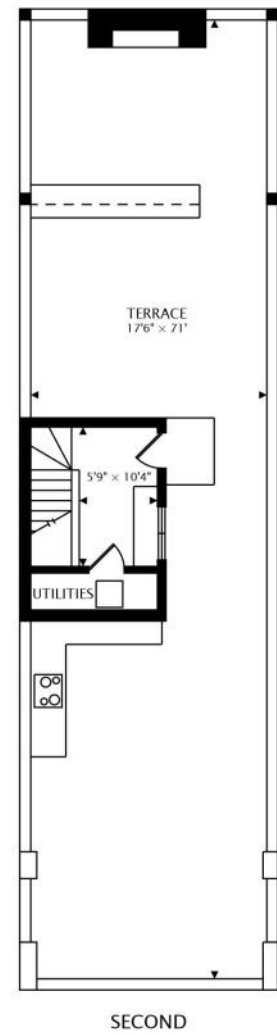
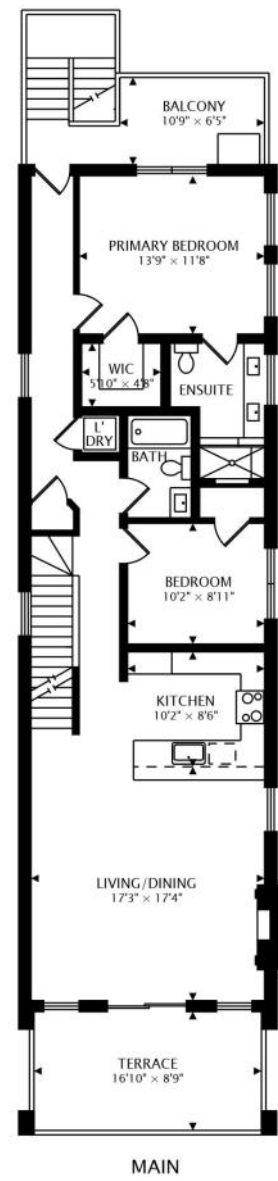


© VHT STUDIOS











SARAH MAXWELL

(773) 991-2943

SMAXWELL@ATPROPERTIES.COM

WWW.SARAHMAXWELLGROUP.COM

Sarah Maxwell
Group



3414NSEMINARY3.INFO