

**342 EVERETT AVENUE**  
CRYSTAL LAKE





Classic two-story colonial in charming Crystal Lake neighborhood!

Completely renovated and move-in ready offering light, bright & airy open floor plan for today's modern family needs.

Gorgeous gourmet kitchen includes all new white Shaker cabinetry, quartz countertops & stainless steel appliances open to eating area and spacious family room with fireplace!

Gleaming hardwood floors throughout the first level, all new white millwork. Inviting master retreat with updated en suite bath featuring porcelain tile flooring.

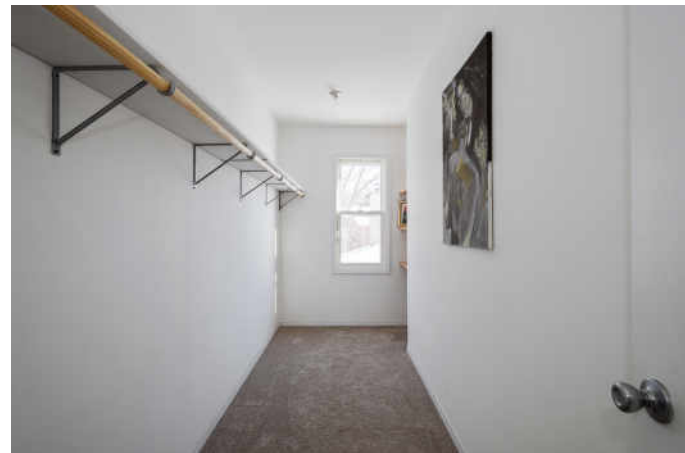
Ample lower level offers finished 4th bedroom and awaits your design ideas for an additional ~1500 SF of living space.

Huge private fully fenced back yard for your outdoor entertaining enjoyment. Stunning!

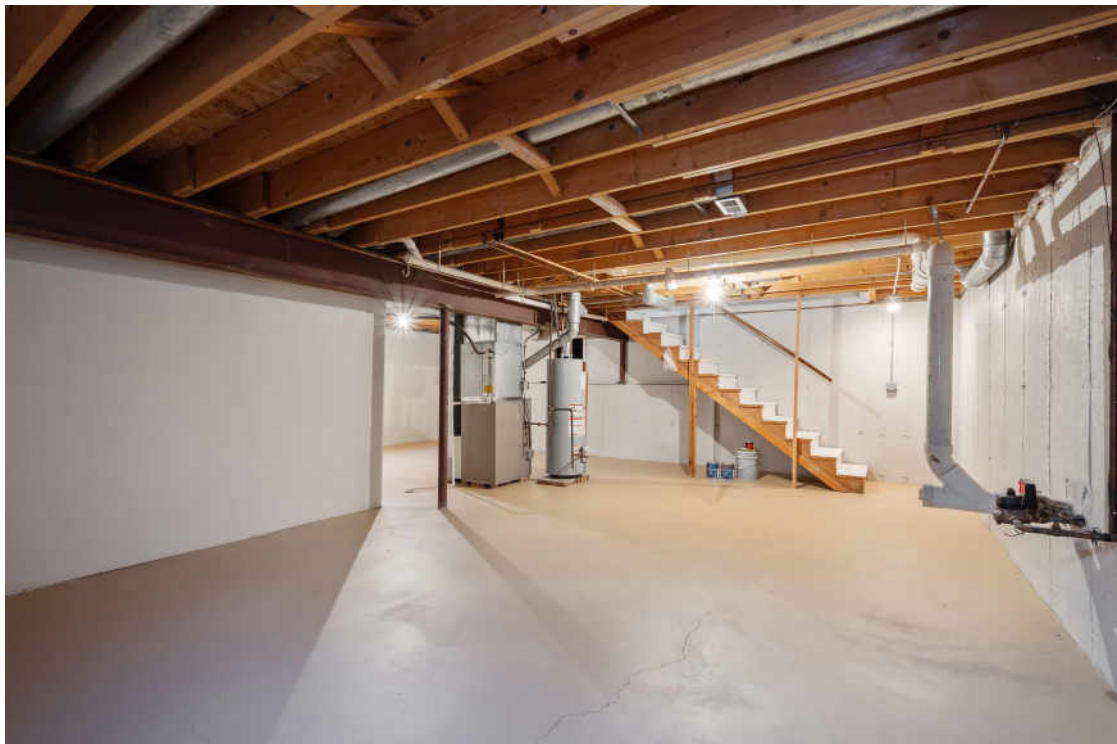
Premier location with excellent Crystal Lake Schools. Not to be missed - time to come HOME!















NAMED FOR ITS LAKE'S CRYSTAL CLEAR WATER, THE LAKE REMAINS A SHINING CENTERPIECE OF **CRYSTAL LAKE**.

The Crystal Lake Park District has more than 40 parks spanning 2,000 acres including Veterans Acres' with 140 acres and a nature center along Walkup Road and Main Beach along Crystal Lake.

Lippold Park has dozens of athletic fields, a disc golf course, dog park and a family golf center with 60 driving range tee stations and a 10,000-square-foot putting green along with two lighted mini golf courses. The park has ponds, wetlands and 4.5 miles of walking and biking trails.

The city's historic downtown district has been revitalized becoming a popular shopping district, home to several small specialty shops and independent businesses as well as the Raue Center for the Arts.

The Crystal Lake Metra station provides convenient transportation to Chicago on the Metra Union Pacific Northwest Line. Located 50 miles northwest of Chicago, the city also is located near several highways.

Crystal Lake has numerous suburban subdivisions with large single-family homes on sprawling lots, some with ponds or backing up to a forest and paved walking path. Several homes are built around the lake, varying in size and age.

As the largest city in McHenry County, Crystal Lake has three high schools. Crystal Lake Community Consolidated School District 47 operates middle schools and elementary schools. Prairie Grove Consolidated School District #46 also serves a portion of northeast Crystal Lake.





## CRYSTAL DIDOMENICO

(847) 207-4618

CRYSTAL@MORRISONHOMETEAM.COM

WWW.MORRISONHOMETEAM.COM

@MORRISON\_HOME\_TEAM



## JOHN MORRISON

(847) 409-0297

JOHN@MORRISONHOMETEAM.COM

WWW.MORRISONHOMETEAM.COM

@MORRISON\_HOME\_TEAM



**@properties®**

**342EVERETTAVE.INFO**