

346 SUMAC ROAD
HIGHLAND PARK



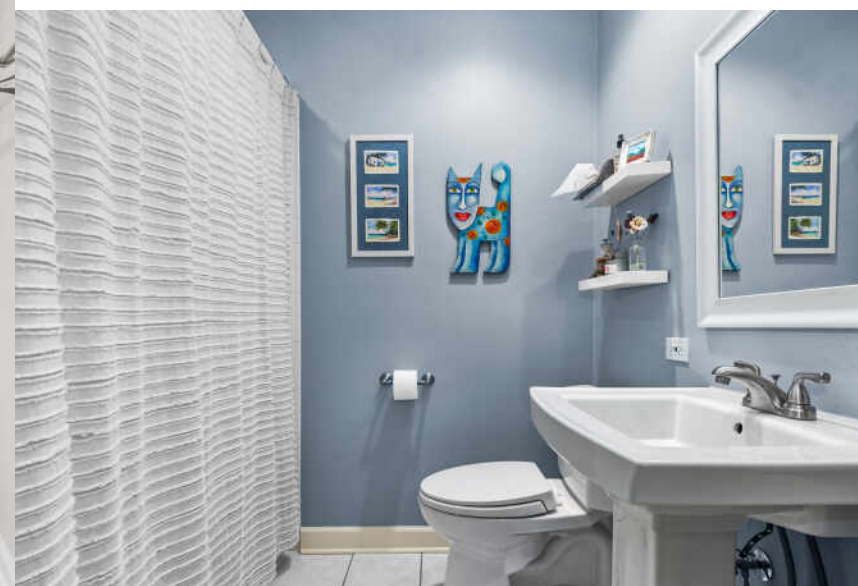


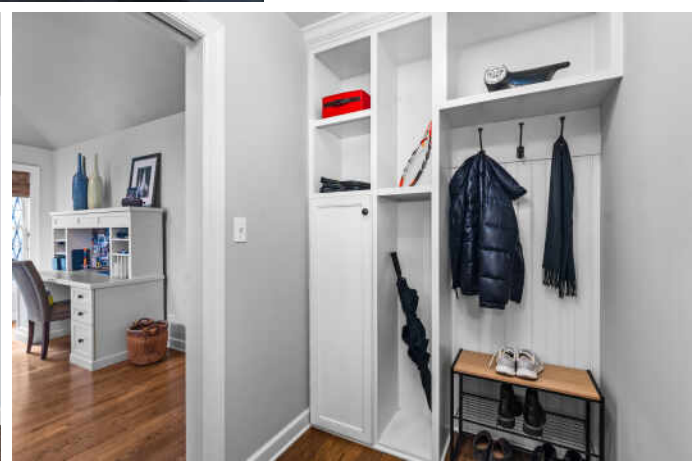
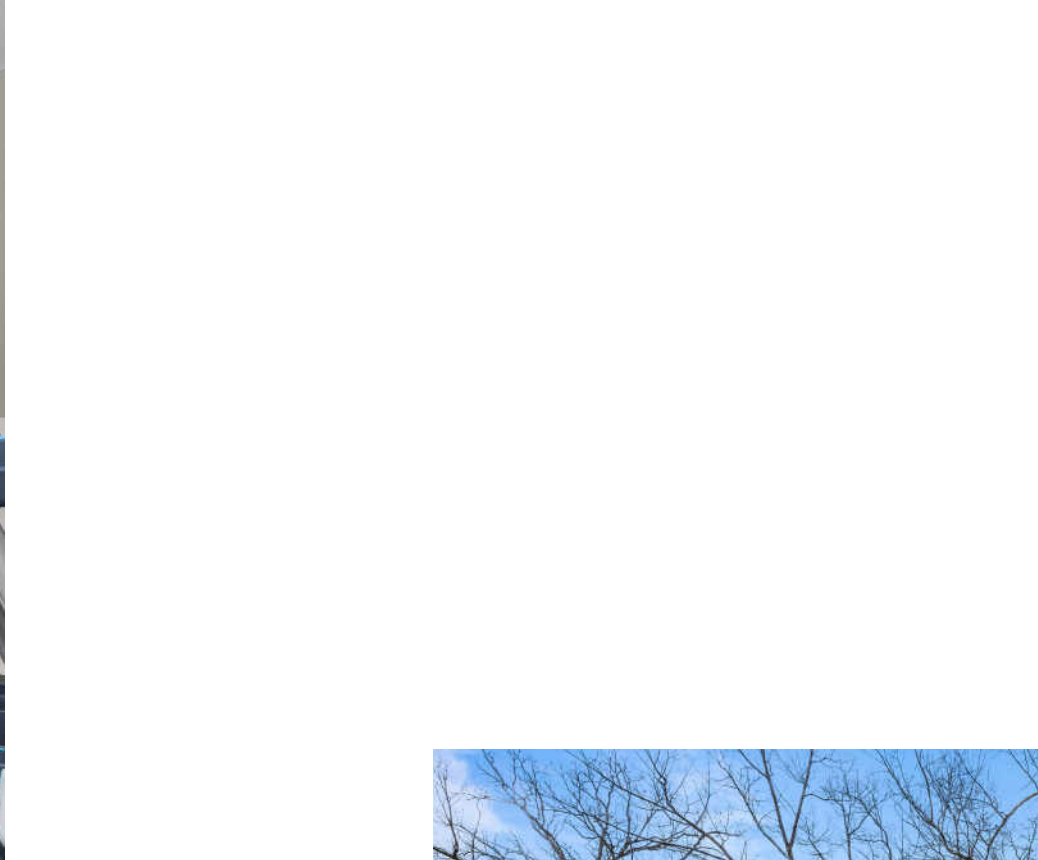
4 BEDROOM
4 BATH
TAXES: \$17,156

- Move Right in to this beautiful updated 4 bedroom, 4 Bath, plus bonus room and screened in porch home on over .25 acre lot in wonderful neighborhood.
- This home was totally transformed in 2006 with a well thought out addition and updates.
- Large Family room, with volume tray ceiling with skylights and Living room both hosting handsome fireplaces with dinning room perfectly placed between the two rooms.
- Amazing screened in porch off the Family room with gorgeous millwork ceiling over looking ideally sized back yard with patio.
- Fabulous cabinet space in Chef's kitchen with newer stainless steel appliances.
- Spacious primary suite designed for comfort and luxury.
- Primary suite includes a large walk in closet perfect for organizing.
- The ensuite bathroom features double sink with the centerpiece being a luxurious steam shower, ideal for relaxing after a long day!
- 3 generous sized bedrooms and 2 more full baths.
- The best is the enormous bonus room ideal for exercise, recreation, billiard/ping pong or office.
- Lower lever also gives versatility to be recreation room or office plus full bath down there as well.
- Must have mudroom off roomy 2 car garage.





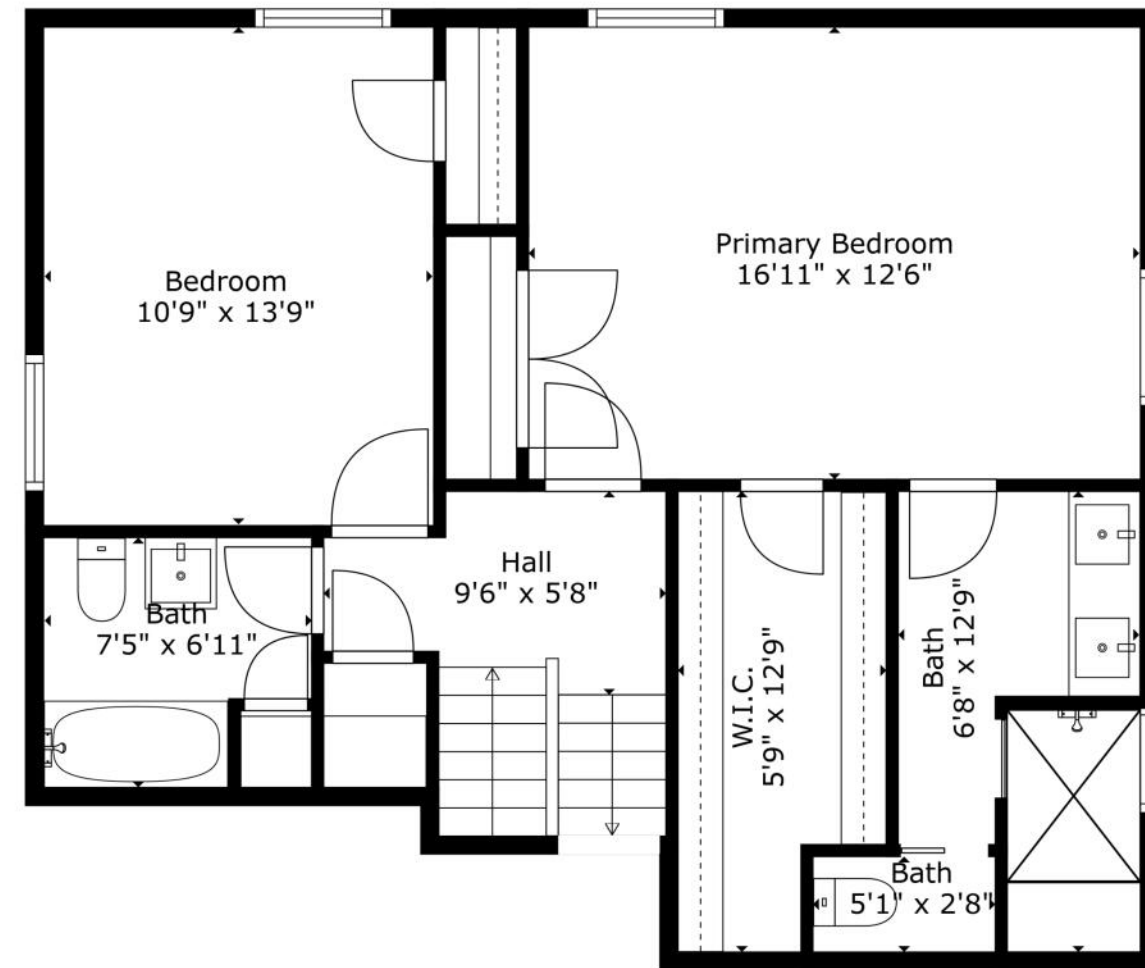






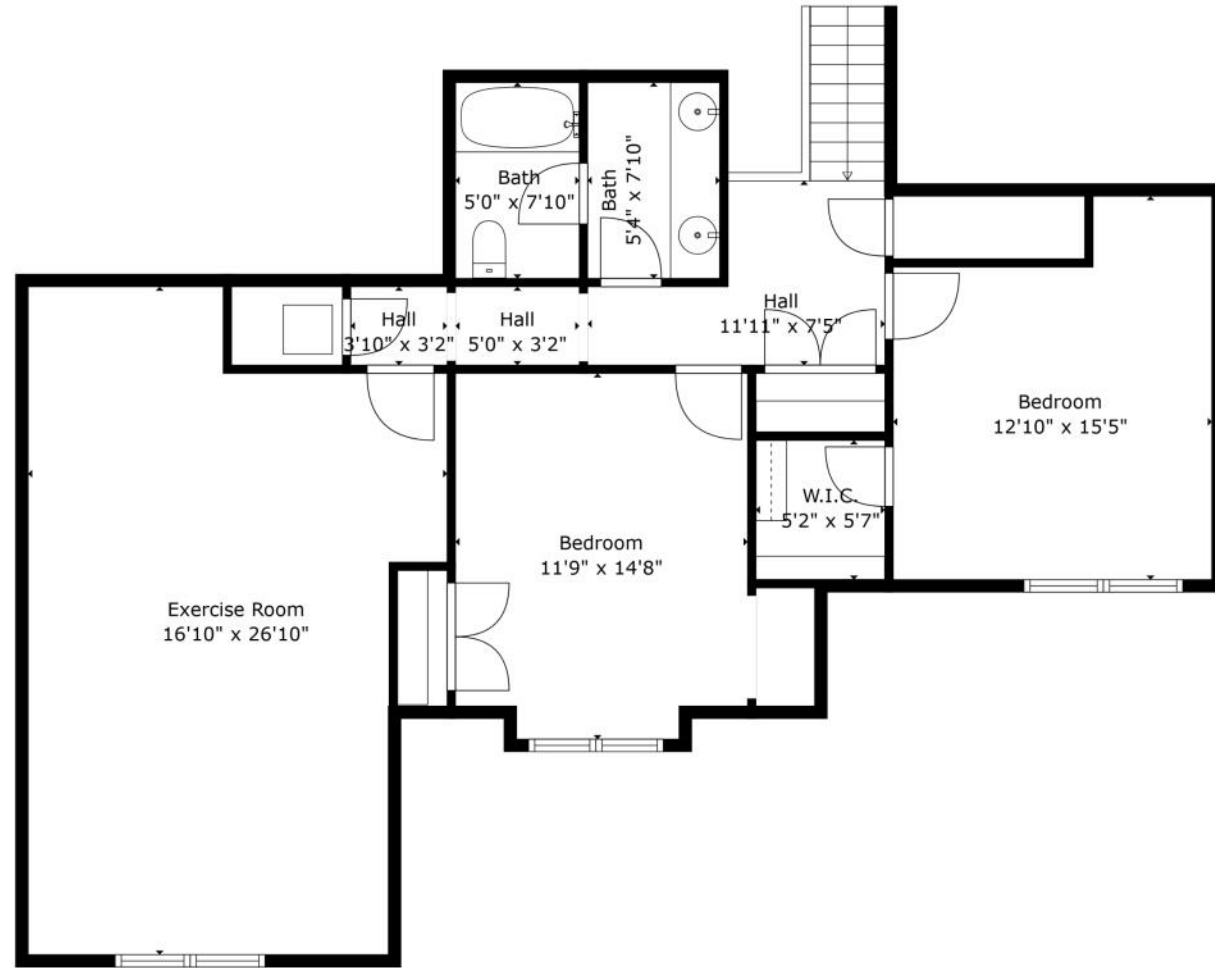
TOTAL: 3224 sq. ft
 BELOW GROUND: 413 sq. ft, FLOOR 2: 1178 sq. ft, FLOOR 3: 706 sq. ft, FLOOR 4: 927 sq. ft
 EXCLUDED AREAS: UTILITY: 211 sq. ft, LAUNDRY: 88 sq. ft, GARAGE: 449 sq. ft,
 SCREENED PORCH: 142 sq. ft, FIREPLACE: 12 sq. ft, UNDEFINED: 14 sq. ft,
 LOW CEILING: 97 sq. ft

Floor Plan Created By Cubicasa App. Measurements Deemed Highly Reliable But Not Guaranteed.



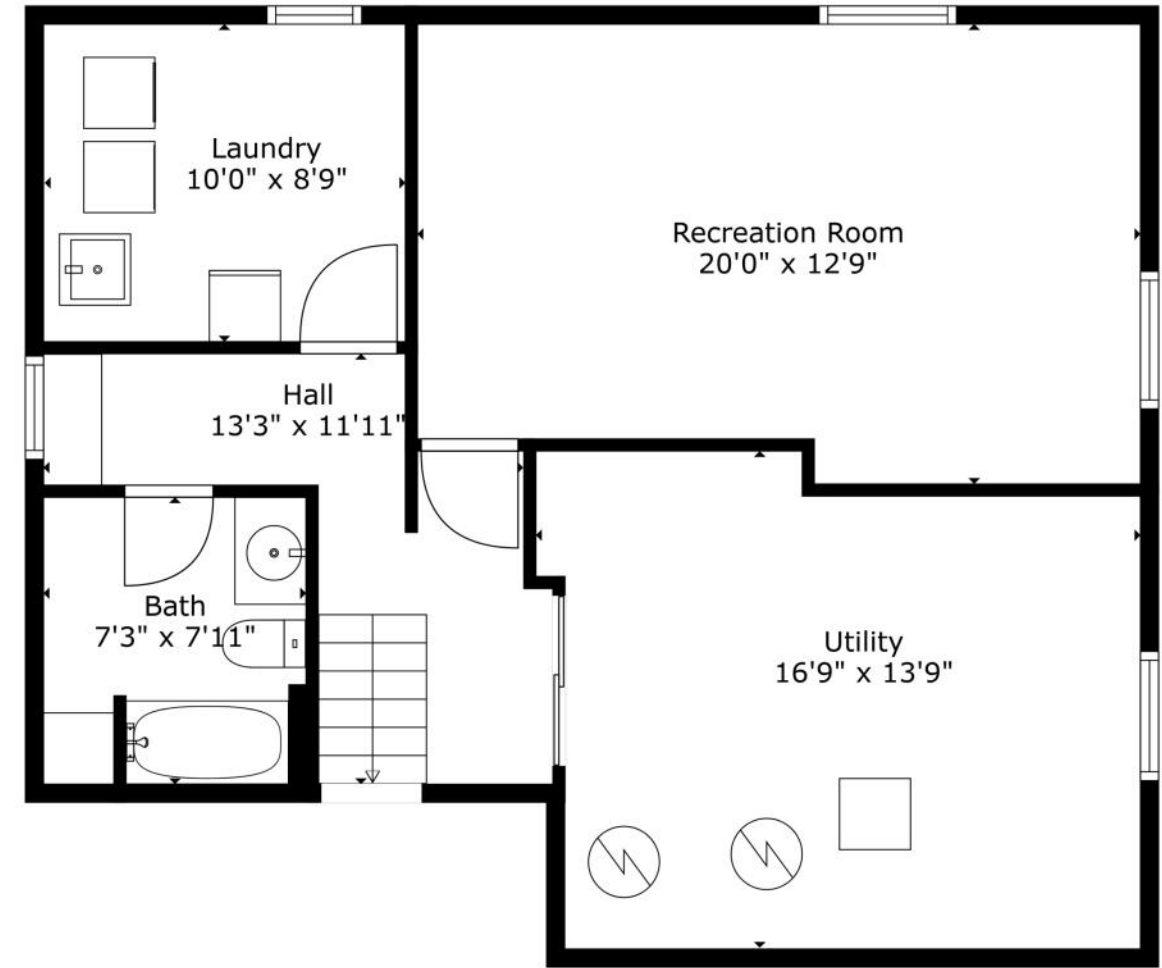
TOTAL: 3224 sq. ft
 BELOW GROUND: 413 sq. ft, FLOOR 2: 1178 sq. ft, FLOOR 3: 706 sq. ft, FLOOR 4: 927 sq. ft
 EXCLUDED AREAS: UTILITY: 211 sq. ft, LAUNDRY: 88 sq. ft, GARAGE: 449 sq. ft,
 SCREENED PORCH: 142 sq. ft, FIREPLACE: 12 sq. ft, UNDEFINED: 14 sq. ft,
 LOW CEILING: 97 sq. ft

Floor Plan Created By Cubicasa App. Measurements Deemed Highly Reliable But Not Guaranteed.



TOTAL: 3224 sq. ft
 BELOW GROUND: 413 sq. ft, FLOOR 2: 1178 sq. ft, FLOOR 3: 706 sq. ft, FLOOR 4: 927 sq. ft
 EXCLUDED AREAS: UTILITY: 211 sq. ft, LAUNDRY: 88 sq. ft, GARAGE: 449 sq. ft,
 SCREENED PORCH: 142 sq. ft, FIREPLACE: 12 sq. ft, UNDEFINED: 14 sq. ft,
 LOW CEILING: 97 sq. ft

Floor Plan Created By Cubicasa App. Measurements Deemed Highly Reliable But Not Guaranteed.



TOTAL: 3224 sq. ft
 BELOW GROUND: 413 sq. ft, FLOOR 2: 1178 sq. ft, FLOOR 3: 706 sq. ft, FLOOR 4: 927 sq. ft
 EXCLUDED AREAS: UTILITY: 211 sq. ft, LAUNDRY: 88 sq. ft, GARAGE: 449 sq. ft,
 SCREENED PORCH: 142 sq. ft, FIREPLACE: 12 sq. ft, UNDEFINED: 14 sq. ft,
 LOW CEILING: 97 sq. ft

Floor Plan Created By Cubicasa App. Measurements Deemed Highly Reliable But Not Guaranteed.



TED PICKUS

8474170520

847-432-0700

TEDPICKUS@ATPROPERTIES.COM



LISA SCHULKIN

8476021112

847-432-0700

LSCHULKIN@ATPROPERTIES.COM

TED PICKUS
TEAM



CHRISTIE'S
INTERNATIONAL REAL ESTATE