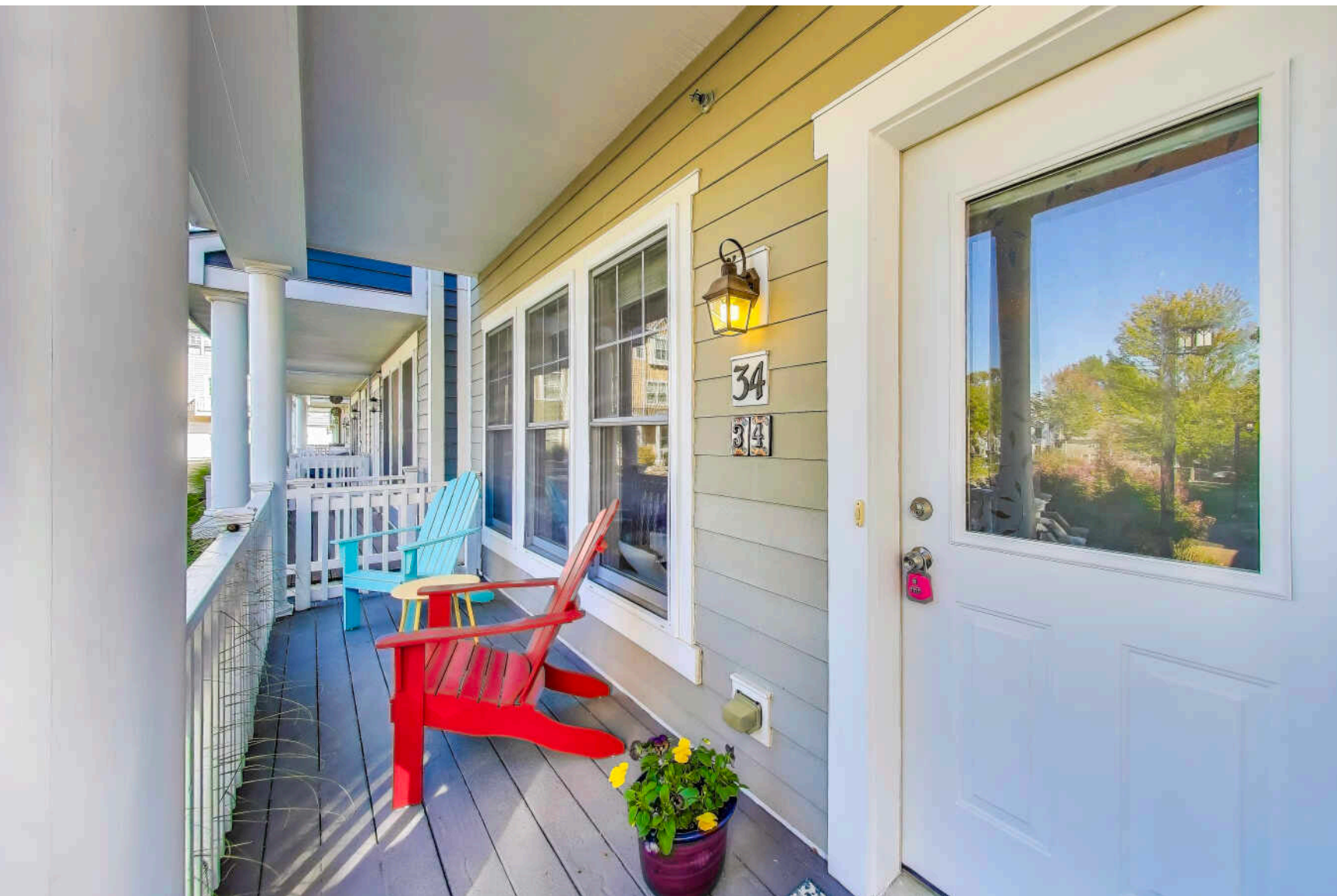


# 34 LAKEVIEW PLACE

LAKE ZURICH

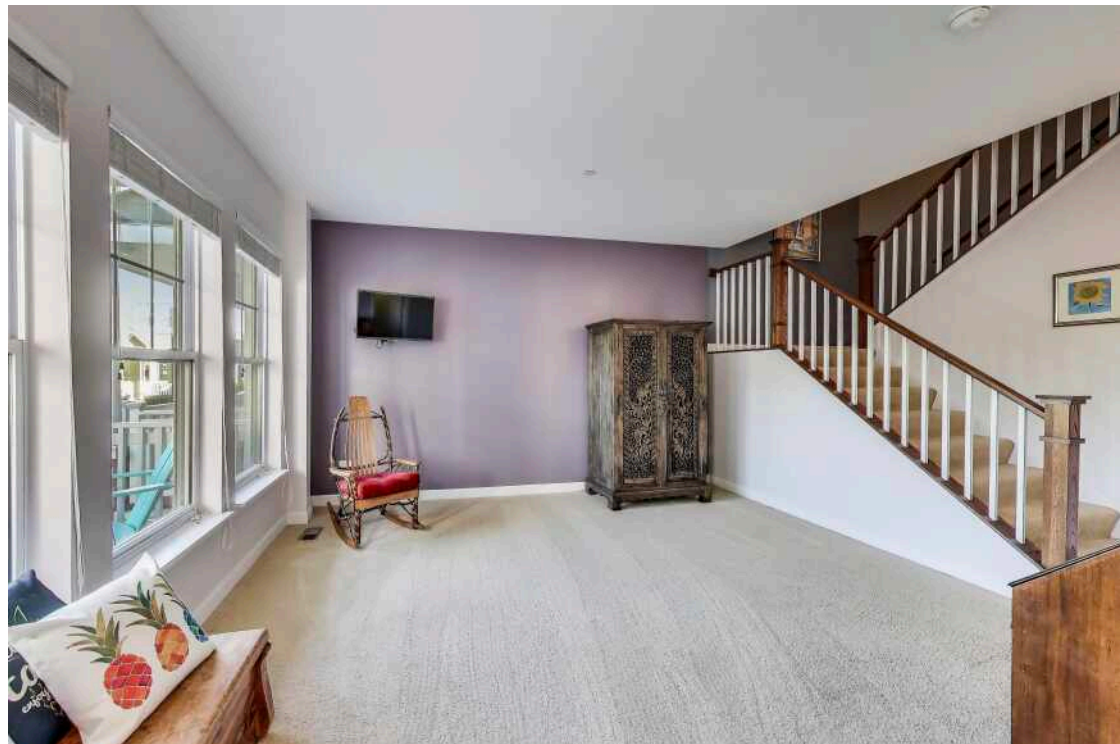




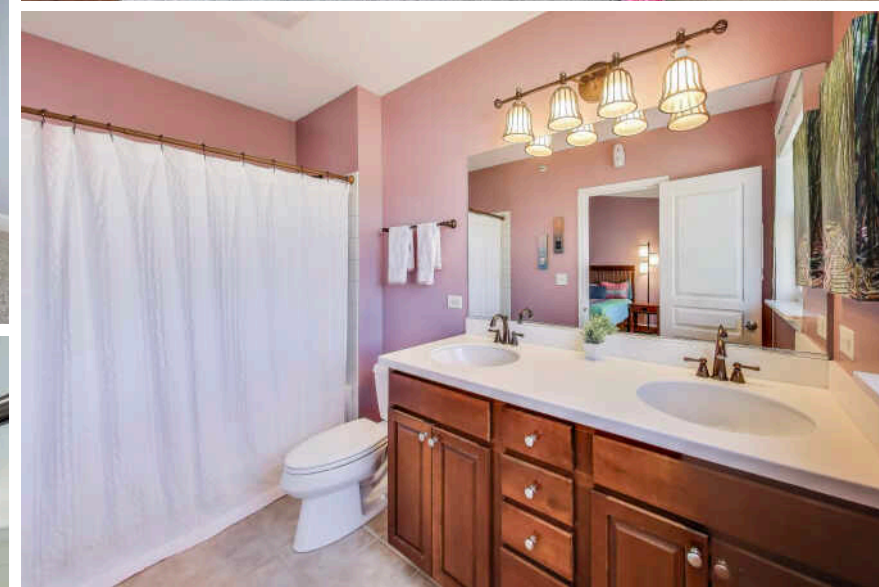
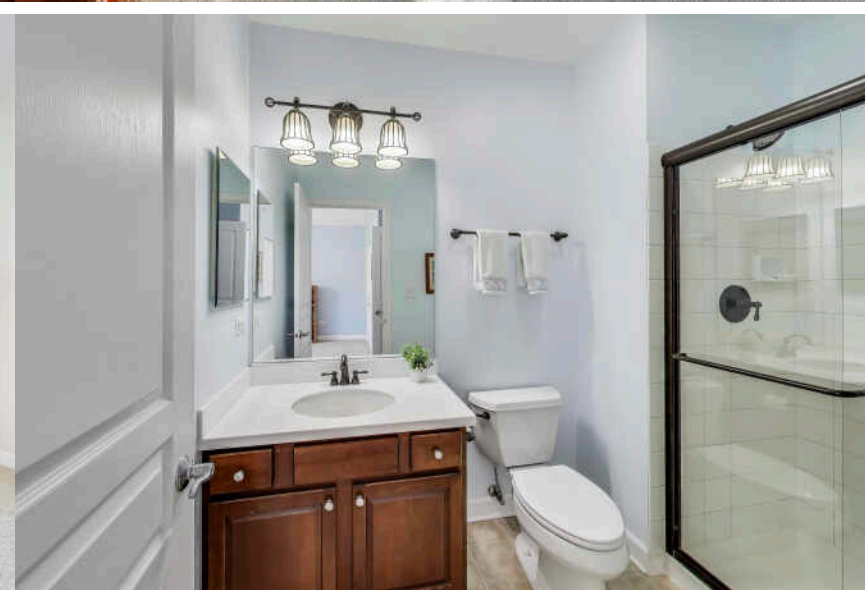
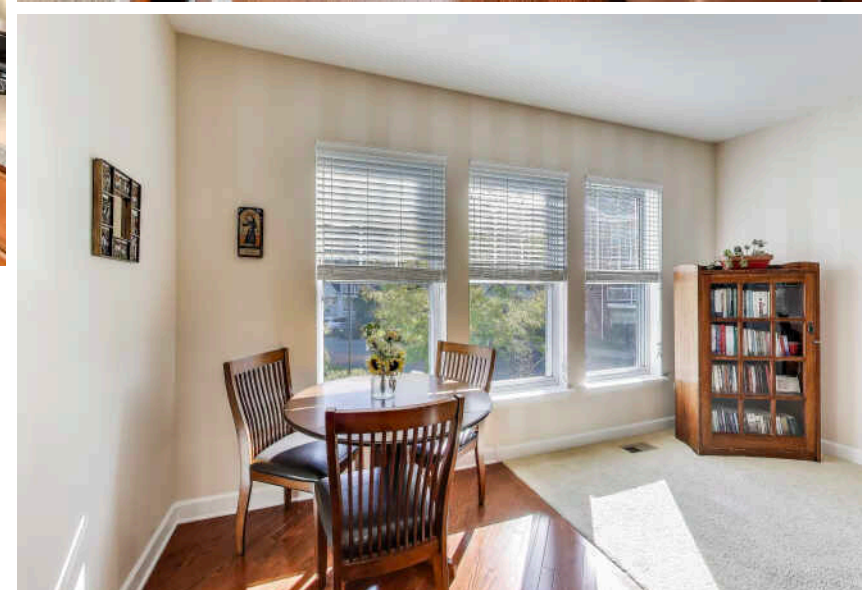
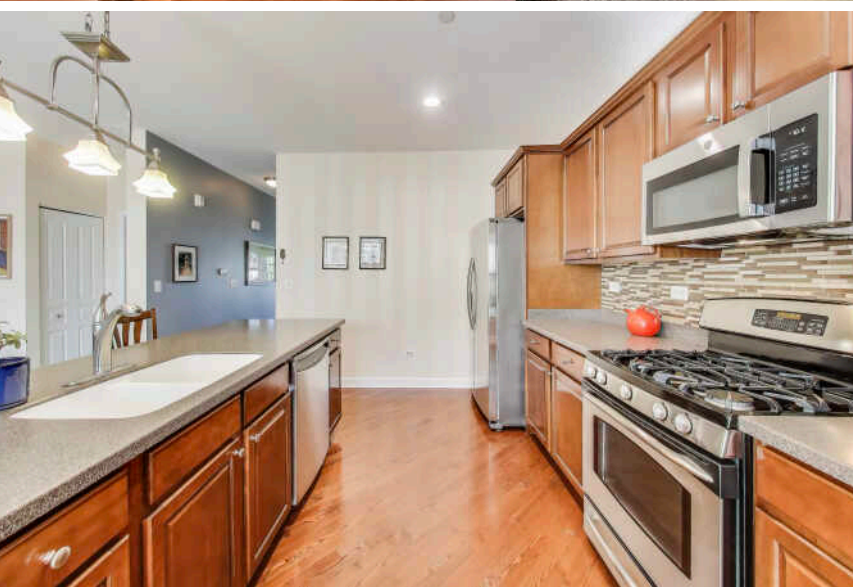
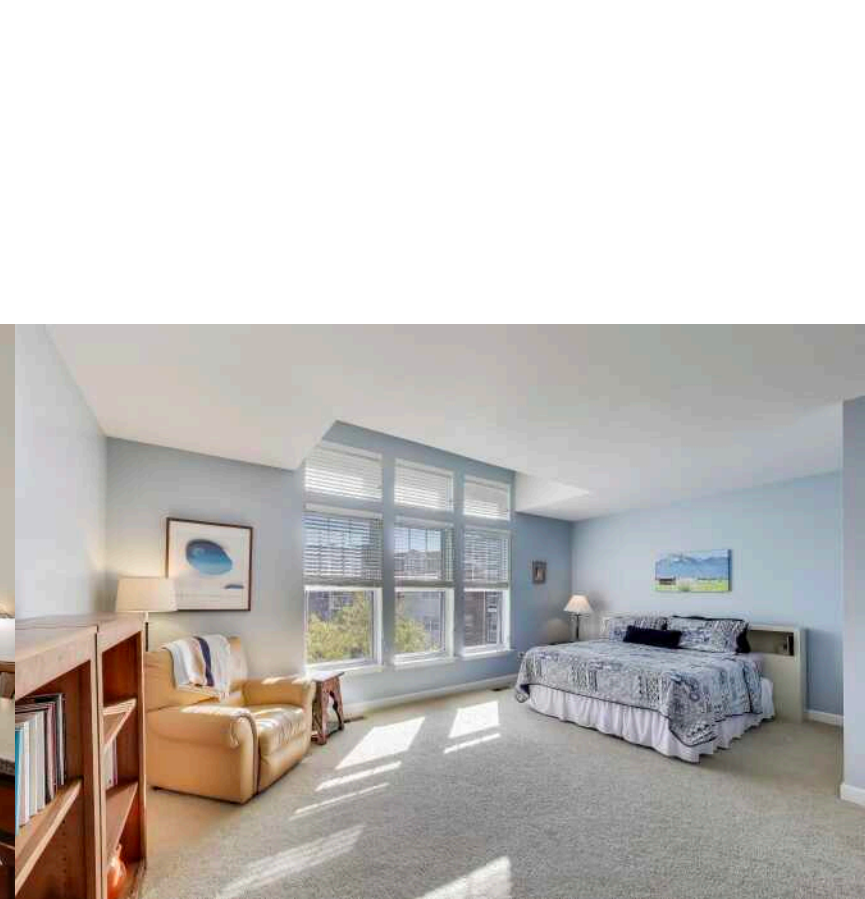
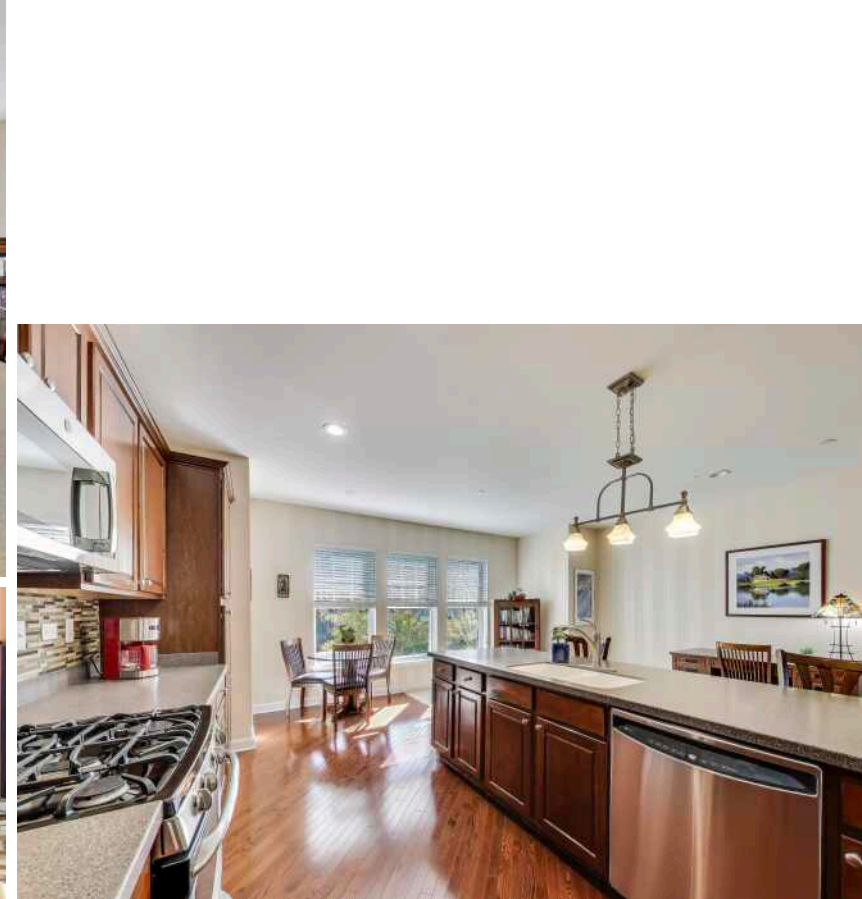
2 BEDROOM  
2.1 BATH  
TAXES: \$8,307  
ASSESSMENTS: \$318 / MONTH

Rarely available townhome in the highly sought-after Somerset community! Boasting over 2,000 sq. ft. across three beautifully finished levels, this home blends space, style, and convenience. The open layout includes two spacious bedrooms- each with its own private en suite-providing both comfort and privacy. Two decks and a front porch invite you to unwind with tranquil lake views, park-like surroundings, and unforgettable sunsets. The prime location is just steps from Lake Zurich's downtown, where you'll find shopping, dining, coffee shops, and all the charm of a vibrant lakeside community-without the hustle and bustle. Enjoy being a short stroll from Lake Zurich itself, the new Sunset Pavilion, Breezewald Park, and scenic walking paths, practically at your doorstep. A roomy 2-car garage and low-maintenance living complete the package. This is your chance to experience resort-style living in the heart of Lake Zurich!

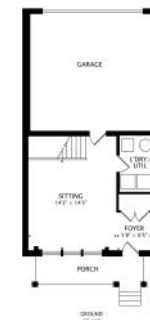
















## AMBER CAWLEY

(847) 293-4782

AMBERCAWLEY@ATPROPERTIES.COM

HOMESBYCAWLEY.COM



CHRISTIE'S  
INTERNATIONAL REAL ESTATE