

350 SIGNE COURT

LAKE BLUFF





ROOM DIMENSIONS

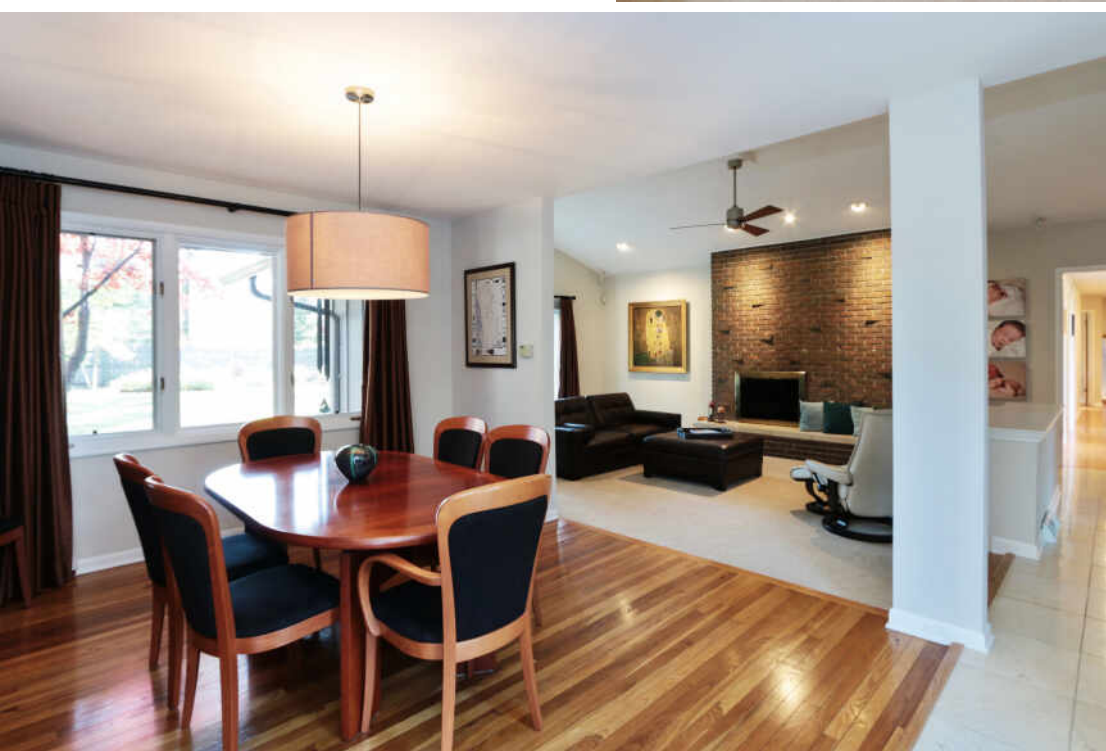
- KITCHEN : 18' × 12'
- FAMILY ROOM : 18' × 13'
- LIVING ROOM : 20' × 16'
- DINING ROOM : 16' × 12'
- PRIMARY BEDROOM : 20' × 12'
- 2ND BEDROOM : 12' × 12'
- 3RD BEDROOM : 12' × 11'
- 4TH BEDROOM : 12' × 11'
- REC ROOM : 31' × 15'
- LAUNDRY ROOM : 8' × 8'
- MUD ROOM : 6' × 5'

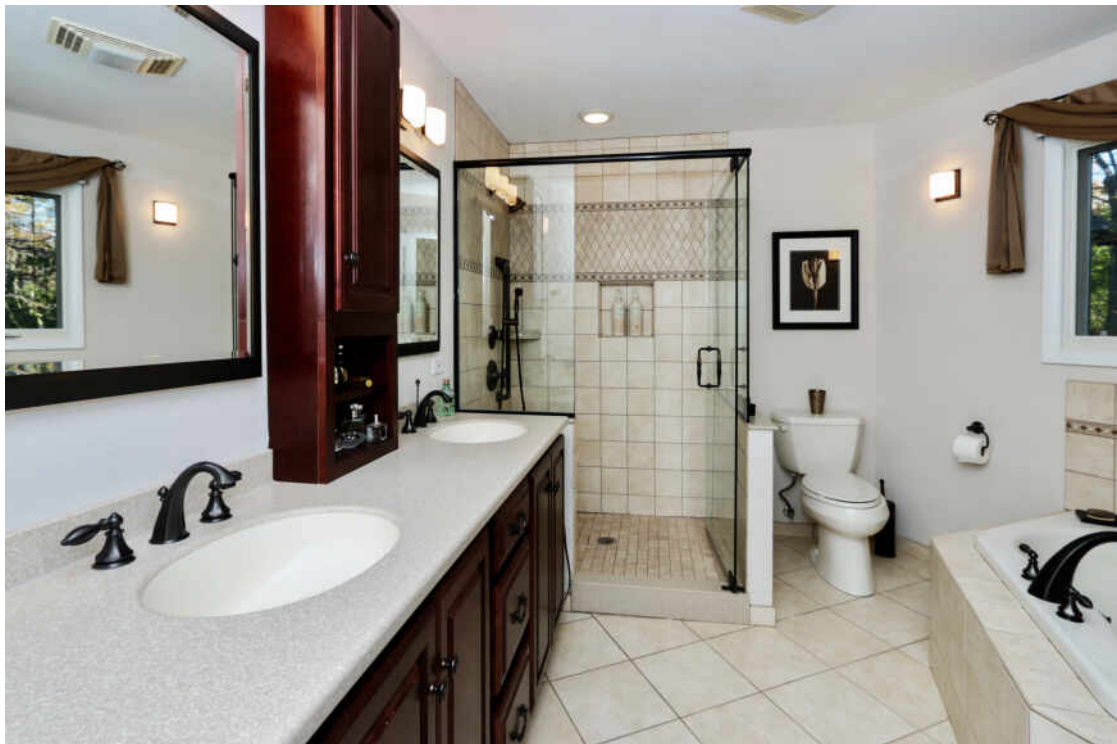
4 BEDROOM
2.1 BATH
TAXES: \$13,065.34

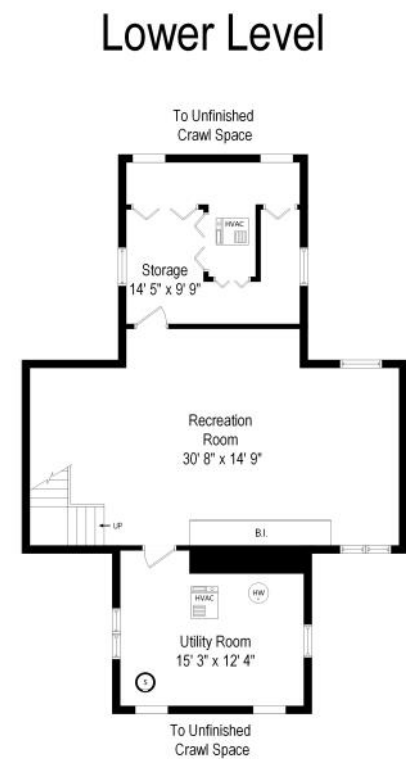
YOUR OASIS AWAITS!

Live, work and play in this sunny, California-style ranch on a lush, one-acre, private lot. Plenty of space to work from home, spend family time, and entertain. You'll love the open floor plan, vaulted ceilings, two fireplaces and the many large windows which offer views of the yard and gardens from every room. The outstanding cook's kitchen opens to the family room and is perfect for family dinners or gathering with friends. It features an enormous island, Viking appliances, quartz counter tops, Thermador dishwasher, walk-in pantry, and a full-height Gaggenau dual-zone wine refrigerator. Open the family room double doors and move out to the expansive Trex deck and enjoy the outdoors. The spacious master and luxury bath provide the perfect getaway - large doors open to a private deck. The finished basement is ideal for a home office as is the 4th bedroom. Fresh paint throughout. Carpeting, windows, curtains and the rest all professionally cleaned. House exterior, deck and stone walkways power washed. Driveway sealed, trees trimmed, and topnotch landscaping. All you have to do it move in!.











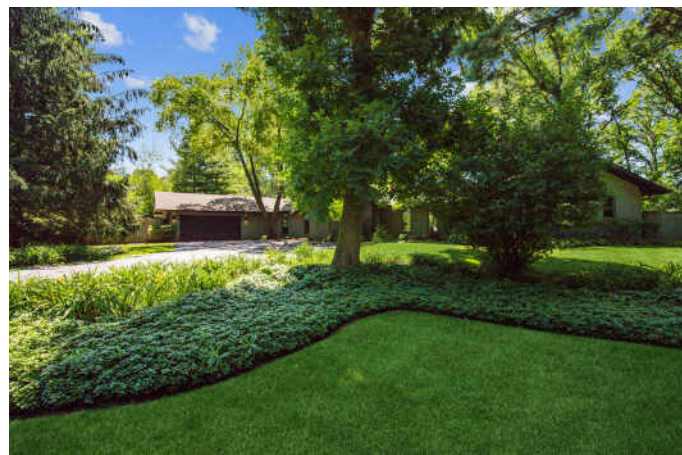
LAKE BLUFF IS A RARE GEM.

Set atop the string of North Shore communities, the village boasts a welcoming laid-back lifestyle, historic architecture, a thriving downtown, and a priceless sense of community.

Each year, Lake Bluff hosts a number of special events - from art festivals and farmers markets to community barbeques, block parties, and a Fourth of July Parade. Its annual Halloween event brings out hundreds of ghouls and goblins, while the Bluffinia concert series brings residents together on the Village Green for a wide array of live music. Residents also enjoy scenic parks, recreational activities, an assortment of small boutiques and restaurants, and a beautiful lakefront with limited development.

A variety of architectural styles keep Lake Bluff interesting with Tudor, Colonial, Victorian, bungalow, and modern homes. Properties range from multi-million-dollar lakefront estates to condominiums and townhomes.

Residents find easy access to major interstates and U.S. Route 41, along with a Metra station that serves commuters headed to Chicago.



NOTES

[illegible]



MARTHA PEDERSEN

(847) 687-2946

MARTHAP@ATPROPERTIES.COM

WHO DO YOU KNOW RIGHT NOW IN NEED OF
THE EXPERT REAL ESTATE SERVICES I PROVIDE?

Martha
PEDERSEN



CHRISTIE'S
INTERNATIONAL REAL ESTATE

350SIGNE.INFO