

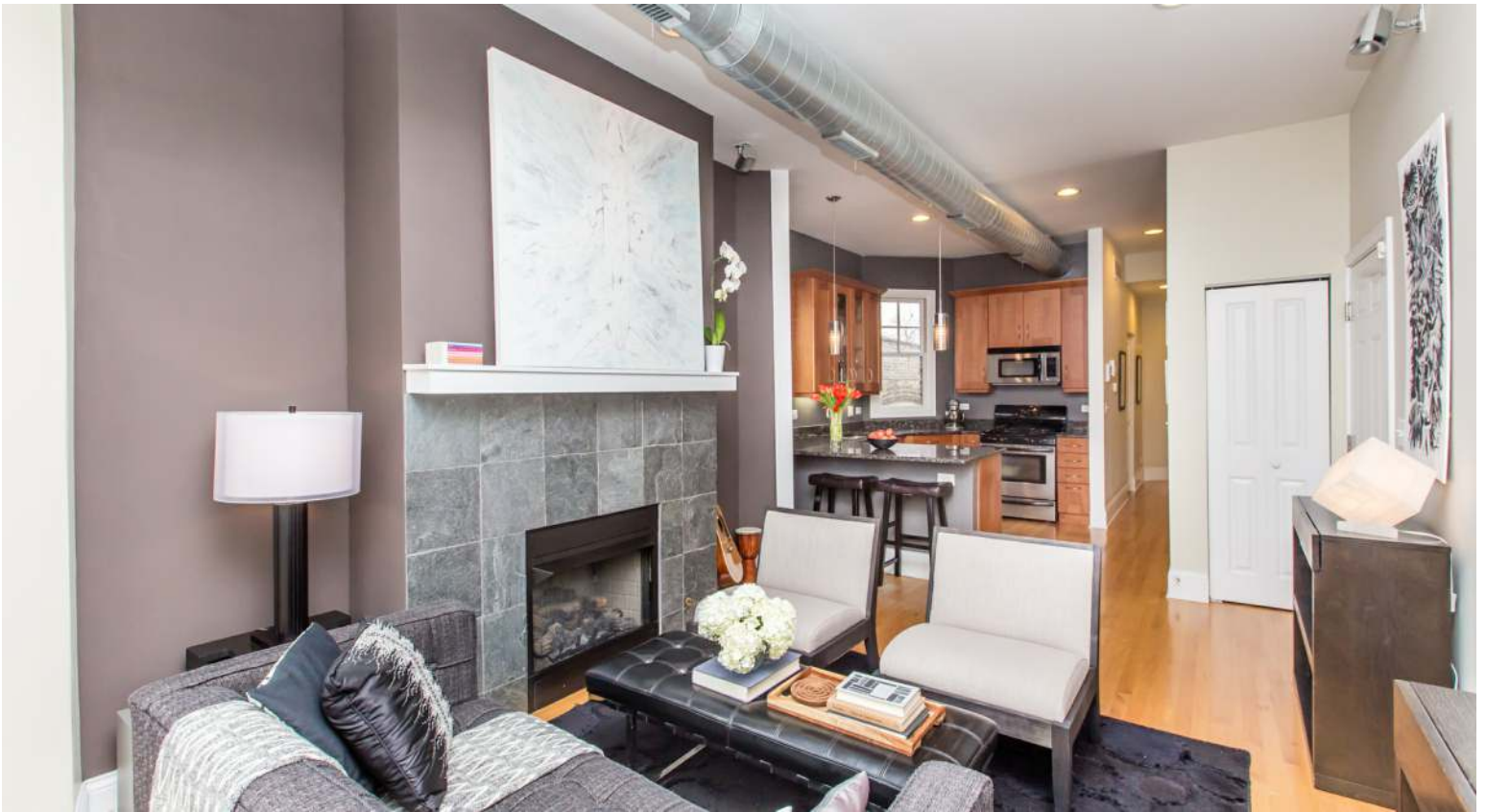


3530 N RETA AVENUE 3F

Lake view







- Perfect Wrigleyville location!
- Top floor, turnkey 2 bedroom and 2 full bath plus den/office
- All brick building in highly desirable Nettelhorst School District.
- Wonderful natural light, east facing property is located on a quiet, tree-lined and one-way street.
- Ample kitchen with granite countertops and stainless appliances (dishwasher and stove new 2017).
- Hardwood floors throughout.
- Master suite features organized closets and whirlpool tub.
- Both baths feature marble, guest bath has steam shower.
- Central air. Gas fireplace located in living room. In-unit washer/dryer (new 2017).
- Steps to Wrigley Field, Red Line (Addison stop), Whole Foods, shops, restaurants on Halsted and Broadway, lake, park.
- Reta is one of the prettiest streets in the neighborhood. Welcome home!

TAXES: \$4,526 | ASSESSMENTS: \$192

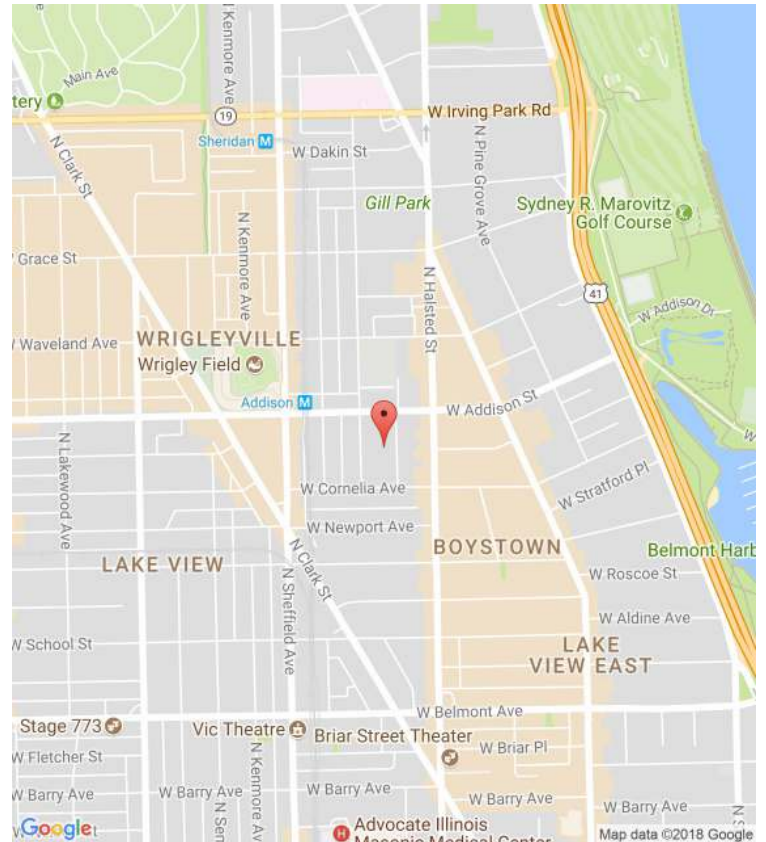















Stop looking, start finding® [atproperties.com](https://atproperties.com)  



Liz Lassner  
(773) 343-1403  
[llassner@atproperties.com](mailto:llassner@atproperties.com)

# LIZ LASSNER

PEOPLE BEFORE PROPERTY

All specifications, features, designs, price, assessments, taxes and materials are subject to change without notice. Depicted floor plans and architectural renderings are only an artist's impression.