

3535 PATTEN ROAD #1F
HIGHLAND PARK



@properties®

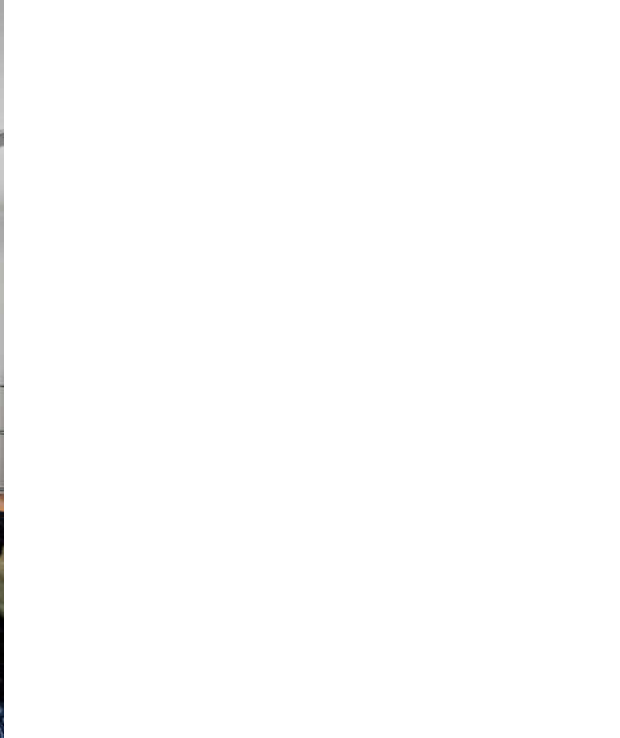
CHRISTIE'S
INTERNATIONAL REAL ESTATE

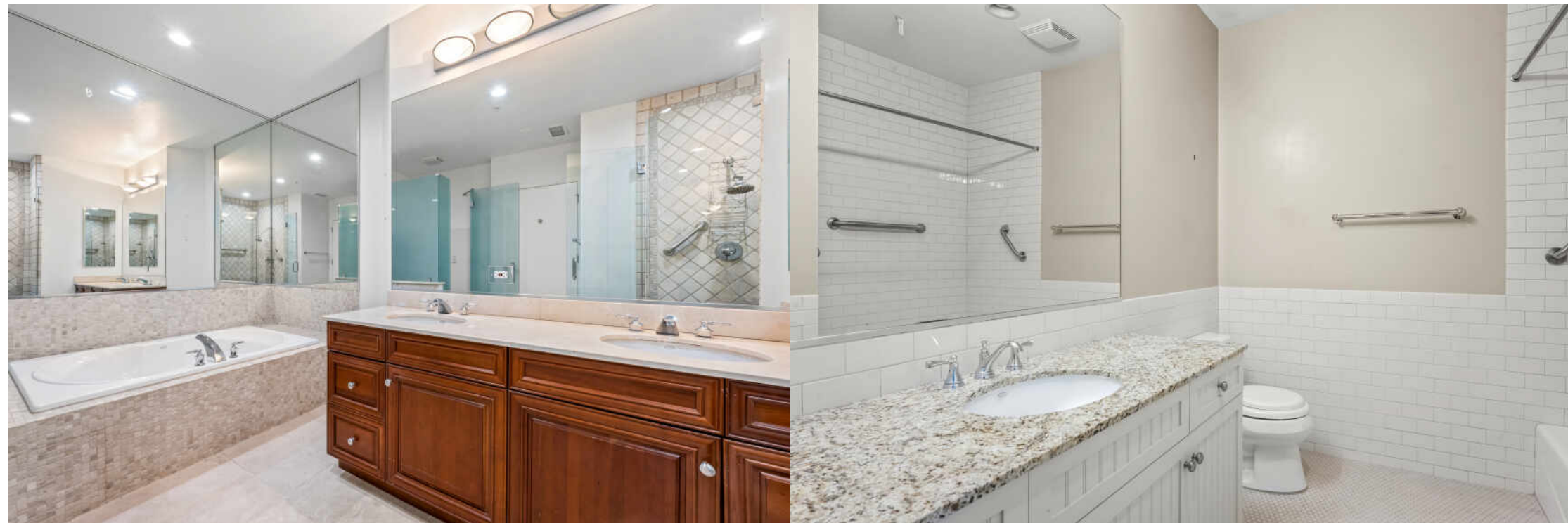


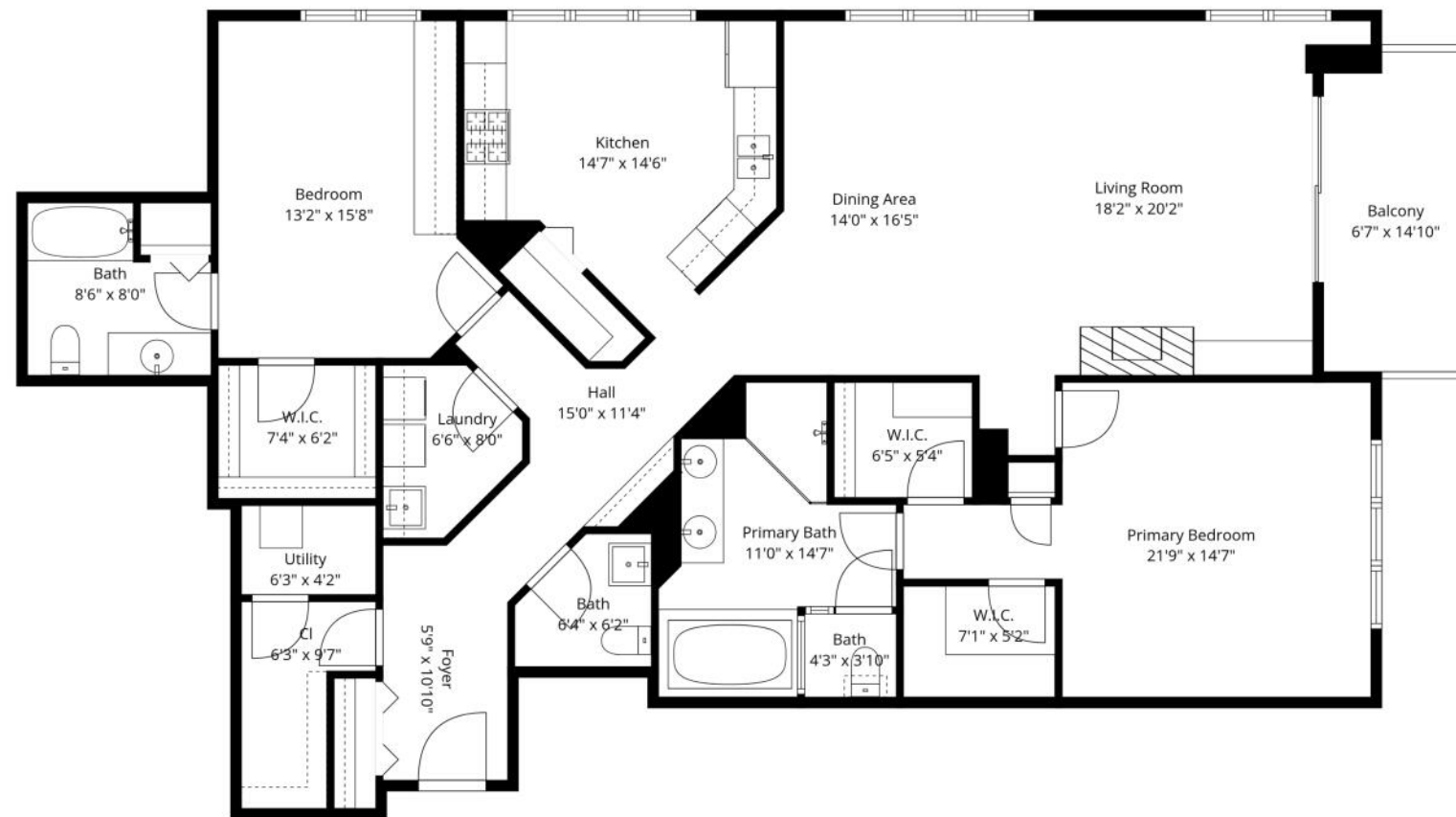
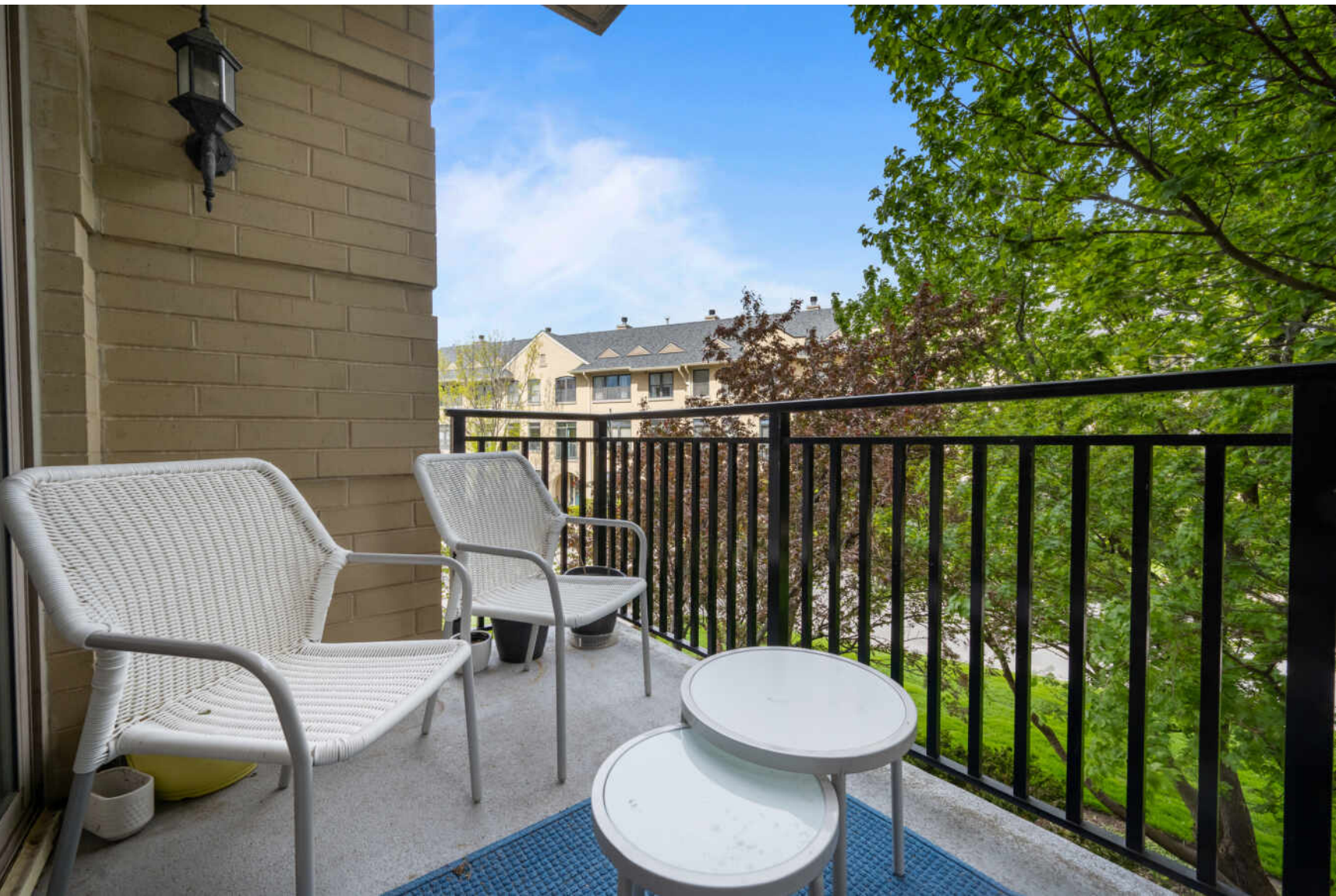
2 BEDROOM
2.1 BATH
TAXES: \$14,000
ASSESSMENTS: \$724 / MONTH

- This expansive luxury condo features soaring 9-foot ceilings, stunning hardwood floors, and elegant recessed lighting, creating a warm and inviting atmosphere.
- The gourmet kitchen is a chef's delight, equipped with high-end stainless-steel appliances, a spacious pantry, and ample room for a cozy breakfast nook, perfect for casual dining.
- Off the kitchen is an expansive great room with lots of space for a dining table and entertainment area.
- The balcony is off the great room which is the perfect place to enjoy the peaceful setting of the Fort.
- Retreat to the generous master suite, which includes two large walk-in closets and a luxurious en-suite bathroom featuring a double vanity, a separate shower, and a relaxing Jacuzzi tub.
- The second bedroom also boasts an en-suite bathroom and a spacious walk-in closet, offering privacy and comfort for guests.
- Enjoy the convenience of an in-unit laundry room and in-unit storage room, ensuring you have everything you need at your fingertips.
- The property includes two heated tandem garage spaces for your vehicles.
- Residents can take advantage of the well-equipped hospitality room and fitness facilities, perfect for social gatherings and staying active.
- Steps outside to find a stunning swimming pool, ideal for summer relaxation and enjoyment, complemented by a sun deck for soaking up the sun.
- The adjacent parade grounds provide ample open space for recreational activities, making it a great place for outdoor enthusiasts.
- With easy access to Lake Michigan and the Open Lands Preservation area, this condo offers the perfect blend of tranquility and convenience.









TOTAL: 1745 sq. ft
 1st floor: 1745 sq. ft
 EXCLUDED AREAS: BALCONY: 95 sq. ft, WALLS: 105 sq. ft

Floor Plan Created By Cubicasa App. Measurements Deemed Highly Reliable But Not Guaranteed.



TED PICKUS

1 8474170520

847-432-0700

TEDPICKUS@ATPROPERTIES.COM



LISA SCHULKIN

1 8476021112

847-432-0700

LSCHULKIN@ATPROPERTIES.COM

TED PICKUS

TEAM
