

356 W WOOD STREET #32  
PALATINE





#### ROOM DIMENSIONS

LIVING ROOM : 17' × 15'

DINING ROOM : 15' × 10'

FAMILY ROOM : 15' × 11'

KITCHEN : 17' × 14'

PRIMARY BEDROOM : 15' × 14'

SECOND BEDROOM : 12' × 11'

## LOCATION, LOCATION, LOCATION!

Looking for City Living in the Suburbs? Look No Further! Within Close Proximity to Downtown Palatine and all it has to offer: Metra, Palatine Restaurants, Jewel, Farmers Market and the Margaret Riemer Reservoir with Frisbee Golf & Trails. This Luxury Townhome consists of Three Level Living with 2 Bedrooms, 2.1 Baths, and 2 Car Garage. First Floor features Flex Space for Home Office, Play Room or Entertainment Area with Wood Floors. Upstairs the Main Level consists of Wood Floors and an Open Living/Dining Room Concept with a Gas Fireplace for Cozy Winter Gatherings. Chef's Kitchen with 42" Maple Cabinets, Granite Countertops, Stainless Steel Appliances, large Pantry, and a Door leading out to a Balcony for Summer Barbecues. On the Third Level, there are Two Bedrooms and a Laundry Area for your Convenience. The Luxurious Primary Suite has a Wall of Closets, Room-Darkening Shades and a Spa Bath with Double Bowl Sinks/Vanities and a Separate Soaking Tub and Shower. Spacious Secondary Bedroom with En-Suite plus a Walk-In Closet. Unfinished Basement for Storage or Finishing with Rough-In Plumbing. Top Rated Schools, including Plum Grove Junior High and Fremd High School.



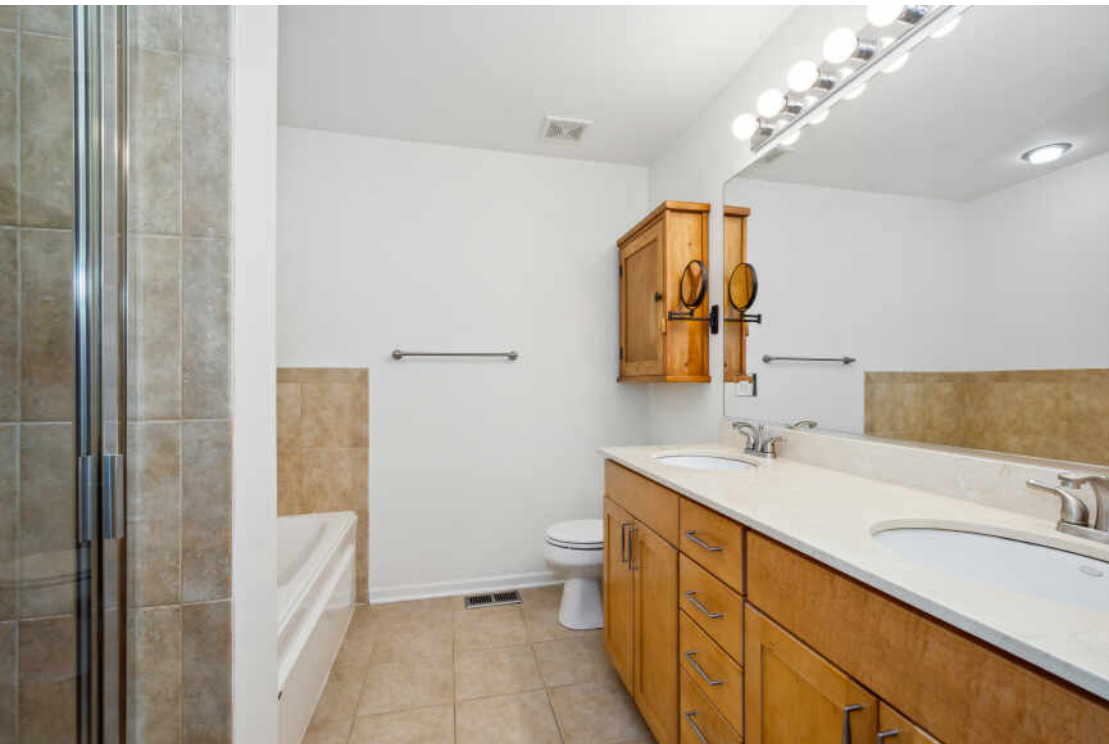
2 BEDROOM

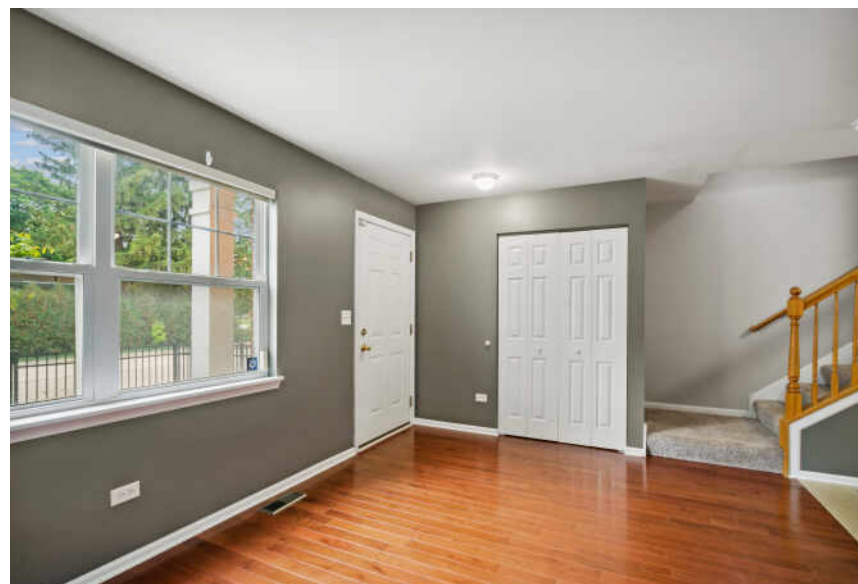
2.1 BATH

TAXES: \$9,517

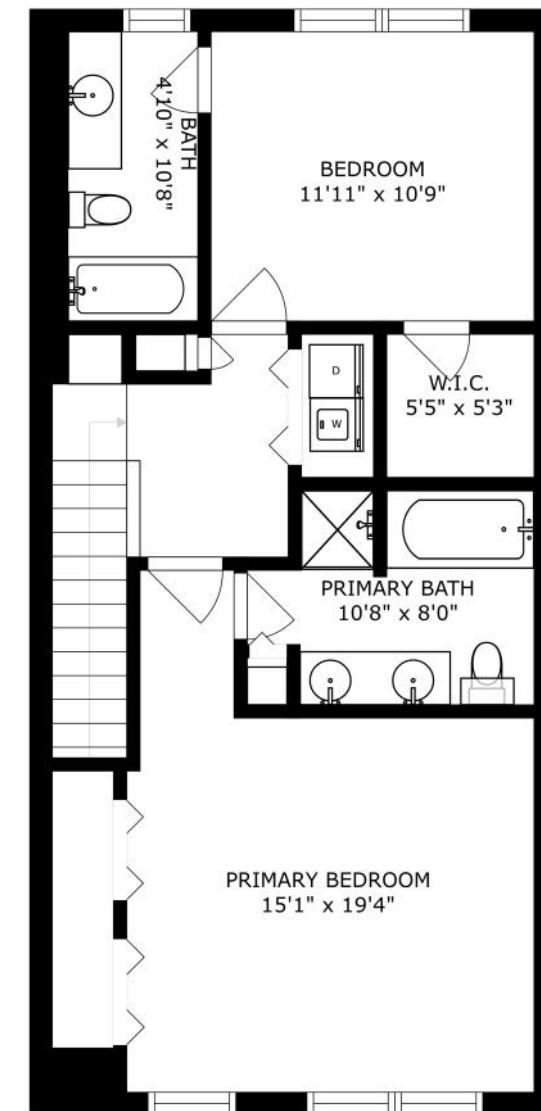
ASSESSMENTS: \$317 / MONTH







SIZES AND DIMENSIONS ARE APPROXIMATE, ACTUAL MAY VARY.



SIZES AND DIMENSIONS ARE APPROXIMATE, ACTUAL MAY VARY.





## THE VILLAGE OF **PALATINE** HAS MASTERED THE ART OF BALANCE.

The growing community has a healthy mix of residents who enjoy its friendly suburban lifestyle and businesses that fuel the local economy.

The village embraces growth to support a wealth of amenities and services. The Palatine Park District has 28 parks, an 18-hole golf course, and a variety of classes from fitness and sports to arts and crafts. Palatine offers scenic views with winding trails, beautiful residential areas, and nearby Deer Grove Forest Preserve.

Palatine's downtown business district is both charming and self-sufficient for residents. Restaurants include a mix of local favorites from classic eateries to upscale breweries, as well as a variety of local bars. The village hosts several street festivals and a popular farmers market.

Commuters have access to the Chicago Loop with the Palatine Metra station and I-90. The nearby Chicago Executive Airport offers private and corporate aircraft services.







## REGINA SCHWEINEBRATEN

(224) 500-5330

847-797-0200

REGINAS@ATPROPERTIES.COM



CHRISTIE'S  
INTERNATIONAL REAL ESTATE