

35 S WILMETTE AVENUE
WESTMONT

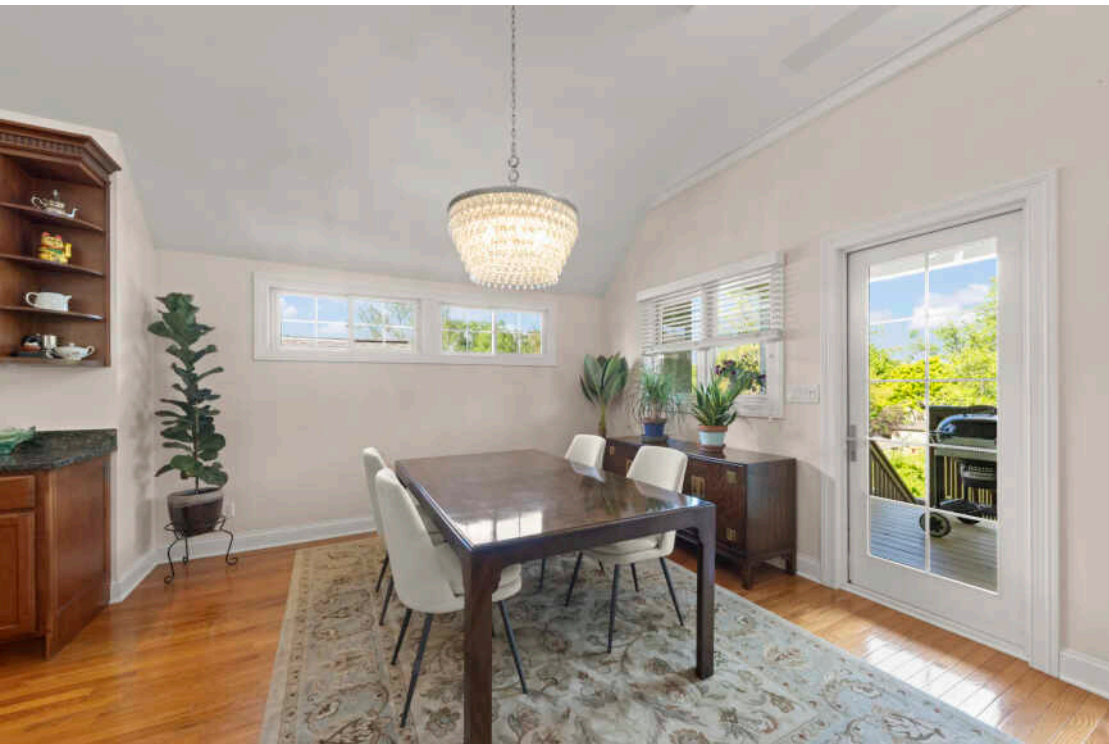




6 BEDROOM
4.1 BATH

PROPERTY DESCRIPTION AND FEATURES

Stunning custom-built home on a corner lot just steps from downtown Westmont, the Metra train, Veterans Memorial Park, and the Westmont Park District. This contemporary home offers three finished levels of beautifully designed living space. The main level impresses with a dramatic open-concept layout, soaring ceilings, and a stunning two-story stone fireplace that anchors the kitchen, living, and dining areas while creating an open, airy feel ideal for entertaining or everyday living. The main floor also features a luxurious primary suite, three additional bedrooms, a full hall bath, laundry room, and powder room. Designed with flexibility in mind, the versatile floor plan includes six bedrooms and four-and-a-half baths to easily accommodate a variety of living arrangements and space needs. The second level offers additional bedroom or office space, a full bath, and a loft overlooking the main living area. The walkout basement is equally impressive, featuring a spacious family room with wet bar and second refrigerator - perfect for entertaining or extended living. An additional bedroom and full bath provide a convenient "no-stair" living option with direct access from the garage. Additional highlights include a heated three-car garage, wraparound porch with deck, second-floor balcony, and zoned HVAC. The location is truly unbeatable - walkable to both Westmont and Clarendon Hills. Enjoy the vibrant dining scenes of both communities along with beloved local events such as Taste of Westmont, Holly Days, Dancing in the Streets concerts, and the Clarendon Hills Farmers Market - all just a short stroll away. With the BNSF Metra line only a five-minute walk from the home, commuting to downtown Chicago's Union Station is both quick and hassle-free. Outdoor recreation is right outside your door, from the neighborhood sledding hill just blocks away to Veterans Memorial Park with its playgrounds, sports fields, courts, and year-round Westmont Park District programs and events. School bus pickup is conveniently located right across the street, and easy access to Route 83, I-294, I-55, and I-88 makes commuting in every direction a breeze. Gorgeous home, award-winning schools, and an exceptional lifestyle location!

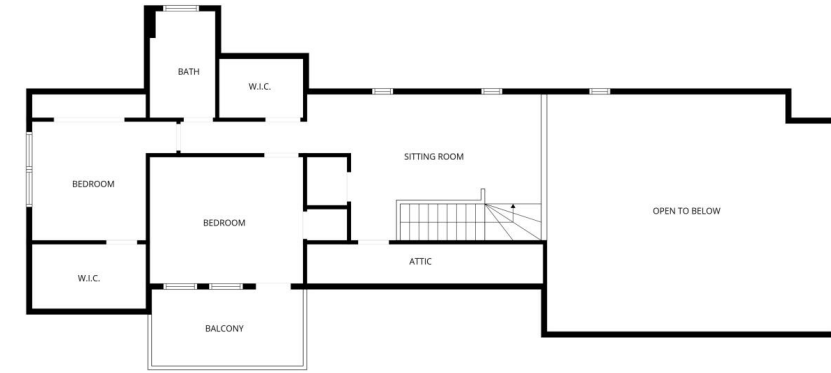








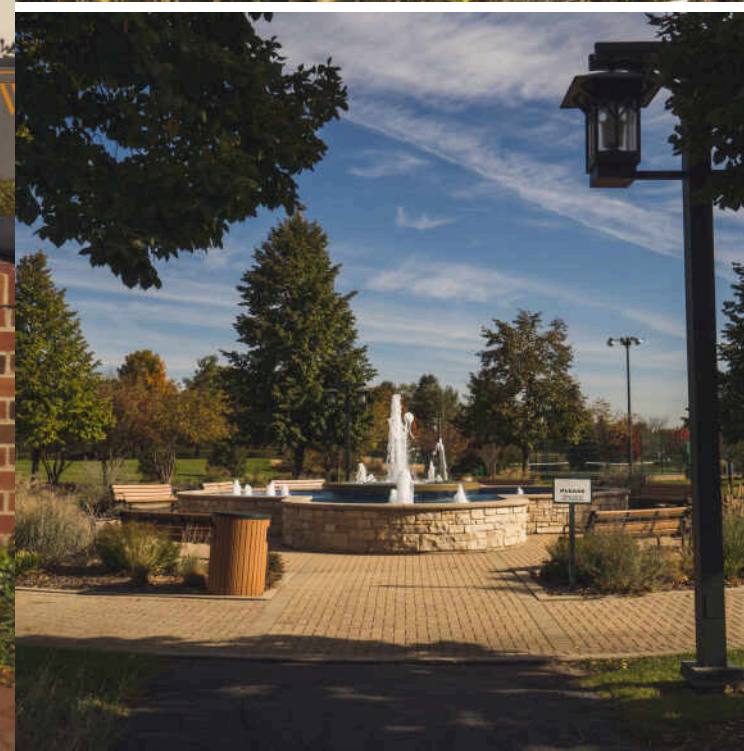
Main Level



Second Floor



Lower Level



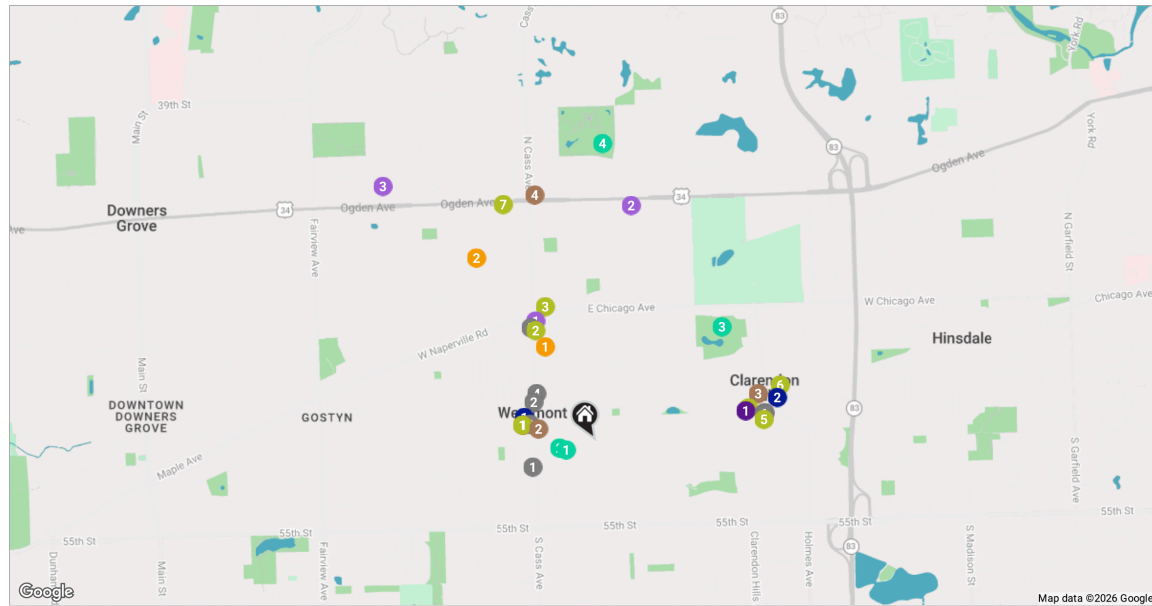
IN THE IMMORTAL WORDS OF BLUES LEGEND MUDDY WATERS, YOU MIGHT SAY **WESTMONT** HAS GOT ITS "MOJO WORKING."

The "father of modern Chicago blues" lived here for more than a decade until his death. A street near his former home is named "Honorary Muddy Waters Way."

The suburb has grown significantly thanks to its proximity to all that Chicago has to offer. Residents enjoy a suburban lifestyle and easy commute downtown. Convenient Metra service is available at the Westmont Station on the BNSF Railway.

Westmont has nearly 18 parks with numerous Westmont Park District facilities including space for bocce ball, tennis and basketball courts, and soccer and baseball fields. Additional park features include paths, playgrounds, and picnic areas.

The DuPage County village also boasts a number of highly-regarded restaurants as well as retailers and fine arts.



RESTAURANTS

- 1 Uncle Bub's BBQ & Catering
132 SOUTH CASS AVENUE, 0.3 MI
- 2 J. Flemings Absolutely Delicious
18 NORTH CASS AVENUE, 0.3 MI
- 3 Whiskey Hill Brewery & Kitchen- Westmont
5 W QUINCY ST, 0.3 MI
- 4 Golden Basket Breakfast Club
31 N CASS AVE, 0.3 MI
- 5 Neat Kitchen + Bar
246 NORTH CASS AVENUE, 0.6 MI
- 6 Brama La Pizza
34 SOUTH PROSPECT AVENUE #1336, 0.8 MI
- 7 IL Mio Italian Restaurant
30 S PROSPECT AVE, 0.8 MI

COFFEE

- 1 Brewed Awakening
19 WEST QUINCY STREET, 0.3 MI
- 2 Bacuri Bakery & Café
15 SOUTH CASS AVENUE, 0.3 MI
- 3 Tierra Distilling Co. & Cafe
211 BURLINGTON AVENUE, 0.8 MI
- 4 Starbucks Coffee Company
4 EAST OGDEN AVENUE, 1.2 MI

GROCERY

- 1 Nature's Best Market
257 N CASS AVE, 0.6 MI
- 2 Standard Market
333 EAST OGDEN AVENUE, 1.1 MI
- 3 Trader Joe's
122 OGDEN AVE, 1.5 MI

GYM

- 1 Dana Santi Pilates Studio
23 WEST QUINCY STREET, 0.3 MI

COFFEE

- 2 Good Juju Yoga
245 NORTH CASS AVENUE, 0.6 MI
- 3 Iron Flag Fitness
20 EAST CHICAGO AVENUE, 0.7 MI
- 4 MBS Pilates
4 WALKER AVENUE, 0.7 MI
- 5 Just Lift Fitness
200 PARK AVENUE, 0.8 MI
- 6 barre3
158 BURLINGTON AVENUE, 0.9 MI
- 7 Orangetheory Fitness
19 WEST OGDEN AVENUE, 1.2 MI

SCHOOLS

- 1 J T Manning Elementary School
200 NORTH LINDEN AVENUE, 0.5 MI
- 2 C E Miller Elementary School
125 WEST TRAUBE AVENUE, 1.0 MI

TRANSIT

- 1 Westmont
METRA - BNSF RAILWAY, 0.3 MI
- 2 Clarendon Hills
METRA - BNSF RAILWAY, 0.9 MI

PARKS

- 1 Westmont Park District
75 EAST RICHMOND STREET, 0.1 MI
- 2 Veterans Memorial Park
55 EAST RICHMOND STREET, 0.2 MI
- 3 Prospect Park
315 WEST CHICAGO AVENUE, 0.8 MI
- 4 Ty Warner Park
700 BLACKHAWK DRIVE, 1.4 MI

SERVICES

- 1 United States Postal Service
312 PARK AVENUE, 0.7 MI

NOTES



CINDY MCKAY

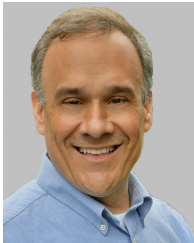
630.418.0118

CMCKAY@ATPROPERTIES.COM

WWW.BRISKEYMCKAY.COM



Briskey McKay
G R O U P



BOB BRISKEY

708.829.4490

BBRISKEY@ATPROPERTIES.COM

WWW.BRISKEYMCKAY.COM



Briskey McKay
G R O U P

@properties®

CHRISTIE'S
INTERNATIONAL REAL ESTATE