

3629 KEENAN LANE
GLENVIEW





ROOM DIMENSIONS

LIVING ROOM : 19' x 15'

DINING ROOM : 16' x 12'

FAMILY ROOM : 19' x 17'

PRIMARY BEDROOM : 18' x 17'

SECOND BEDROOM : 16' x 11'

OFFICE : 15' x 12'

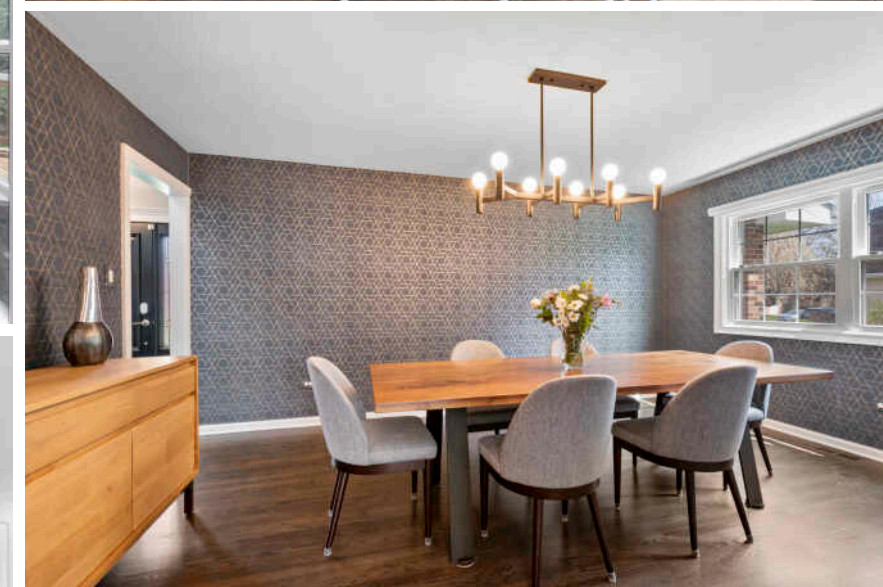
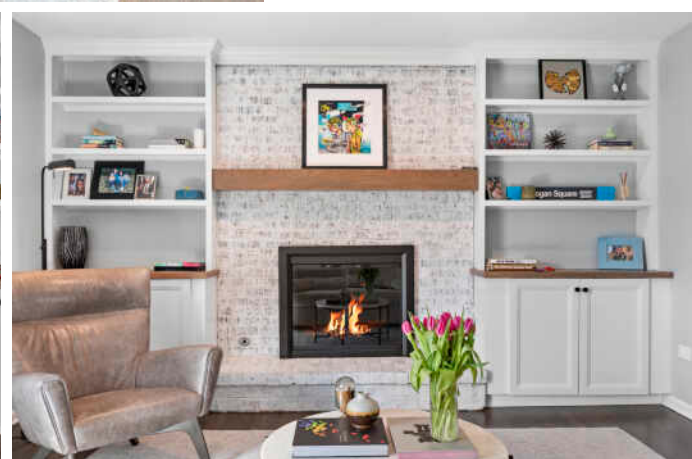
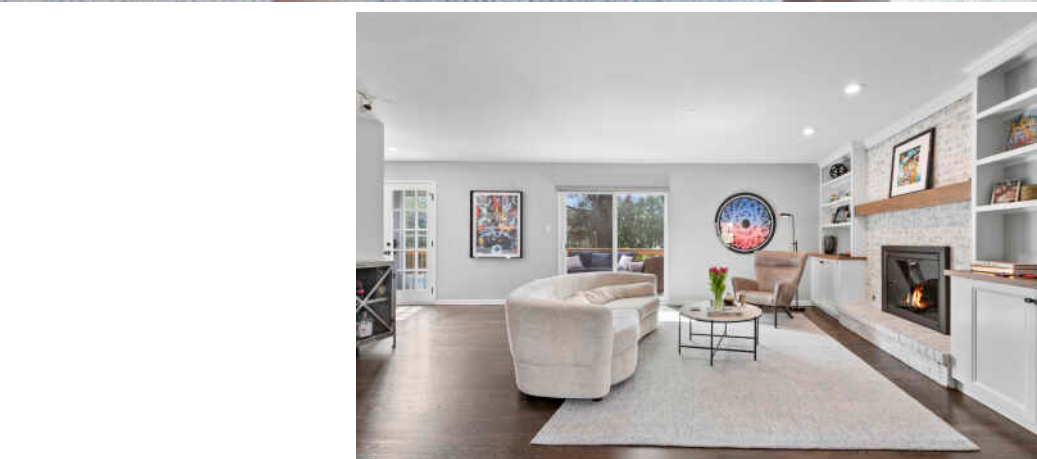
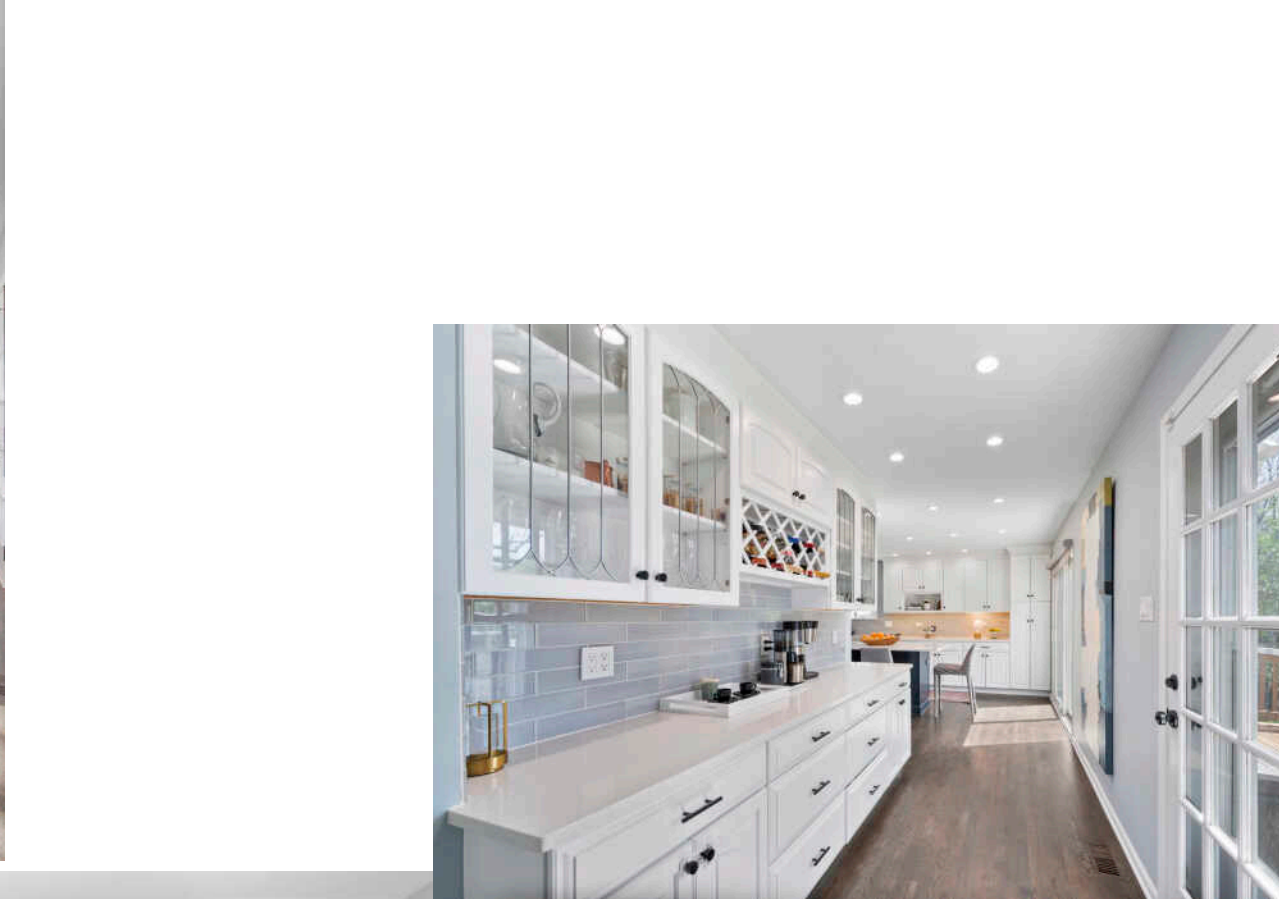
RECREATION ROOM : 27' x 26'

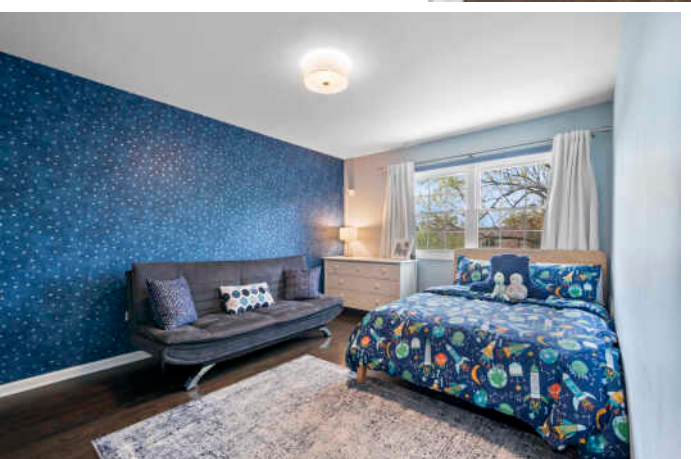
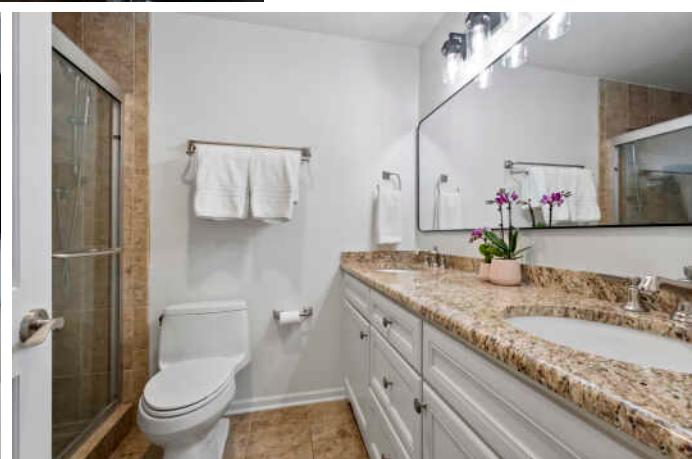
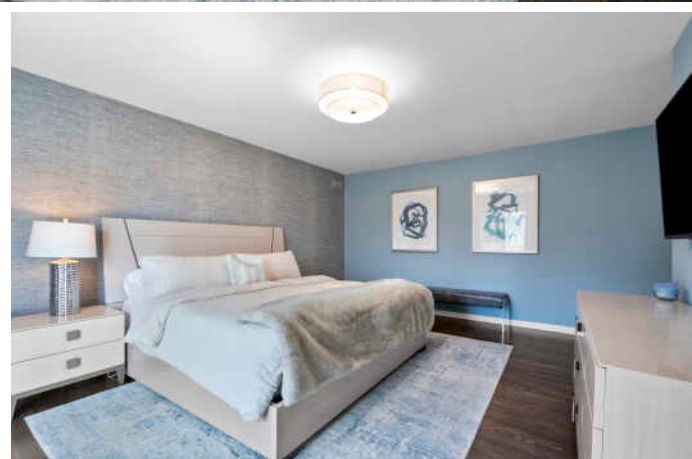
Light, bright, versatile and updated - this spacious colonial in The Willows has been extensively improved by the current owners. A fabulous two story foyer with new skylight (with custom motorized cover) welcomes guests and leads to the circular floor plan - great for both entertaining as well as family living. The living room and family room are flexible spaces and are anchored by a wood burning fireplace with custom built-ins. An entertaining sized dining room is adjacent to the renovated kitchen with center island, new appliances, butlers pantry and two entrances to the new deck & landscaped yard. Upstairs you will find four large bedrooms including a primary suite with a walk-in, organized closet, bathroom with double sinks and a stone shower with multiple jets. The lower level offers a large recreation room, 5th bedroom and updated full bath. Recent improvements include: new roof, windows, Hardie board siding, gutters, gutter guards, soffits, hardscape and front step, kitchen and basement bath renovations, tankless water heater, sump pump with backup, hardwood floors refinished, interior painting, custom window treatments, light fixtures and much more. See agent for full list of improvements. Desirable Willowbrook, Maple and Glenbrook South school district. Just a few minutes to the Glen or downtown Glenview and easy access to O'Hare. Move right in and call it home!

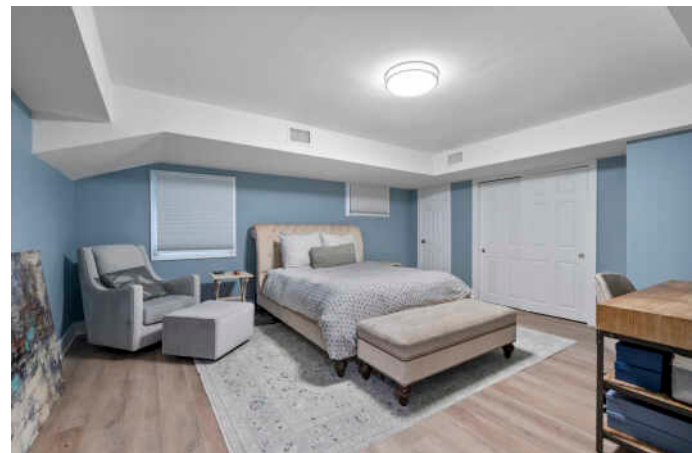


5 BEDROOM

3.1 BATH



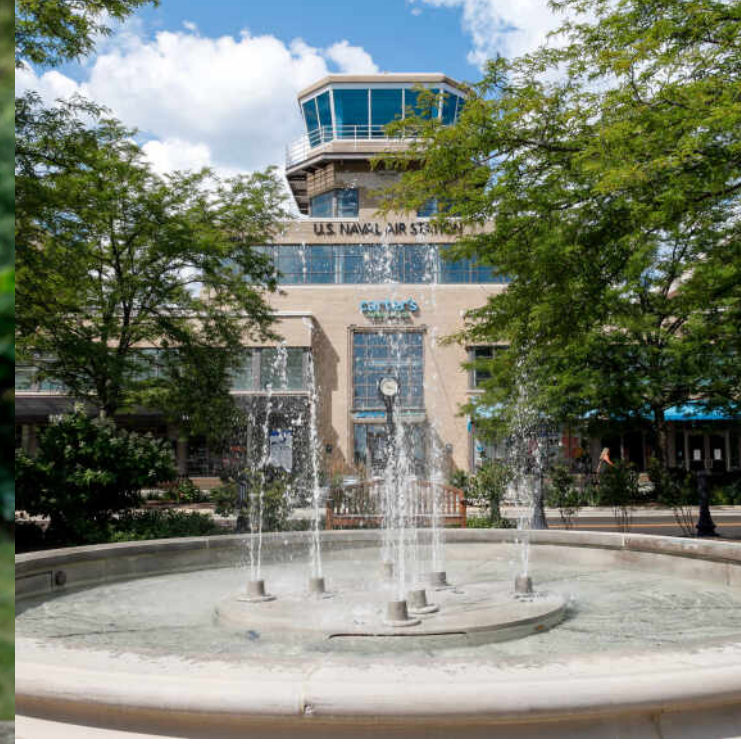






TOTAL: 3558 sq. ft
 Basement: 1045 sq. ft, 1st floor: 1351 sq. ft, 2nd floor: 1162 sq. ft
 EXCLUDED AREAS: UTILITY: 236 sq. ft, GARAGE: 409 sq. ft, DECK: 344 sq. ft,
 FIREPLACE: 11 sq. ft, BALCONY: 40 sq. ft, OPEN TO BELOW: 75 sq. ft,
 WALLS: 253 sq. ft

Floor Plan Created By Cubicasa App. Measurements Deemed Highly Reliable But Not Guaranteed.



JUST 20 MILES FROM DOWNTOWN CHICAGO, **GLENVIEW** IS A DESTINATION IN ITS OWN RIGHT.

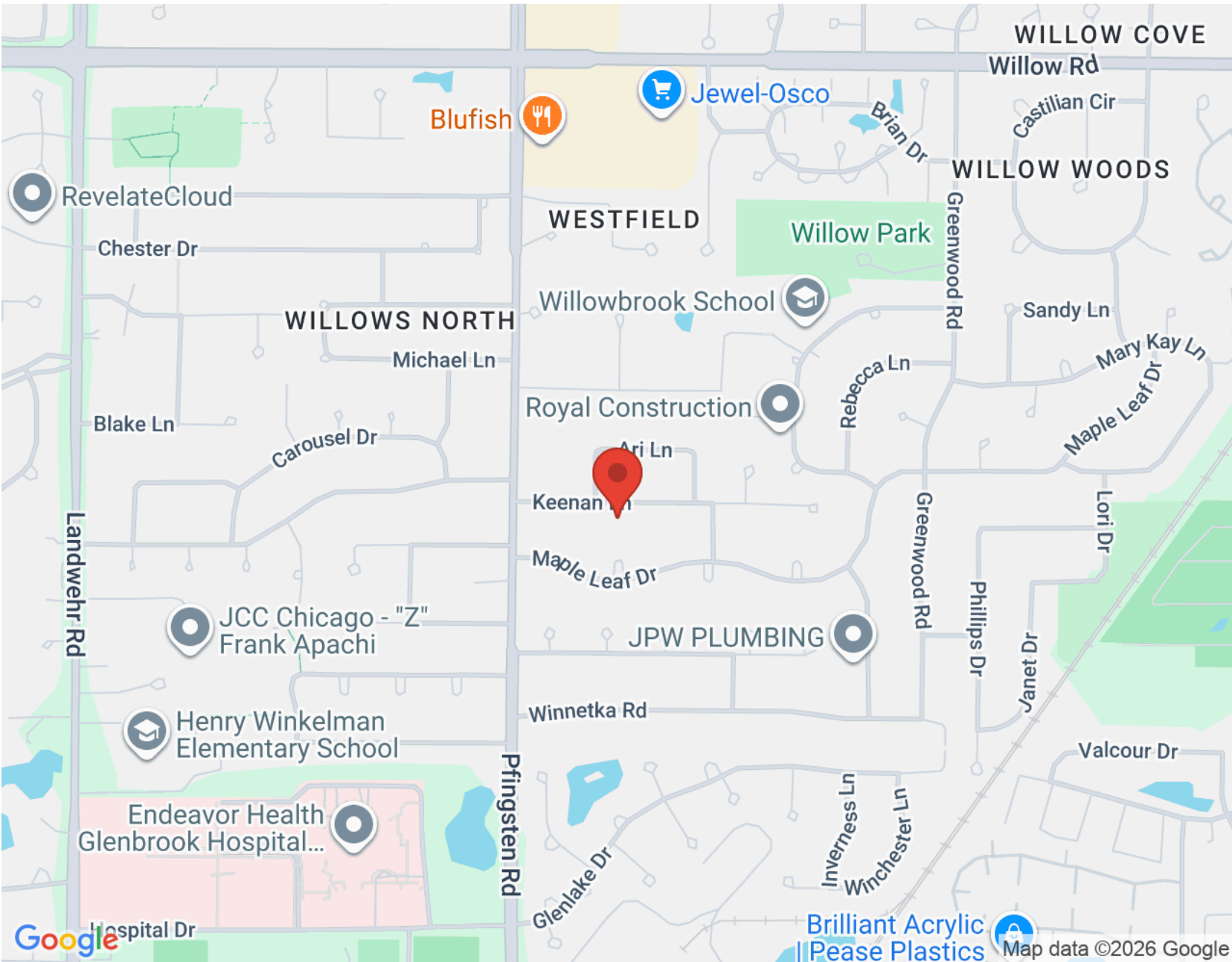
The scenic North Shore town has expanded rapidly thanks to its established neighborhoods, convenient access to transportation, and array of amenities.

More than 45,000 people call Glenview home, with properties ranging from townhomes and condominiums to luxury custom homes featuring the latest amenities. Newer homes can also be found at The Glen, a large development on the site of the former Glenview Naval Air Station that offers an assortment of shops and restaurants, a movie complex, the Kohl Children's Museum, and access to one of the town's two Metra stations.

Glenview is served by a number of public and private schools, including Glenbrook South High School, ranked among the top in the nation according to Business Insider.

The Glenview Park District offers indoor and outdoor pools, golf courses, soccer fields, nature trails, an ice center, tennis club, and multi-purpose community center.

In addition to modern development, Glenview celebrates and preserves its early days with two notable attractions: Wagner Farm and The Grove. A 20-acre working farm, Wagner Farm has hands-on programs - horseback riding, tractor driving, and other activities - that reflect a day in the life of a 1920s farmer. The Grove, a National Historic Landmark, includes a prairie, nature trails, historic buildings, and a log cabin that dates back to the 1850s.



NOTES _____



MEREDITH SCHREIBER

1 8478286622

8477630200

MEREDITH@ATPROPERTIES.COM

WWW.NORTHSHORECHICAGO.COM